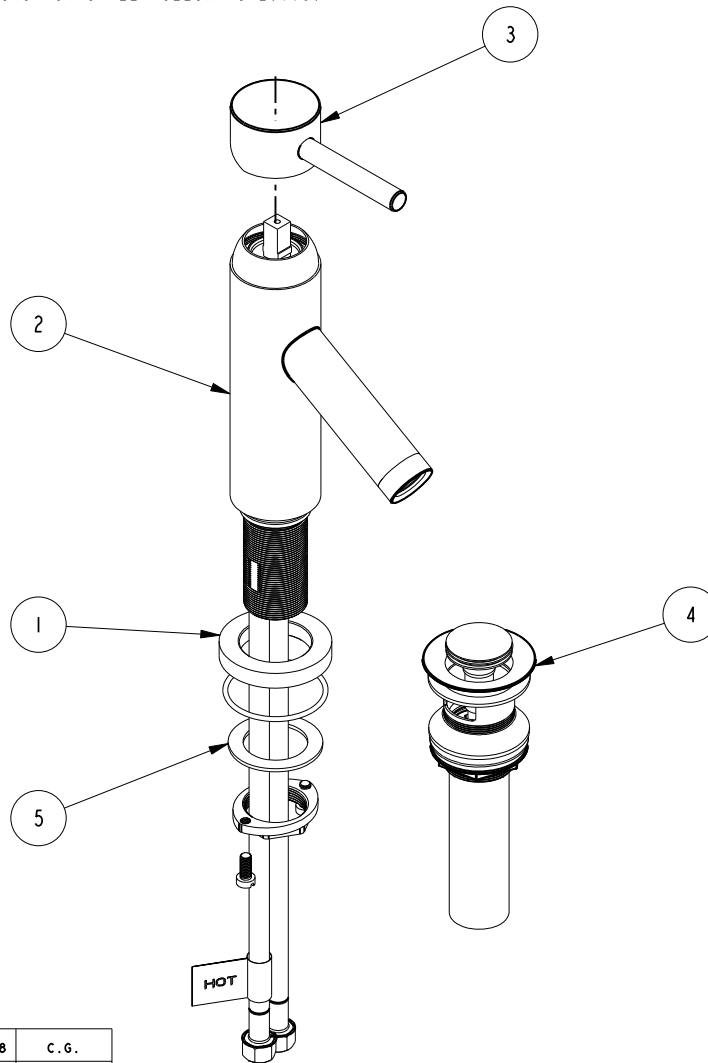


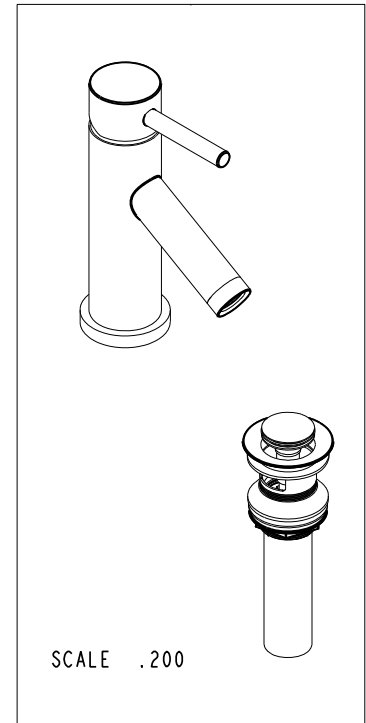
NOTES:

(NI) 1. FIT / FORM / FUNCTION SHALL FOLLOW PS-E.008.



BILL OF MATERIAL (CURRENT LEVEL)

ITEM	PT/ASSY	DESCRIPTION	TYPE	QTY.
1	20-351	BASE RING ASM	ASSEMBLY	1
2	3-256	SPOUT ASM - ASM 1503	ASSEMBLY	1
3	2-334	HANDLE ASM	ASSEMBLY	1
4	330	DRAIN, PUSH DOWN, W/ OVERFLOW	ASSEMBLY	1
5	1-256	MOUNTING KIT	ASSEMBLY	1



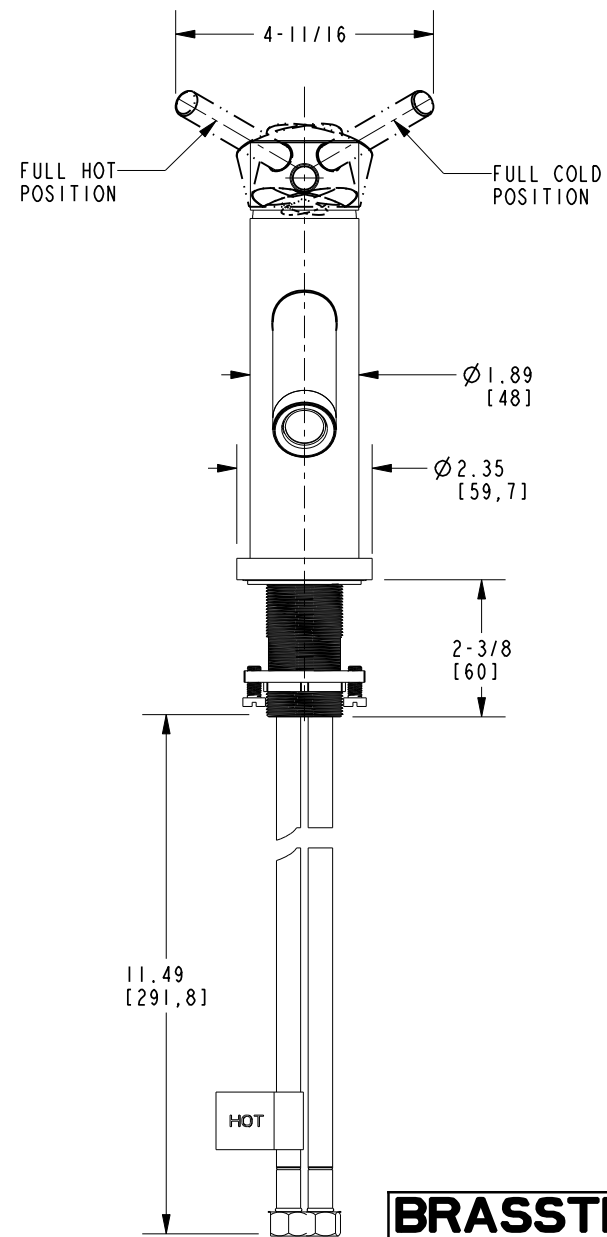
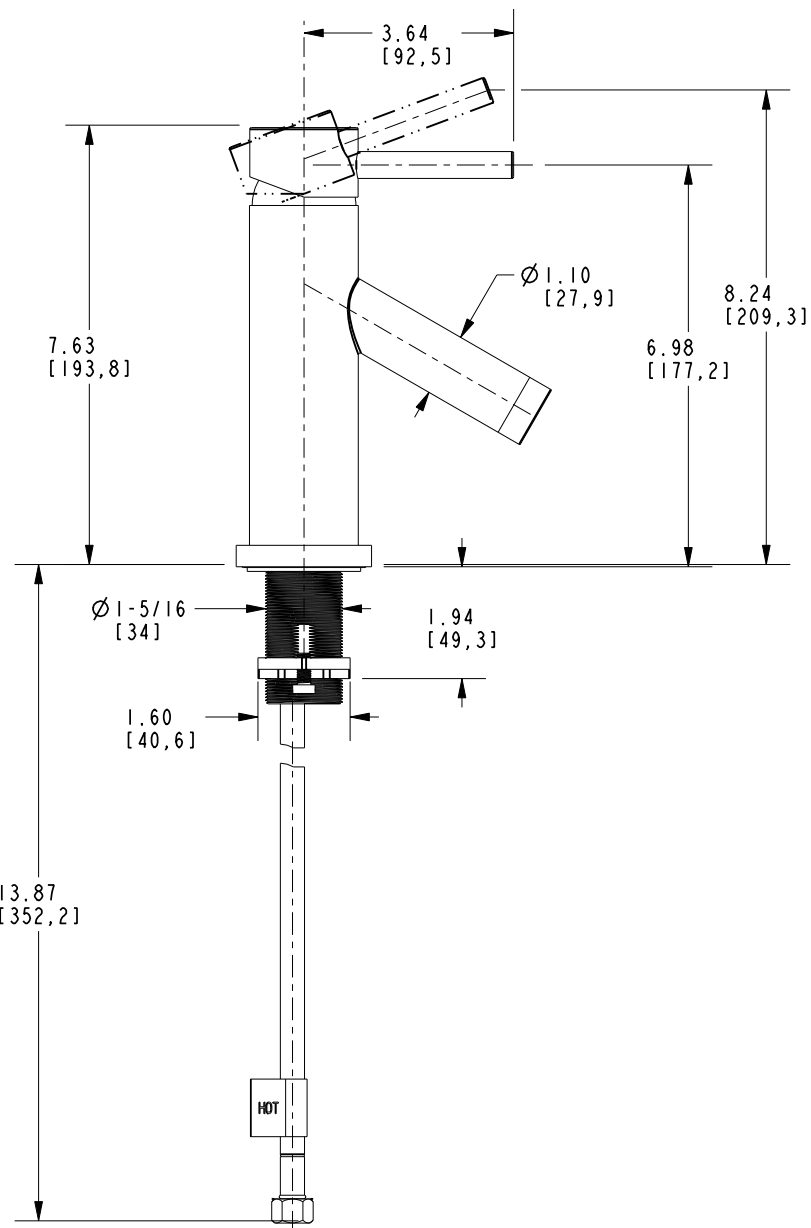
-	G	EN-3718b	10/25/18	C.G.
-	F	EN-3584	4/12/18	J.A.
-	E	EN-2643	01/15/16	J.M
-	D	EN-2119	07/23/12	-
-	C	EN-1596	08/05/10	-
-	B	EO-0278	11/06/03	-
-	A	EO-0154	02/05/03	-
-	-	RELEASED	09/17/02	-
ZONE	REV	DESCRIPTION	DATE	APPROVED

COPYRIGHT 2005 BRASSTECH, INC. THESE DRAWINGS AND THE DESIGNS DEPICTED HEREIN ARE THE PROPRIETARY PROPERTY OF BRASSTECH. ANY USE OR REPRODUCTION IS SUBJECT TO THE EXPRESS APPROVAL OF BRASSTECH. UNAUTHORIZED USE IS STRICTLY PROHIBITED. ALL RIGHTS RESERVED.

TESTING	-	-	-
ASSEMBLY	-	-	-
PLATING	-	-	-
POLISHING	-	NEXT ASSY	USED ON
MACHINING	-	APPLICATION	
TOOLING FIXTURE #	REMOVE ALL BURRS AND SHARP EDGES		

UNITS ARE: INCHES [MM]	
TOLERANCES ARE:	
FRACTIONS DECIMALS	ANGLES
±1/16"	±1°
.X ±.1 (2,5)	
.XX ±.06 (1,5)	
(X.XXX) DENOTES CRITICAL DIMS.	
ALL THREADS ARE CRITICAL	
DRAWN	J. AMOZOC 4/12/18
CHECKED	J. MANGO 12/22/15
APPROVED	J.M 01/15/16

<b>BRASSTECH</b>		2001 CARNEGIE AVE. SANTA ANA, CA 92705 (949) 417-5207	
INCORPORATED			
SGL HDL LAV FAUCET			
DWG NO.		REV	
1503		G	
SCALE	REF.	SHEET	OF
.250	-	1	2



<b>BRASSTECH</b>		2001 E. CARNEGIE AVE. SANTA ANA, CA 92705 (949) 417-5207	
DWG NO.	1503	REV	G
SCALE	.300	REF.	-
		SHEET	2 OF 2