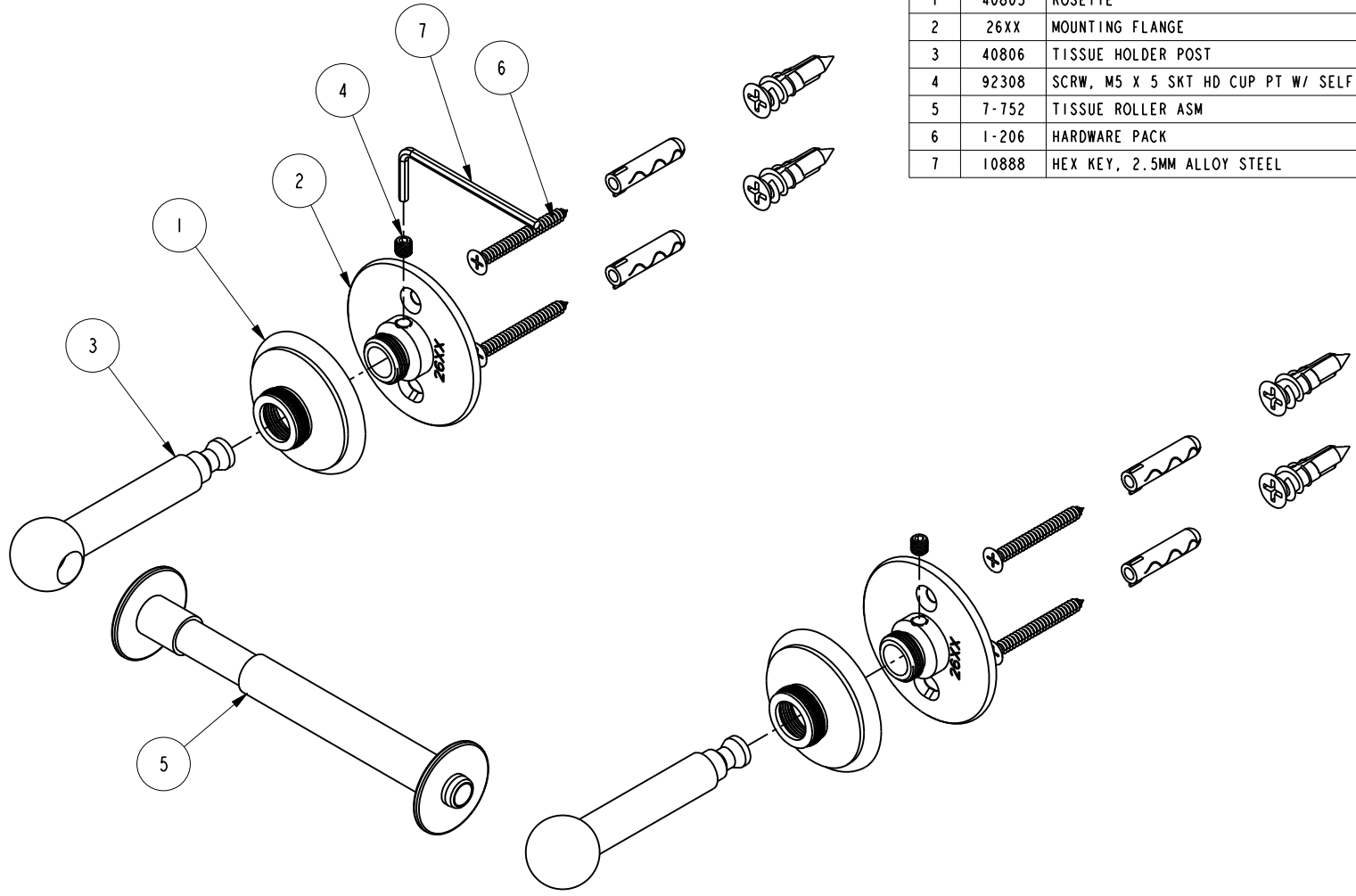


NOTES:

1. FIT / FORM / FUNCTION SHALL FOLLOW PS-E.008.



BILL OF MATERIAL (CURRENT LEVEL)

ITEM	PT/ASSY	DESCRIPTION	TYPE	QTY.
1	40805	ROSETTE	PART	2
2	26XX	MOUNTING FLANGE	PART	2
3	40806	TISSUE HOLDER POST	PART	2
4	92308	SCRW, M5 X 5 SKT HD CUP PT W/ SELF LOC SS	PART	2
5	7-752	TISSUE ROLLER ASM	ASSEMBLY	1
6	1-206	HARDWARE PACK	ASSEMBLY	2
7	10888	HEX KEY, 2.5MM ALLOY STEEL	PART	1

TESTING	-	-	-
ASSEMBLY	-	-	-
PLATING	-	-	-
POLISHING	-	NEXT ASSY	USED ON
MACHINING	-	APPLICATION	
TOOLING FIXTURE #	REMOVE ALL BURRS AND SHARP EDGES		

BRASSTECH 2001 CARNEGIE AVE.
INCORPORATED SANTA ANA, CA 92705
(949) 417-5207

DOUBLE POST TT HOLDER

DWG NO. **1600-1500** REV **A**

SCALE .500 REF. - SHEET 1 OF 2

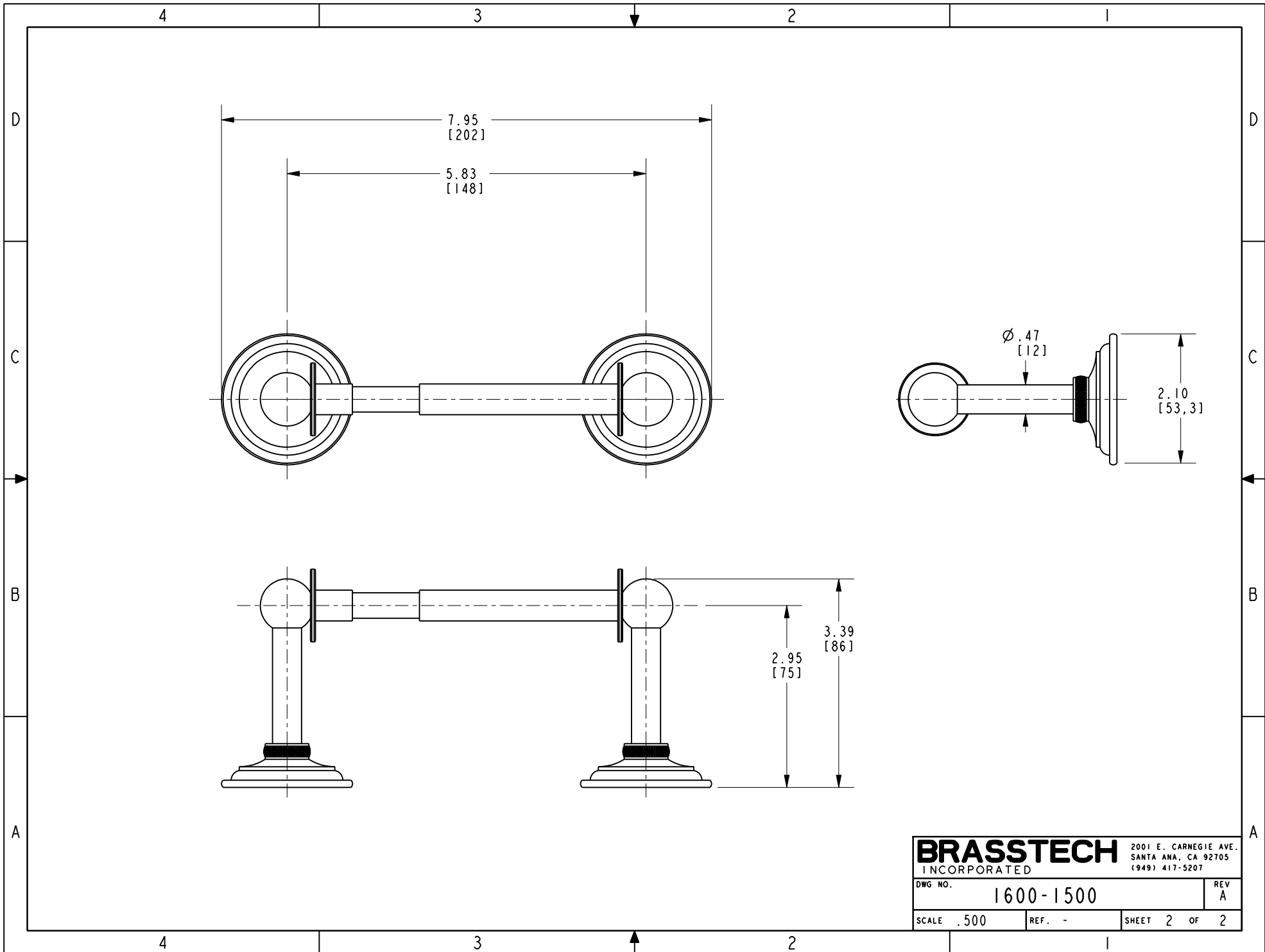
ZONE	REV	DESCRIPTION	DATE	APPROVED
-	A	EN-4022	11/12/19	J.M.
-	-	EN-3914	08/09/19	J.M.

COPYRIGHT 2005 BRASSTECH, INC.
THESE DRAWINGS AND THE DESIGNS
DEPICTED HEREIN ARE THE PROPRIETARY
PROPERTY OF BRASSTECH. ANY USE
OR REPRODUCTION IS SUBJECT TO
THE EXPRESS APPROVAL OF BRASSTECH.
UNAUTHORIZED USE IS STRICTLY
PROHIBITED. ALL RIGHTS RESERVED.

D
C
B
A

D
C
B
A

4 3 2 1



BRASSTECH		2001 E. CARNEGIE AVE. SANTA ANA, CA 92705 (949) 417-5207	
DWG NO.	1600-1500	REV A	
SCALE .500	REF. -	SHEET 2 OF 2	