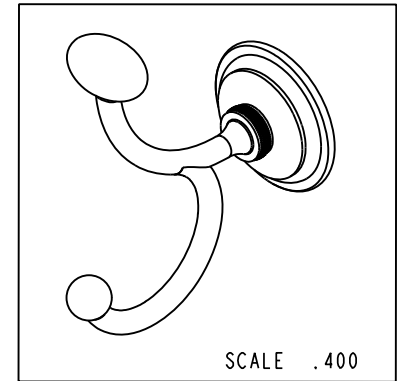
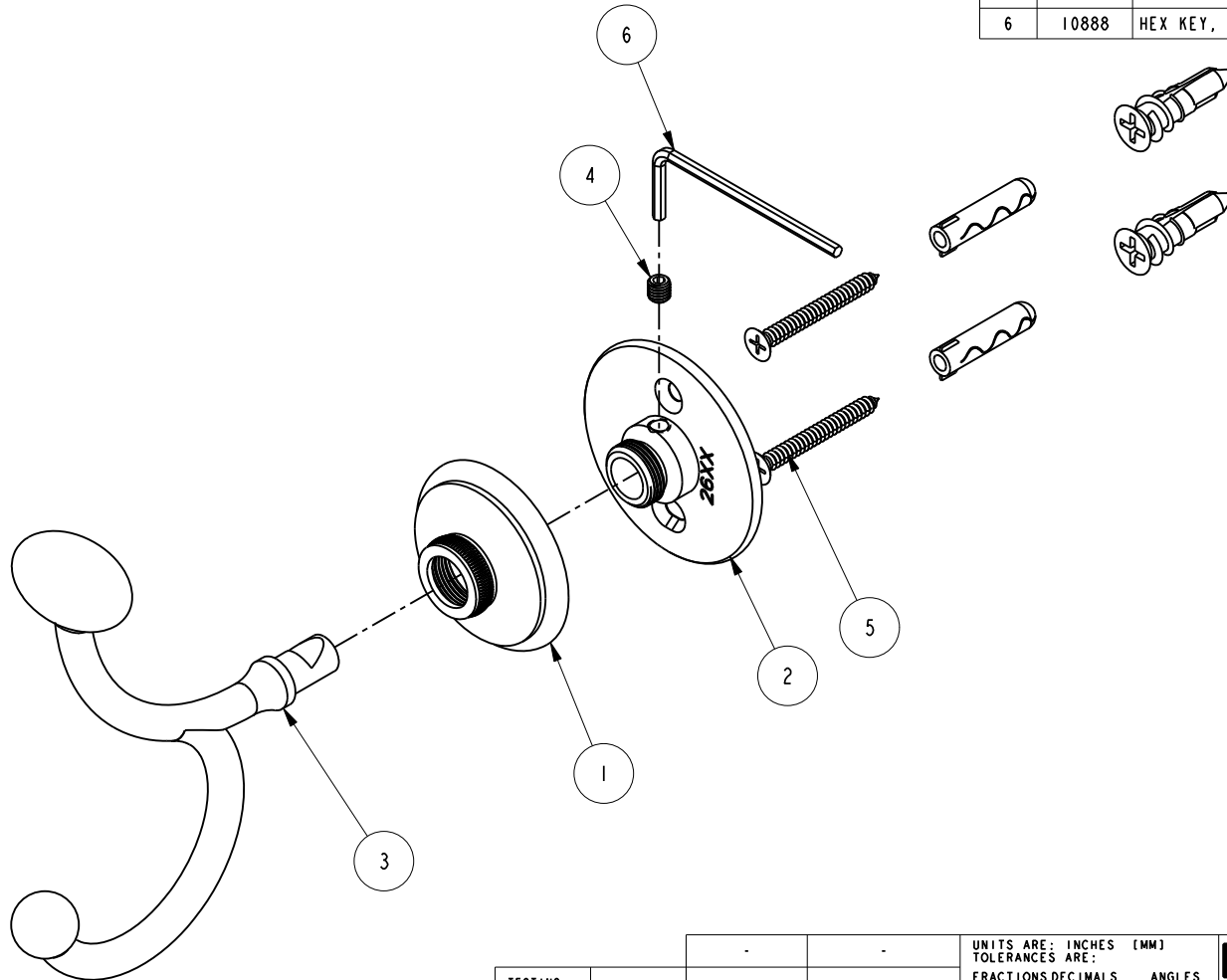


NOTES:

1. FIT / FORM / FUNCTION SHALL FOLLOW PS-E.008.

BILL OF MATERIAL (CURRENT LEVEL)

ITEM	PT/ASSY	DESCRIPTION	TYPE	QTY.
1	40805	ROSETTE	PART	1
2	26XX	MOUNTING FLANGE	PART	1
3	40804	HOOK POST	PART	1
4	92308	SCRW, M5 X 5 SKT HD CUP PT W/ SELF LOC SS	PART	1
5	1-206	HARDWARE PACK	ASSEMBLY	1
6	10888	HEX KEY, 2.5MM ALLOY STEEL	PART	1

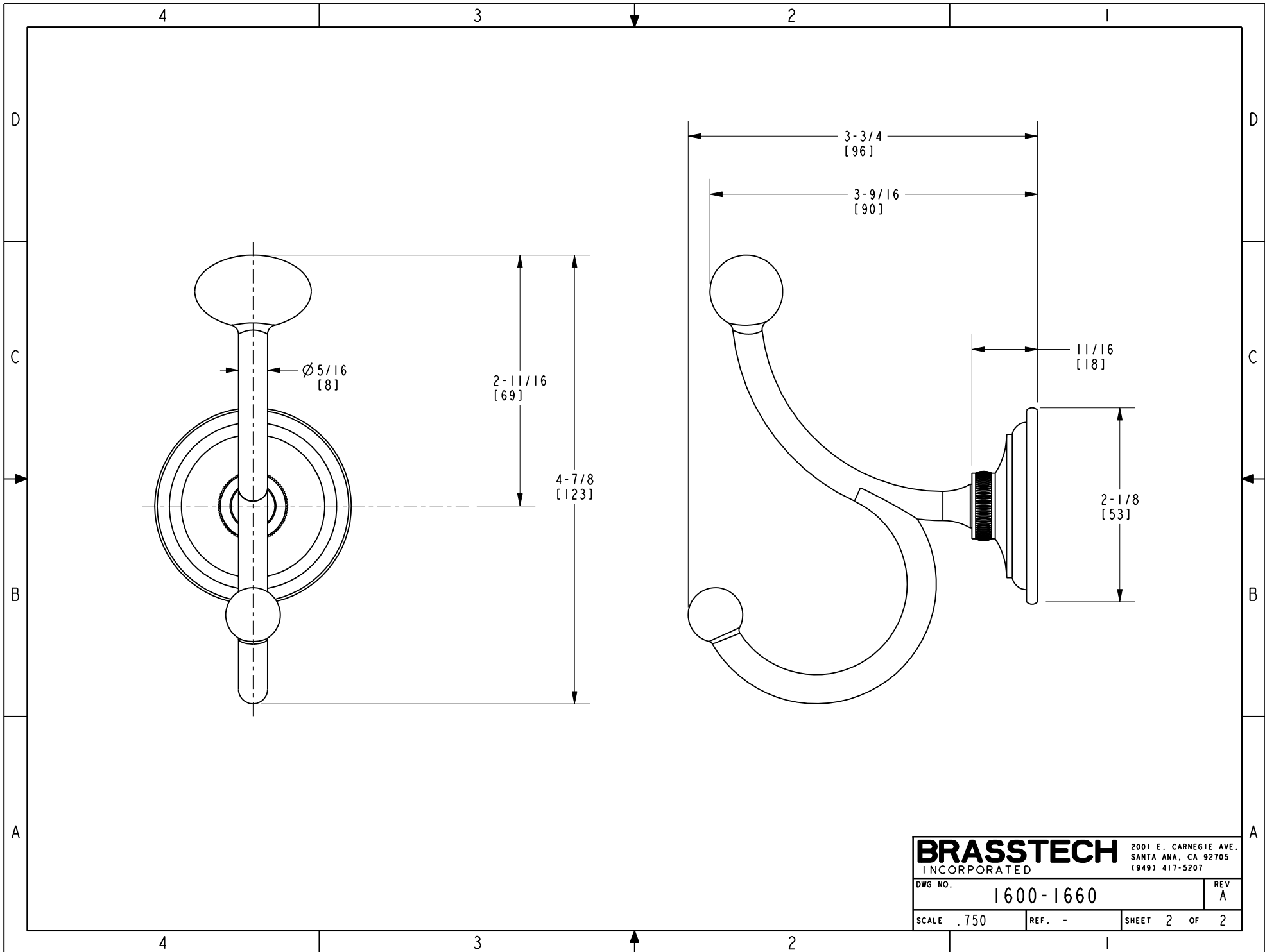


TESTING	-	-	-
ASSEMBLY	-	-	-
PLATING	-	-	-
POLISHING	-	NEXT ASSY	USED ON
MACHINING	-	APPLICATION	
TOOLING FIXTURE #	REMOVE ALL BURRS AND SHARP EDGES		

BRASSTECH		2001 CARNEGIE AVE. SANTA ANA, CA 92705 (949) 417-5207	
INCORPORATED			
BOUBLE ROBE HOOK			
DWG NO.		REV	
1600-1660		A	
SCALE	REF.	SHEET	OF
.600	-	1	2

COPYRIGHT 2005 BRASSTECH, INC.
THESE DRAWINGS AND THE DESIGNS
DEPICTED HEREIN ARE THE PROPRIETARY
PROPERTY OF BRASSTECH. ANY USE
OR REPRODUCTION IS SUBJECT TO
THE EXPRESS APPROVAL OF BRASSTECH.
UNAUTHORIZED USE IS STRICTLY
PROHIBITED. ALL RIGHTS RESERVED.

ZONE	REV	DESCRIPTION	DATE	APPROVED
-	A	EN-4022	11/12/19	J.M.
-	-	EN-3914	08/08/19	J.M.



BRASSTECH		2001 E. CARNEGIE AVE.	
INCORPORATED		SANTA ANA, CA 92705	
DWG NO. 1600-1660		REV A	
SCALE .750	REF. -	SHEET 2 OF 2	

2001 E. CARNEGIE AVE.
 SANTA ANA, CA 92705
 (949) 417-5207

DWG NO. 1600-1660 REV A

SCALE .750 REF. - SHEET 2 OF 2