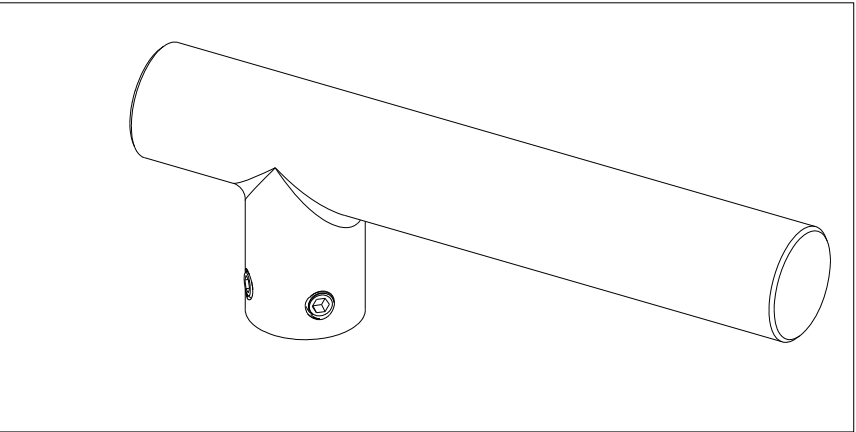
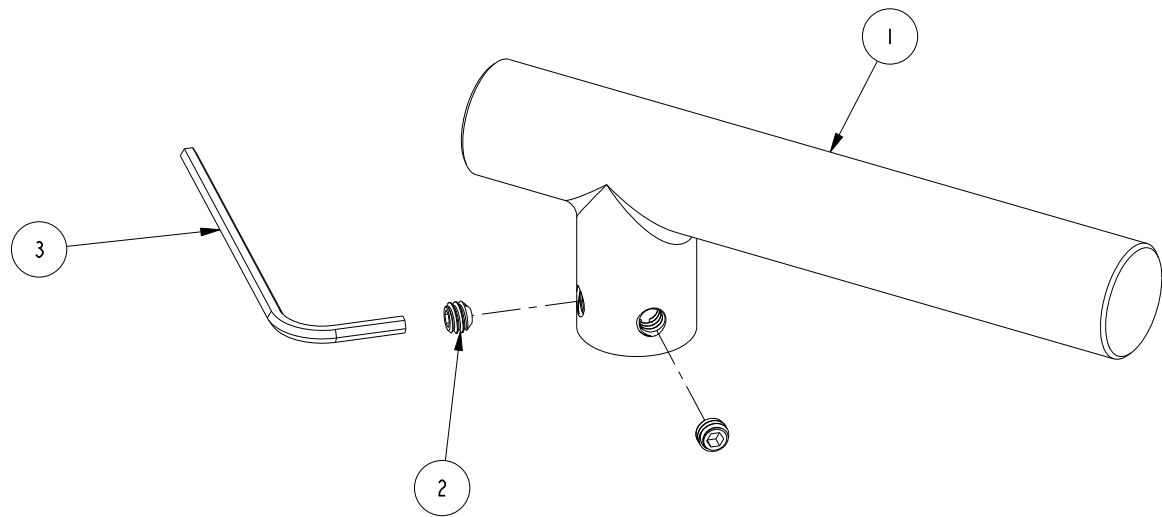


1. TO INSPECT ASSEMBLY, FOLLOW FIRST ARTICLE AND IN PROCESS INSPECTION SHEET.

BILL OF MATERIAL (CURRENT LEVEL)				
ITEM	PT/ASSY	DESCRIPTION	TYPE	QTY.
1	12744	ROUND LEVER, HOT	PART	1
2	92000	SCREW 8 - 32 X 1/8 SS	PART	2
3	10192	HEX KEY TOOL, #8 5/64	PART	1



C	EN-4585-1	03/02/23	R.S.
B	EN-3277b	04/18/18	JM
A	EN-2032	01/07/14	-
REV	DESCRIPTION	DATE	APPROVED

COPYRIGHT 2005 BRASSTECH, INC.
THESE DRAWINGS AND THE DESIGNS
DEPICTED HEREIN ARE THE PROPRIETARY
PROPERTY OF BRASSTECH. ANY USE
OR REPRODUCTION IS SUBJECT TO
THE EXPRESS APPROVAL OF BRASSTECH.
UNAUTHORIZED USE IS STRICTLY
PROHIBITED. ALL RIGHTS RESERVED.

-	-	UNITS ARE: INCHES (MM)		BRASSTECH INCORPORATED 2001 CARNEGIE AVE. SANTA ANA, CA 92705 (949) 417-5207	
-	-	TOLERANCES ARE:			
-	-	FRACTIONS DECIMALS	ANGLES		
-	-	±1/16"	±1°		
3-227LH	990L	.X ±.1 (2.5) .XX ±.06 (1.5)		HANDLE LEVER ASM, HOT	
NEXT ASSY	USED ON	X.XXX DENOTES CRITICAL DIMS. ALL THREADS ARE CRITICAL			
APPLICATION		DRAWN	K.N.	03/02/23	DWG NO. 2-111H
REMOVE ALL BURRS AND SHARP EDGES		CHECKED	R.S.	03/02/23	
		APPROVED	J.M.	03/02/23	SCALE 1.000
					REF. -
					SHEET OF