

4

3

2

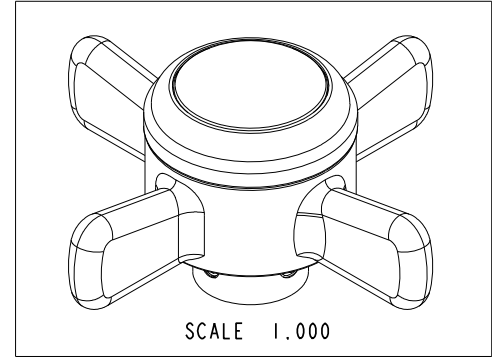
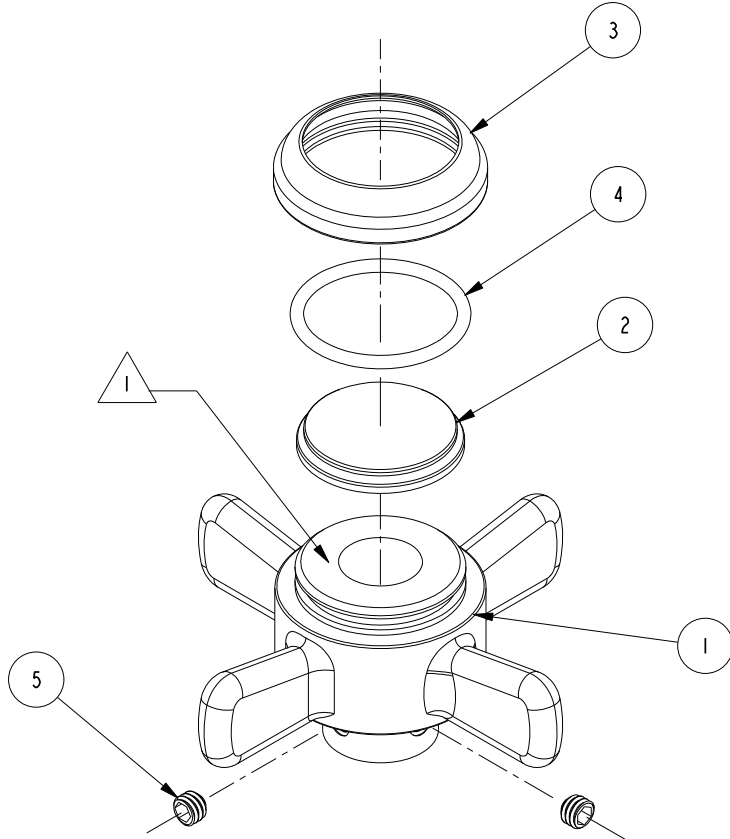
1

NOTES:

1. APPLY A THICK LAYER (APPROX. .02" THICK) OF SILICONE GREASE ON THIS SURFACE TO PREVENT ITEM 2 (P/N 10937) FROM FREELY ROTATES.

BILL OF MATERIAL (CURRENT LEVEL)

ITEM	PT/ASSY	DESCRIPTION	TYPE	QTY.
1	10637	THIN BLADE CROSS HANDLE	PART	1
2	10937	PORC BUTTON - BLANK	PART	1
3	10814	PORCELAIN BEZEL	PART	1
4	91023	O-RING #2-019	PART	1
5	92000	SCREW 8 - 32 X 1/8 SS	PART	2



COPYRIGHT 2005 BRASSTECH, INC. THESE DRAWINGS AND THE DESIGNS DEPICTED HEREIN ARE THE PROPRIETARY PROPERTY OF BRASSTECH. ANY USE OR REPRODUCTION IS SUBJECT TO THE EXPRESS APPROVAL OF BRASSTECH. UNAUTHORIZED USE IS STRICTLY PROHIBITED. ALL RIGHTS RESERVED.

BRASSTECH
INCORPORATED

2001 CARNEGIE AVE.
SANTA ANA, CA 92705
(949) 417-5207

THIN BLADE X-HANDLE - BLANK

ASSY. NO. 2-270

SCALE 1.000

REF. -

SHEET 1 OF 1

REV	REV DESC	DATE
A	EN-2222	07/16/12
-	RELEASED	08/01/03

4

3

2

1