

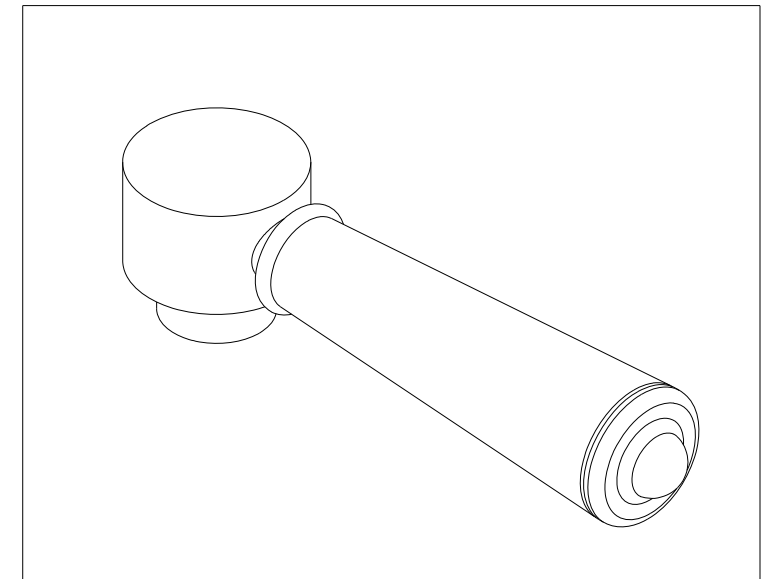
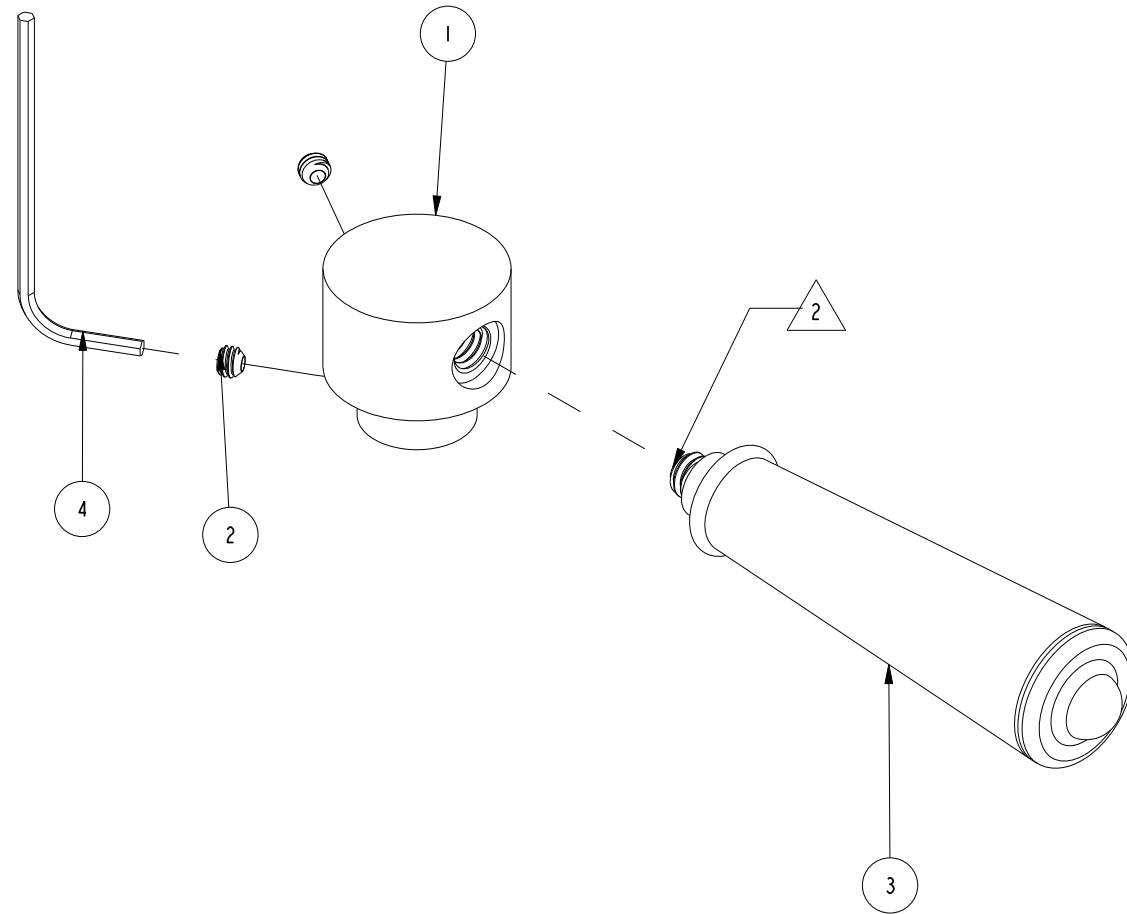
NOTES:

1. TO INSPECT ASSEMBLY, FOLLOW FIRST ARTICLE AND IN PROCESS INSPECTION SHEET.

2. APPLY LOCTITE 680 OR EQUIVALENT.

BILL OF MATERIAL (CURRENT LEVEL)

ITEM	PT/ASSY	DESCRIPTION	TYPE	QTY.
1	10956	HANDLE BASE	PART	1
2	92000	SCREW 8 - 32 X 1/8 SS	PART	2
3	11337	TAPERED LEVER HANDLE	PART	1
4	10192	HEX KEY TOOL, #8 5/64	PART	1



REV	DESCRIPTION	DATE	APPROVED
B	EN-4585-2	03/10/23	R.S.
A	EO-0741	07/07/06	-
-	RELEASE	09/17/01	-

COPYRIGHT 2005 BRASSTECH, INC.  
 THESE DRAWINGS AND THE DESIGNS  
 DEPICTED HEREIN ARE THE PROPRIETARY  
 PROPERTY OF BRASSTECH. ANY USE  
 OR REPRODUCTION IS SUBJECT TO  
 THE EXPRESS APPROVAL OF BRASSTECH.  
 UNAUTHORIZED USE IS STRICTLY  
 PROHIBITED. ALL RIGHTS RESERVED.

-	-	UNITS ARE: INCHES [MM]	
-	-	TOLERANCES ARE:	
-	-	FRACTIONS DECIMALS ANGLES	
		±1/16" .x ±.1 [2.5]	±1°
		.xx ±.06 [1.5]	
3-346	3-1200	X.XXX DENOTES CRITICAL DIMS.	
		ALL THREADS ARE CRITICAL	
NEXT ASSY	USED ON	DRAWN	K.N. 03/10/23
		CHECKED	R.S. 03/10/23
		APPROVED	J.W. 03/10/23
	REMOVE ALL BURRS AND SHARP EDGES		

**BRASSTECH** 2001 CARNEGIE AVE.  
 INCORPORATED SANTA ANA, CA 92705  
 (949) 417-5207

TAPERED LEVER HNDL ASM

DWG NO. 2-279

SCALE 1.000 REF. - SHEET 1 OF 2

