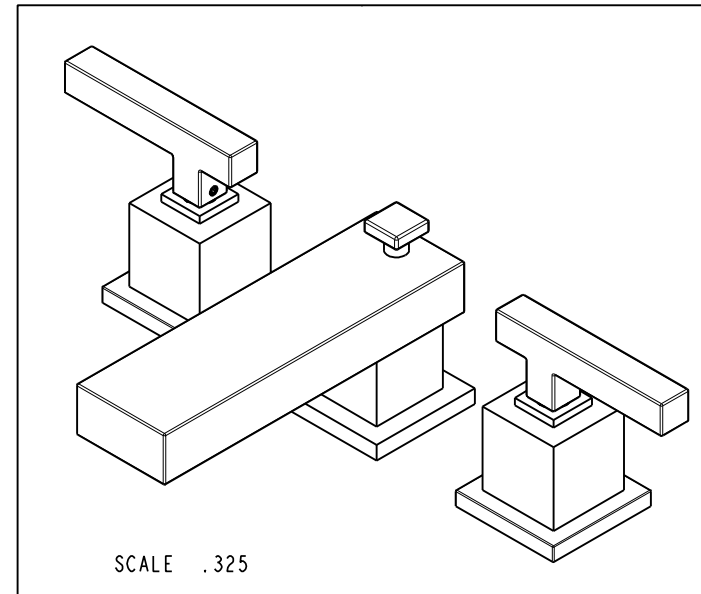
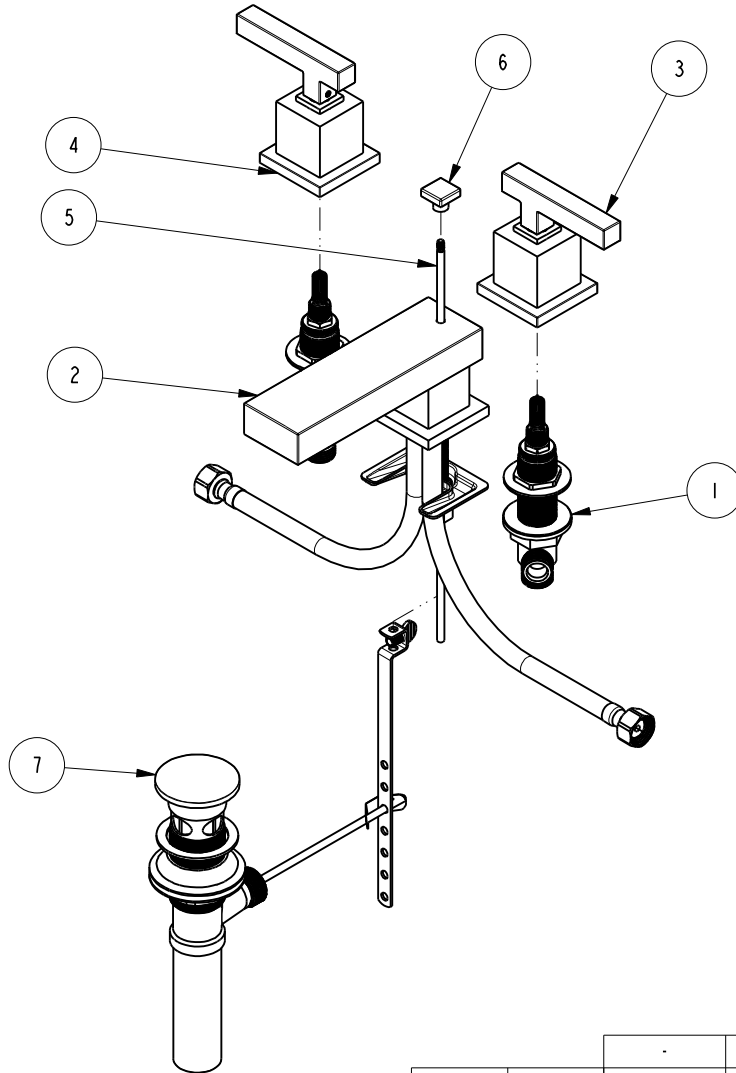


NOTES:

1. TO INSPECT ASSEMBLY, FOLLOW FIRST ARTICLE AND IN PROCESS INSPECTION SHEET.

**BILL OF MATERIAL (CURRENT LEVEL)**

ITEM	PT/ASSY	DESCRIPTION	TYPE	QTY.
1	1-525-2020	W/S VALVE ASM	ASSEMBLY	1
2	3-369	SQUARE W/S SPOUT	ASSEMBLY	1
3	3-220C	ASSY, HANDLE TRIM, COLD	ASSEMBLY	1
4	3-220H	ASSY, HANDLE TRIM, HOT	ASSEMBLY	1
5	10288	3/16" POP UP ROD	PART	1
6	10676	SQUARE POP UP KNOB	PART	1
7	325	POP UP ASSEMBLY	ASSEMBLY	1



ZONE	REV	DESCRIPTION	DATE	APPROVED
-	D	EN-4300m	11/02/20	R.S.
-	C	EN-1616	09/13/10	-
-	B	EN-1351	09/30/09	-
-	A	EO-0259	03/22/04	-

COPYRIGHT 2005 BRASSTECH, INC. THESE DRAWINGS AND THE DESIGNS DEPICTED HEREIN ARE THE PROPRIETARY PROPERTY OF BRASSTECH. ANY USE OR REPRODUCTION IS SUBJECT TO THE EXPRESS APPROVAL OF BRASSTECH. UNAUTHORIZED USE IS STRICTLY PROHIBITED. ALL RIGHTS RESERVED.

TESTING	-	-	-
ASSEMBLY	-	-	-
PLATING	-	-	***
POLISHING	-	NEXT ASSY	USED ON
MACHINING	-	APPLICATION	
TOOLING FIXTURE #	REMOVE ALL BURRS AND SHARP EDGES		

UNITS ARE: INCHES [MM]		
TOLERANCES ARE:		
FRACTIONS	DECIMALS	ANGLES
±1/16"	.X ±.1 [2.5]	±°
	.XX ±.06 [1.5]	
(X.XXX) DENOTES CRITICAL DIMS.		
ALL THREADS ARE CRITICAL		
DRAWN	JINSON	11/02/20
CHECKED	R.S.	11/02/20
APPROVED	R.S.	11/02/20

**BRASSTECH** 2001 CARNEGIE AVE.  
INCORPORATED SANTA ANA, CA 92705  
(949) 417-5207

**SQUARE W/S LAVATORY FAUCET**

DWG NO. **2020** REV **D**

SCALE .200 REF. - SHEET 1 OF 2

