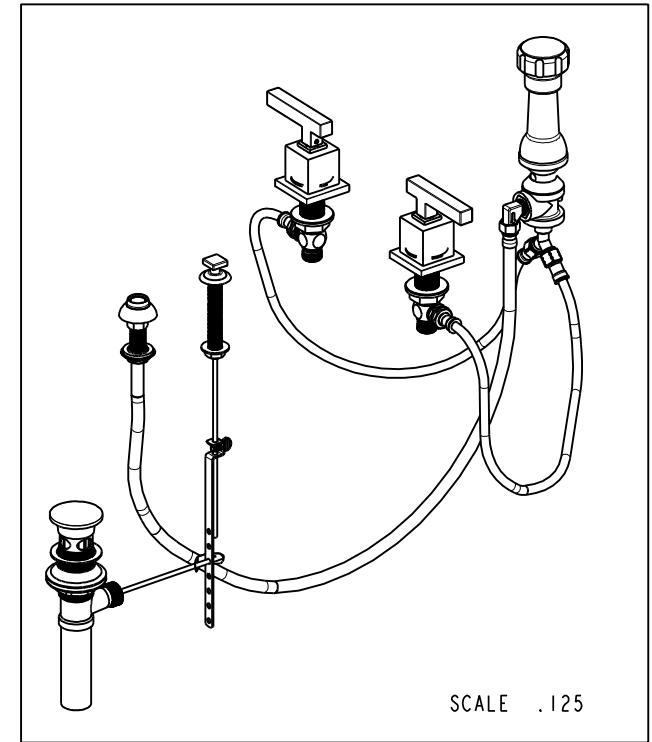
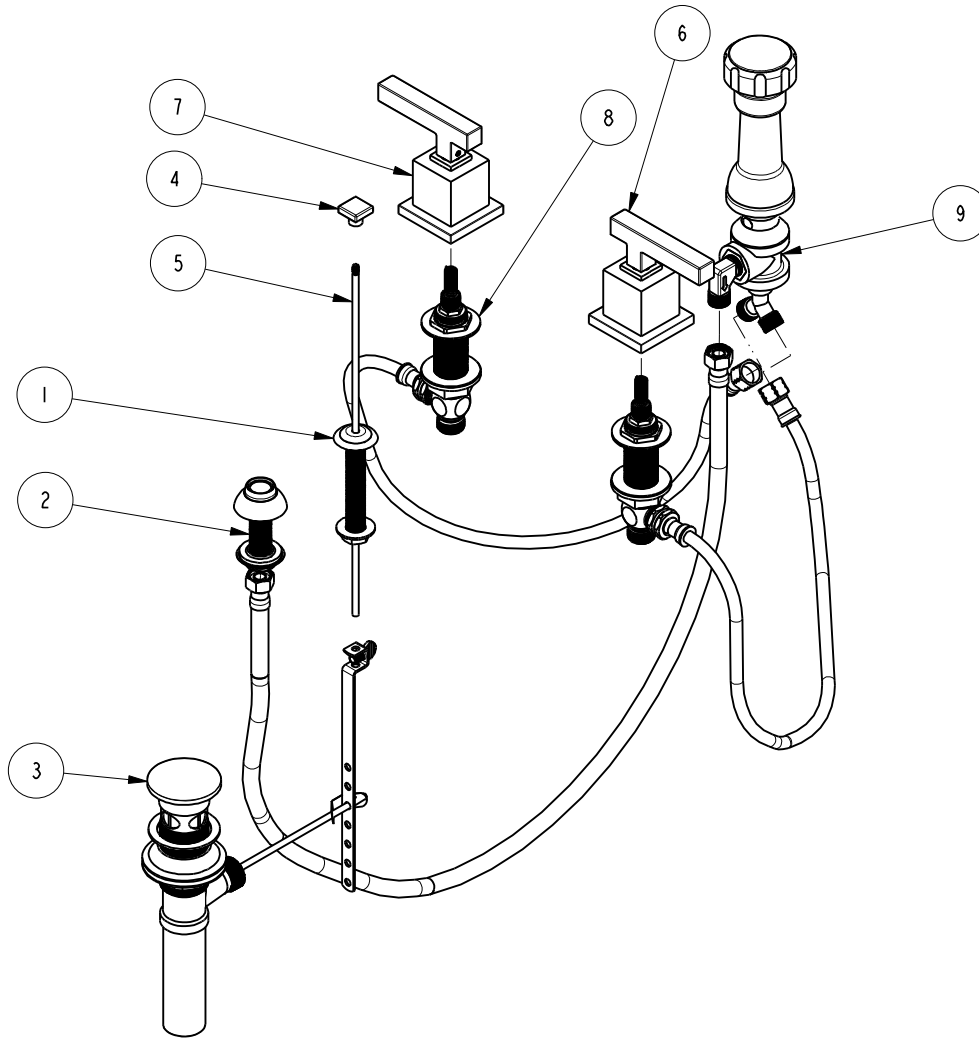


NOTES:

1. TO INSPECT ASSEMBLY, FOLLOW FIRST ARTICLE AND IN PROCESS INSPECTION SHEET.

**BILL OF MATERIAL (CURRENT LEVEL)**

ITEM	PT/ASSY	DESCRIPTION	TYPE	QTY.
1	2-159	POP-UP ROD GUIDE ASSEMBLY	ASSEMBLY	1
2	2-236	DOUCHE SPRAY ASSEMBLY	ASSEMBLY	1
3	325	POP UP ASSEMBLY	ASSEMBLY	1
4	10676	SQUARE POP UP KNOB	PART	1
5	10288	3/16" POP UP ROD	PART	1
6	3-220C	ASSY, HANDLE TRIM, COLD	ASSEMBLY	1
7	3-220H	ASSY, HANDLE TRIM, HOT	ASSEMBLY	1
8	1-542	VALVE KIT - BIDET	ASSEMBLY	1
9	2-235	BIDET DIVERTER / V. BRE	ASSEMBLY	1



ZONE	REV	DESCRIPTION	DATE	APPROVED
-	B	EN-4300c	01/08/21	R.S.
-	A	EO-0259	03/22/04	-
-	-	RELEASED	09/27/99	-

COPYRIGHT 2005 BRASSTECH, INC. THESE DRAWINGS AND THE DESIGNS DEPICTED HEREIN ARE THE PROPRIETARY PROPERTY OF BRASSTECH. ANY USE OR REPRODUCTION IS SUBJECT TO THE EXPRESS APPROVAL OF BRASSTECH. UNAUTHORIZED USE IS STRICTLY PROHIBITED. ALL RIGHTS RESERVED.

TESTING	-	-	-
ASSEMBLY	-	-	-
PLATING	-	-	-
POLISHING	-	NEXT ASSY	USED ON
MACHINING	-	APPLICATION	
TOOLING FIXTURE #	REMOVE ALL BURRS AND SHARP EDGES		

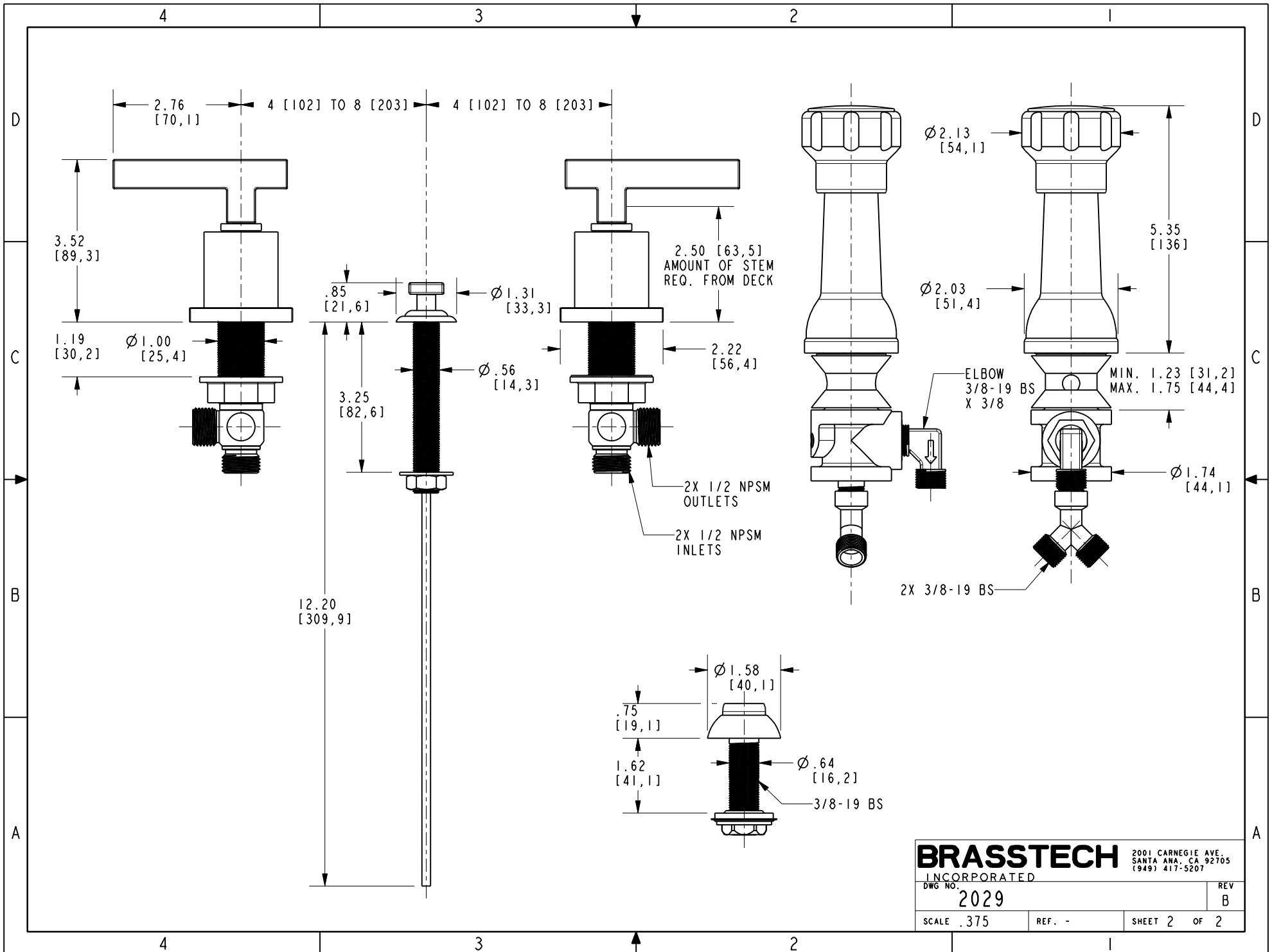
UNITS ARE: INCHES [MM]		
TOLERANCES ARE:		
FRACTIONS DECIMALS	ANGLES	
±1/16"	±°	
.X ±.1 [2,5]		
.XX ±.06 [1,5]		
(X.XXX) DENOTES CRITICAL DIMS.		
ALL THREADS ARE CRITICAL		
DRAWN	JINSON	01/08/21
CHECKED	R.S.	01/08/21
APPROVED	R.S.	01/08/21

**BRASSTECH** 2001 CARNEGIE AVE.  
INCORPORATED SANTA ANA, CA 92705  
(949) 417-5207

**BIDET SET**

DWG NO. **2029** REV **B**

SCALE .175 REF. - SHEET 1 OF 2



**BRASSTECH**  
 INCORPORATED  
 2001 CARNEGIE AVE.  
 SANTA ANA, CA 92705  
 (949) 417-5207

DWG NO. 2029	REV B
SCALE .375	REF. -
SHEET 2 OF 2	