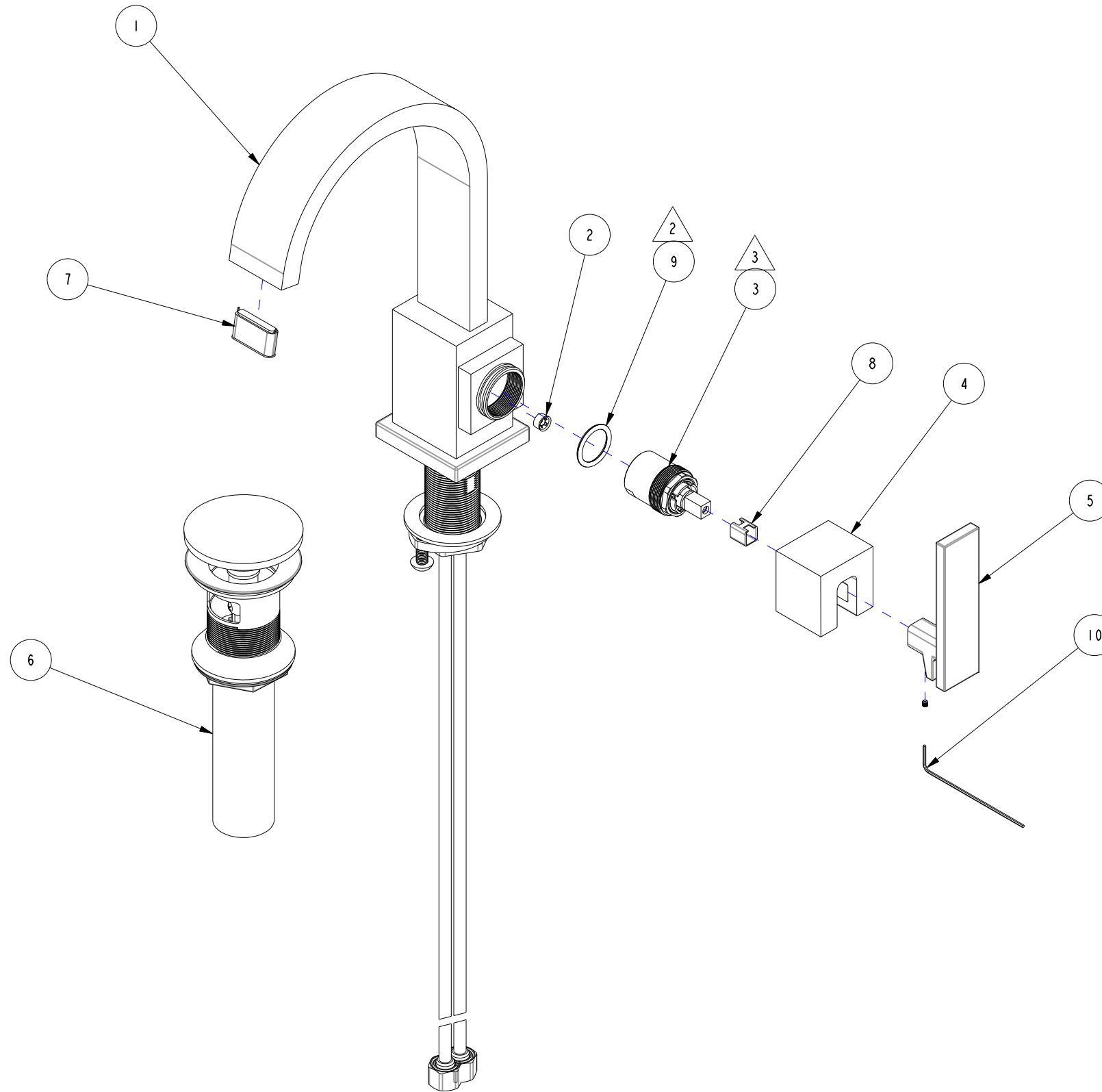


NOTES:

1. TO INSPECT ASSEMBLY, FOLLOW FIRST ARTICLE AND IN PROCESS INSPECTION SHEET.

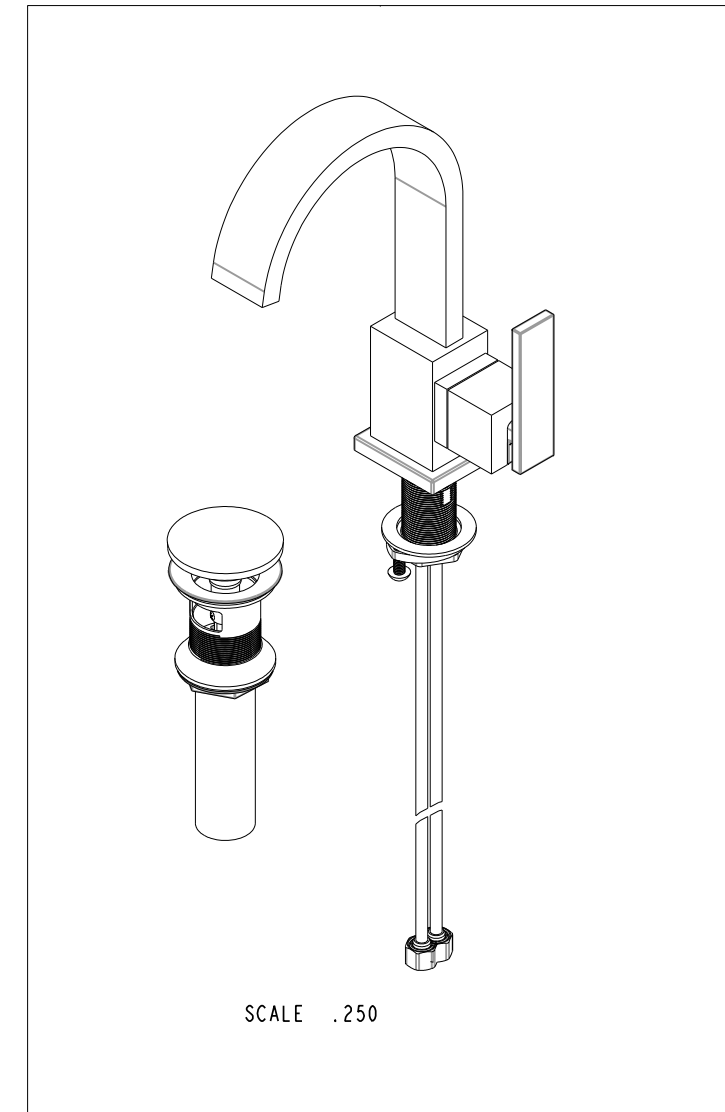
2. APPLY LIGHT FILM OF DOW CORNING SILICON GREASE

3. WHEN TIGHTENING ITEM 4 DURING ASSY, APPLY 50-60 LB-IN OF TORQUE.



BILL OF MATERIAL (CURRENT LEVEL)

ITEM	PT/ASSY	DESCRIPTION	TYPE	QTY.
1	3-792	SPOUT ASSY, SINGLE HOLE	ASSEMBLY	1
2	12401	FLOW REGULATOR, 1.2 GPM, PINK	PART	1
3	1-371	CARTRIDGE	PART	1
4	13942	BONNET	PART	1
5	20-757	HANDLE ASSEMBLY	ASSEMBLY	1
6	330	DRAIN, PUSH DOWN, W/ OVERFLOW	ASSEMBLY	1
7	91567	FLOW STRAIGHTENER 28 X 7, NEOPERL- 02.3295.0	PART	1
8	91534	CARTRIDGE STEM INSERT	PART	1
9	91114	O-RING, #2- 116, EPDM, 65-75 DURO, NSF 61	PART	1
10	92872	HEX KEY, 0.05" ALLOY STEEL	PART	1

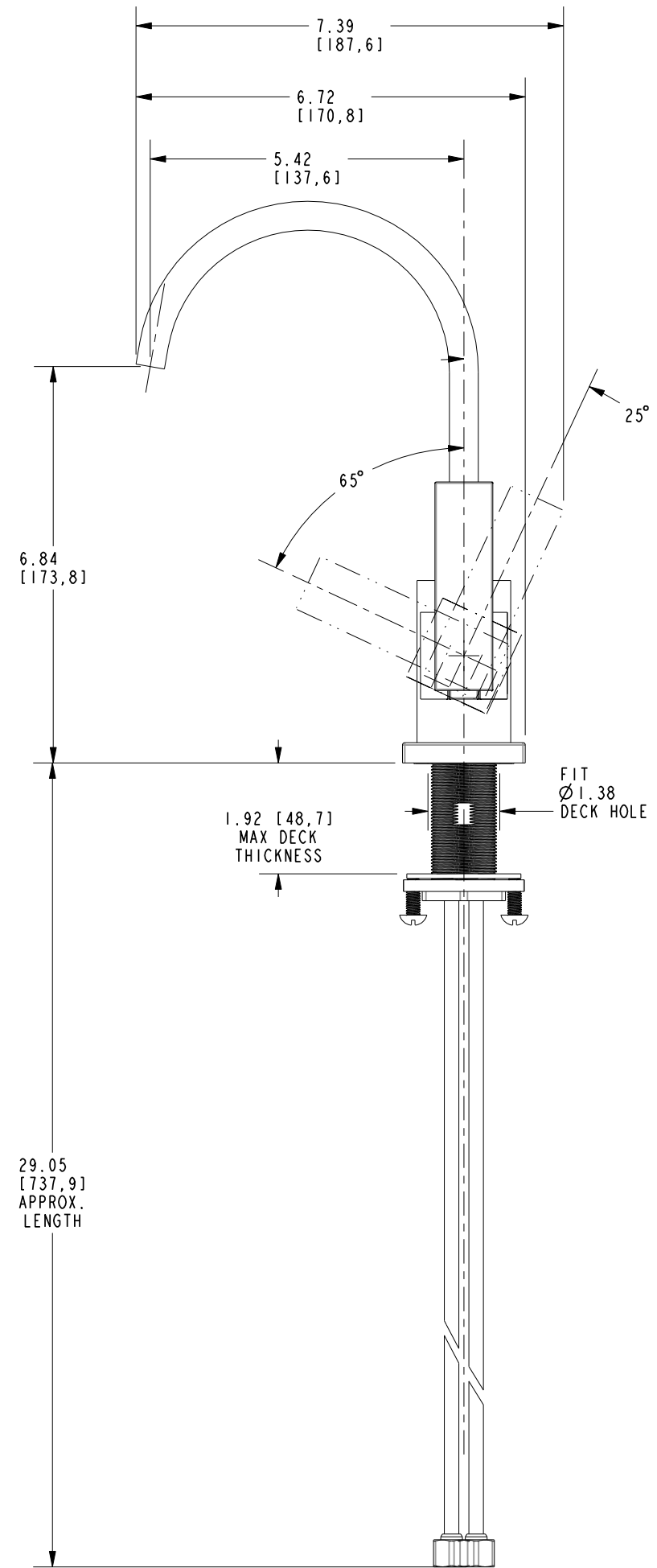
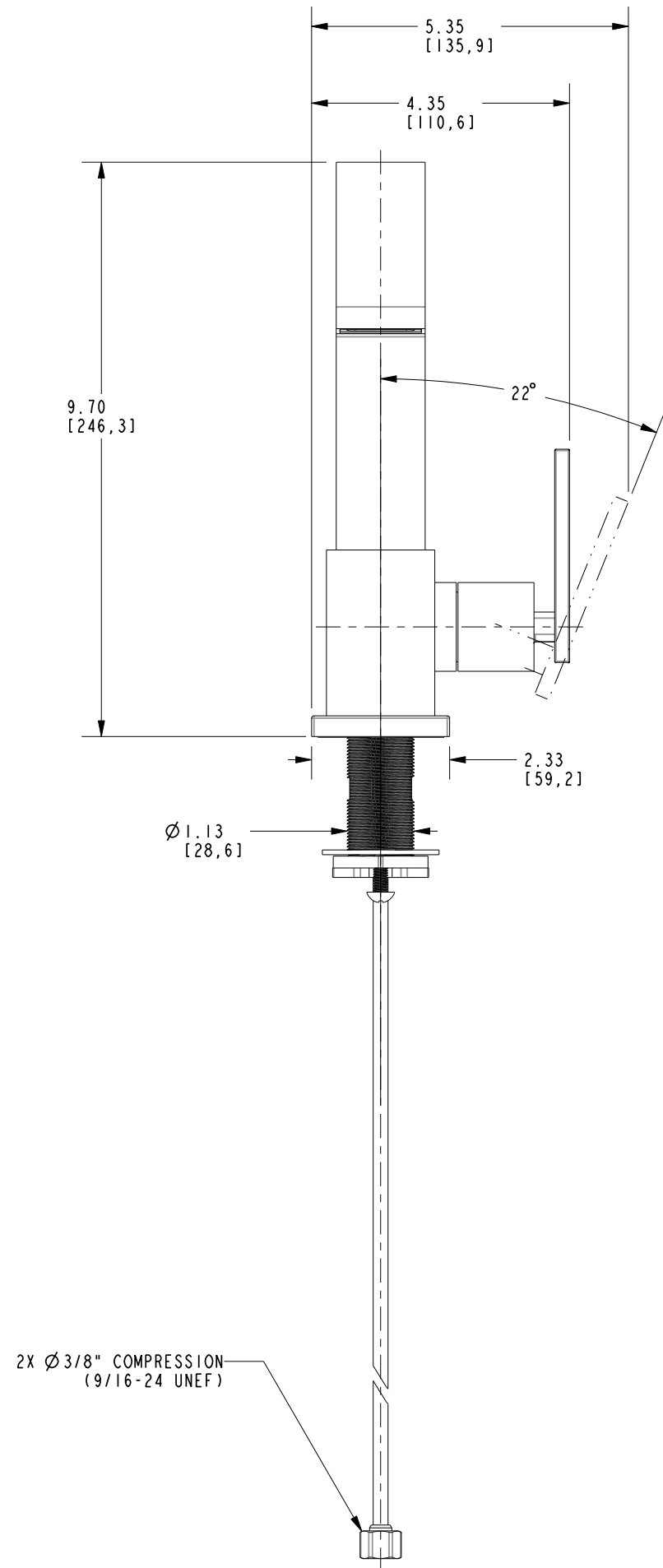


REV	DESCRIPTION	DATE	APPROVED
A	EN-4666	10/10/23	NS
-	EN-4590	01/16/23	NS

COPYRIGHT 2005 BRASSTECH, INC. THESE DRAWINGS AND THE DESIGNS DEPICTED HEREIN ARE THE PROPRIETARY PROPERTY OF BRASSTECH. ANY USE OR REPRODUCTION IS SUBJECT TO THE EXPRESS APPROVAL OF BRASSTECH. UNAUTHORIZED USE IS STRICTLY PROHIBITED. ALL RIGHTS RESERVED.

-	-	UNITS ARE: INCHES [MM]
-	-	TOLERANCES ARE:
-	-	FRACTIONS DECIMALS ANGLES
-	-	±1/16" .X ±.1 [2.5] ±°
-	-	.XX ±.06 [1.5]
-	-	X.XXX DENOTES CRITICAL DIMS.
-	-	ALL THREADS ARE CRITICAL
NEXT ASSY	USED ON	DRAWN NMS 01/13/23
APPLICATION		CHECKED N. SANTOS 01/16/23
REMOVE ALL BURRS AND SHARP EDGES		APPROVED N. SANTOS 01/16/23

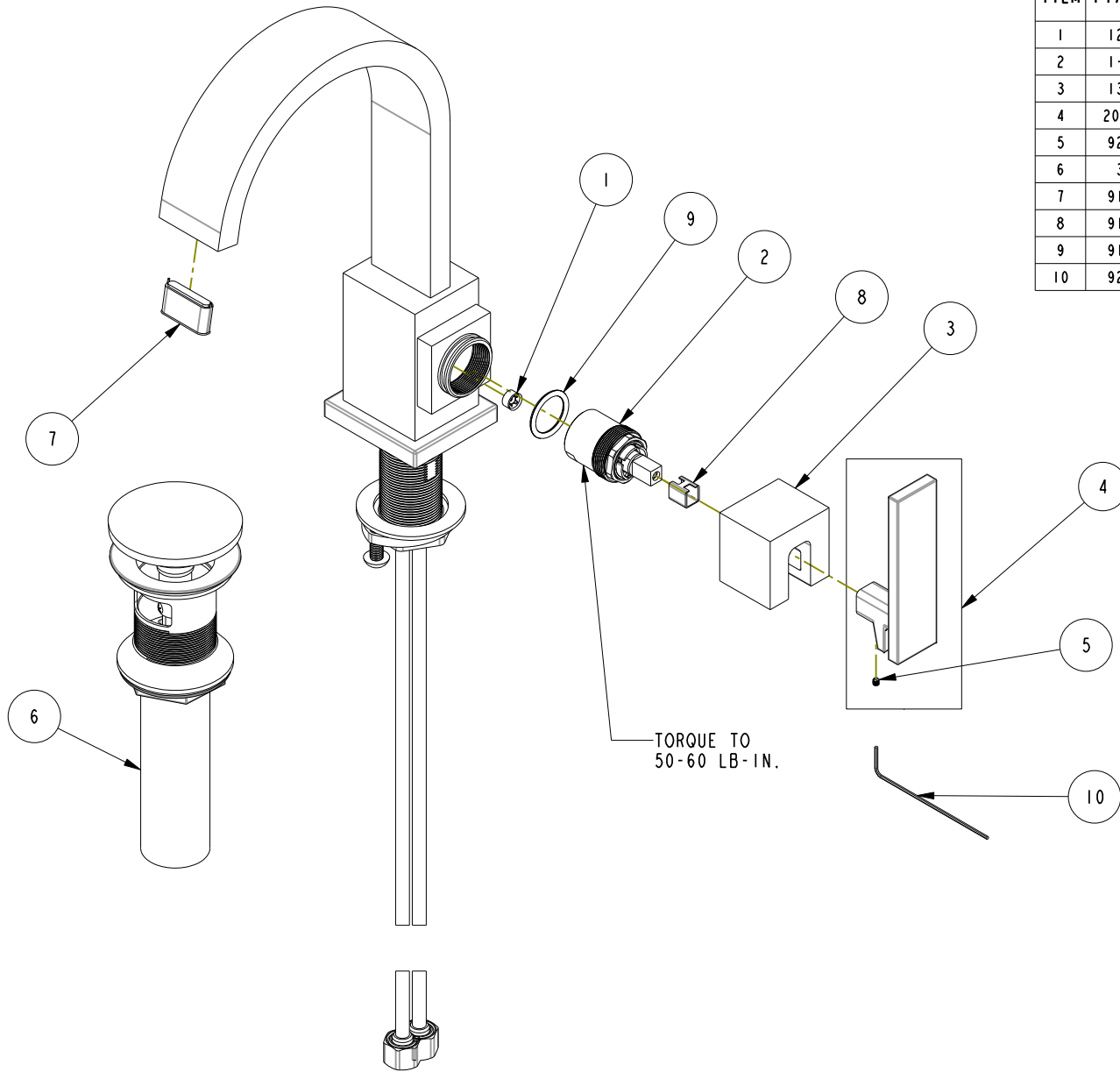
<b>BRASSTECH</b>		2001 CARNEGIE AVE. SANTA ANA, CA 92705 (949) 417-5207	
INCORPORATED		SINGLE HOLE LAVATORY FAUCET	
DWG NO.	2043-1	REV	A
SCALE	.375	REF.	-
SHEET	1	OF	3



<b>BRASSTECH</b>		2001 E. CARNEGIE AVE. SANTA ANA, CA 92705 (949) 417-5207	
DWG NO.	2043-1	REV	A
SCALE	.375	REF.	-
		SHEET	2 OF 3

# REPLACEMENT PARTS

ITEM	PT/ASSY	SPECIFY FINISH	DESCRIPTION
1	12401		FLOW REGULATOR, 1.2 GPM, PINK
2	1-371		CARTRIDGE
3	13942	YES	BONNET
4	20-757	YES	HANDLE ASSEMBLY
5	92834		SCRW, 4-40 X 1/8 SKT HD CUP PT SS
6	330	YES	DRAIN, PUSH DOWN, W/ OVERFLOW
7	91567		FLOW STRAIGHTENER 28 X 7, NEOPERL- 02.3295.0
8	91534		CARTRIDGE STEM INSERT
9	91114		O-RING, #2- 116, EPDM, 65-75 DURO, NSF 61
10	92872		HEX KEY, 0.05" ALLOY STEEL



**SINGLE HOLE LAVATORY FAUCET  
2043-1**

REV A EN-4666 06/03/22 APPROVED RS

**NEWPORT BRASS.**

t: 949.417.5207 | www.newportbrass.com