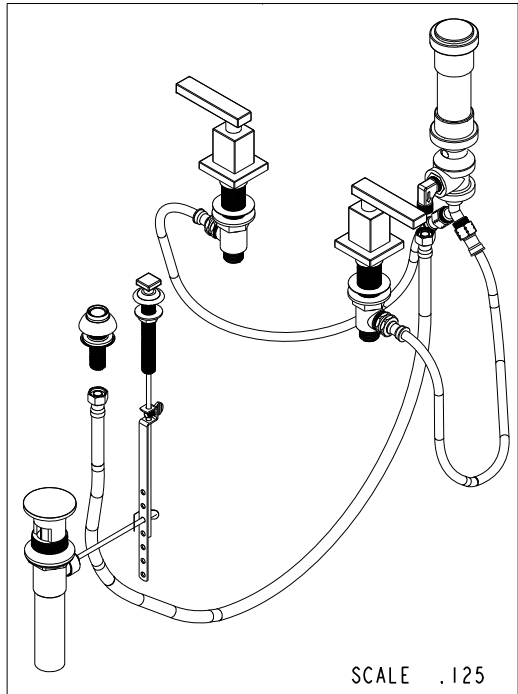
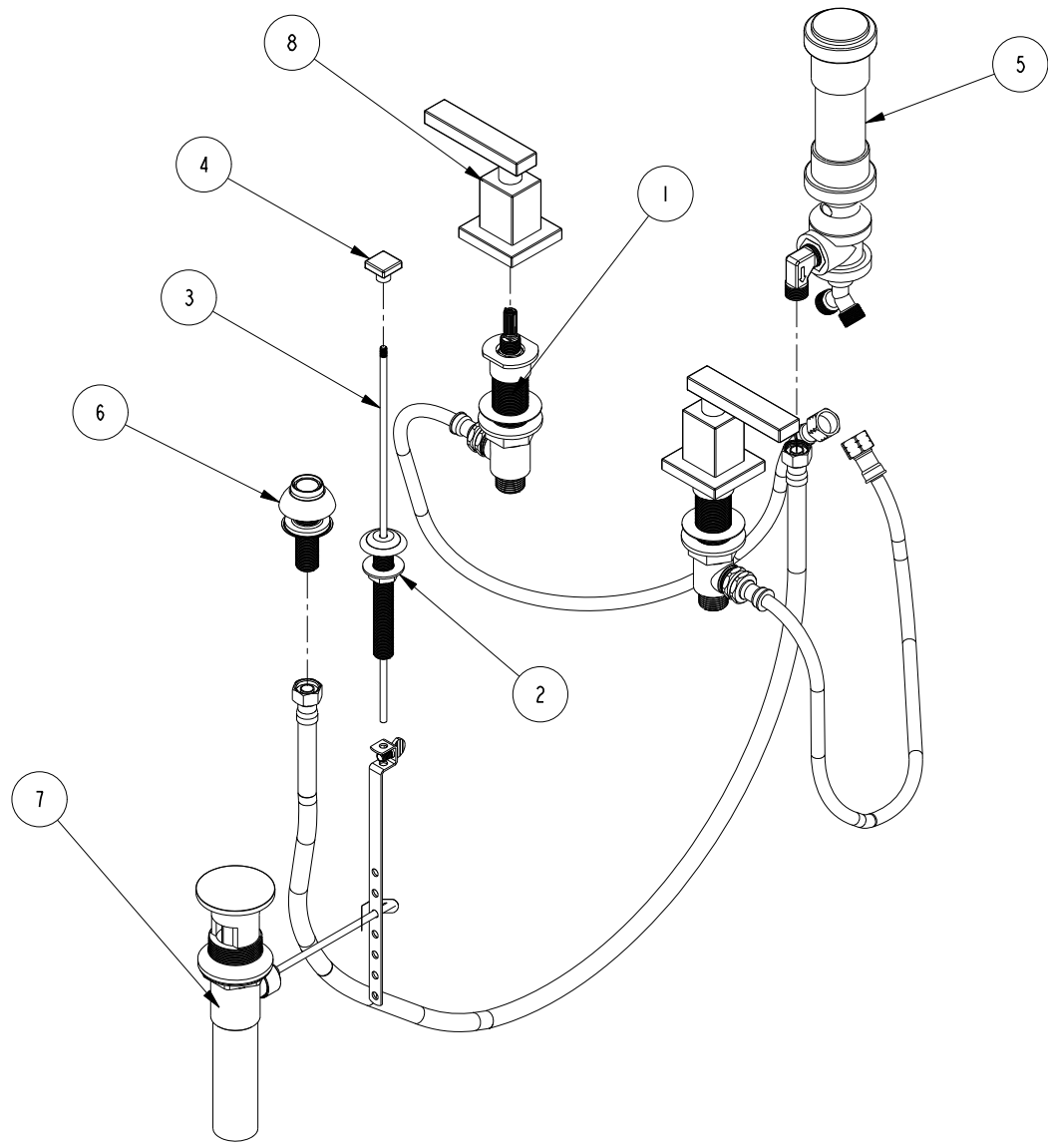


BILL OF MATERIAL (CURRENT LEVEL)

ITEM	PT/ASSY	DESCRIPTION	TYPE	QTY.
1	1-667	VALVE KIT ASSEMBLY	ASSEMBLY	1
2	2-159	POP-UP ROD GUIDE ASSEMBLY	ASSEMBLY	1
3	10288	3/16" POP UP ROD	PART	1
4	10676	SQUARE POP UP KNOB	PART	1
5	8-039	BIDET VACUUM BREAKER DIVERTER ASM	ASSEMBLY	1
6	2-236	DOUCHE SPRAY ASSEMBLY	ASSEMBLY	1
7	325	POP UP ASSEMBLY	ASSEMBLY	1
8	3-442	DIVERTER HANDLE ASM	ASSEMBLY	2



SCALE .125

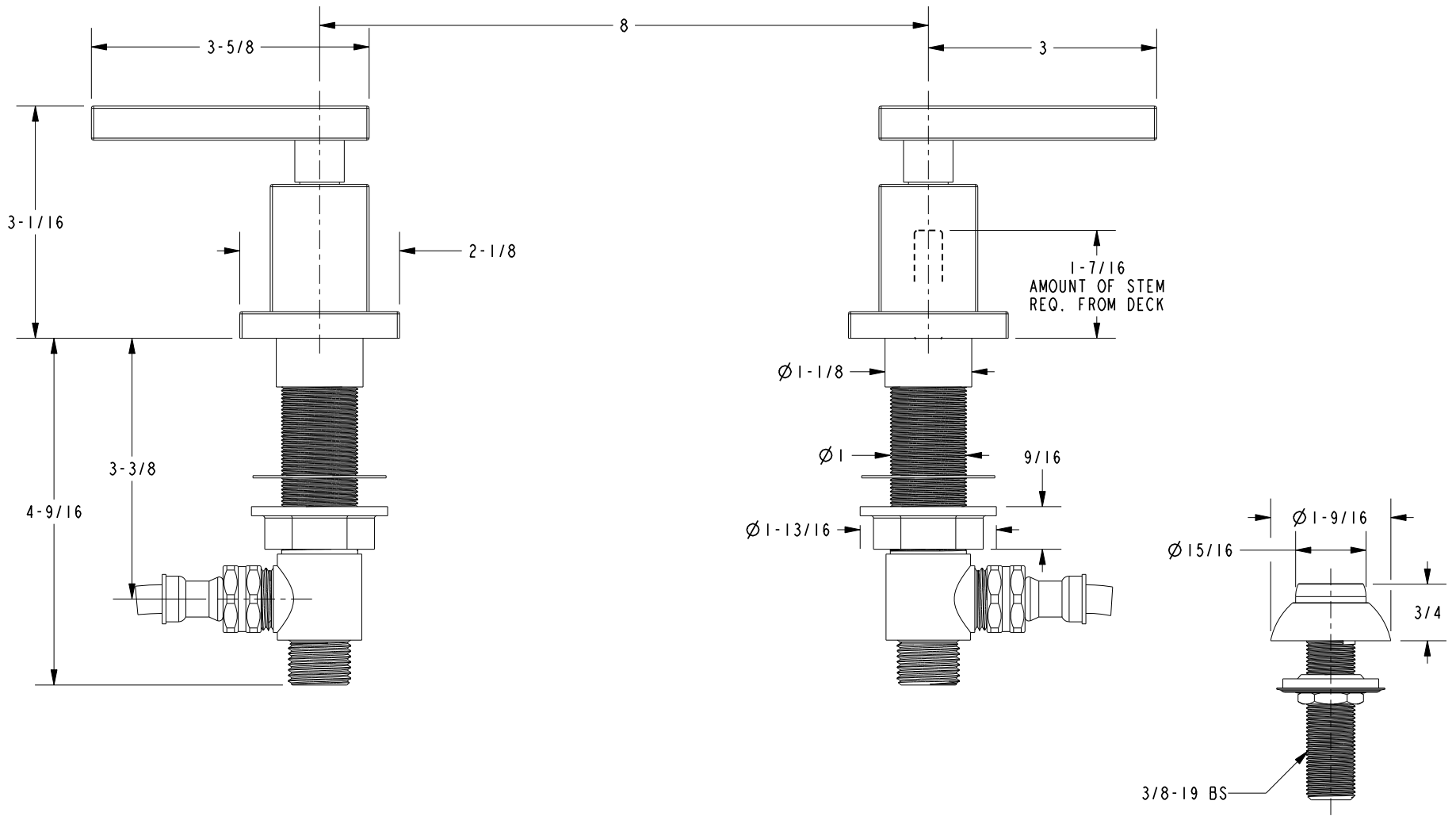
COPYRIGHT 2005 BRASSTECH, INC. THESE DRAWINGS AND THE DESIGNS DEPICTED HEREIN ARE THE PROPRIETARY PROPERTY OF BRASSTECH. ANY USE OR REPRODUCTION IS SUBJECT TO THE EXPRESS APPROVAL OF BRASSTECH. UNAUTHORIZED USE IS STRICTLY PROHIBITED. ALL RIGHTS RESERVED.

BRASSTECH
INCORPORATED
2001 E. CARNEGIE AVE.
SANTA ANA, CA 92705
(949) 417-5207

BIDET SET

ASSY. NO.	2049		A	EN-2541-1	09/05/14
SCALE .188	REF. -	SHEET 1 OF 3	-	EN-1265	10/30/09
			REV	REV DESC	DATE

SPECIFICATION DWG

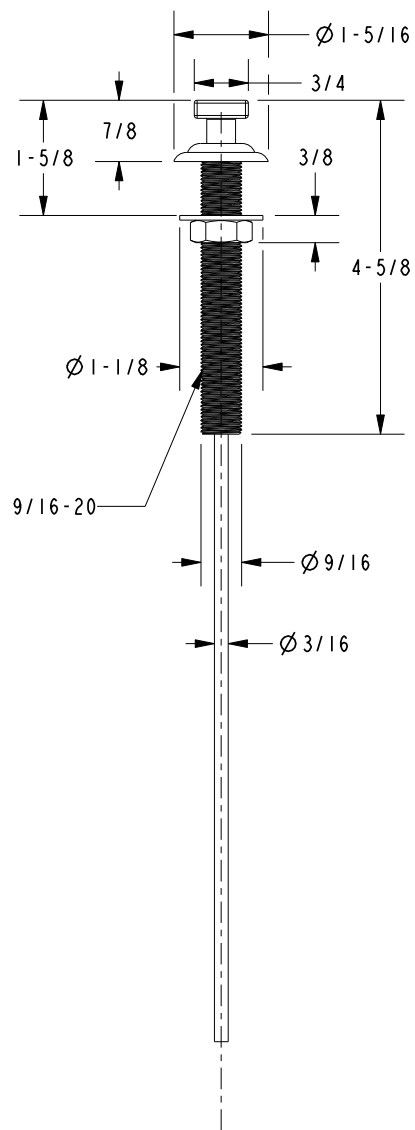
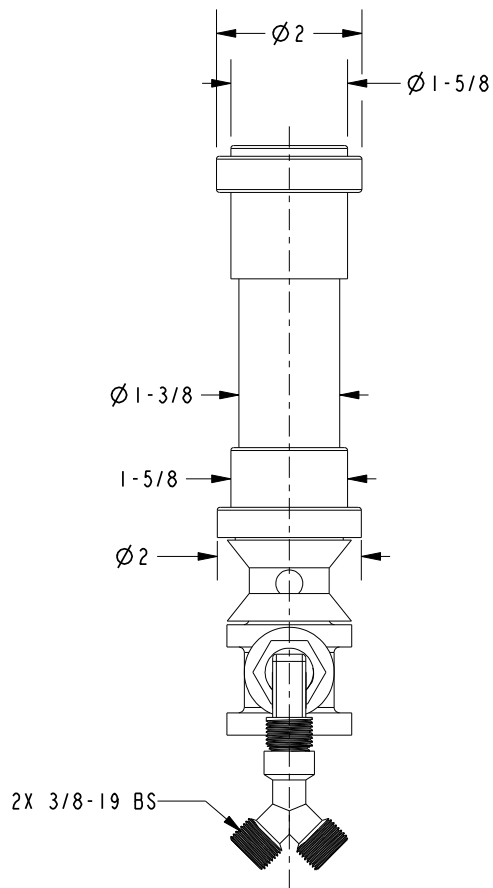
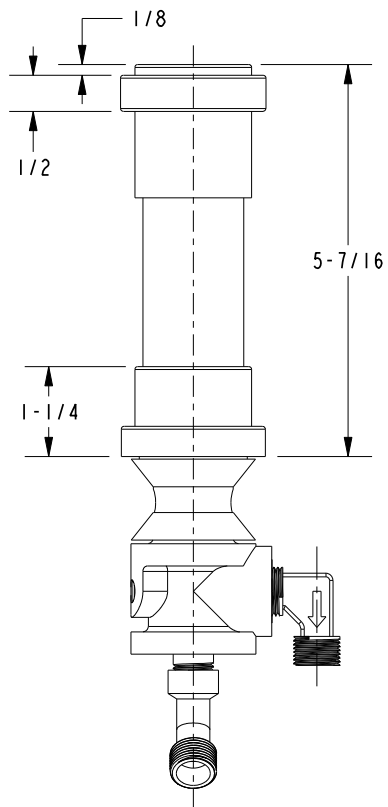


DIMENSIONS ARE IN INCHES AND AN APPROXIMATION OF A TYPICAL INSTALLATION

COPYRIGHT 2005 BRASSTECH, INC. THESE DRAWINGS AND THE DESIGNS DEPICTED HEREIN ARE THE PROPRIETARY PROPERTY OF BRASSTECH. ANY USE OR REPRODUCTION IS SUBJECT TO THE EXPRESS APPROVAL OF BRASSTECH. UNAUTHORIZED USE IS STRICTLY PROHIBITED. ALL RIGHTS RESERVED.

BRASSTECH		2001 CARNEGIE AVE. SANTA ANA, CA 92705 (949) 417-5207
DWG NO.	2049	REV A
SCALE	.500	REF. -
SHEET 2		OF 3

SPECIFICATION DWG



DIMENSIONS ARE IN INCHES AND AN APPROXIMATION OF A TYPICAL INSTALLATION

COPYRIGHT 2005 BRASSTECH, INC. THESE DRAWINGS AND THE DESIGNS DEPICTED HEREIN ARE THE PROPRIETARY PROPERTY OF BRASSTECH. ANY USE OR REPRODUCTION IS SUBJECT TO THE EXPRESS APPROVAL OF BRASSTECH. UNAUTHORIZED USE IS STRICTLY PROHIBITED. ALL RIGHTS RESERVED.

BRASSTECH		2001 CARNEGIE AVE. SANTA ANA, CA 92705 (949) 417-5207
DWG NO.	2049	REV A
SCALE	.375	REF. -
		SHEET 3 OF 3