

NOTES:

1. TO INSPECT ASSEMBLY, FOLLOW FIRST ARTICLE AND IN PROCESS INSPECTION SHEET.

2. REMOVE O-RING FROM ADAPTER BEFORE PLATING.
RE-ASSEMBLE THE O-RING AFTER PLATING.

3. DO NOT PLATE THIS PART.

4. DO NOT PLATE THIS AREA.

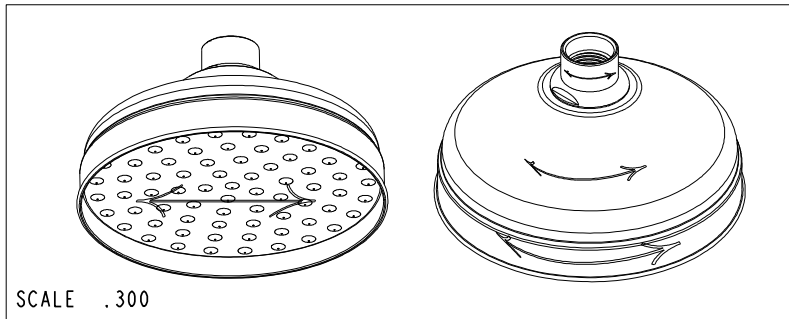
5. REMOVE O-RING FROM FACE PLATE BEFORE PLATING.
RE-ASSEMBLE THE O-RING AFTER PLATING.

6. \longleftrightarrow INDICATES STROKE DIRECTION FOR SATIN FINISHES ONLY.

7. APPLY THIN COAT OF SILICON GREASE FOR O-RING
BEFORE INSTALLATION.

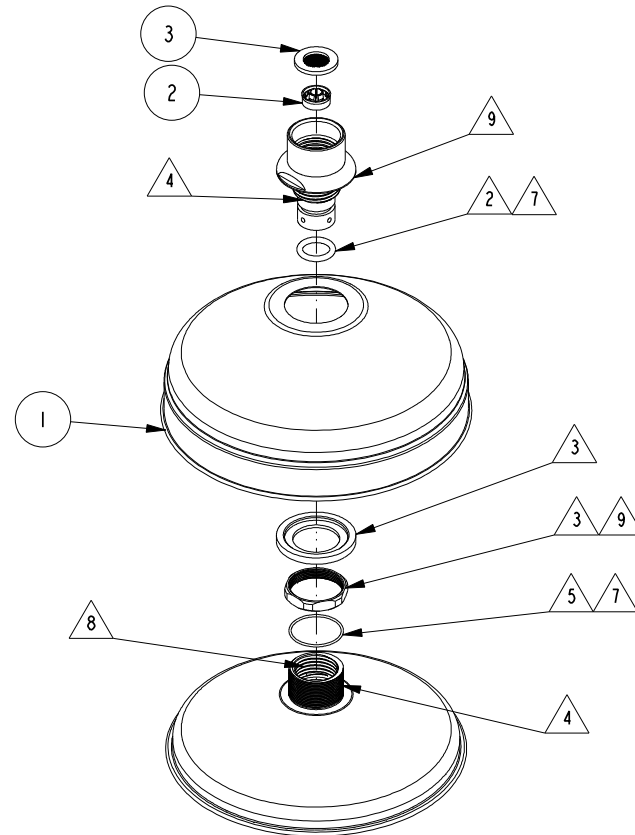
8. APPLY LOCTITE 680.

9. HAND TIGHT.



BILL OF MATERIAL (CURRENT LEVEL)

ITEM	PT/ASSY	DESCRIPTION	TYPE	QTY.
1	209A	SHOWER HEAD 6" DIA.	ASSEMBLY	1
2	12833	FLOW REGULATOR, 1.8 GPM MAX	PART	1
3	91606	GASKET W/ FILTER SCREEN	PART	1



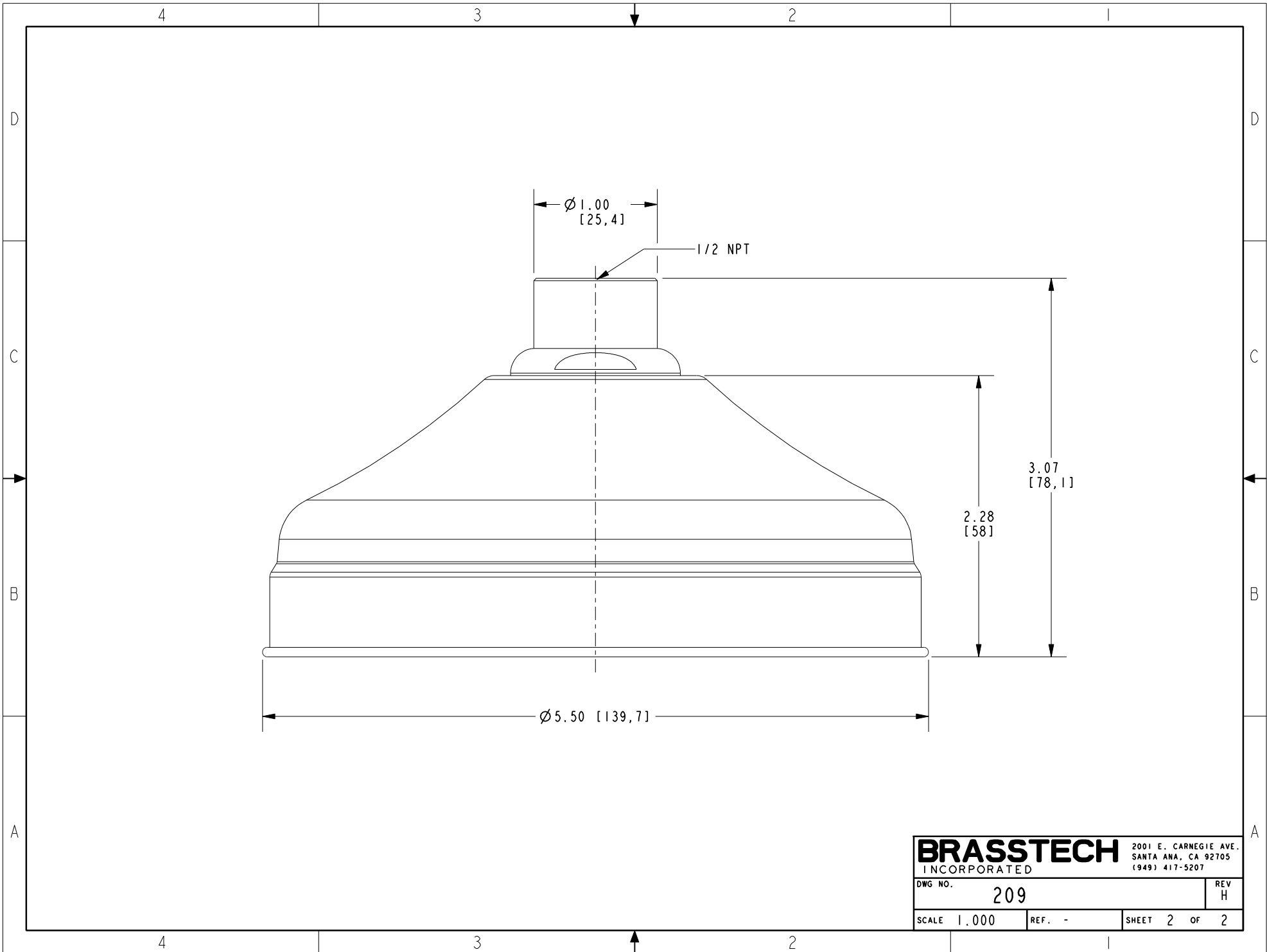
-	H	EN-4300w	03/10/21	R.S.
-	G	EN-3999	10/17/19	C.G.
-	F	EN-3552	03/20/18	-
-	E	EN-3410	01/08/18	-
-	D	EN-2153	7/19/12	-
-	C	EN-1668	04/05/11	-
-	B	EN-1695	01/31/11	-
-	A	EN-1551	05/06/10	-
-	-	EO-0860	09/06/07	-
ZONE	REV	DESCRIPTION	DATE	APPROVED

COPYRIGHT 2005 BRASSTECH, INC.
THESE DRAWINGS AND THE DESIGNS
DEPICTED HEREIN ARE THE PROPRIETARY
PROPERTY OF BRASSTECH. ANY USE
OR REPRODUCTION IS SUBJECT TO
THE EXPRESS APPROVAL OF BRASSTECH.
UNAUTHORIZED USE IS STRICTLY
PROHIBITED. ALL RIGHTS RESERVED.

TESTING	-	-	-
ASSEMBLY	-	-	-
PLATING	-	-	-
POLISHING	-	NEXT ASSY	USED ON
MACHINING	-	APPLICATION	
TOOLING FIXTURE #	REMOVE ALL BURRS AND SHARP EDGES		

UNITS ARE: INCHES [MM]		
TOLERANCES ARE:		
FRACTIONS	DECIMALS	ANGLES
$\pm 1/16"$.X $\pm .1$ [2.5]	$\pm 1^\circ$
	.XX $\pm .06$ [1.5]	
(X.XXX) DENOTES CRITICAL DIMS. ALL THREADS ARE CRITICAL		
DRAWN	JIMSON	10/17/19
CHECKED	C.G.	10/17/19
APPROVED	C.G.	10/17/19

BRASSTECH		2001 CARNEGIE AVE. SANTA ANA, CA 92705 (949) 417-5207	
INCORPORATED			
SHOWER HEAD 6" DIA.			
DWG NO.		REV	
209		H	
SCALE	REF.	SHEET	OF
.300	-	1	2



BRASSTECH		2001 E. CARNEGIE AVE. SANTA ANA, CA 92705 (949) 417-5207	
DWG NO.	209	REV	H
SCALE	1.000	REF.	-
SHEET		2	OF 2