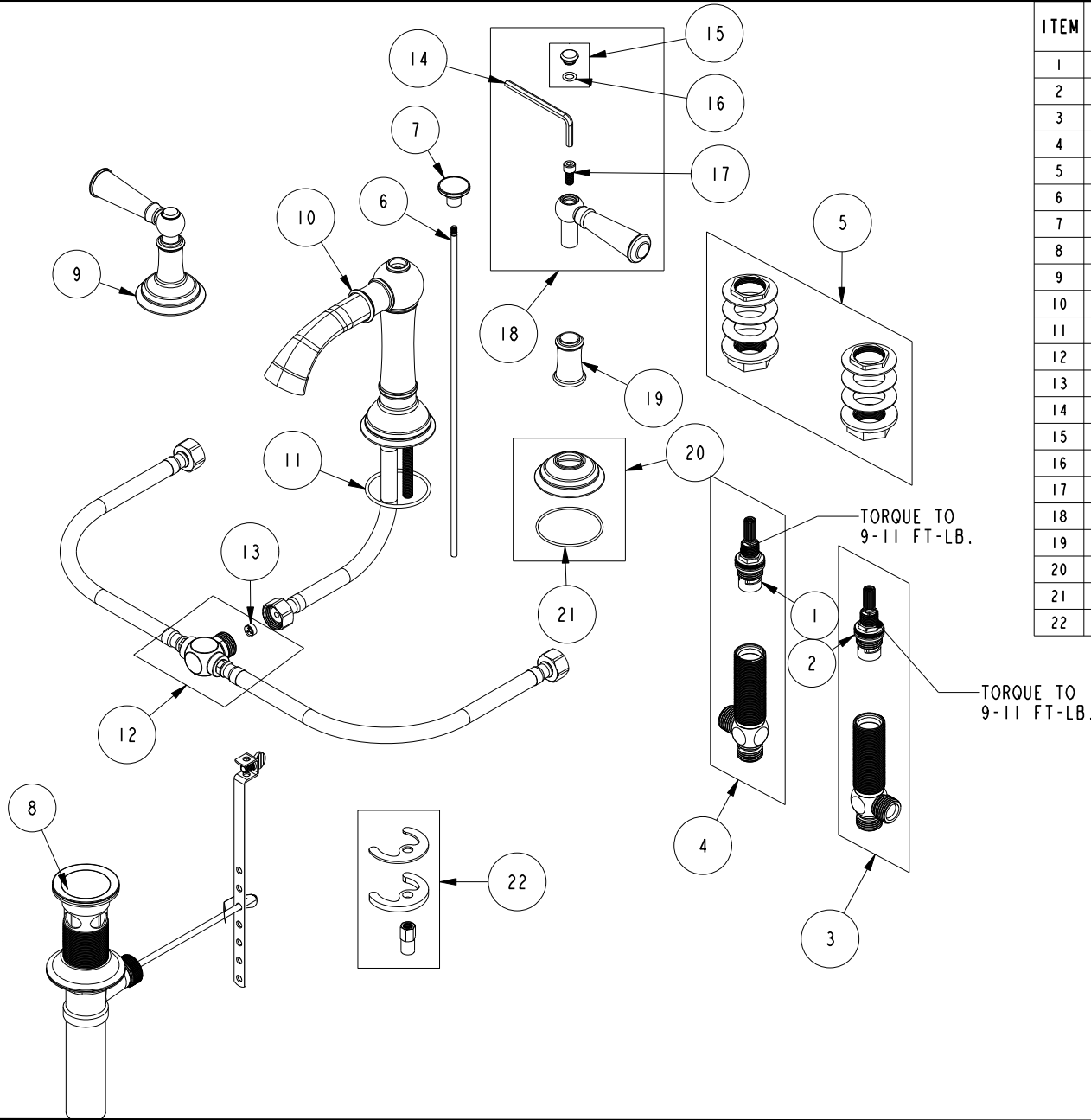


REPLACEMENT PARTS



ITEM	PT/ASSY	SPECIFY FINISH	DESCRIPTION
1	1-002		W/S CARTRIDGE - HOT
2	1-001		W/S CARTRIDGE - COLD
3	1-526		W/S CART/BODY ASM (COLD)
4	1-527		W/S CART/BODY ASM (HOT)
5	1-027		WIDE SPREAD MOUNTING HARDWARE
6	10288	YES	3/16" POP UP ROD
7	11583	YES	POP-UP KNOB
8	325	YES	POP UP ASSEMBLY
9	3-373	YES	LEVER HANDLE AND ESC. ASM
10	2-767	YES	W/S SPOUT ASM
11	91756		O-RING #2-134, EP, 50 DURO - GREY
12	1-654		FLOW REGULATOR ASM, 1.2 GPM
13	12400		FLOW REGULATOR, 1.2 GPM, PINK
14	92846		HEX KEY, 3/16" ALLOY STEEL
15	20-682	YES	HANDLE CAP ASM
16	91158		O-RING, 2 X 7MM ID, EPDM, 65-75 DURO
17	92141		SCREW, CAP HD 1/4-20 X 1/2
18	2-636	YES	LEVER HANDLE ASSEMBLY
19	11590	YES	HANDLE BONNET
20	2-652	YES	HANDLE ESCUTCHEON ASM
21	91757		O-RING, #2-033, EPDM, 50 DURO
22	1-491		SPOUT MOUNTING KIT

W/S LAVATORY FAUCET
2410

REV H EN-4734 11/09/23 APPROVED R.S.

NEWPORT BRASS.

t: 949.417.5207 | www.newportbrass.com