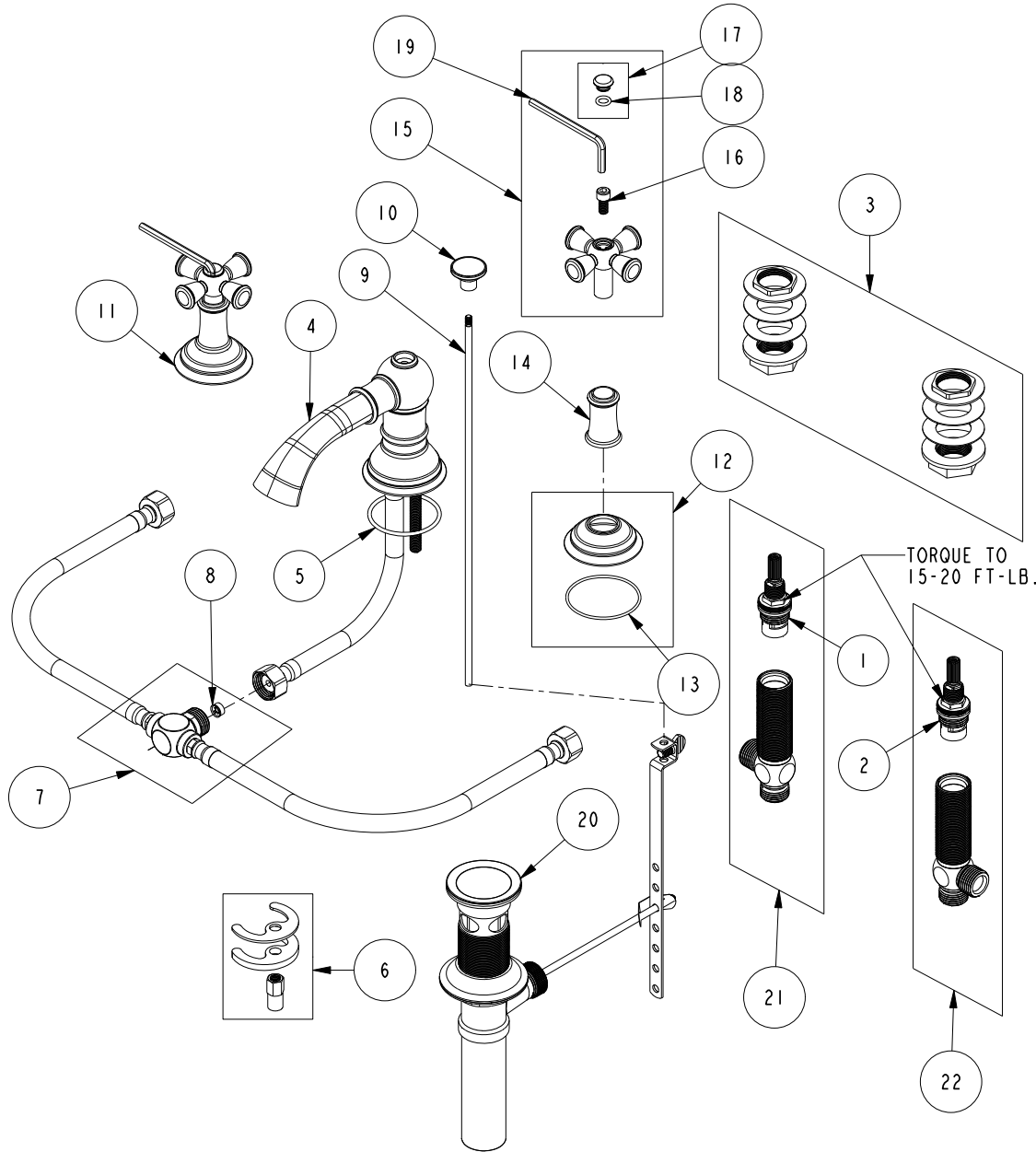


REPLACEMENT PARTS



| ITEM | PT/ASSY | SPECIFY FINISH | DESCRIPTION |
|------|---------|----------------|--------------------------------------|
| 1 | 1-002 | | W/S CARTRIDGE - HOT |
| 2 | 1-001 | | W/S CARTRIDGE - COLD |
| 3 | 1-027 | | WIDE SPREAD MOUNTING HARDWARE |
| 4 | 2-768 | YES | W/S SPOUT ASM |
| 5 | 91756 | | O-RING #2-134, EP, 50 DURO - GREY |
| 6 | 1-491 | | SPOUT MOUNTING KIT |
| 7 | 1-654 | | FLOW REGULATOR ASM, 1.2 GPM |
| 8 | 12400 | | FLOW REGULATOR, 1.2 GPM, PINK |
| 9 | 10288 | YES | 3/16" POP UP ROD |
| 10 | 11583 | YES | POP-UP KNOB |
| 11 | 3-374 | YES | CROSS HANDLE AND ESC. ASM |
| 12 | 2-652 | YES | HANDLE ESCUTCHEON ASM |
| 13 | 91757 | | O-RING, #2-033, EPDM, 50 DURO |
| 14 | 11590 | YES | HANDLE BONNET |
| 15 | 2-637 | YES | CROSS HANDLE ASSY |
| 16 | 92141 | | SCREW, CAP HD 1/4-20 X 1/2 |
| 17 | 20-682 | YES | HANDLE CAP ASM |
| 18 | 91158 | | O-RING, 2 X 7MM ID, EPDM, 65-75 DURO |
| 19 | 92846 | | HEX KEY, 3/16" ALLOY STEEL |
| 20 | 325 | YES | POP UP ASSEMBLY |
| 21 | 1-527 | | W/S CART/BODY ASM (HOT) |
| 22 | 1-526 | | W/S CART/BODY ASM (COLD) |

LAVATORY FAUCET
2420

REV G EN-4587-1 03/24/23 APPROVED R.S.

NEWPORT BRASS.

t: 949.417.5207 | www.newportbrass.com