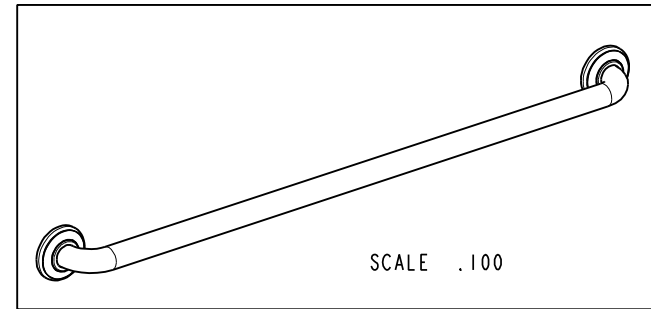
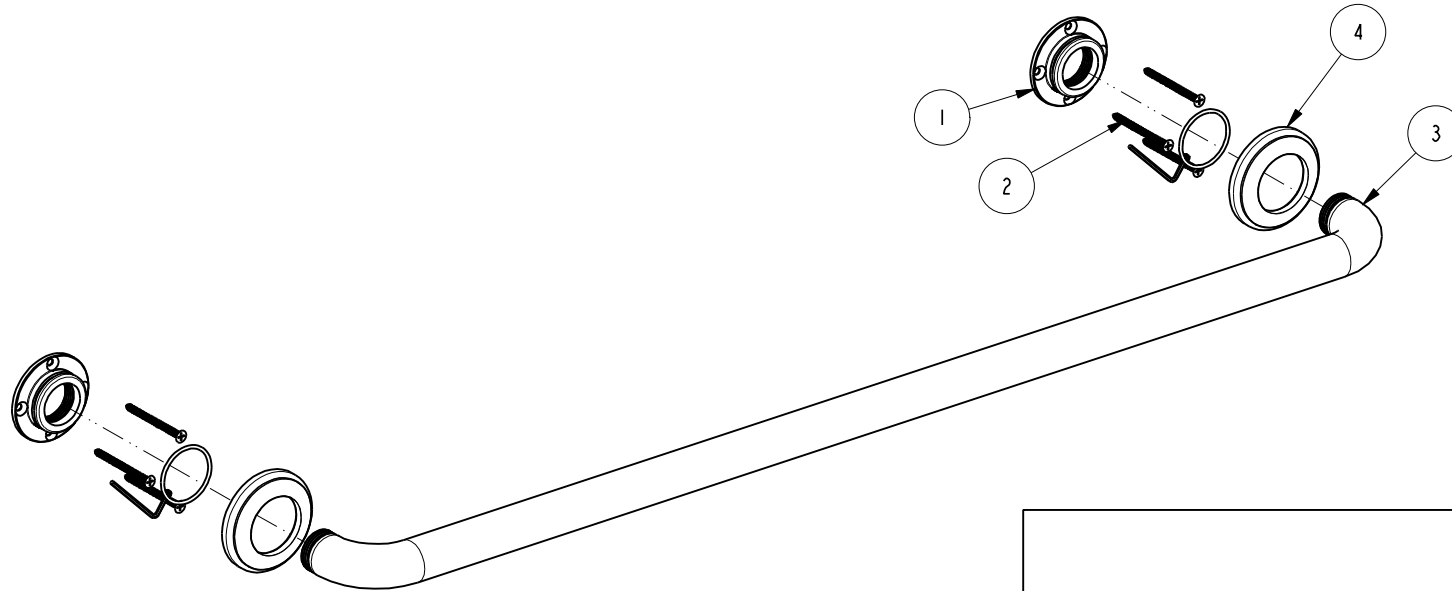


NOTES:

1. TO INSPECT ASSEMBLY, FOLLOW FIRST ARTICLE AND IN PROCESS INSPECTION SHEET.

BILL OF MATERIAL (CURRENT LEVEL)

ITEM	PT/ASSY	DESCRIPTION	TYPE	QTY.
1	1995	MOUNTING FLANGE	PART	2
2	199X	GRAB BAR MOUNTING HARDWARE PACK	ASSEMBLY	2
3	5085	GRAB BAR AND ADAPTER ASSY	ASSEMBLY	1
4	40681	GRAB BAR TRIM RING	PART	2



					TESTING		-	-	-	UNITS ARE: INCHES [MM] TOLERANCES ARE: FRACTIONS DECIMALS ANGLES ±1/16" .X ±.1 [2.5] ±1° .XX ±.06 [1.5] (X.XXX) DENOTES CRITICAL DIMS. ALL THREADS ARE CRITICAL	BRASSTECH 2001 CARNEGIE AVE. INCORPORATED SANTA ANA, CA 92705 (949) 417-5207					
					ASSEMBLY		-	-	-							
					PLATING		-	-	-							
					POLISHING		-	NEXT ASSY	USED ON							
					MACHINING		-	APPLICATION								
ZONE	REV	DESCRIPTION	DATE	APPROVED	TOOLING FIXTURE #		REMOVE ALL BURRS AND SHARP EDGES			CHECKED	R.S.	06/22/21	DWG NO.	2440-3936	REV	B
										APPROVED	R.S.	06/22/21	SCALE	.312	REF.	-
													SHEET	1	OF	2

D
C
B
A

D
C
B
A

4

3

2

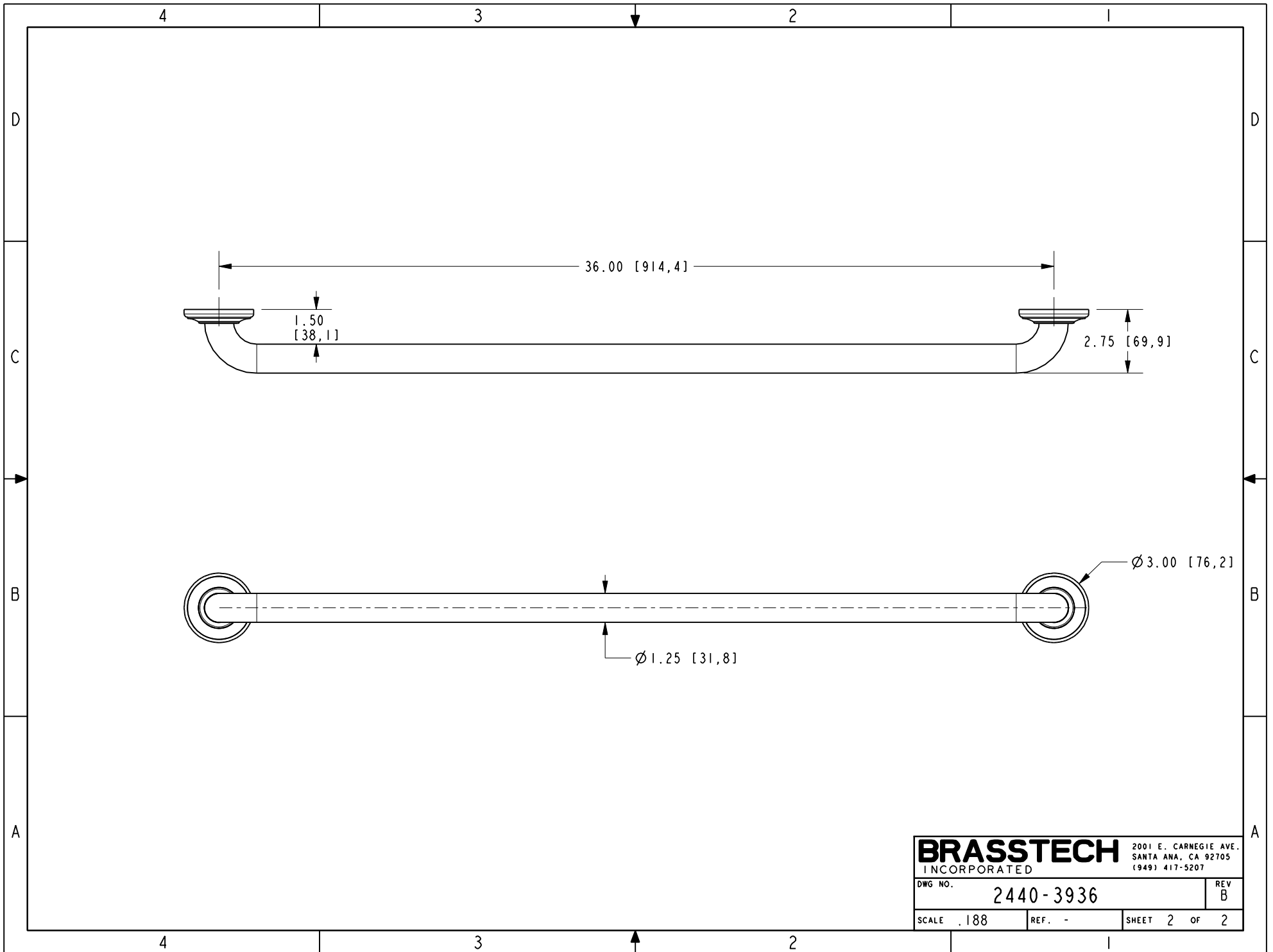
1

4

3

2

1



BRASSTECH		2001 E. CARNEGIE AVE. SANTA ANA, CA 92705 (949) 417-5207
DWG NO.	2440-3936	REV B
SCALE .188	REF. -	SHEET 2 OF 2