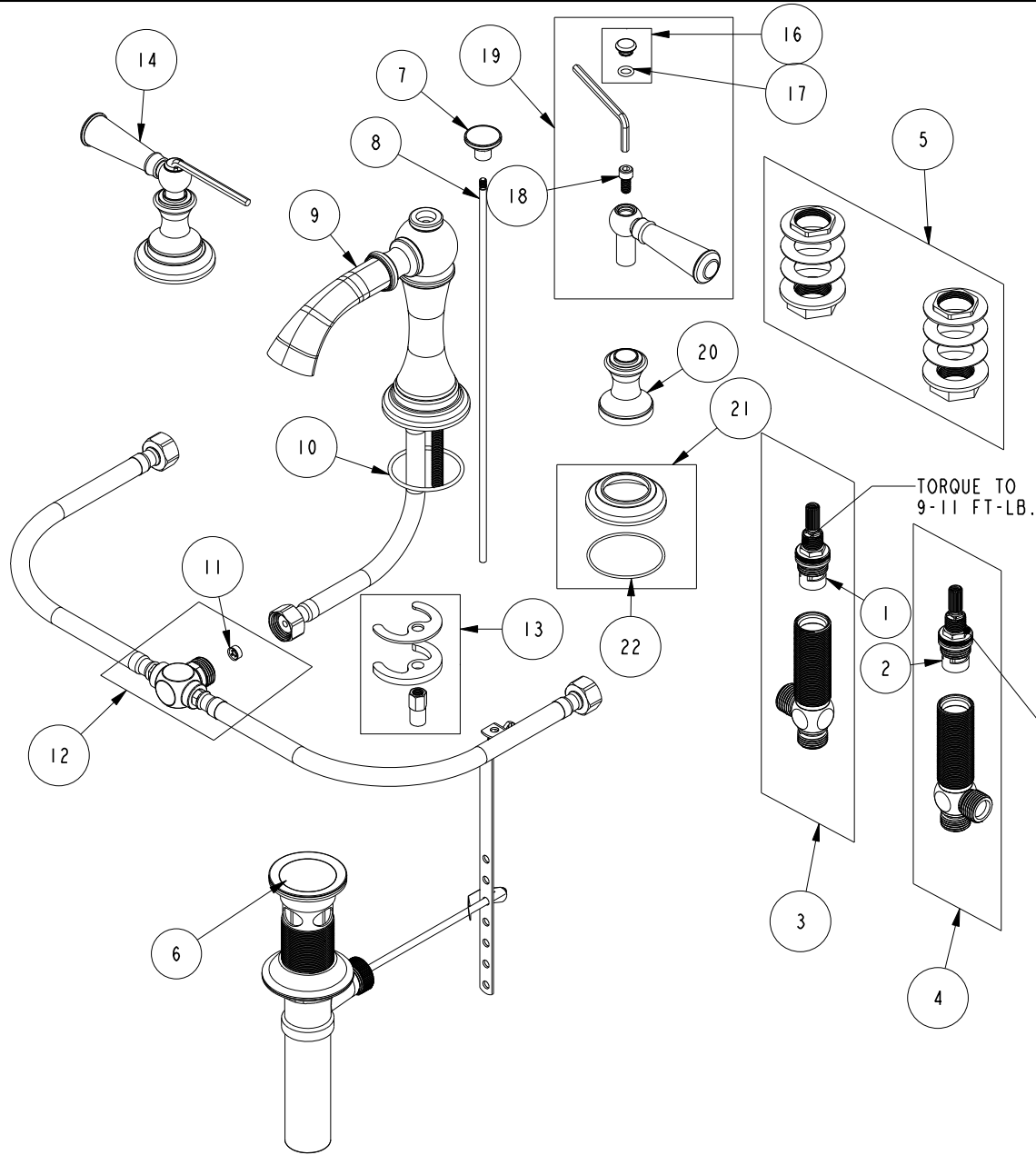


# REPLACEMENT PARTS



ITEM	PT/ASSY	SPECIFY FINISH	DESCRIPTION
1	1-002		W/S CARTRIDGE - HOT
2	1-001		W/S CARTRIDGE - COLD
3	1-527		W/S CART/BODY ASM (HOT)
4	1-526		W/S CART/BODY ASM (COLD)
5	1-027		WIDE SPREAD MOUNTING HARDWARE
6	325	YES	POP UP ASSEMBLY
7	11583	YES	POP-UP KNOB
8	10288	YES	3/16" POP UP ROD
9	2-769	YES	SPOUT ASSEMBLY, WIDE SPREAD
10	91756		O-RING #2-134, EP, 50 DURO - GREY
11	12400		FLOW REGULATOR, 1.2 GPM, PINK
12	1-654		FLOW REGULATOR ASM, 1.2 GPM
13	1-491		SPOUT MOUNTING KIT
14	3-379	YES	LEVER HANDLE ASSEMBLY
15	92846		HEX KEY, 3/16" ALLOY STEEL
16	20-682	YES	HANDLE CAP ASM
17	91158		O-RING, 2 X 7MM ID, EPDM, 65-75 DURO
18	92141		SCREW, CAP HD 1/4-20 X 1/2
19	2-636	YES	LEVER HANDLE ASSEMBLY
20	11610	YES	HANDLE BONNET
21	2-656	YES	HANDLE ESCUTCHEON ASM
22	91757		O-RING, #2-033, EPDM, 50 DURO

W/S LAVATORY FAUCET  
2450

REV H EN-4734 11/09/23 APPROVED R.S.

**NEWPORT BRASS.**

t: 949.417.5207 | www.newportbrass.com