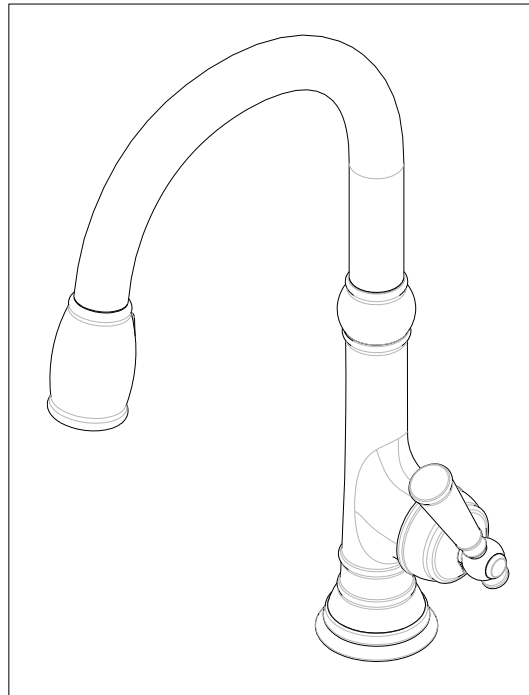


NOTES:

- (NI) 1. FIT / FORM / FUNCTION SHALL FOLLOW PS-E.008.
- 2. PUT THESE ITEMS IN SEPARATE PLASTIC BAGS.
- 3. TORQUE TO 7.5-8.5 LB-FT.
- 4. APPLY THIN COAT OF SILICON GREASE FOR ALL O-RINGS BEFORE INSTALLATION.
- 5. APPLY LOCTITE 242, IF SCREW DOES NOT HAVE NYLON PATCH.
- 6. APPLY LOCTITE 680.



BILL OF MATERIAL (CURRENT LEVEL)

ITEM	PT/ASSY	DESCRIPTION	TYPE	QTY.
1	2-783	BASE RING ASM	ASSEMBLY	1
2	2-785	MAIN BODY ASM, JACOBEAN	ASSEMBLY	1
3	12753	SPOUT ADAPTER	PART	1
4	91712	SLEEVE	PART	1
5	91030	O-RING, #2- 115, EPDM, 65-75 DURO, NSF 61	PART	4
6	12493	SPOUT	PART	1
7	91544	MAGNET DOCKING	ASSEMBLY	1
8	3-417	SPRAY HEAD, JACOBEAN	ASSEMBLY	1
9	11877	HOSE, PULLDOWN SWIVEL	ASSEMBLY	1
10	1-064	SINGLE LEVER CARTRIDGE	PART	1
11	2-781	CART. RETAINER ASM	ASSEMBLY	1
12	91255	O-RING, #2- 011, EPDM, 65-75 DURO, NSF-61	PART	2
13	91568	RETAINER CLIP	PART	1
14	1-256	MOUNTING KIT	ASSEMBLY	1
15	91341	ZIP TIE	PART	1
16	98044	LABEL - HOT	PART	1
17	1-286	WEIGHT ASM	ASSEMBLY	1
18	91534	CARTRIDGE STEM INSERT	PART	1
19	12835	HANDLE HUB	PART	1
20	20-314	HANDLE LEVER ASM	ASSEMBLY	1
21	92035	SCRW, M4 X .7 X 10 PHL FLT HD SS	PART	1
22	2-778	CAP ASM	ASSEMBLY	1

-	L	EN-3413f	02/26/18	JM
-	K	EN-3413d	01/10/18	JM
-	J	EN-3034L	09/08/17	J.A
-	H	EN-3034	04/07/17	J.A
-	G	EN-2500	04/22/13	-
-	F	EN-2443a	04/18/13	-
-	E	EN-2293	10/02/12	-
-	D	EN-2211	07/06/12	-
-	C	EN-2181	06/11/12	-
-	B	EN-2098	03/29/12	-
-	A	EN-1552-4A	09/08/11	-
ZONE	REV	DESCRIPTION	DATE	APPROVED

COPYRIGHT 2005 BRASSTECH, INC. THESE DRAWINGS AND THE DESIGNS DEPICTED HEREIN ARE THE PROPRIETARY PROPERTY OF BRASSTECH. ANY USE OR REPRODUCTION IS SUBJECT TO THE EXPRESS APPROVAL OF BRASSTECH. UNAUTHORIZED USE IS STRICTLY PROHIBITED. ALL RIGHTS RESERVED.

TESTING	-	-	-
ASSEMBLY	-	-	-
PLATING	-	-	-
POLISHING	-	NEXT ASSY	USED ON
MACHINING	-	APPLICATION	
TOOLING FIXTURE #	REMOVE ALL BURRS AND SHARP EDGES		

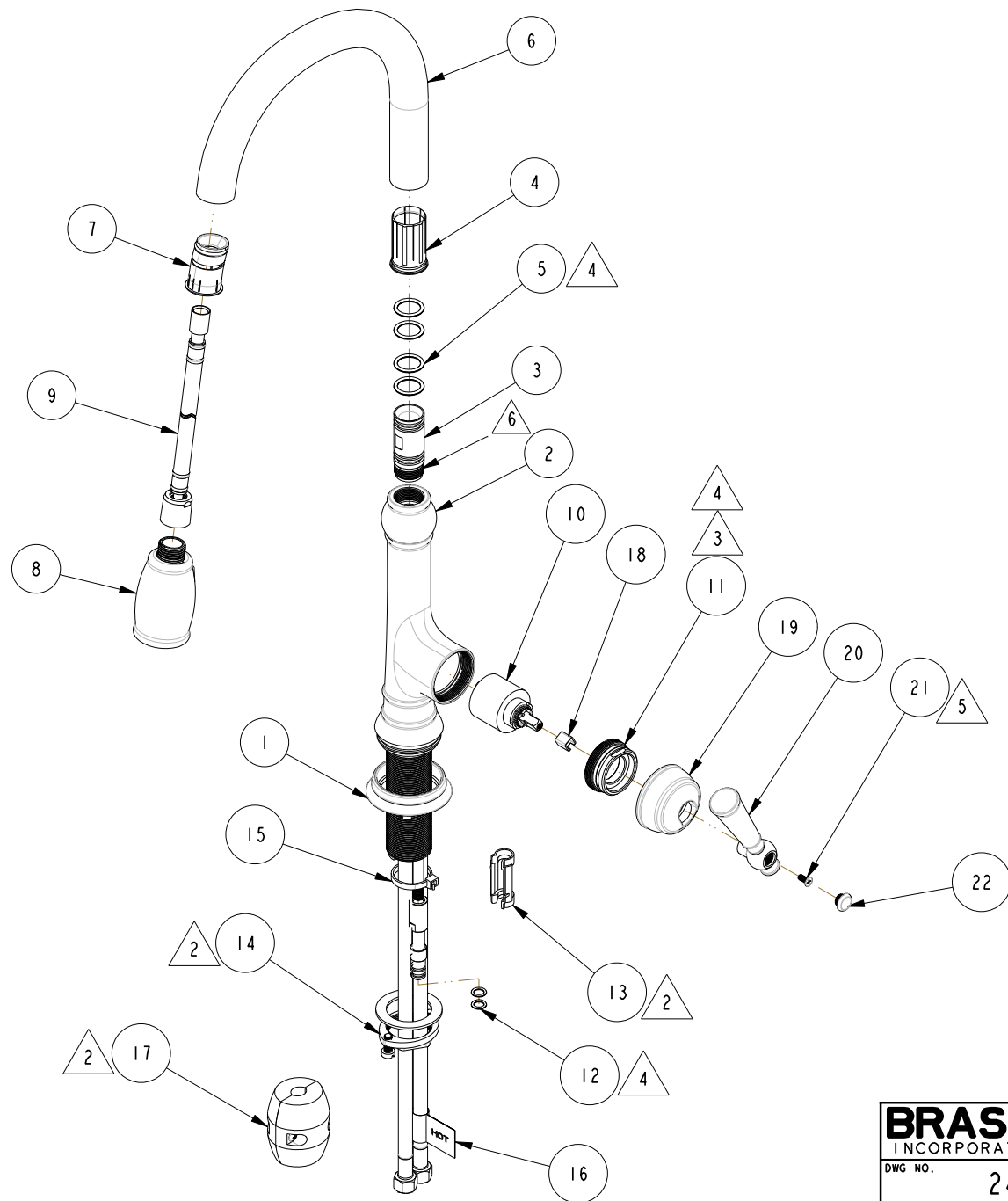
UNITS ARE: INCHES [MM]			
TOLERANCES ARE:			
FRACTIONS	DECIMALS	ANGLES	
±1/16"	.X ±.1 [2,5]	±1°	
	.XX ±.06 [1,5]		
(X.XXX) DENOTES CRITICAL DIMS.			
ALL THREADS ARE CRITICAL			
DRAWN	JINSON	01/30/18	
CHECKED	AN	01/30/18	
APPROVED	JM	01/30/18	

**BRASSTECH** 2001 CARNEGIE AVE.  
INCORPORATED SANTA ANA, CA 92705  
(949) 417-5207

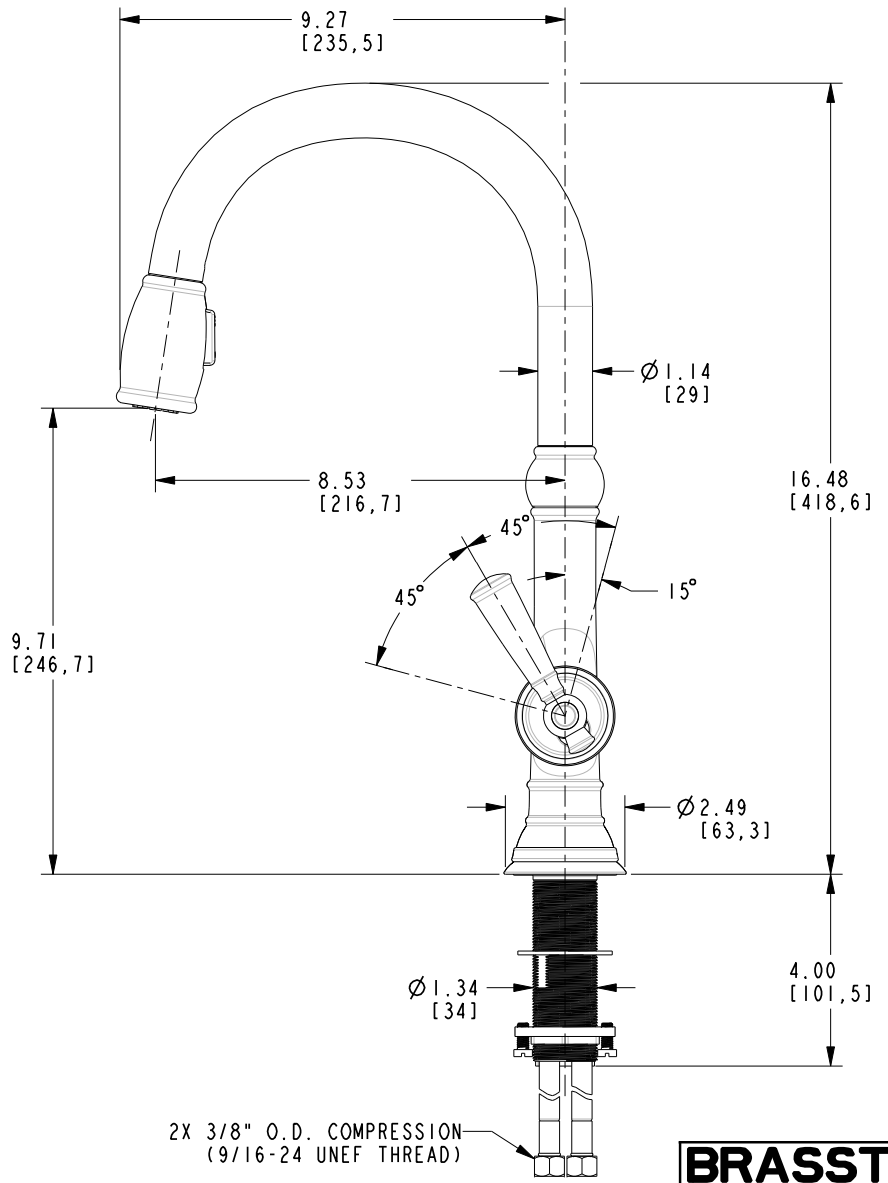
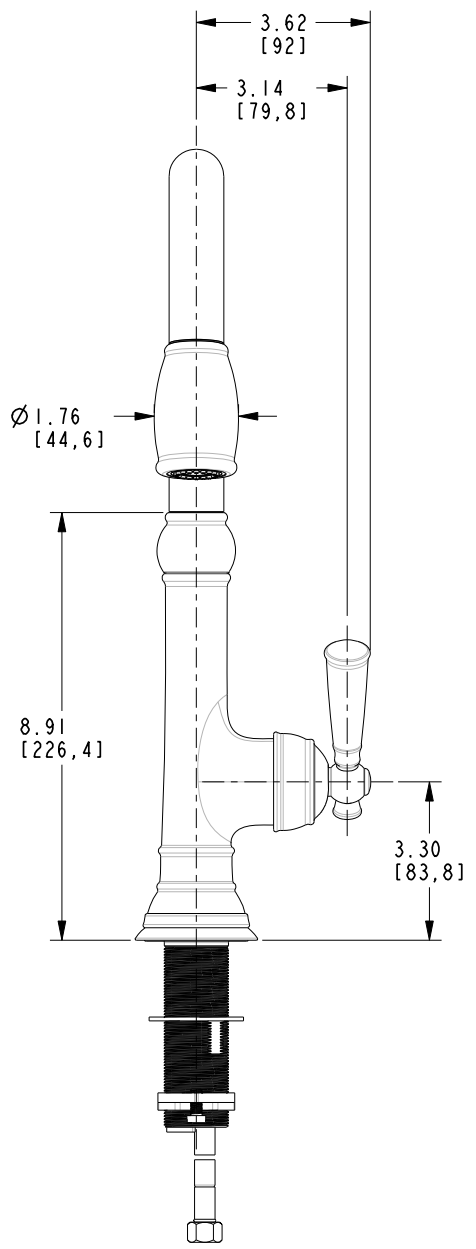
JACOBEAN PULL DOWN -  
KITCHEN FAUCET

DWG NO. 2470-5103 REV L

SCALE .250 REF. - SHEET 1 OF 3



<b>BRASSTECH</b>		2001 E. CARNEGIE AVE. SANTA ANA, CA 92705 (949) 417-5207
DWG NO.	2470-5103	REV L
SCALE .200	REF. -	SHEET 2 OF 3



2X 3/8" O.D. COMPRESSION  
(9/16-24 UNEF THREAD)

<b>BRASSTECH</b>		2001 E. CARNEGIE AVE. SANTA ANA, CA 92705 (949) 417-5207	
DWG NO.	2470-5103	REV	L
SCALE	.250	REF.	-
		SHEET	3 OF 3