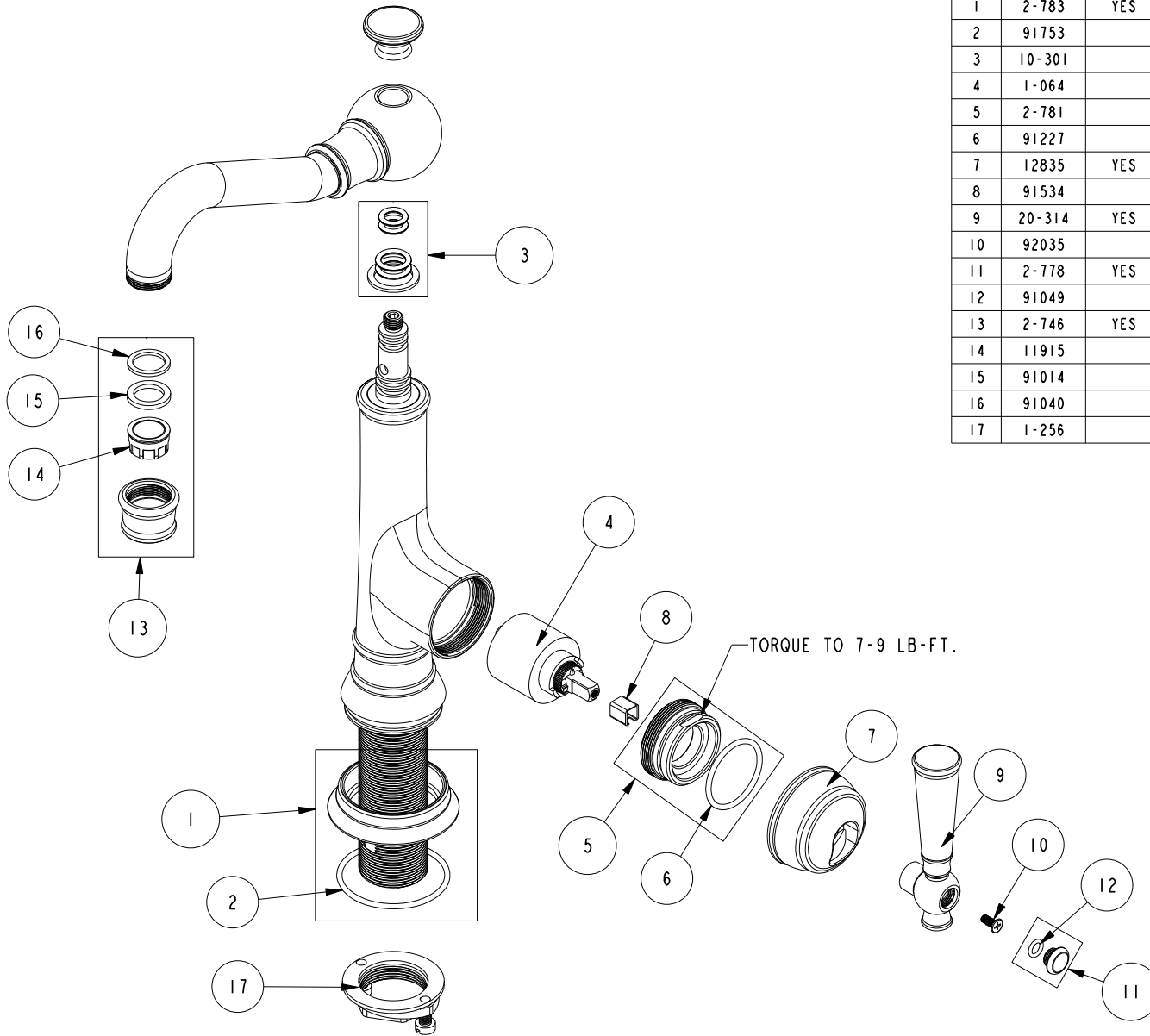


REPLACEMENT PARTS

NOTE:
USE SILICON GREASE (PART NUMBER 6727) TO LUBRICATE O-RINGS BEFORE INSTALL.

ITEM	PT/ASSY	SPECIFY FINISH	DESCRIPTION
1	2-783	YES	BASE RING ASM
2	91753		O-RING, # 2-136, EP, 50 DURO - GREY
3	10-301		SPOUT O-RING KIT
4	1-064		SINGLE LEVER CARTRIDGE
5	2-781		CART. RETAINER ASM
6	91227		O-RING, #2-125 EPDM
7	12835	YES	HANDLE HUB
8	91534		CARTRIDGE STEM INSERT
9	20-314	YES	HANDLE LEVER ASM
10	92035		SCRW, M4 X .7 X 10 PHL FLT HD SS
11	2-778	YES	CAP ASM
12	91049		O-RING, #2- 010, EPDM, 65-75 DURO, NSF 61
13	2-746	YES	AERATOR ASSEMBLY
14	11915		AERATOR INSERT STD, 1.8 GPM
15	91014		WSHR, .59 ID X .84 OD X .095 THK, FLT, RUBBER NSF 61
16	91040		WSHR, .590 ID X .825 OD X .072 THK, FLT, RUBBER NSF 61
17	1-256		MOUNTING KIT



JACOBAN SINGLE HOLE - BAR / PREP FAUCET
2470-5203

REV P EN-4765 01/12/24 APPROVED RS

NEWPORT BRASS.

t: 949.417.5207 | www.newportbrass.com