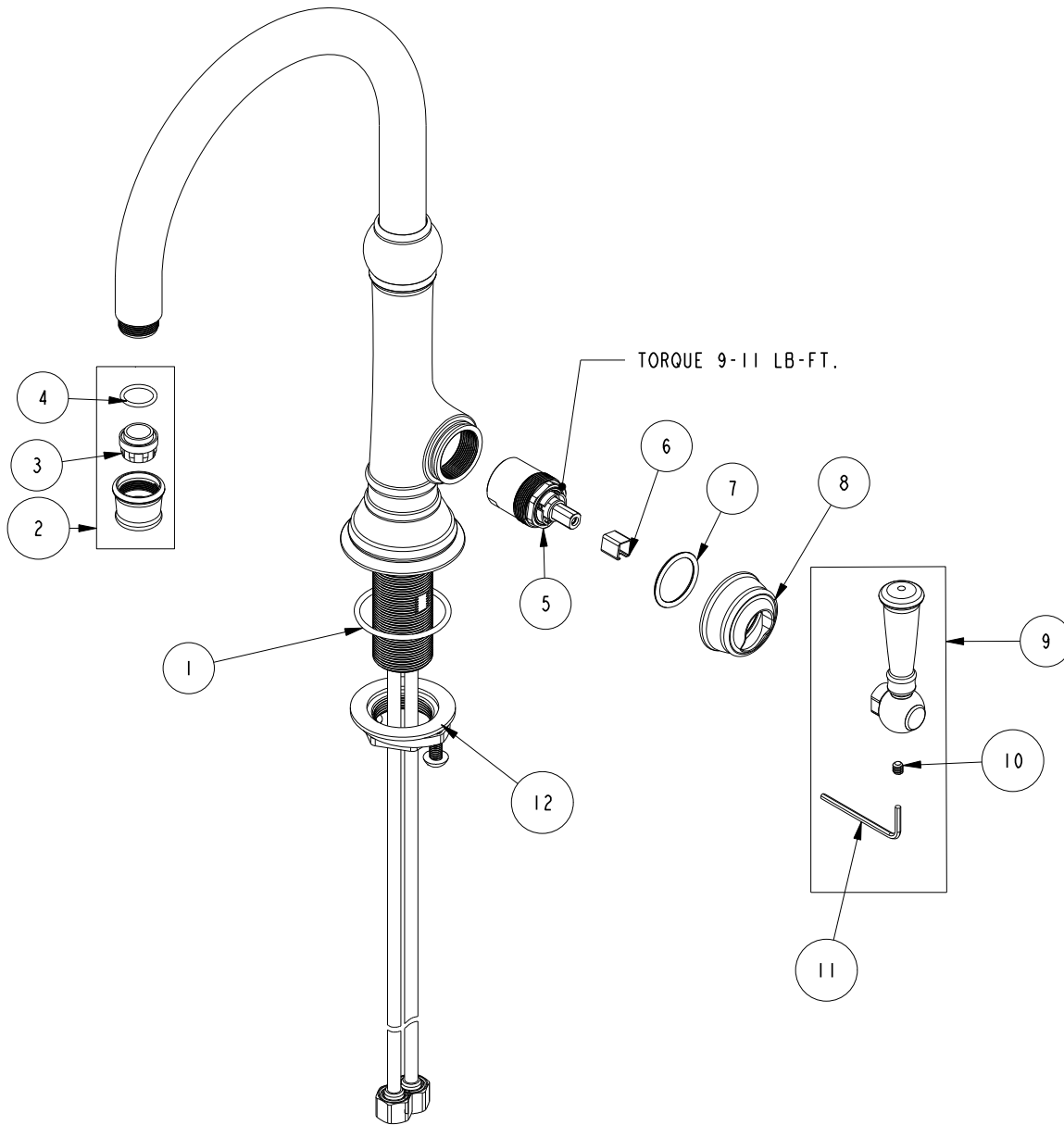


# REPLACEMENT PARTS



ITEM	PT/ASSY	SPECIFY FINISH	DESCRIPTION
1	91768		O-RING, #2-130, EP, 50 DURO - GREY
2	20-825	YES	AERATOR ASM
3	11916		AERATOR JR. INSERT-1.8 GPM
4	91079		O-RING, #2- 015, EPDM, 65-75 DURO, NSF 61
5	1-371		CARTRIDGE
6	91534		CARTRIDGE STEM INSERT
7	91288		O-RING, #2-119, EPDM, 65-75 DURO
8	30785		HANDLE BONNET
9	2-832	YES	LEVER ASM
10	92104		SCRW, 10-24 X 3/16 SKT HD CUP PT SS
11	10159		HEX KEY, 3/32 ALLOY STEEL
12	1-393		1-1/8 18 UNEF MOUNTING KIT

**SINGLE HOLE - BAR / PREP FAUCET**  
**2470-5233**

REV A EN-EN-5023 06/16/25

**NEWPORT BRASS.**

t: 949.417.5207 | www.newportbrass.com