

NOTES:

1. TO INSPECT ASSEMBLY, FOLLOW FIRST ARTICLE AND IN PROCESS INSPECTION SHEET.

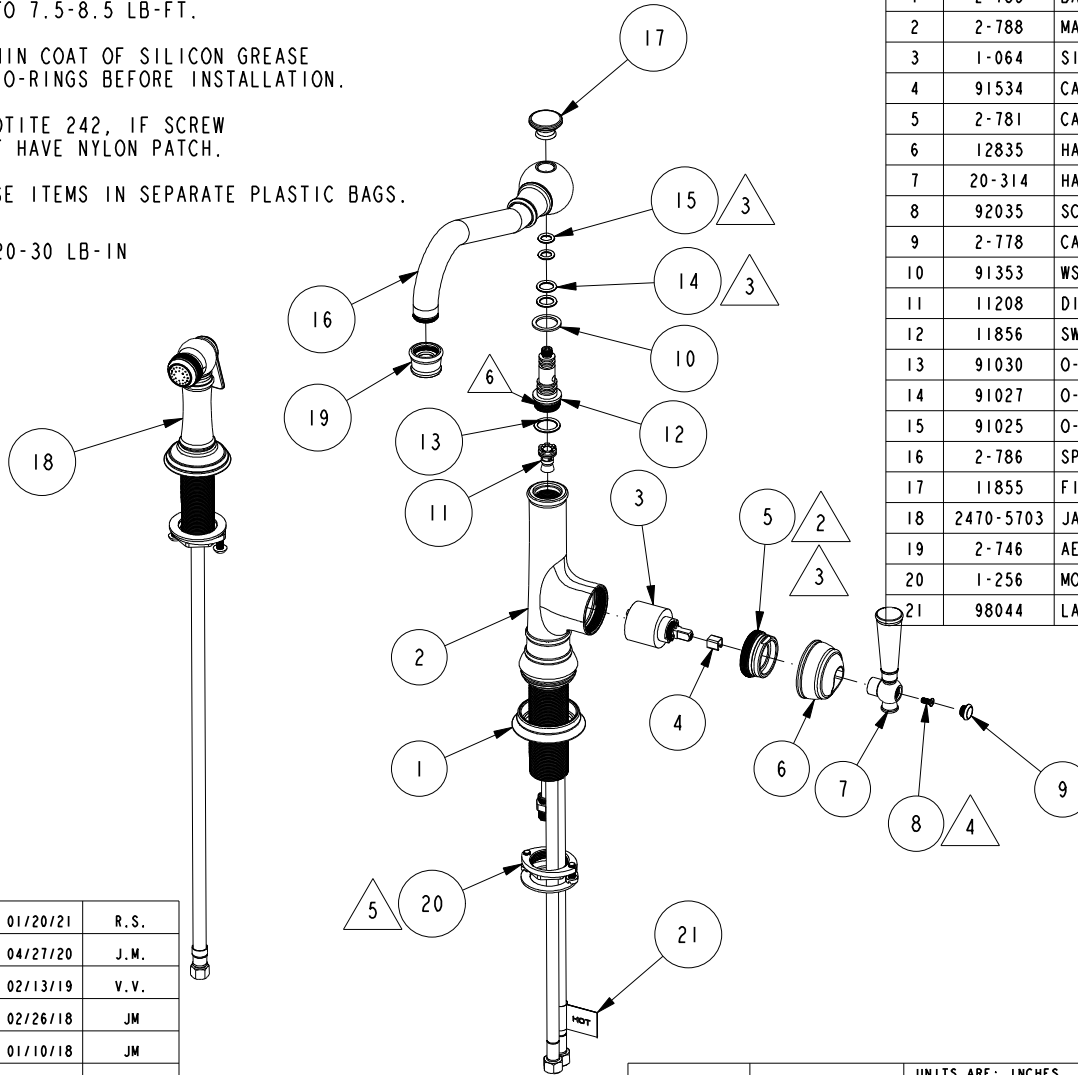
2. TORQUE TO 7.5-8.5 LB-FT.

3. APPLY THIN COAT OF SILICON GREASE FOR ALL O-RINGS BEFORE INSTALLATION.

4. APPLY LOTITE 242, IF SCREW DOES NOT HAVE NYLON PATCH.

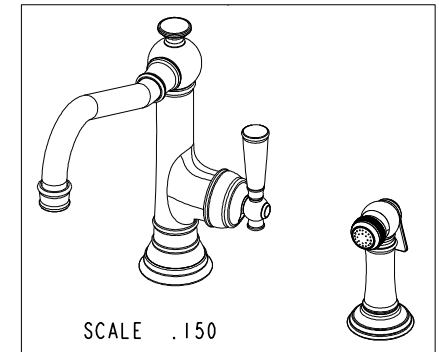
5. PUT THESE ITEMS IN SEPARATE PLASTIC BAGS.

6. TORQUE 20-30 LB-IN



BILL OF MATERIAL (CURRENT LEVEL)

ITEM	PT/ASSY	DESCRIPTION	TYPE	QTY.
1	2-783	BASE RING ASM	ASSEMBLY	1
2	2-788	MAIN BODY ASM , JACOBEAN	ASSEMBLY	1
3	1-064	SINGLE LEVER CARTRIDGE	PART	1
4	91534	CARTRIDGE STEM INSERT	PART	1
5	2-781	CART. RETAINER ASM	ASSEMBLY	1
6	12835	HANDLE HUB	PART	1
7	20-314	HANDLE LEVER ASM	ASSEMBLY	1
8	92035	SCRW, M4 X .7 X 10 PHL FLT HD SS	PART	1
9	2-778	CAP ASM	ASSEMBLY	1
10	91353	WSHR, .75 ID x 1.0 OD TEFLON	PART	1
11	11208	DIVERTER	ASSEMBLY	1
12	11856	SWIVEL ADAPTER	PART	1
13	91030	O-RING, #2- 115, EPDM, 65-75 DURO, NSF 61	PART	1
14	91027	O-RING, #2- 112, EPDM, 65-75 DURO, NSF 61	PART	2
15	91025	O-RING, #2- 110, EPDM, 65-75 DURO, NSF 61	PART	2
16	2-786	SPOUT ASM	ASSEMBLY	1
17	11855	FINIAL NUT	PART	1
18	2470-5703	JACOBEAN SIDE SPRAY	ASSEMBLY	1
19	2-746	AERATOR ASSEMBLY	ASSEMBLY	1
20	1-256	MOUNTING KIT	ASSEMBLY	1
21	98044	LABEL - HOT	PART	1



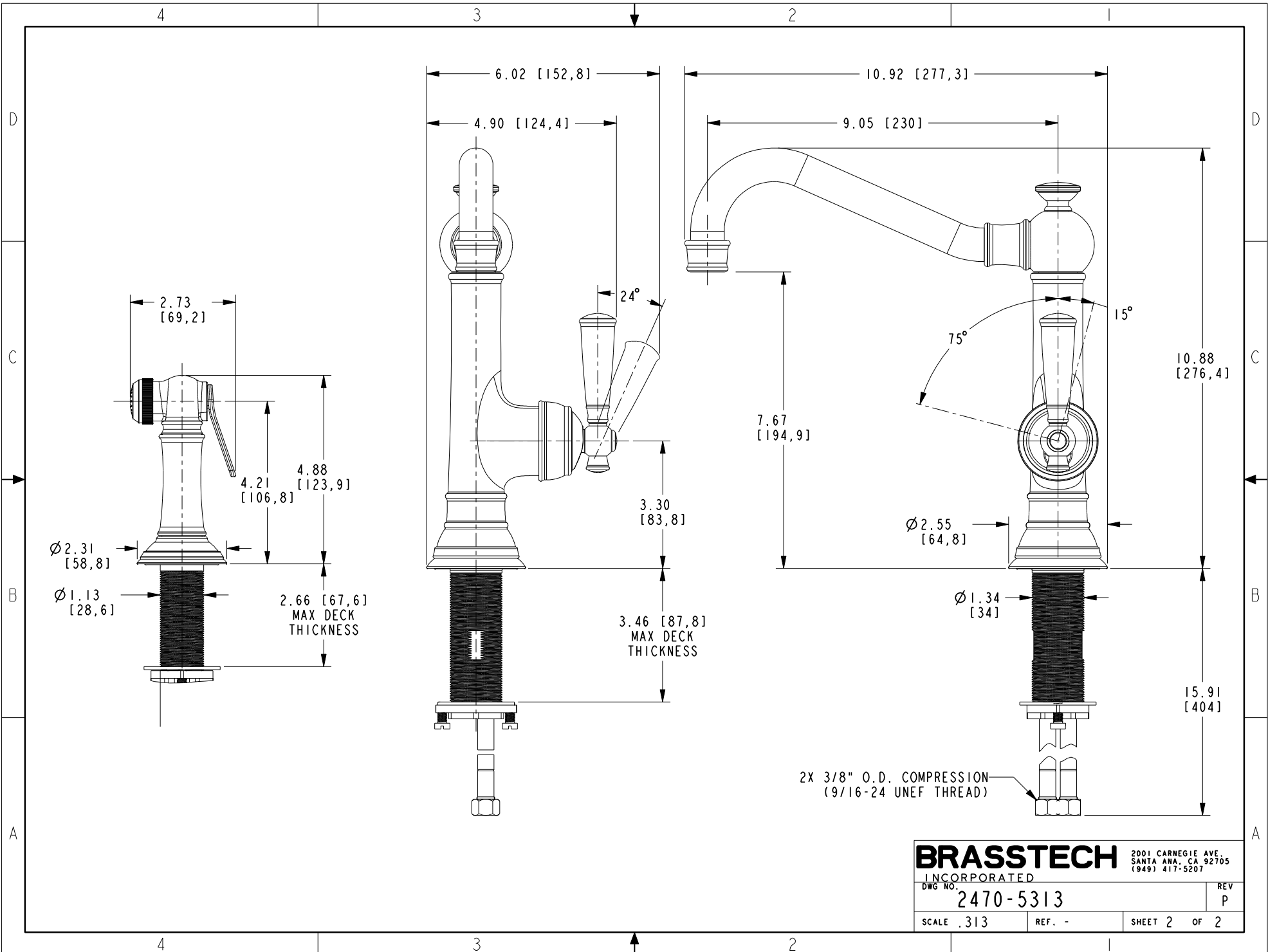
ZONE	REV	DESCRIPTION	DATE	APPROVED
-	P	EN-4300y	01/20/21	R. S.
-	N	EN-4162	04/27/20	J. M.
-	M	EN-3558b	02/13/19	V. V.
-	L	EN-3413f	02/26/18	JM
-	K	EN-3413d	01/10/18	JM
-	J	EN-2500	04/22/13	-
-	H	EN-2358a	02/12/13	-
-	G	EN-2358	11/15/12	-
-	F	EN-2211	07/06/12	-
-	E	EN-2181	06/11/12	-
-	D	EN-2140	04/30/12	-

COPYRIGHT 2005 BRASSTECH, INC. THESE DRAWINGS AND THE DESIGNS DEPICTED HEREIN ARE THE PROPRIETARY PROPERTY OF BRASSTECH. ANY USE OR REPRODUCTION IS SUBJECT TO THE EXPRESS APPROVAL OF BRASSTECH. UNAUTHORIZED USE IS STRICTLY PROHIBITED. ALL RIGHTS RESERVED.

TESTING	-	-	-
ASSEMBLY	-	-	-
PLATING	-	-	-
POLISHING	-	NEXT ASSY	USED ON
MACHINING	-	APPLICATION	
TOOLING FIXTURE #	REMOVE ALL BURRS AND SHARP EDGES		

UNITS ARE: INCHES [MM]	
TOLERANCES ARE:	
FRACTIONS	DECIMALS
±1/16"	±.005
.X ±.1	[2.5]
.XX ±.06	[1.5]
(X.XXX) DENOTES CRITICAL DIMS.	
ALL THREADS ARE CRITICAL	
DRAWN	JIMSON 01/31/18
CHECKED	A.N. 01/31/18
APPROVED	A.N. 01/31/18

BRASSTECH 2001 CARNEGIE AVE. SANTA ANA, CA 92705 (949) 417-5207
 INCORPORATED
JACOBEAN SINGLE HOLE - KITCHEN FAUCET
 DWG NO. 2470-5313 REV P
 SCALE .150 REF. - SHEET 1 OF 2



BRASSTECH
 INCORPORATED
 2001 CARNEGIE AVE.
 SANTA ANA, CA 92705
 (949) 417-5207

DWG NO.	2470-5313	REV	P
SCALE	.313	REF.	-
SHEET 2		OF 2	