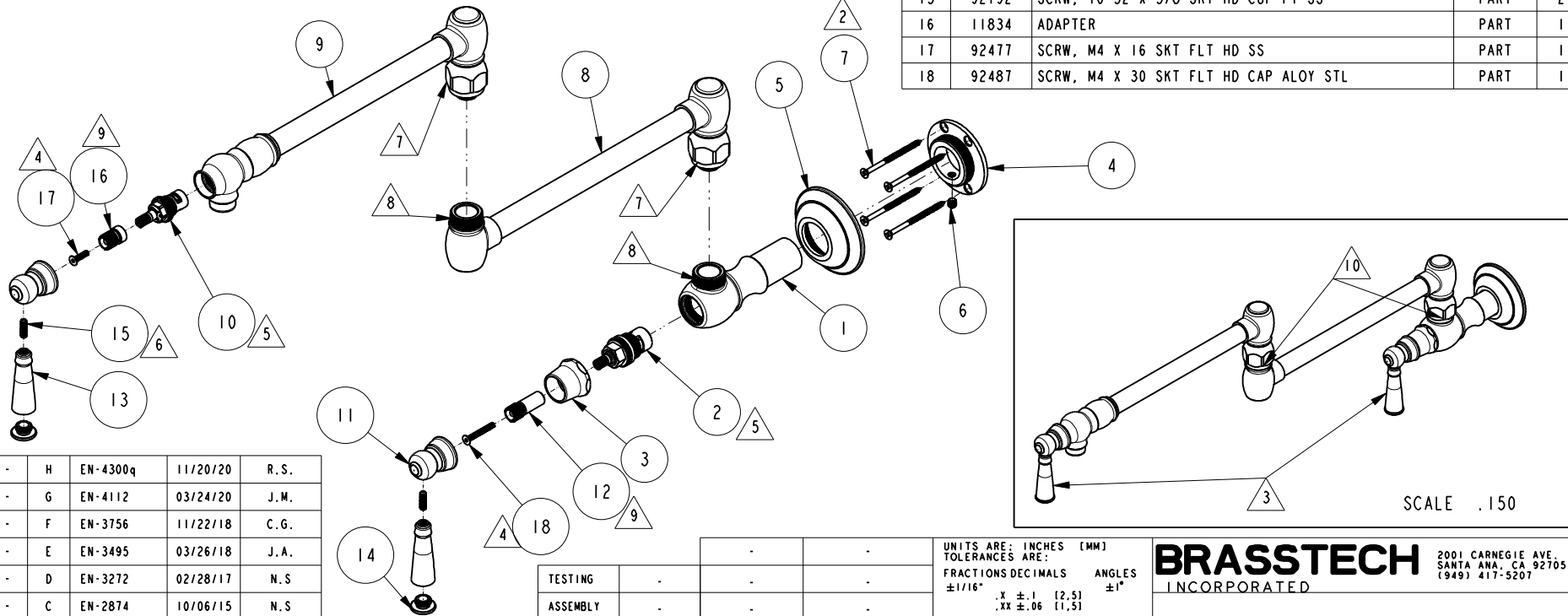


NOTES:

1. TO INSPECT ASSEMBLY, FOLLOW FIRST ARTICLE AND IN PROCESS INSPECTION SHEET.
2. PACK THESE ITEMS IN A PLASTIC BAG.
3. HANDLE IN CLOSE POSITION.
4. APPLY LOCTITE 680 ONLY AFTER ADJUSTING HANDLES IN THEIR OPTIMAL POSITION.
5. INSTALLATION TORQUE 11-14 LB-FT.
6. APPLY LOCTITE 242.
7. INSTALLATION TORQUE 6-9 LB-FT.
8. APPLY LOCTITE 680.
9. ADJUST THIS ITEM TO OPTIMIZE HANDLE POSITION.
10. SWIVEL CONNECTION SHALL NOT HAVE NOTICEABLE WOBBLINESS AFTER ASSEMBLY.

BILL OF MATERIAL (CURRENT LEVEL)

ITEM	PT/ASSY	DESCRIPTION	TYPE	QTY.
1	11299	VALVE BODY, WALL-END	PART	1
2	1-326	W/S CARTRIDGE FRICTION - HOT	PART	1
3	12095	BONNET	PART	1
4	11301	FLANGE, MOUNTING	PART	1
5	2-555	FLANGE ASM, TRAD	ASSEMBLY	1
6	92231	SCRW, 1/4-20 X 1/4 SKT HD CUP PT SS	PART	1
7	92223	SCRW, #8 X 2-1/2 PHL FLT HD SS	PART	4
8	2-550	LOWER ARM ASM, TRAD	ASSEMBLY	1
9	2-549	UPPER ARM ASM, TRAD	ASSEMBLY	1
10	1-437	CARTR 3/8 HOT 1/4 TR	PART	1
11	12747	BODY HANDLE	PART	2
12	11835	ADAPTER	PART	1
13	12110	LEVER, HANDLE	PART	2
14	12111	CAP, LEVER, HANDLE	PART	2
15	92192	SCRW, 10-32 X 5/8 SKT HD CUP PT SS	PART	2
16	11834	ADAPTER	PART	1
17	92477	SCRW, M4 X 16 SKT FLT HD SS	PART	1
18	92487	SCRW, M4 X 30 SKT FLT HD CAP ALLOY STL	PART	1



-	H	EN-4300q	11/20/20	R.S.
-	G	EN-4112	03/24/20	J.M.
-	F	EN-3756	11/22/18	C.G.
-	E	EN-3495	03/26/18	J.A.
-	D	EN-3272	02/28/17	N.S.
-	C	EN-2874	10/06/15	N.S.
-	B	EN-2205	08/03/12	-
-	A	EN-2085	03/05/12	-
-	-	EN-1552-4	02/01/11	-
ZONE	REV	DESCRIPTION	DATE	APPROVED

COPYRIGHT 2005 BRASSTECH, INC. THESE DRAWINGS AND THE DESIGNS DEPICTED HEREIN ARE THE PROPRIETARY PROPERTY OF BRASSTECH. ANY USE OR REPRODUCTION IS SUBJECT TO THE EXPRESS APPROVAL OF BRASSTECH. UNAUTHORIZED USE IS STRICTLY PROHIBITED. ALL RIGHTS RESERVED.

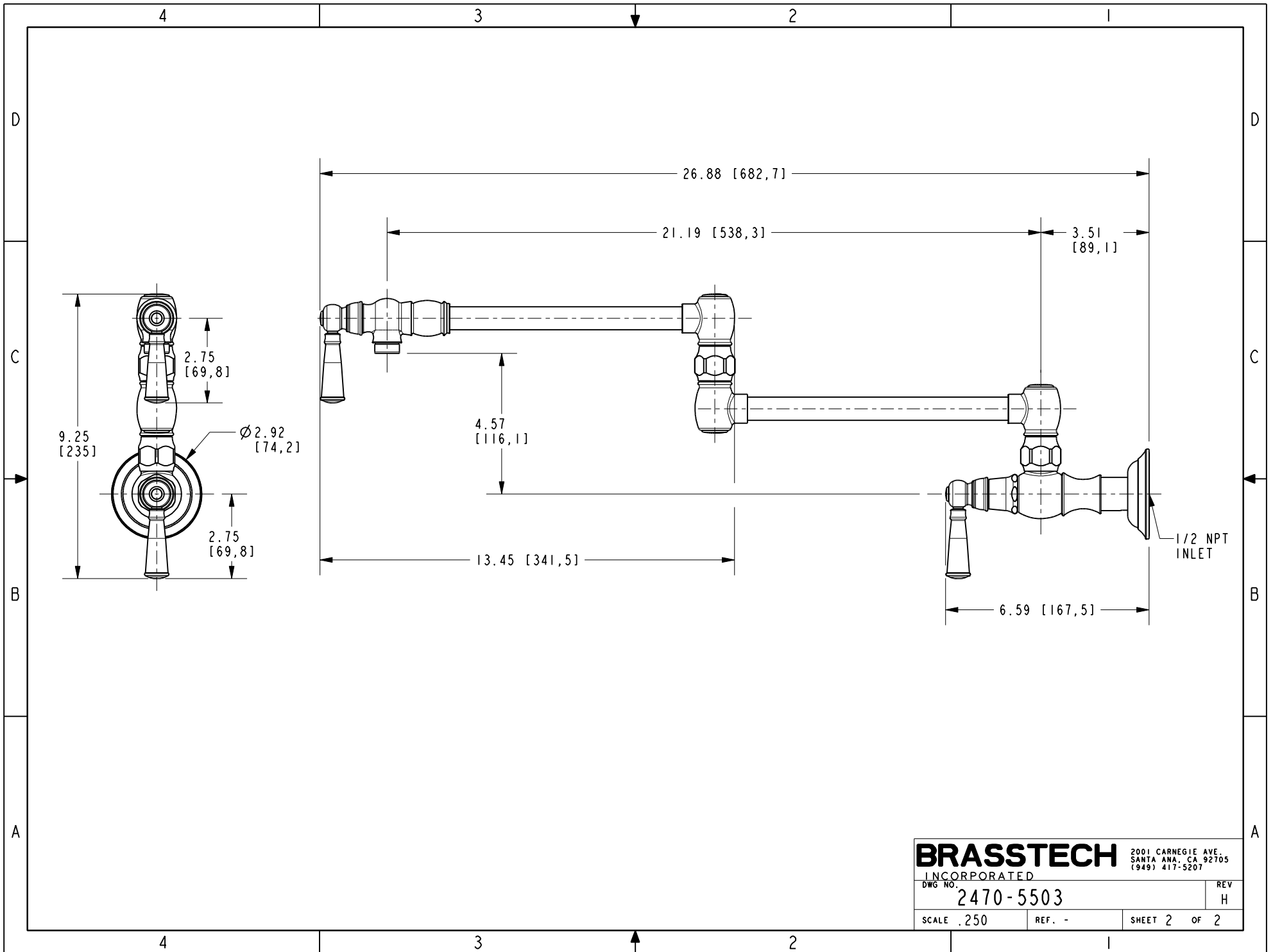
TESTING	-	-	-
ASSEMBLY	-	-	-
PLATING	-	-	-
POLISHING	-	NEXT ASSY	USED ON
MACHINING	-	APPLICATION	
TOOLING FIXTURE #	REMOVE ALL BURRS AND SHARP EDGES		

UNITS ARE: INCHES [MM]		
TOLERANCES ARE:		
FRACTIONS DECIMALS	ANGLES	
±1/16"	.X ±.1 [2.5]	±1°
	.XX ±.06 [1.5]	
(X.XXX) DENOTES CRITICAL DIMS. ALL THREADS ARE CRITICAL		
DRAWN	JINSON	11/20/20
CHECKED	R.S.	11/20/20
APPROVED	R.S.	11/20/20

BRASSTECH 2001 CARNEGIE AVE.
INCORPORATED SANTA ANA, CA 92705
(949) 417-5207

WALL MOUNT POT-FILLER

DWG NO.	2470-5503	REV	H
SCALE	.200	REF.	-
SHEET	1	OF	2



BRASSTECH		2001 CARNEGIE AVE. SANTA ANA, CA 92705 (949) 417-5207
INCORPORATED		
DWG NO.	2470-5503	REV H
SCALE .250	REF. -	SHEET 2 OF 2