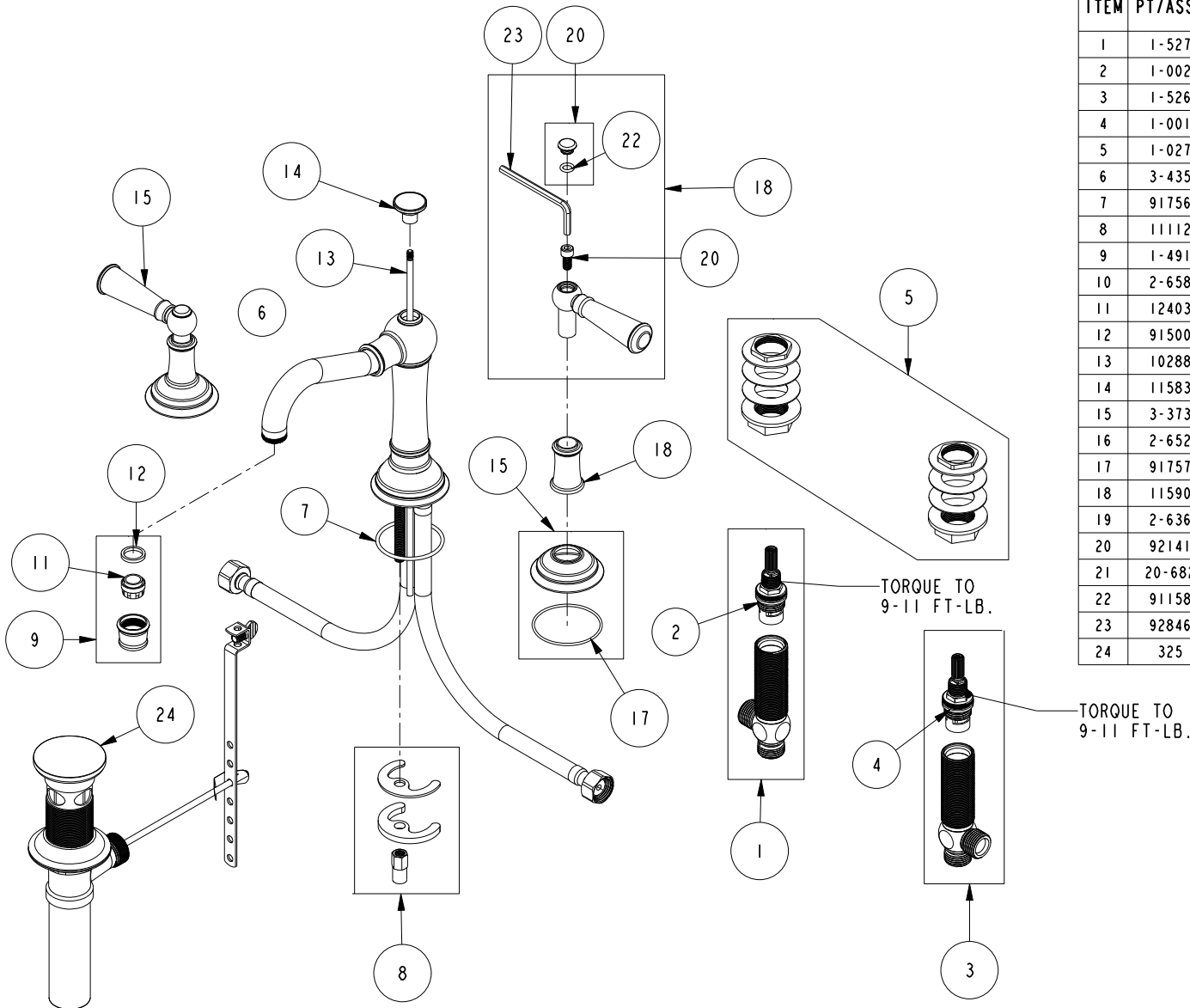


# REPLACEMENT PARTS



ITEM	PT/ASSY	SPECIFY FINISH	DESCRIPTION
1	1-527		W/S CART/BODY ASM (HOT)
2	1-002		W/S CARTRIDGE - HOT
3	1-526		W/S CART/BODY ASM (COLD)
4	1-001		W/S CARTRIDGE - COLD
5	1-027		WIDE SPREAD MOUNTING HARDWARE
6	3-435	YES	SPOUT ASM WITH ESCUTCHEON
7	91756		O-RING #2-134, EP, 50 DURO - GREY
8	11112		TUB SPOUT 3/4 X 4 3/4"
9	1-491		SPOUT MOUNTING KIT
10	2-658	YES	AERATOR ASM
11	12403		AERATOR INSERT, Jr. SIZE, 1.2 GPM
12	91500		GSKT, .578 ID X .728 OD X .102 THK EPDM
13	10288	YES	3/16" POP UP ROD
14	11583	YES	POP-UP KNOB
15	3-373	YES	LEVER HANDLE AND ESC. ASM
16	2-652	YES	HANDLE ESCUTCHEON ASM
17	91757		O-RING, #2-033, EPDM, 50 DURO
18	11590	YES	HANDLE BONNET
19	2-636	YES	LEVER HANDLE ASSEMBLY
20	92141		SCREW, CAP HD 1/4-20 X 1/2
21	20-682	YES	HANDLE CAP ASM
22	91158		O-RING, 2 X 7MM ID, EPDM, 65-75 DURO
23	92846		HEX KEY, 3/16" ALLOY STEEL
24	325	YES	POP UP ASSEMBLY

W/S LAVATORY FAUCET  
2470

REV F EN-4728 11/06/23 APPROVED RS

**NEWPORT BRASS.**

t: 949.417.5207 | www.newportbrass.com