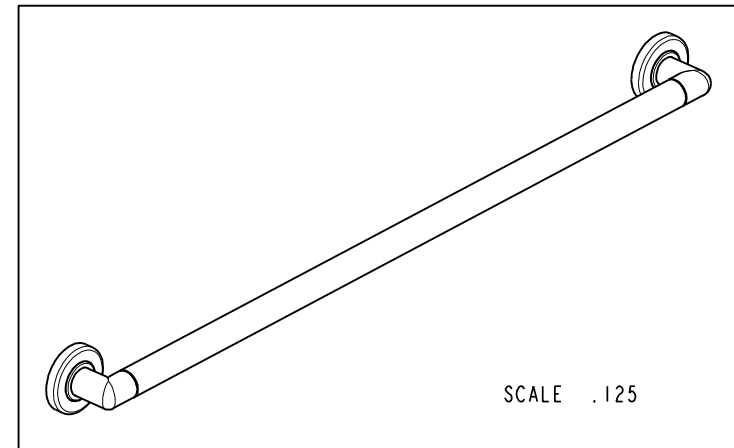
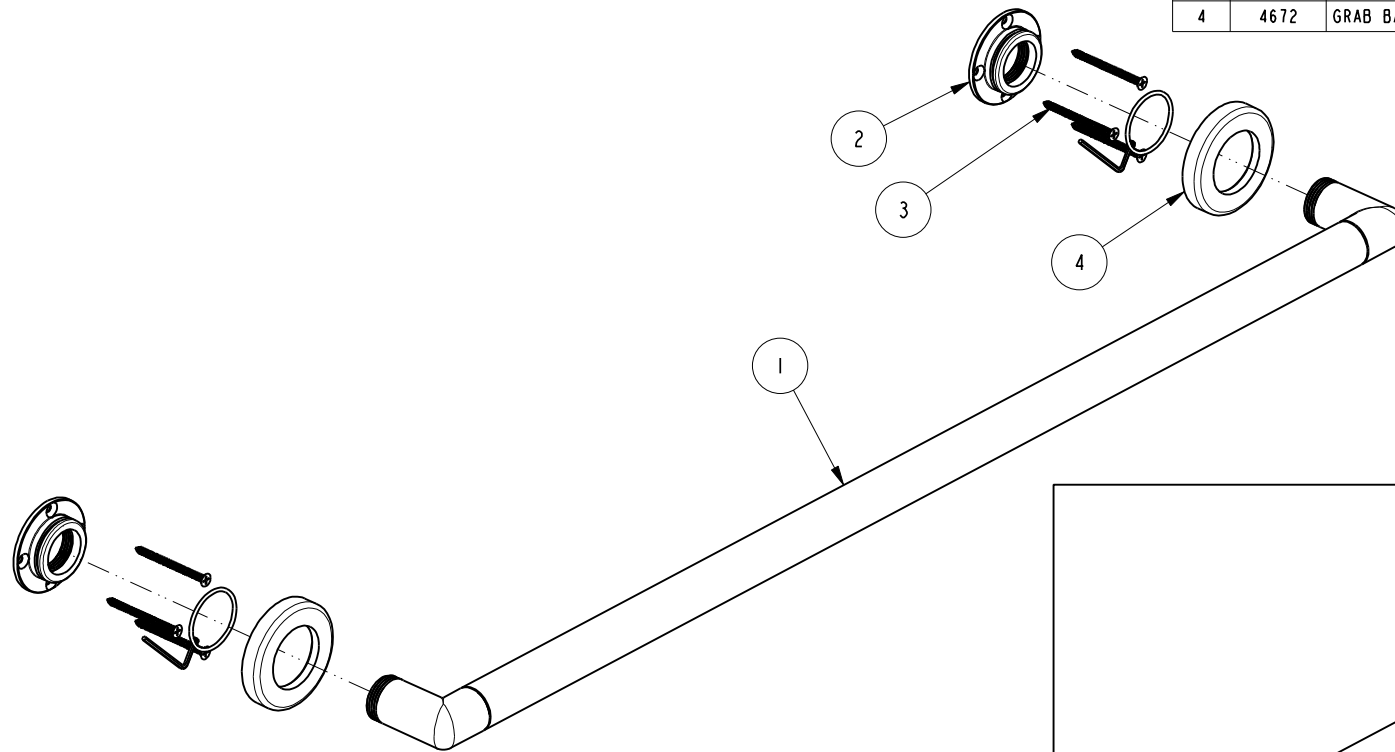


NOTES:

1. TO INSPECT ASSEMBLY, FOLLOW FIRST ARTICLE AND IN PROCESS INSPECTION SHEET.

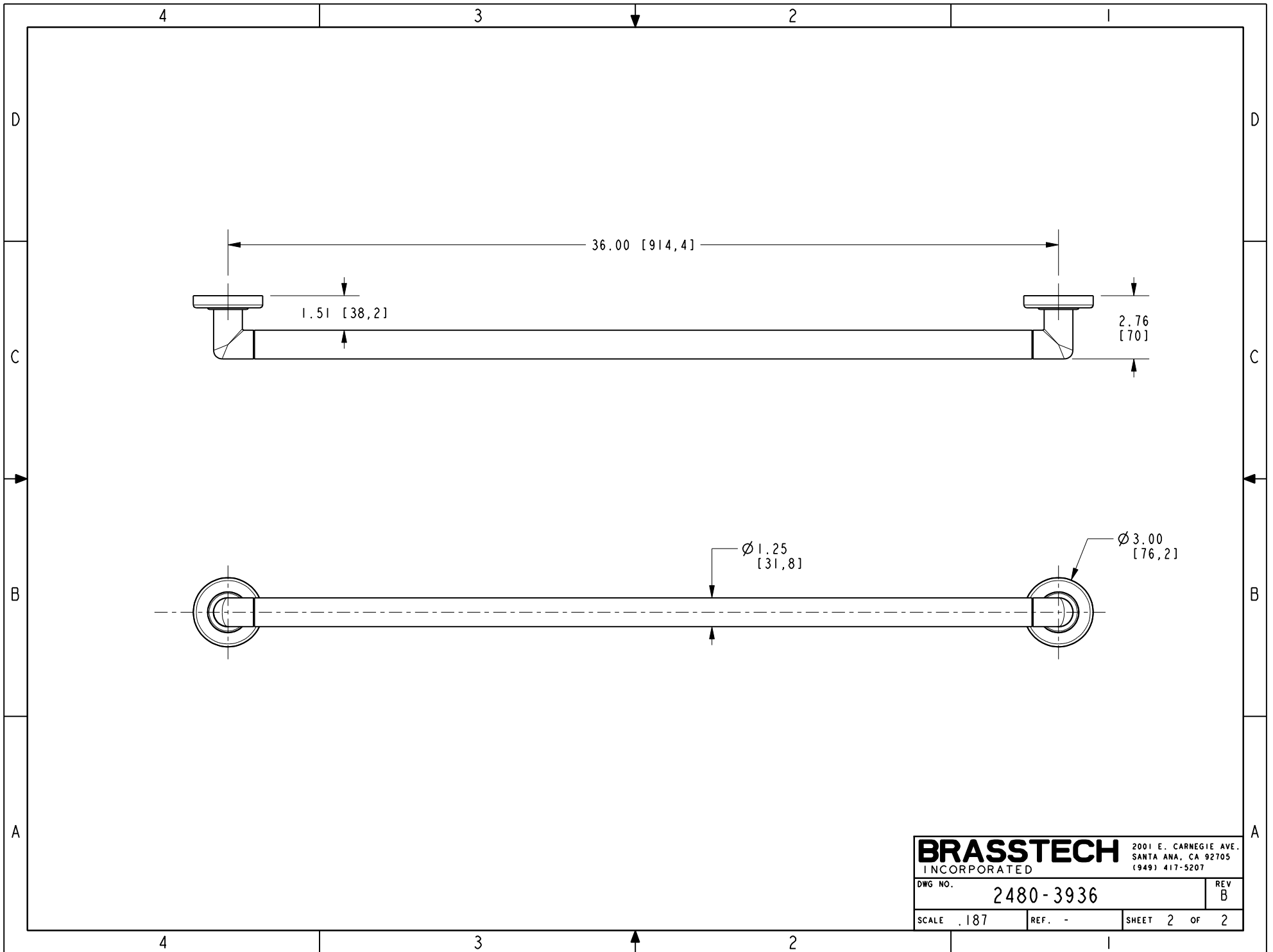
**BILL OF MATERIAL (CURRENT LEVEL)**

ITEM	PT/ASSY	DESCRIPTION	TYPE	QTY.
1	5085SO	36" GRAB BAR BRAZE ASM	ASSEMBLY	1
2	1995	MOUNTING FLANGE	PART	2
3	199X	GRAB BAR MOUNTING HARDWARE PACK	ASSEMBLY	2
4	4672	GRAB BAR ROSETTE	PART	2



					TESTING		-	-	-	UNITS ARE: INCHES [MM] TOLERANCES ARE: FRACTIONS DECIMALS ANGLES ±1/16" .X ±.1 [2,5] ±1° .XX ±.06 [1,5] (X.XXX) DENOTES CRITICAL DIMS. ALL THREADS ARE CRITICAL	<b>BRASSTECH</b> 2001 CARNEGIE AVE. INCORPORATED SANTA ANA, CA 92705 (949) 417-5207	
					ASSEMBLY		-	-	-			
					PLATING		-	-	-			
					POLISHING		-	NEXT ASSY	USED ON			
					MACHINING		-	APPLICATION				
					TOOLING FIXTURE #		REMOVE ALL BURRS AND SHARP EDGES			DRAWN JINSON 06/22/21 CHECKED R.S. 06/22/21 APPROVED R.S. 06/22/21	DWG NO. <b>2480-3936</b> REV B	
ZONE	REV	DESCRIPTION	DATE	APPROVED						SCALE .200	REF. -	SHEET 1 OF 2

COPYRIGHT 2005 BRASSTECH, INC. THESE DRAWINGS AND THE DESIGNS DEPICTED HEREIN ARE THE PROPRIETARY PROPERTY OF BRASSTECH. ANY USE OR REPRODUCTION IS SUBJECT TO THE EXPRESS APPROVAL OF BRASSTECH. UNAUTHORIZED USE IS STRICTLY PROHIBITED. ALL RIGHTS RESERVED.



<b>BRASSTECH</b>		2001 E. CARNEGIE AVE. SANTA ANA, CA 92705 (949) 417-5207
DWG NO.	2480-3936	REV B
SCALE .187	REF. -	SHEET 2 OF 2