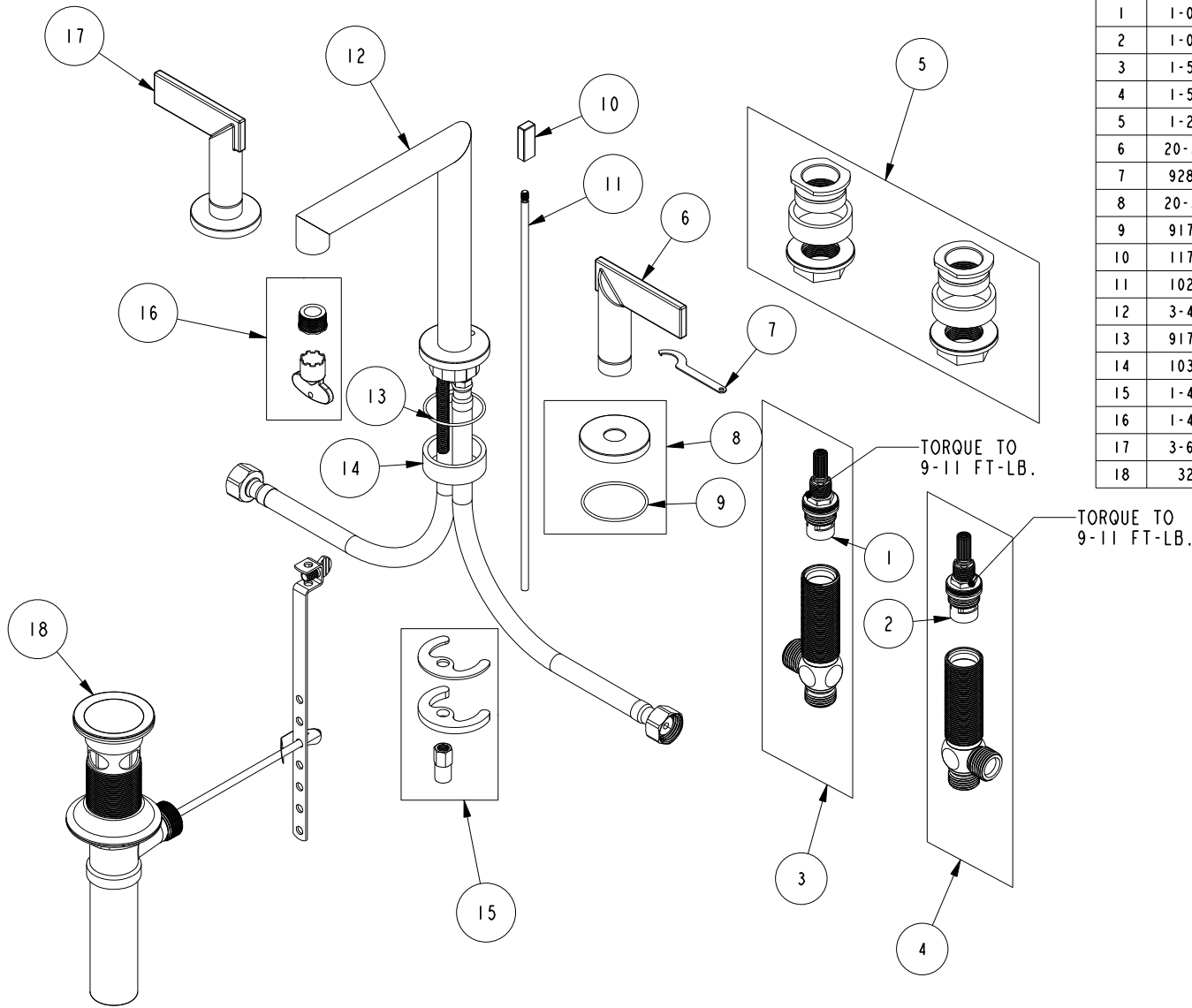


# REPLACEMENT PARTS



ITEM	PT/ASSY	SPECIFY FINISH	DESCRIPTION
1	1-001		W/S CARTRIDGE - COLD
2	1-002		W/S CARTRIDGE - HOT
3	1-526		W/S CART/BODY ASM (COLD)
4	1-527		W/S CART/BODY ASM (HOT)
5	1-226		WIDESPREAD MOUNTING HARDWARE
6	20-300	YES	LEVER ASM
7	92870		LEVER WRENCH
8	20-301	YES	ROUND HANDLE ESCUTCHEON ASM
9	91759		O-RING, #2-030, 50 DURO
10	11738	YES	POP UP KNOB
11	10288	YES	3/16" POP UP ROD
12	3-402	YES	W/S - MITER SPOUT ASM
13	91766		O-RING, #2-029, 50 DURO
14	10382		QUICK CONNECT SPACER
15	1-491		SPOUT MOUNTING KIT
16	1-492		AERATOR 1.2 GPM WITH KEY
17	3-608	YES	LEVER HADNLE
18	325	YES	POP UP ASSEMBLY

W/S MITER DECK LAVATORY SET  
2490

**NEWPORT BRASS.**