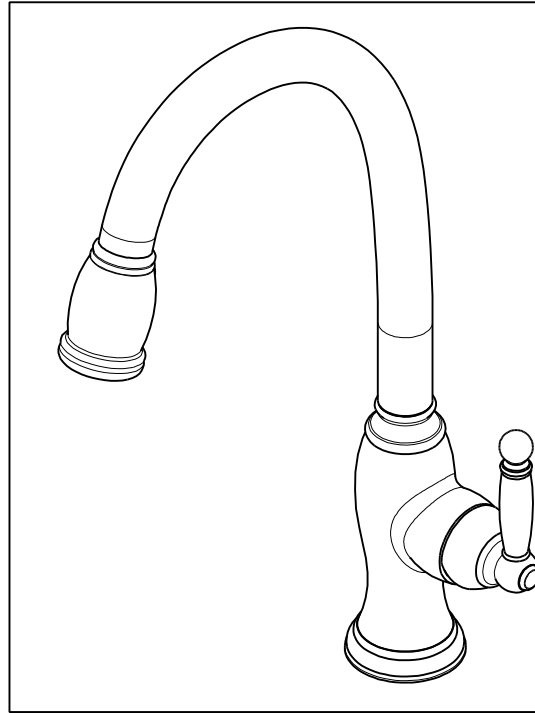


NOTES:

1. TO INSPECT ASSEMBLY, FOLLOW FIRST ARTICLE AND IN PROCESS INSPECTION SHEET.
2. PUT THESE ITEMS IN SEPARATE PLASTIC BAGS.
3. TORQUE TO 8 +/-0.5 LB-FT.
4. APPLY THIN COAT OF SILICON GREASE FOR ALL O-RINGS BEFORE INSTALLATION.
5. APPLY LOCTITE 242, IF SCREW DOES NOT HAVE NYLON PATCH.
6. APPLY LOCTITE 680.
7. PULL OUT HOSE AND APPLY SILICON GREASE, BETWEEN HOUSE AND SPOUT, 10" FROM OUTLET TO HOSE.
8. TORQUE SWIVEL NUT TO 19 +/-2 LB-IN.
9. TORQUE TO 10 +/-2 LB-FT.
10. TORQUE TO 7 +/-2 LB-IN.
11. PARTIALLY THREAD MOUNTING KIT ONTO SHANK.
12. DO NOT DOCK SPRAY HEAD TO SPOUT WHEN PACKAGING.
13. PLACE ZIP TIE 2" FROM BOTTOM OF SHANK.



BILL OF MATERIAL (CURRENT LEVEL)

ITEM	PT/ASSY	DESCRIPTION	TYPE	QTY.
1	2-779	MAIN BODY ASM, NADYA	ASSEMBLY	1
2	1-064	SINGLE LEVER CARTRIDGE	PART	1
3	13465	SPOUT ADAPTER	PART	1
4	11714	CARTRIDGE RETAINER	PART	1
5	11715	CARTRIDGE CAP	PART	1
6	2-745	HANDLE ASM, TRAD	ASSEMBLY	1
7	2-778	CAP ASM	ASSEMBLY	1
8	92035	SCRW, M4 X .7 X 10 PHL FLT HD SS	PART	1
9	91534	CARTRIDGE STEM INSERT	PART	1
10	91030	O-RING, #2- 115, EPDM, 65-75 DURO, NSF 61	PART	4
11	91712	SLEEVE	PART	1
12	12492	SPOUT	PART	1
13	91544	MAGNET DOCKING	ASSEMBLY	1
14	3-415	SPRAY HEAD, TRADITIONAL	ASSEMBLY	1
15	11877	HOSE, PULLDOWN SWIVEL	ASSEMBLY	1
16	2-777	BASE RING ASM	ASSEMBLY	1
17	91568	RETAINER CLIP	PART	1
18	1-256	MOUNTING KIT	ASSEMBLY	1
19	91255	O-RING, #2- 011, EPDM, 65-75 DURO, NSF-61	PART	2
20	91341	ZIP TIE	PART	1
21	98044	LABEL - HOT	PART	1
22	1-286	WEIGHT ASM	ASSEMBLY	1
23	13464	ADAPTER EXTENSION	PART	1
24	91114	O-RING, #2- 116, EPDM, 65-75 DURO, NSF 61	PART	2

REV	DESCRIPTION	DATE	APPROVED
-	M	EN-4300s	03/29/21 R.S.
-	L	EN-4200A	09/24/20 C.G.
-	K	EN-4167	06/12/20 JMR
-	J	EN-3931B	09/16/19 V.V.
-	H	EN-3034L	09/11/17 J.A
-	G	EN-3034	04/07/17 J.A
-	F	EN-2500	04/22/13 -
-	E	EN-2443o	04/18/13 -
-	D	EN-2293	10/02/12 -
-	C	EN-2211	07/06/12 -
-	B	EN-2181	06/11/12 -
-	A	EN-1552-4A	09/08/11 -

COPYRIGHT 2005 BRASSTECH, INC. THESE DRAWINGS AND THE DESIGNS DEPICTED HEREIN ARE THE PROPRIETARY PROPERTY OF BRASSTECH. ANY USE OR REPRODUCTION IS SUBJECT TO THE EXPRESS APPROVAL OF BRASSTECH. UNAUTHORIZED USE IS STRICTLY PROHIBITED. ALL RIGHTS RESERVED.

TESTING	-	-	-
ASSEMBLY	-	-	-
PLATING	-	-	-
POLISHING	-	NEXT ASSY	USED ON
MACHINING	-	APPLICATION	
TOOLING FIXTURE #	REMOVE ALL BURRS AND SHARP EDGES		

UNITS ARE: INCHES [MM]  
TOLERANCES ARE:  
FRACTIONS DECIMALS ANGLES  
±1/16" .X ±.1 [2.5] ±1°  
.XX ±.06 [1.5]

(X.XXX) DENOTES CRITICAL DIMS.  
ALL THREADS ARE CRITICAL

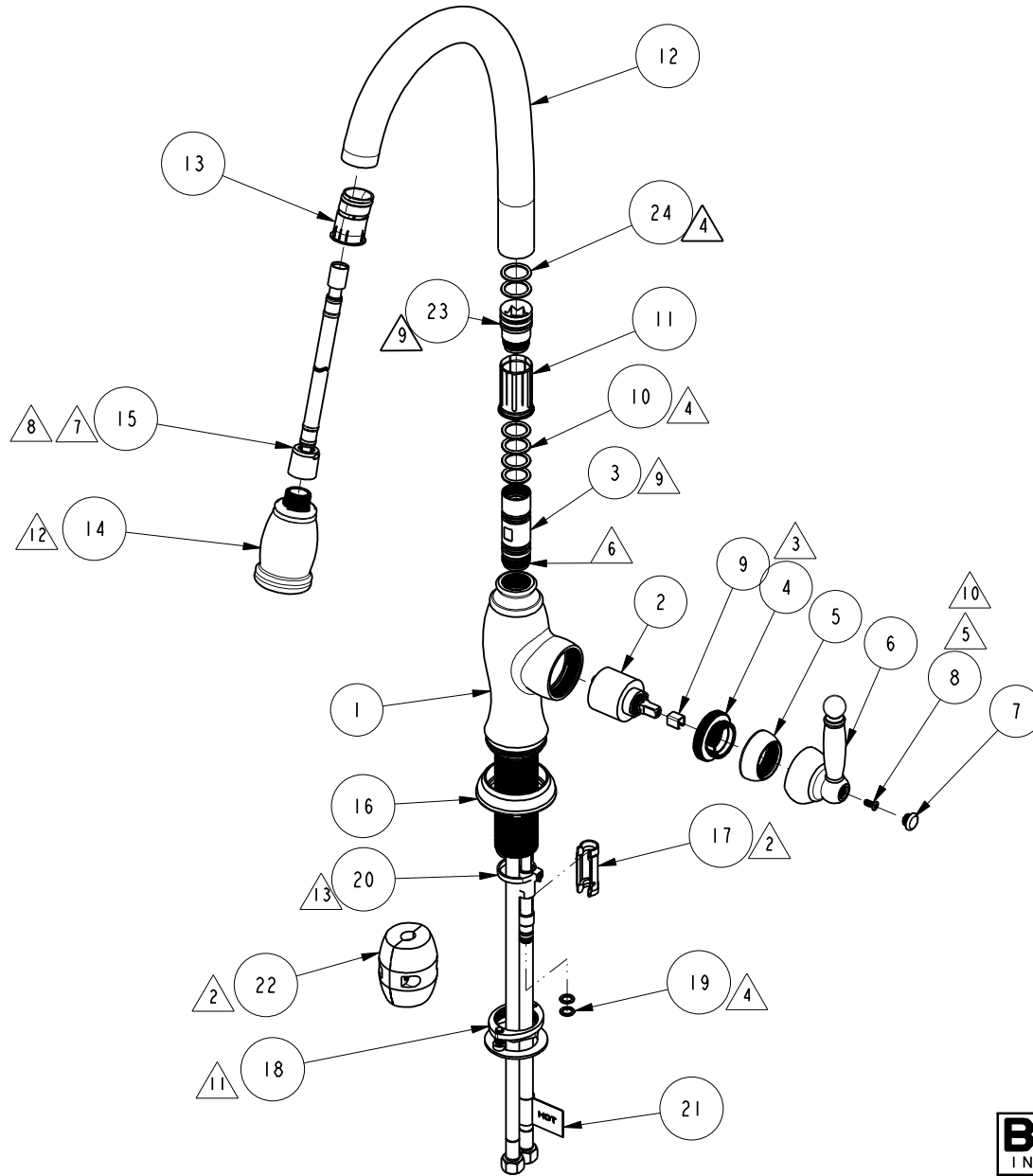
DRAWN	JINSON	03/29/21
CHECKED	R.S.	03/29/21
APPROVED	R.S.	03/29/21

**BRASSTECH** INCORPORATED  
2001 CARNEGIE AVE.  
SANTA ANA, CA 92705  
(949) 417-5207

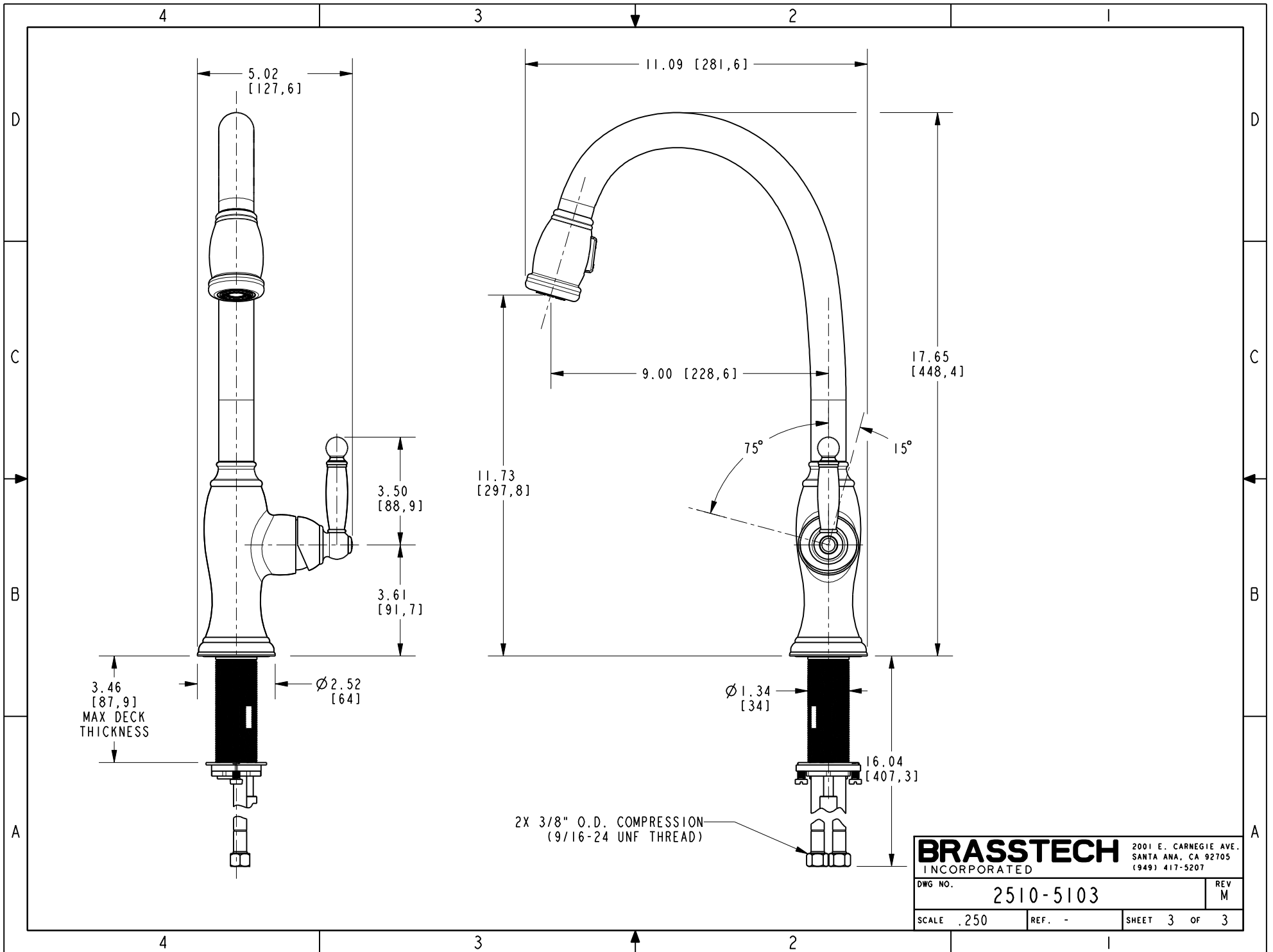
NADYA PULL DOWN -  
KITCHEN FAUCET

DWG NO. 2510-5103 REV M

SCALE .250 REF. - SHEET 1 OF 3



<b>BRASSTECH</b>		2001 E. CARNEGIE AVE. SANTA ANA, CA 92705 (949) 417-5207
DWG NO.	2510-5103	REV M
SCALE .175	REF. -	SHEET 2 OF 3



<b>BRASSTECH</b>		2001 E. CARNEGIE AVE. SANTA ANA, CA 92705 (949) 417-5207	
DWG NO.	2510-5103	REV	M
SCALE	.250	REF.	-
SHEET 3		OF 3	