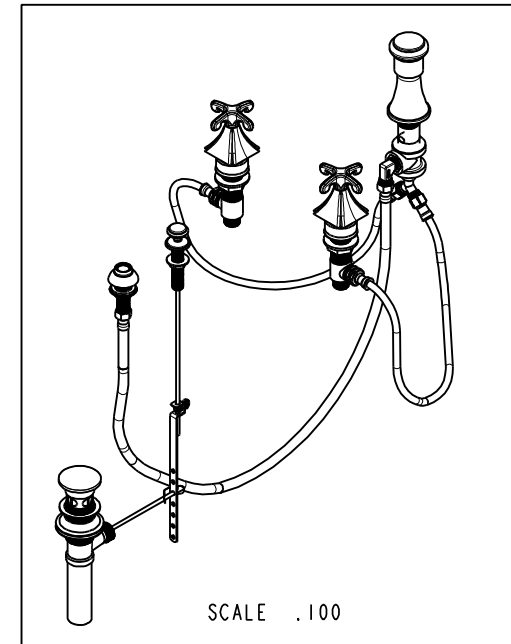
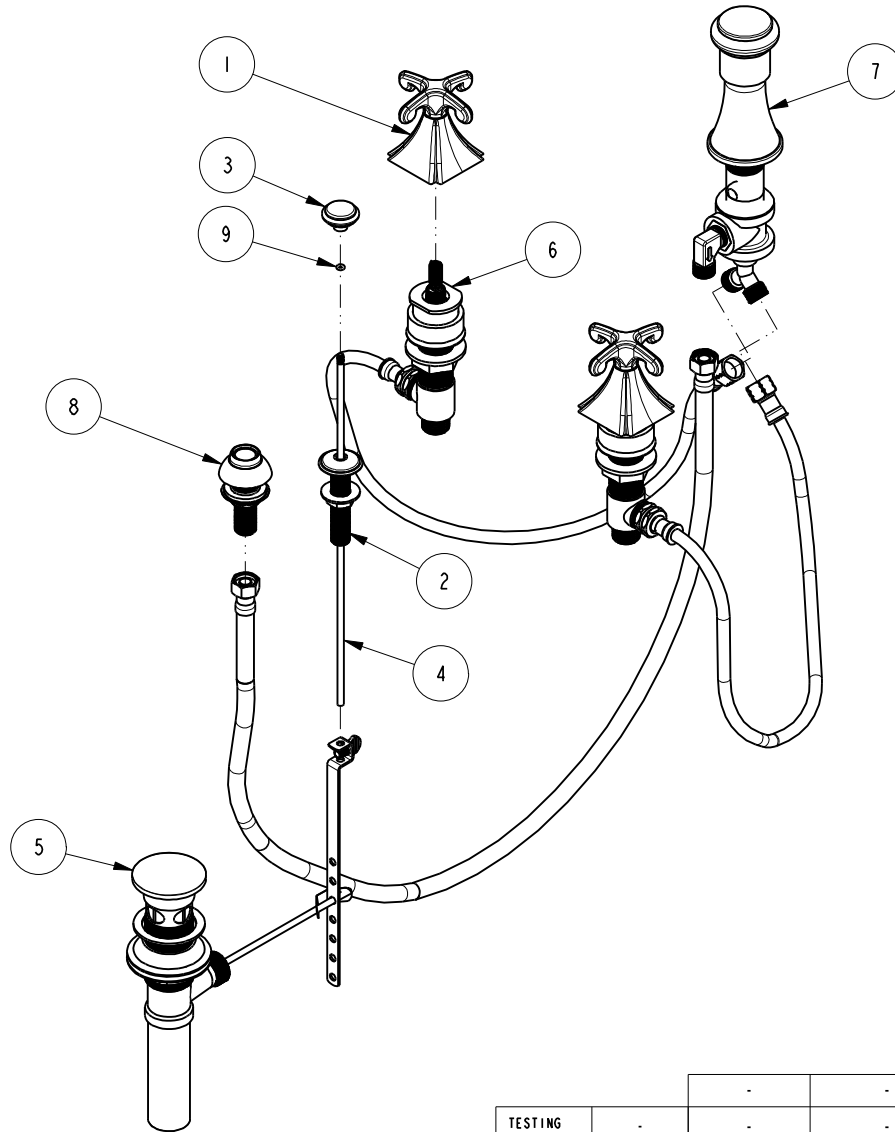


NOTES:

(N1) 1. FIT / FORM / FUNCTION SHALL FOLLOW PS-E.008.

BILL OF MATERIAL (CURRENT LEVEL)

| ITEM | PT/ASSY | DESCRIPTION | TYPE | QTY. |
|------|---------|-----------------------------------|----------|------|
| 1 | 3-607 | CROSS HANDLE ASM | ASSEMBLY | 2 |
| 2 | 8-020 | POP-UP GUIDE ASM | ASSEMBLY | 1 |
| 3 | 80005 | POP UP KNOB, ROUND | PART | 1 |
| 4 | 10288 | 3/16" POP UP ROD | PART | 1 |
| 5 | 325 | POP UP ASSEMBLY | ASSEMBLY | 1 |
| 6 | 1-728 | VALVE KIT - BIDET | ASSEMBLY | 1 |
| 7 | 8-021 | BIDET VACUUM BREAKER DIVERTER ASM | ASSEMBLY | 1 |
| 8 | 2-236 | DOUCHE SPRAY ASSEMBLY | ASSEMBLY | 1 |
| 9 | 91100 | O-RING, #2-006, EPDM, 65-75 DURO | PART | 1 |



| ZONE | REV | DESCRIPTION | DATE | APPROVED |
|------|-----|-------------|----------|----------|
| - | C | EN-3435 | 01/23/18 | J.A. |
| - | B | EN-2027b | 07/07/15 | AN |
| - | A | EN-1907 | 09/23/11 | - |
| - | - | EN-1735 | 06/10/11 | - |

COPYRIGHT 2005 BRASSTECH, INC. THESE DRAWINGS AND THE DESIGNS DEPICTED HEREIN ARE THE PROPRIETARY PROPERTY OF BRASSTECH. ANY USE OR REPRODUCTION IS SUBJECT TO THE EXPRESS APPROVAL OF BRASSTECH. UNAUTHORIZED USE IS STRICTLY PROHIBITED. ALL RIGHTS RESERVED.

| | | | |
|-------------------|----------------------------------|-------------|---------|
| TESTING | - | - | - |
| ASSEMBLY | - | - | - |
| PLATING | - | - | - |
| POLISHING | - | NEXT ASSY | USED ON |
| MACHINING | - | APPLICATION | |
| TOOLING FIXTURE # | REMOVE ALL BURRS AND SHARP EDGES | | |

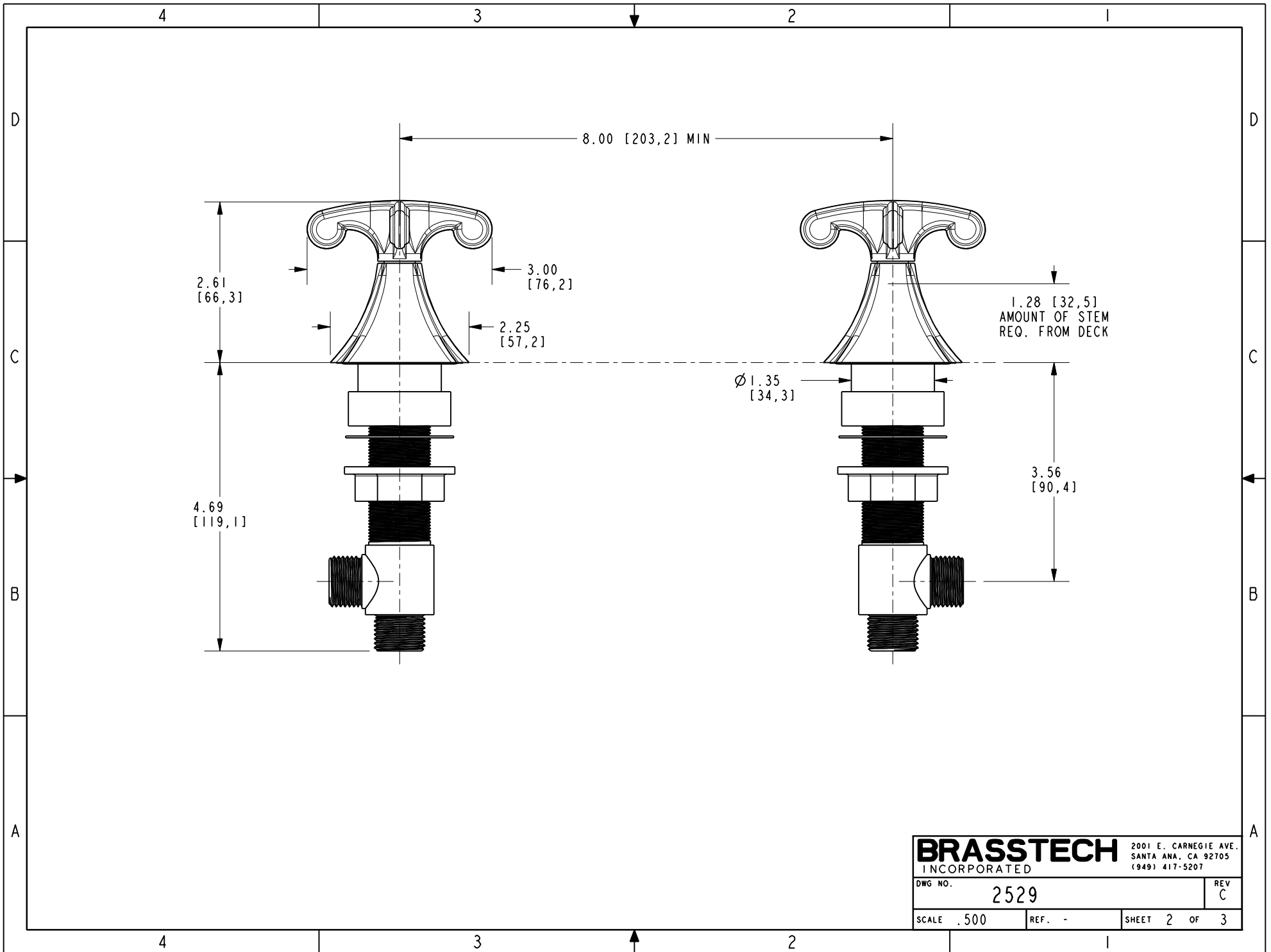
| | |
|---|-----------------|
| UNITS ARE: INCHES [MM] | |
| TOLERANCES ARE: | |
| FRACTIONS DECIMALS | ANGLES |
| ±1/16" | ±1° |
| .X ±.1 [2.5] | |
| .XX ±.06 [1.5] | |
| (X.XXX) DENOTES CRITICAL DIMS. ALL THREADS ARE CRITICAL | |
| DRAWN | JINSON 01/23/18 |
| CHECKED | J.A. 01/23/18 |
| APPROVED | J.A. 01/23/18 |

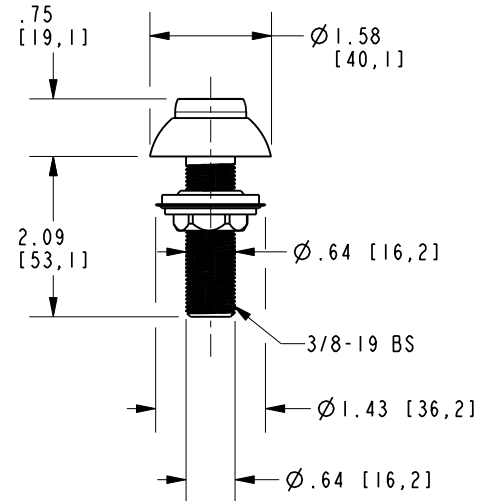
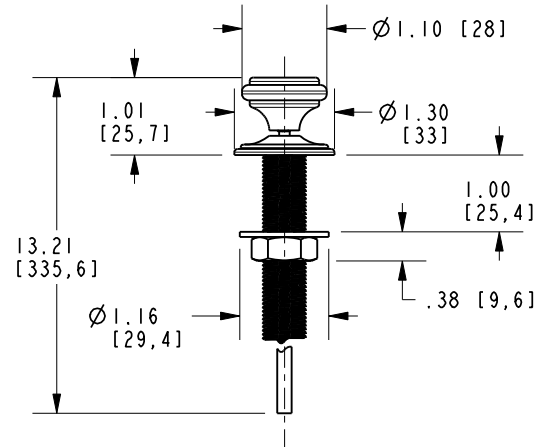
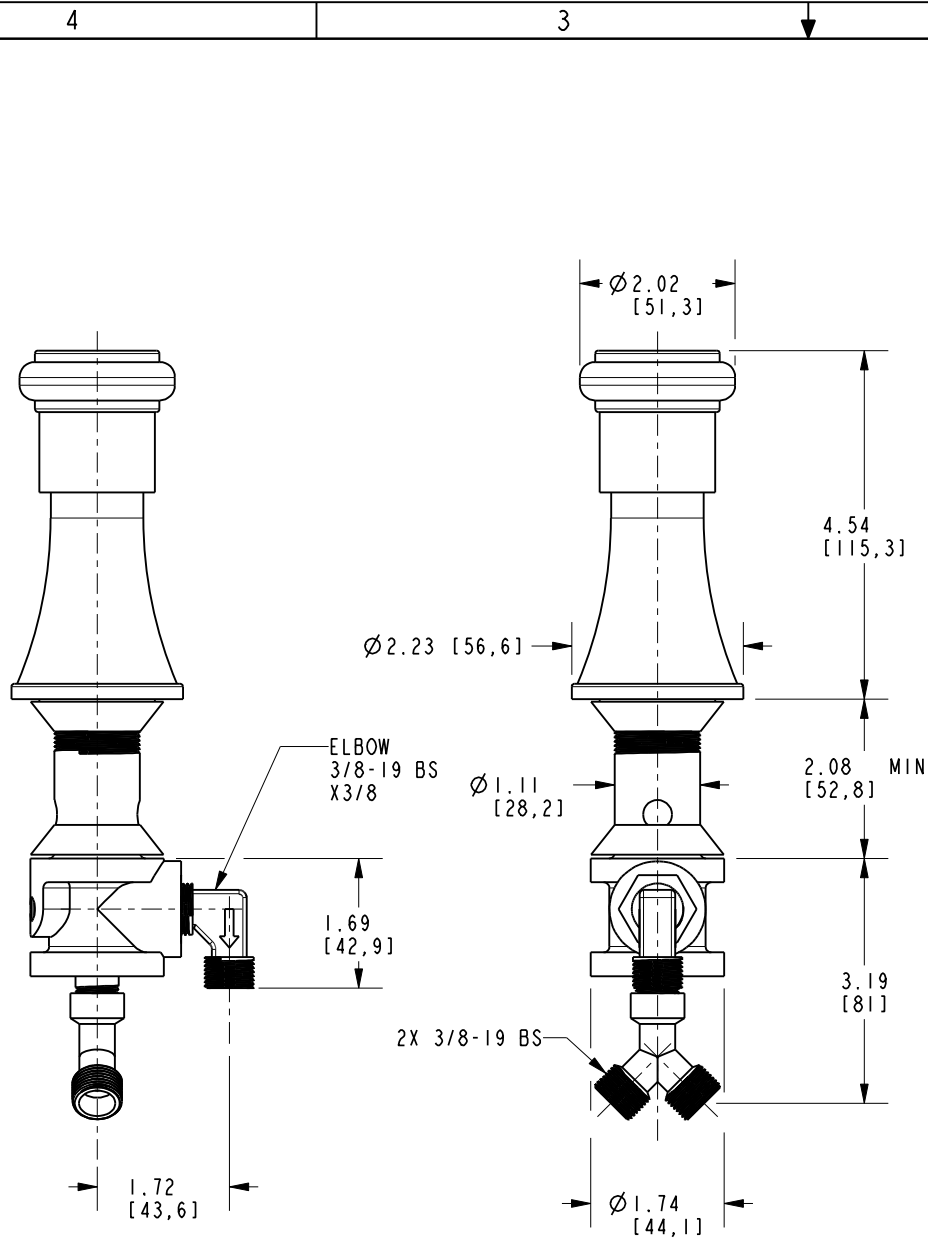
BRASSTECH 2001 CARNEGIE AVE. SANTA ANA, CA 92705 (949) 417-5207
INCORPORATED

BIDET SET - CROSS HANDLES

DWG NO. **2529** REV **C**

SCALE .175 REF. - SHEET | OF 3





BRASSTECH 2001 E. CARNEGIE AVE.
INCORPORATED SANTA ANA, CA 92705
(949) 417-5207

| | | | |
|---------|------|------|---|
| DWG NO. | 2529 | REV | C |
| SCALE | .400 | REF. | - |
| SHEET 3 | | OF 3 | |