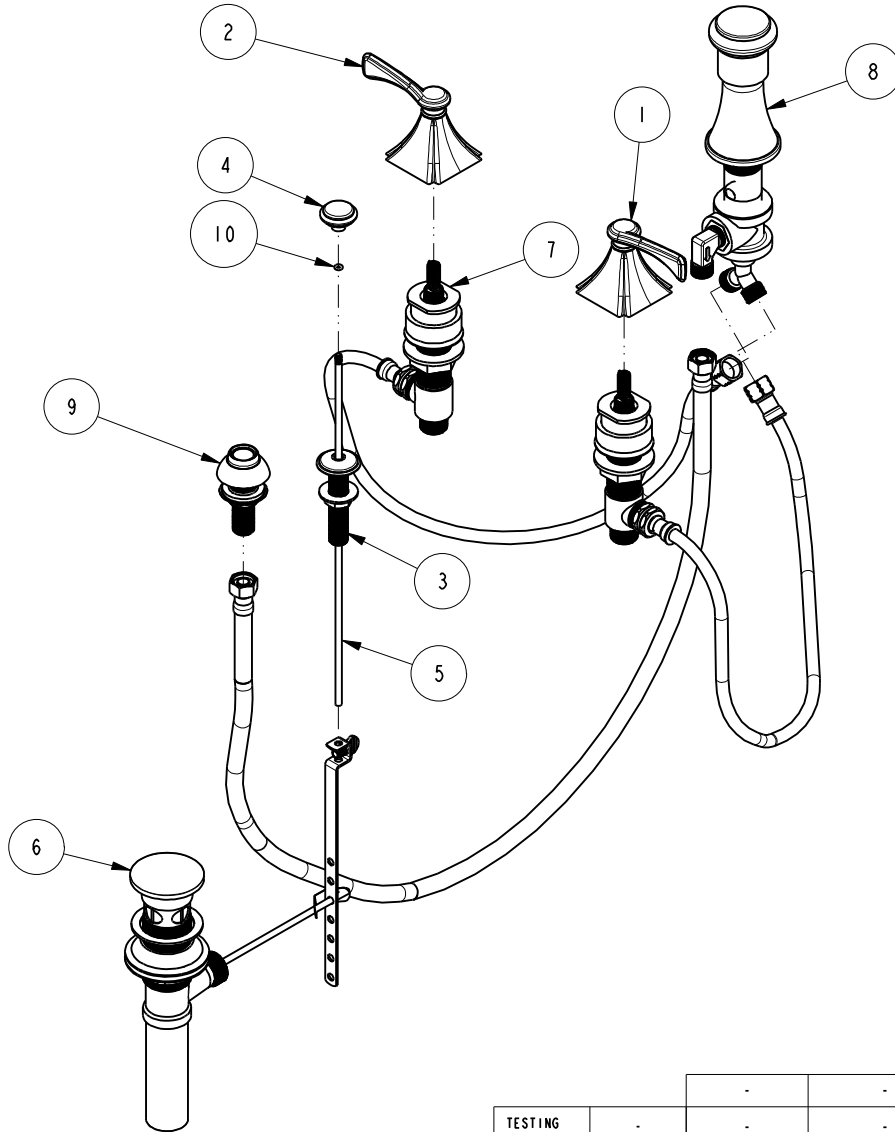


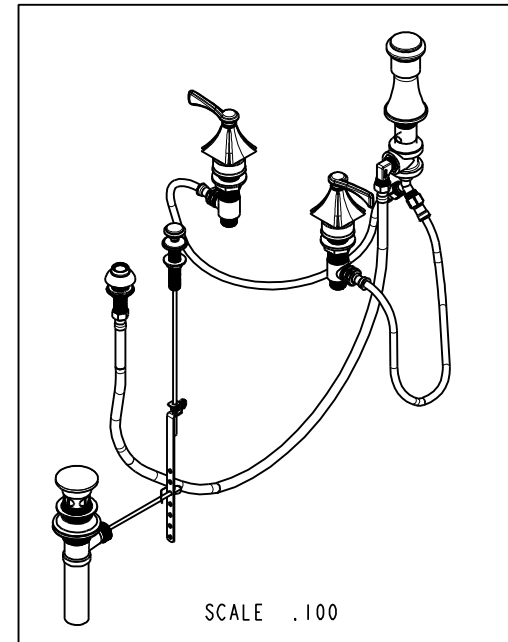
NOTES:

(N1) 1. FIT / FORM / FUNCTION SHALL FOLLOW PS-E.008.



**BILL OF MATERIAL (CURRENT LEVEL)**

ITEM	PT/ASSY	DESCRIPTION	TYPE	QTY.
1	3-604	LEVER HANDLE ASM - COLD	ASSEMBLY	1
2	3-605	LEVER HANDLE ASM - HOT	ASSEMBLY	1
3	8-020	POP-UP GUIDE ASM	ASSEMBLY	1
4	80005	POP UP KNOB, ROUND	PART	1
5	10288	3/16" POP UP ROD	PART	1
6	325	POP UP ASSEMBLY	ASSEMBLY	1
7	1-728	VALVE KIT - BIDET	ASSEMBLY	1
8	8-021	BIDET VACUUM BREAKER DIVERTER ASM	ASSEMBLY	1
9	2-236	DOUCHE SPRAY ASSEMBLY	ASSEMBLY	1
10	91100	O-RING, #2-006, EPDM, 65-75 DURO	PART	1



UNITS ARE: INCHES [MM]  
 TOLERANCES ARE:  
 FRACTIONS DECIMALS ANGLES  
 $\pm 1/16"$  .X  $\pm .1$  [2,5]  $\pm 1^\circ$   
 .XX  $\pm .06$  [1,5]  
 (X.XXX) DENOTES CRITICAL DIMS.  
 ALL THREADS ARE CRITICAL

**BRASSTECH** INCORPORATED  
 2001 CARNEGIE AVE.  
 SANTA ANA, CA 92705  
 (949) 417-5207

**BIDET SET - LEVER HANDLES**

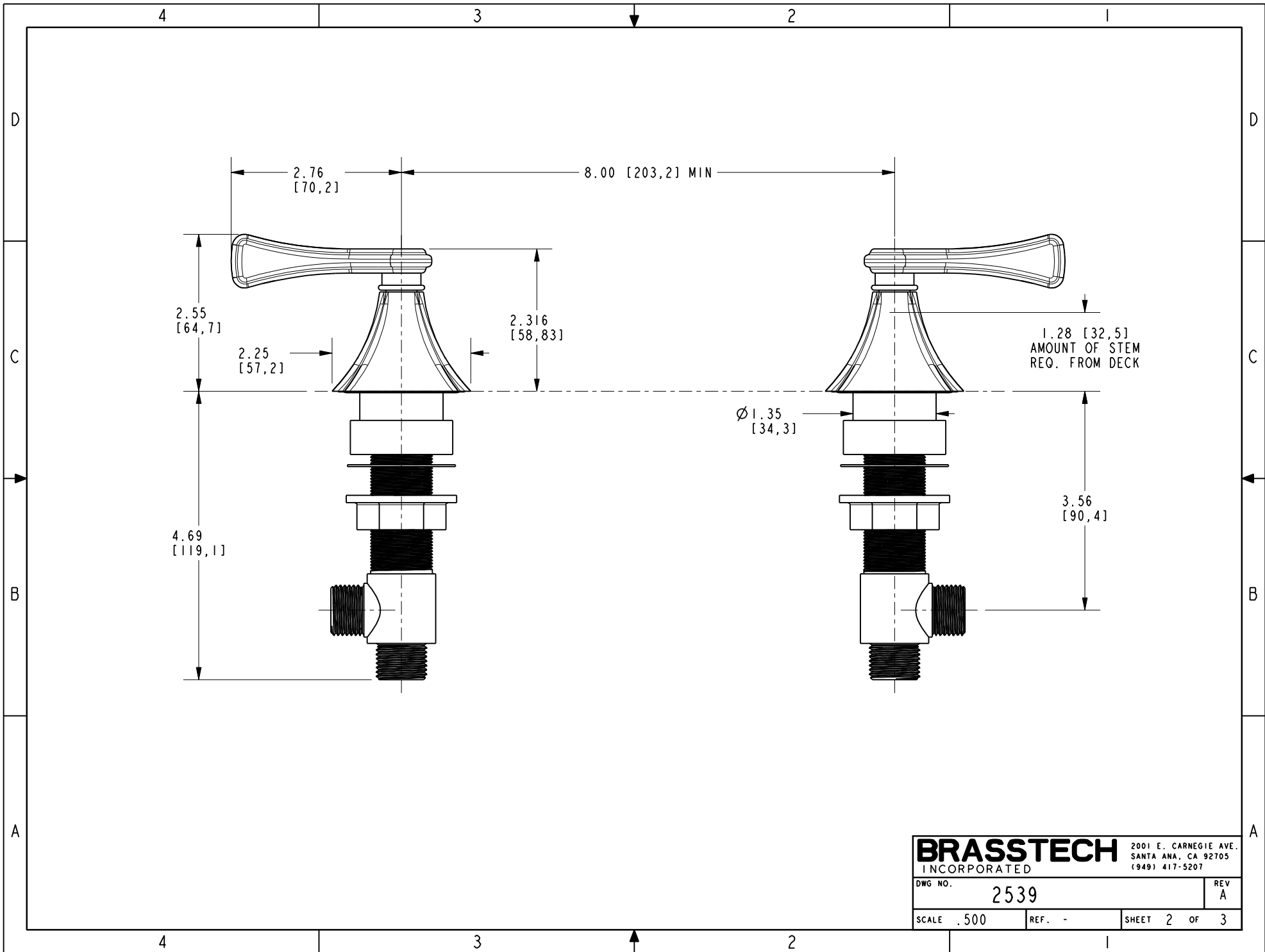
ZONE	REV	DESCRIPTION	DATE	APPROVED
-	A	EN-3435	01/23/18	J.A.
-	-	EN-1735	06/10/11	-

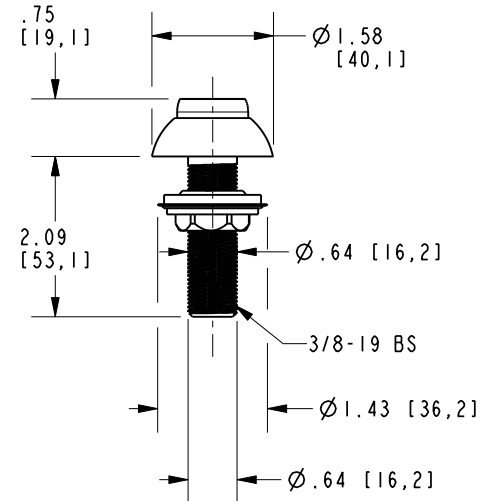
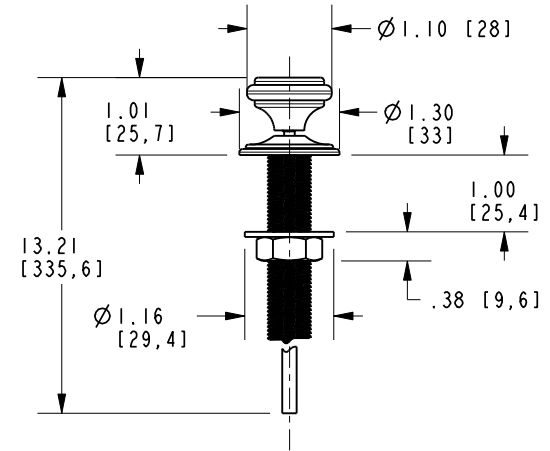
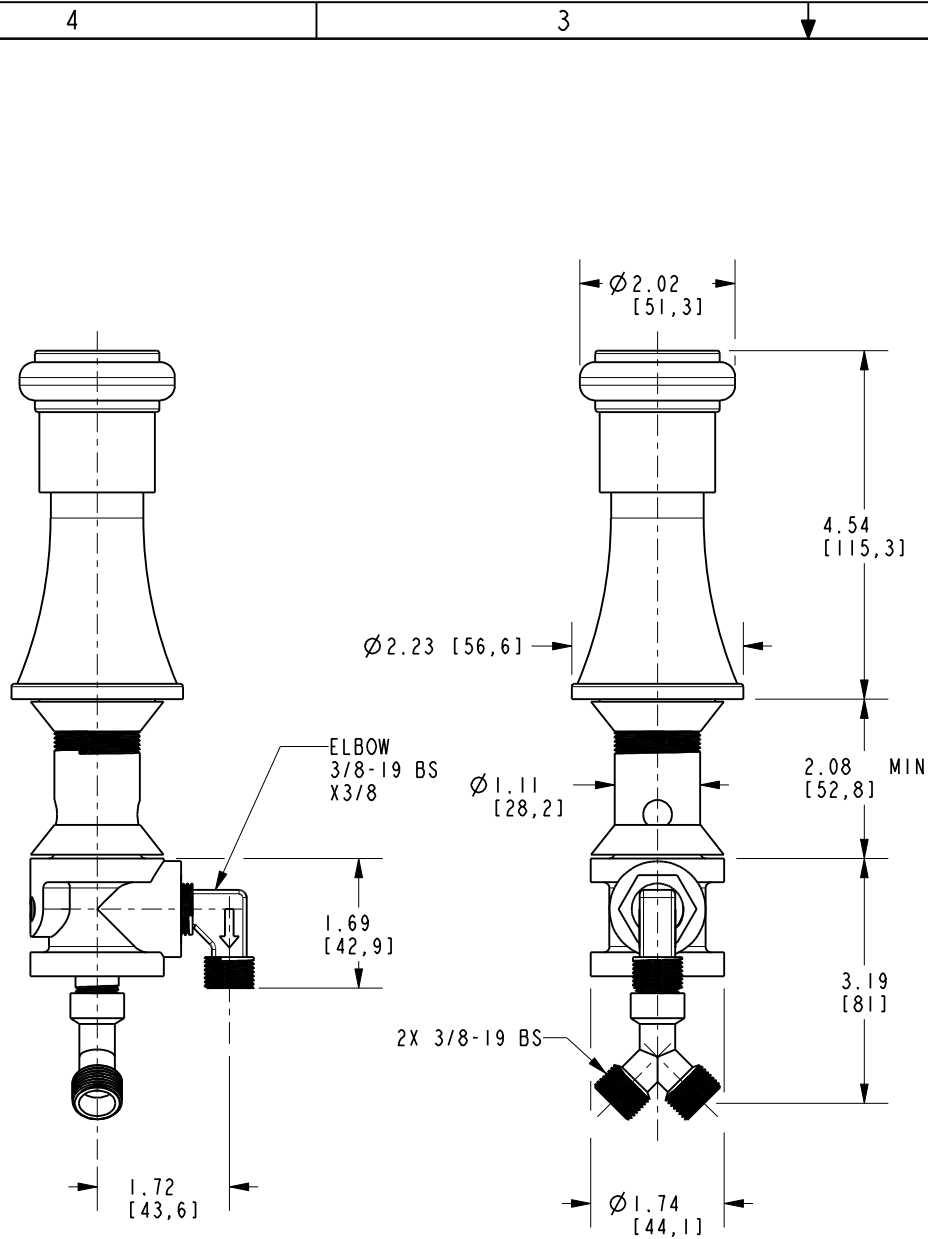
COPYRIGHT 2005 BRASSTECH, INC.  
 THESE DRAWINGS AND THE DESIGNS  
 DEPICTED HEREIN ARE THE PROPRIETARY  
 PROPERTY OF BRASSTECH. ANY USE  
 OR REPRODUCTION IS SUBJECT TO  
 THE EXPRESS APPROVAL OF BRASSTECH.  
 UNAUTHORIZED USE IS STRICTLY  
 PROHIBITED. ALL RIGHTS RESERVED.

TESTING	ASSEMBLY	PLATING	POLISHING	MACHINING	TOOLING FIXTURE #	APPLICATION
-	-	-	-	-	-	REMOVE ALL BURRS AND SHARP EDGES

DRAWN	CHECKED	APPROVED
JINSON	J.A.	J.A.

DWG NO.	REV	SCALE	REF.	SHEET	OF
2539	A	.175	-	1	3





<b>BRASSTECH</b>		2001 E. CARNEGIE AVE. SANTA ANA, CA 92705 (949) 417-5207	
DWG NO.	2539	REV	A
SCALE .400	REF. -	SHEET 3	OF 3