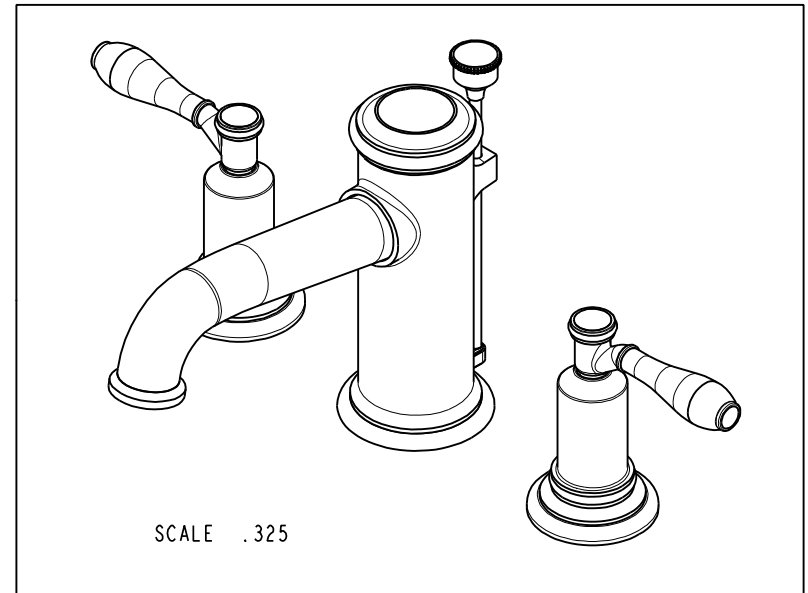
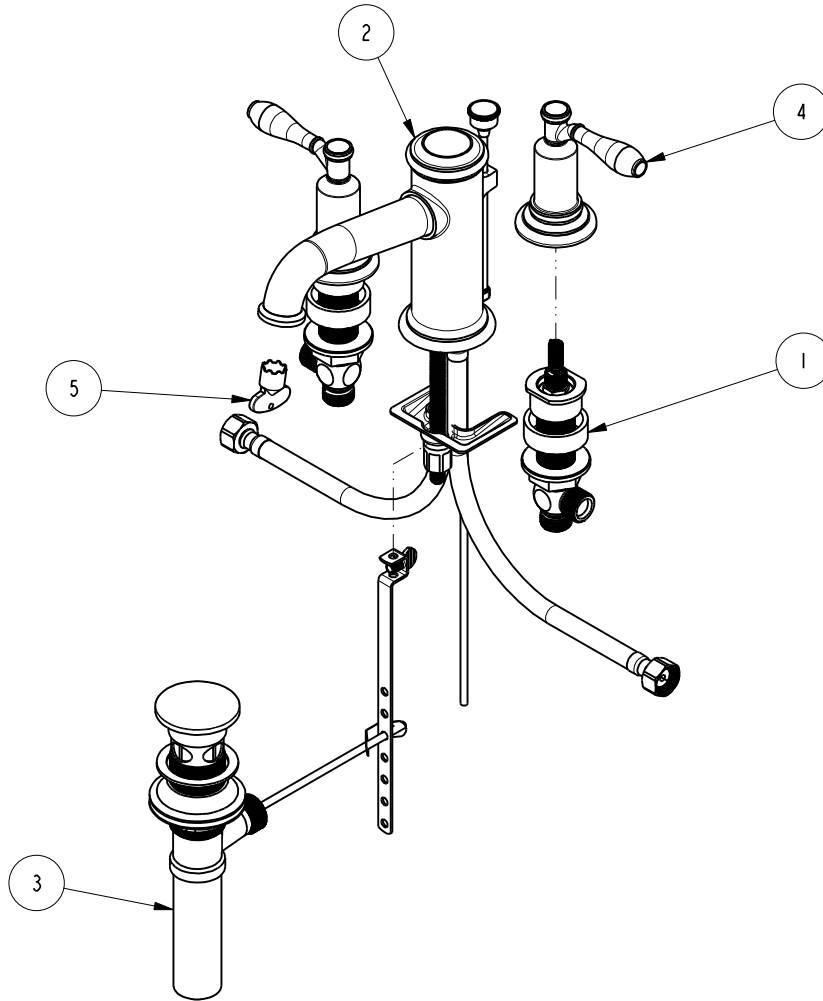


NOTES:

1. TO INSPECT ASSEMBLY, FOLLOW FIRST ARTICLE AND IN PROCESS INSPECTION SHEET.

BILL OF MATERIAL (CURRENT LEVEL)

ITEM	PT/ASSY	DESCRIPTION	TYPE	QTY.
1	1-676	W/S VALVE INSTALLATION	ASSEMBLY	1
2	8-061	LAVATORY SPOUT	ASSEMBLY	1
3	325	POP UP ASSEMBLY	ASSEMBLY	1
4	3-593	FLOW CONTROL HANDLE	ASSEMBLY	2
5	11403	AERATOR KEY	PART	1



ZONE	REV	DESCRIPTION	DATE	APPROVED
-	D	EN-4300m	11/05/20	R.S.
-	C	EN-3601	05/07/18	V.V.
-	B	EN-3271A	12/21/17	J.A.
-	A	EN-2811	09/22/14	-
-	-	EN-1735	06/10/11	-

COPYRIGHT 2005 BRASSTECH, INC. THESE DRAWINGS AND THE DESIGNS DEPICTED HEREIN ARE THE PROPRIETARY PROPERTY OF BRASSTECH. ANY USE OR REPRODUCTION IS SUBJECT TO THE EXPRESS APPROVAL OF BRASSTECH. UNAUTHORIZED USE IS STRICTLY PROHIBITED. ALL RIGHTS RESERVED.

TESTING	-	-	-
ASSEMBLY	-	-	-
PLATING	-	-	-
POLISHING	-	NEXT ASSY	USED ON
MACHINING	-	APPLICATION	
TOOLING FIXTURE #	REMOVE ALL BURRS AND SHARP EDGES		

UNITS ARE: INCHES [MM]		
TOLERANCES ARE:		
FRACTIONS	DECIMALS	ANGLES
±1/16"	.X ±.1 [2,5]	±1°
	.XX ±.06 [1,5]	
(X.XXX) DENOTES CRITICAL DIMS.		
ALL THREADS ARE CRITICAL		
DRAWN	JINSON	11/05/20
CHECKED	R.S.	11/05/20
APPROVED	R.S.	11/05/20

BRASSTECH 2001 CARNEGIE AVE.
INCORPORATED SANTA ANA, CA 92705
(949) 417-5207

W/S LAVATORY FAUCET

DWG NO. 2550 REV D

SCALE .200 REF. - SHEET 1 OF 2

