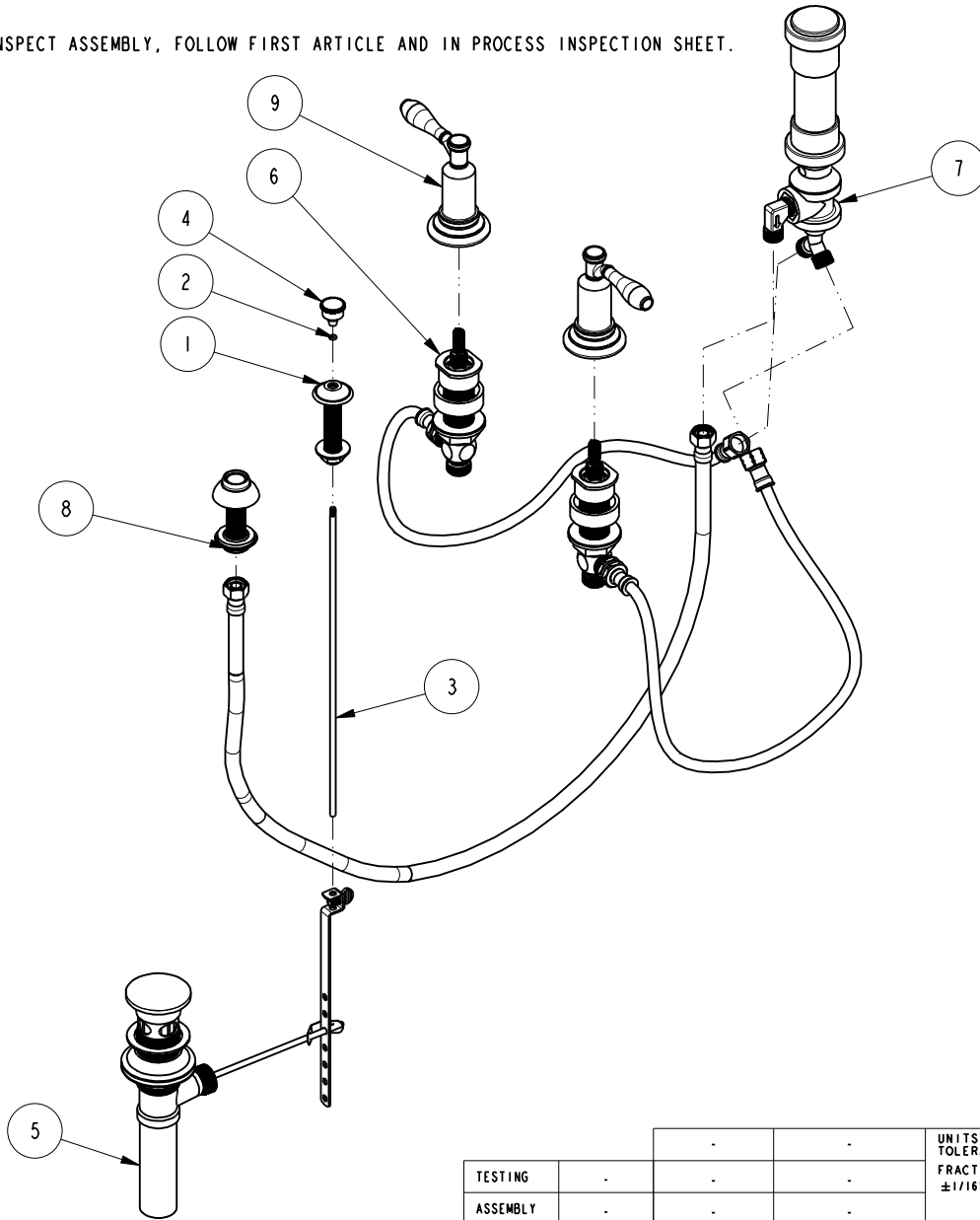


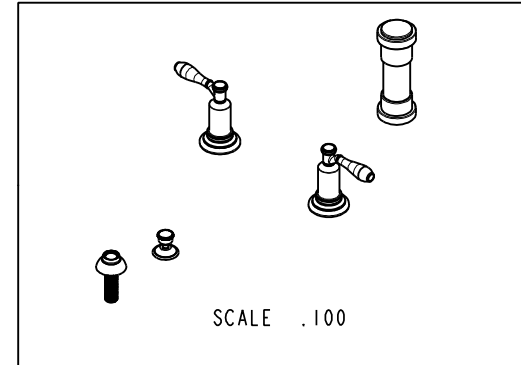
NOTES:

1. TO INSPECT ASSEMBLY, FOLLOW FIRST ARTICLE AND IN PROCESS INSPECTION SHEET.



BILL OF MATERIAL (CURRENT LEVEL)

ITEM	PT/ASSY	DESCRIPTION	TYPE	QTY.
1	8-101	POP-UP GUIDE ASM	ASSEMBLY	1
2	91100	O-RING, #2-006, EPDM, 65-75 DURO	PART	1
3	10288	3/16" POP UP ROD	PART	1
4	80158	POP UP ROD KNOB	PART	1
5	325	POP UP ASSEMBLY	ASSEMBLY	1
6	1-582	VALVE KIT - BIDET	ASSEMBLY	1
7	8-039	BIDET VACUUM BREAKER DIVERTER ASM	ASSEMBLY	1
8	2-236	DOUCHE SPRAY ASSEMBLY	ASSEMBLY	1
9	3-593	FLOW CONTROL HANDLE	ASSEMBLY	2



ZONE	REV	DESCRIPTION	DATE	APPROVED
-	B	EN-4300c	01/08/21	R.S.
-	A	EN-3271A	12/21/17	J.A.
-	-	EN-1735	06/10/11	-

COPYRIGHT 2005 BRASSTECH, INC. THESE DRAWINGS AND THE DESIGNS DEPICTED HEREIN ARE THE PROPRIETARY PROPERTY OF BRASSTECH. ANY USE OR REPRODUCTION IS SUBJECT TO THE EXPRESS APPROVAL OF BRASSTECH. UNAUTHORIZED USE IS STRICTLY PROHIBITED. ALL RIGHTS RESERVED.

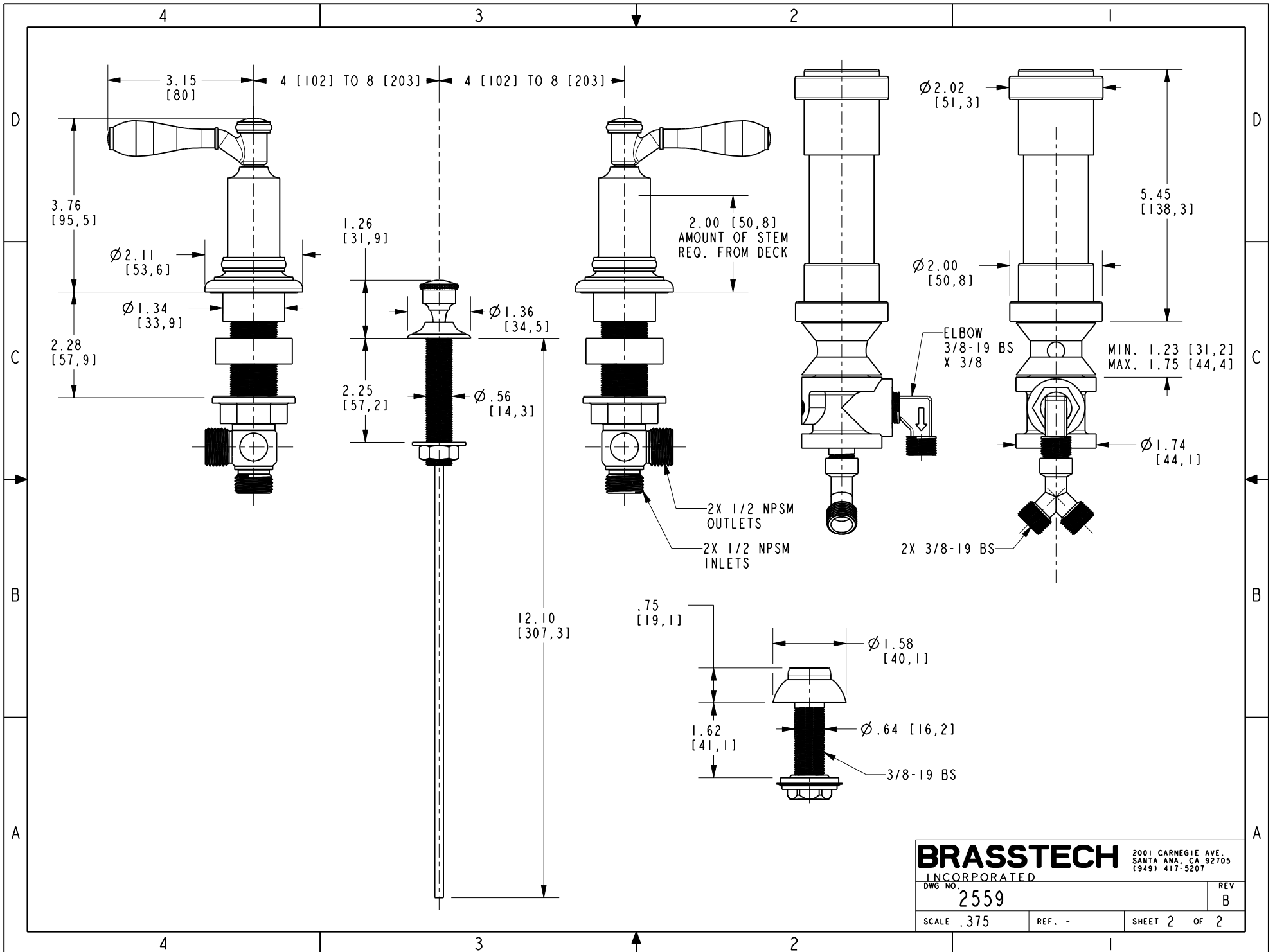
TESTING	-	-	-
ASSEMBLY	-	-	-
PLATING	-	-	-
POLISHING	-	NEXT ASSY	USED ON
MACHINING	-	APPLICATION	
TOOLING FIXTURE #	REMOVE ALL BURRS AND SHARP EDGES		

UNITS ARE: INCHES [MM]		
TOLERANCES ARE:		
FRACTIONS DECIMALS	ANGLES	
±1/16"	±1°	
.x ±.1 [2,5]		
.xx ±.06 [1,5]		
(X.XXX) DENOTES CRITICAL DIMS.		
ALL THREADS ARE CRITICAL		
DRAWN	JINSON	01/08/21
CHECKED	R.S.	01/08/21
APPROVED	R.S.	01/08/21

**BRASSTECH** 2001 CARNEGIE AVE.  
INCORPORATED SANTA ANA, CA 92705  
(949) 417-5207

BIDET SET

DWG NO.	2559	REV	B
SCALE	.156	REF.	-
SHEET	1	OF	2



<b>BRASSTECH</b>		2001 CARNEGIE AVE. SANTA ANA, CA 92705 (949) 417-5207	
INCORPORATED			
DWG NO.	2559	REV	B
SCALE	.375	REF.	-
		SHEET	2 OF 2