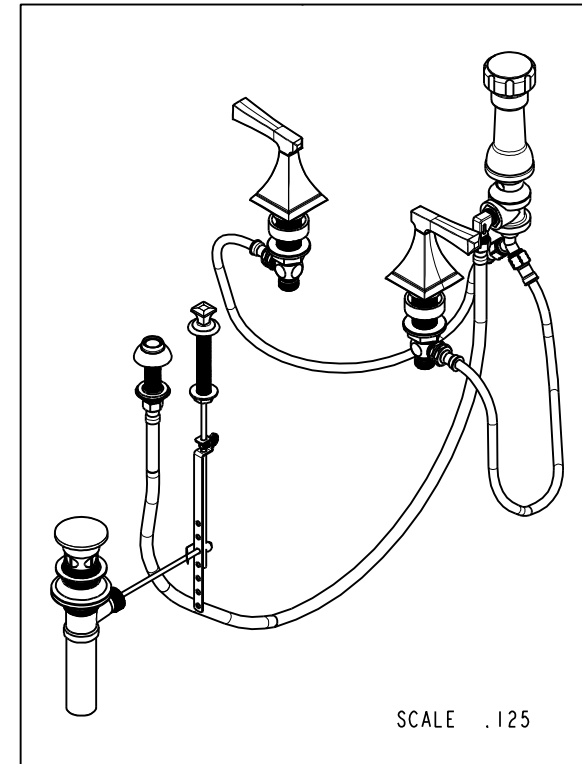
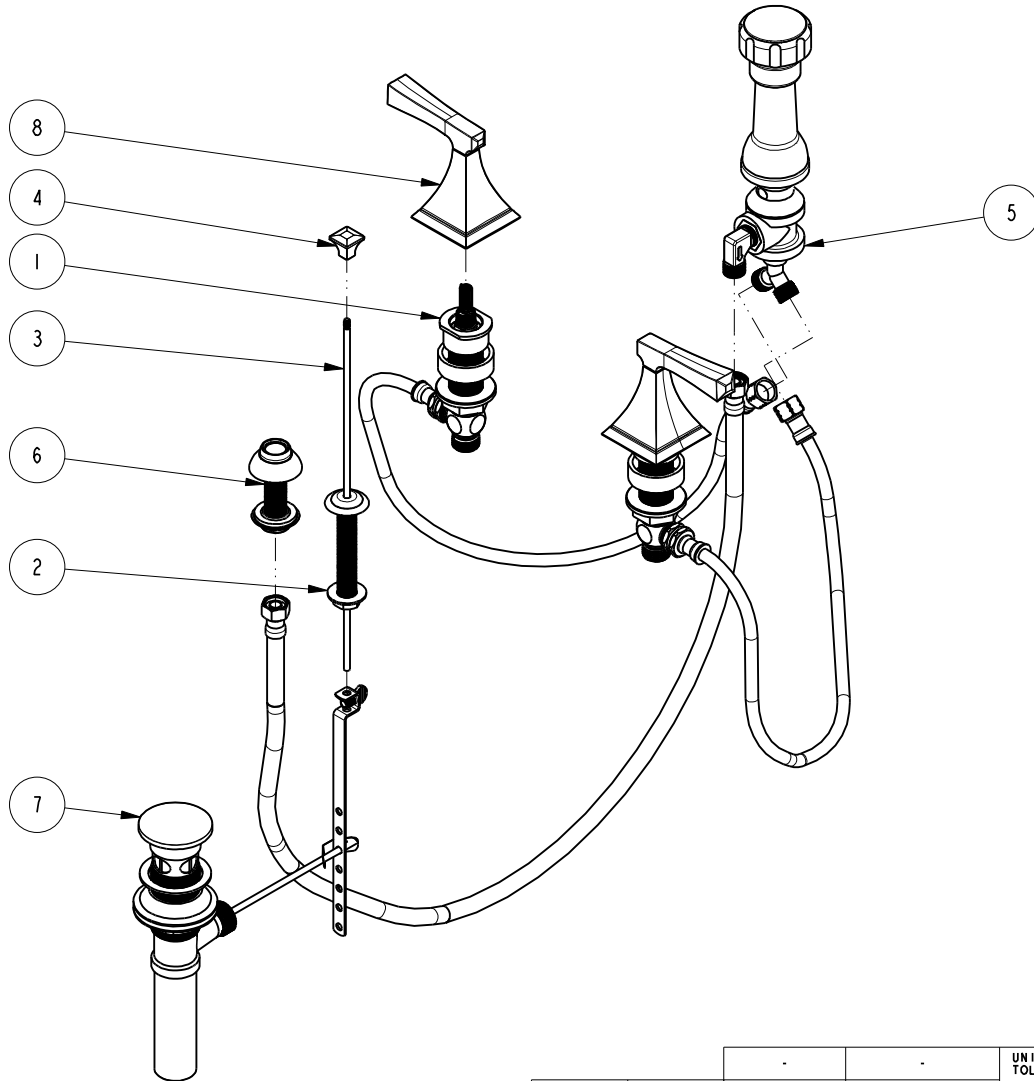


NOTES:

1. TO INSPECT ASSEMBLY, FOLLOW FIRST ARTICLE AND IN PROCESS INSPECTION SHEET.

BILL OF MATERIAL (CURRENT LEVEL)

ITEM	PT/ASSY	DESCRIPTION	TYPE	QTY.
1	1-667	VALVE KIT ASSEMBLY	ASSEMBLY	1
2	2-159	POP-UP ROD GUIDE ASSEMBLY	ASSEMBLY	1
3	10288	3/16" POP UP ROD	PART	1
4	12363	POP UP KNOB	PART	1
5	2-235	BIDET DIVERTER / V. BRE	ASSEMBLY	1
6	2-236	DOUCHE SPRAY ASSEMBLY	ASSEMBLY	1
7	325	POP UP ASSEMBLY	ASSEMBLY	1
8	3-594	LEVER HANDLE W/ESC.	ASSEMBLY	2



ZONE	REV	DESCRIPTION	DATE	APPROVED
-	B	EN-4300c	01/08/21	R.S.
-	A	EN-3185	11/19/16	R.S.
-	-	EN-2367b	05/20/15	J.M.

COPYRIGHT 2005 BRASSTECH, INC. THESE DRAWINGS AND THE DESIGNS DEPICTED HEREIN ARE THE PROPRIETARY PROPERTY OF BRASSTECH. ANY USE OR REPRODUCTION IS SUBJECT TO THE EXPRESS APPROVAL OF BRASSTECH. UNAUTHORIZED USE IS STRICTLY PROHIBITED. ALL RIGHTS RESERVED.

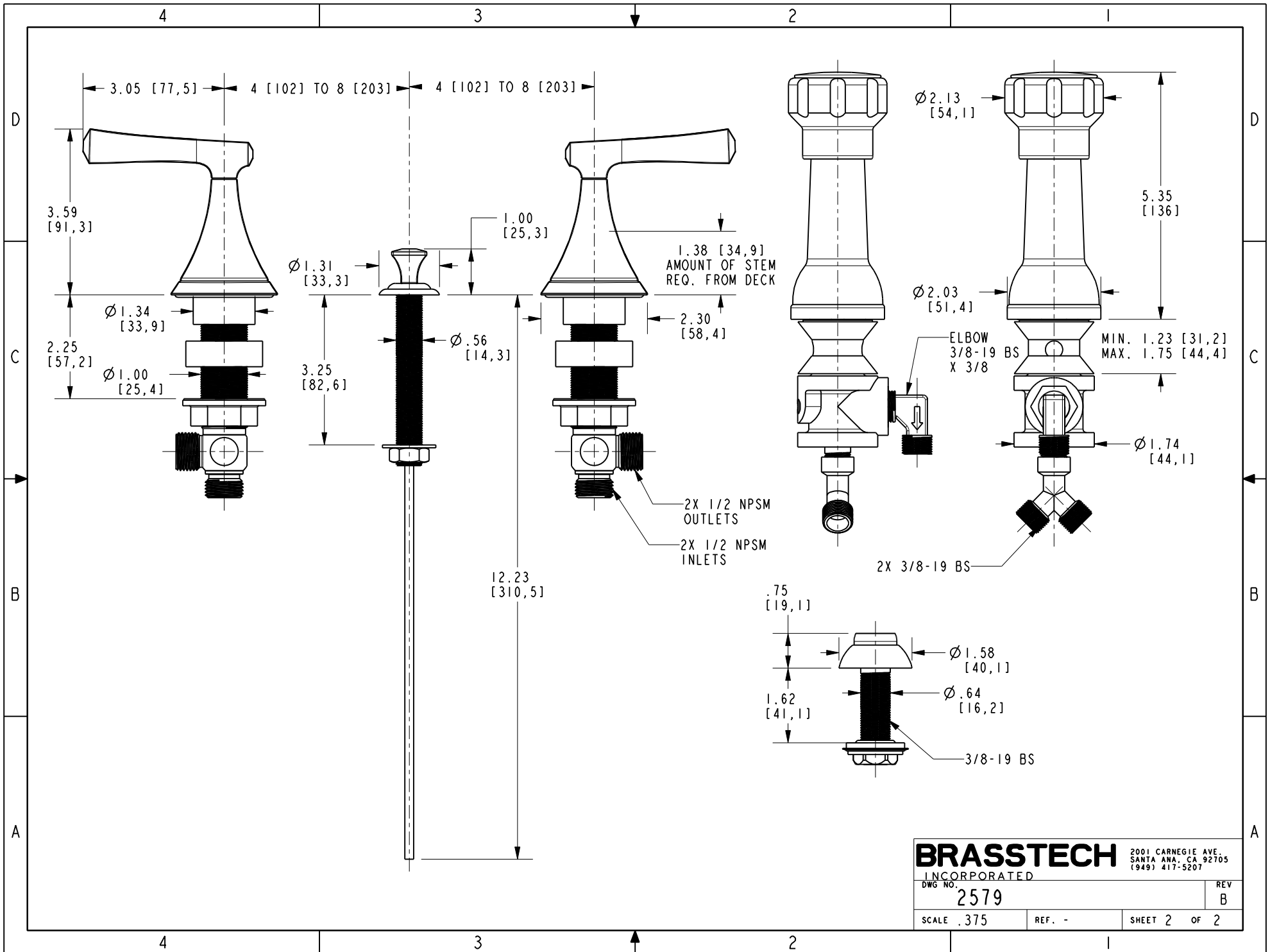
TESTING	-	-	-
ASSEMBLY	-	-	-
PLATING	-	-	-
POLISHING	-	NEXT ASSY	USED ON
MACHINING	-	APPLICATION	
TOOLING FIXTURE #	REMOVE ALL BURRS AND SHARP EDGES		

UNITS ARE: INCHES [MM]		
TOLERANCES ARE:		
FRACTIONS DECIMALS	ANGLES	
±1/16"	±°	
.x ±.1	[2,5]	
.xx ±.06	[1,5]	
(X.XXX) DENOTES CRITICAL DIMS.		
ALL THREADS ARE CRITICAL		
DRAWN	JINSON	01/08/21
CHECKED	R.S.	01/08/21
APPROVED	R.S.	01/08/21

**BRASSTECH** 2001 CARNEGIE AVE.  
INCORPORATED SANTA ANA, CA 92705  
(949) 417-5207

BIDET SET

DWG NO.	2579	REV	B
SCALE	.175	REF.	-
SHEET	1	OF	2



<b>BRASSTECH</b>		2001 CARNEGIE AVE. SANTA ANA, CA 92705 (949) 417-5207	
INCORPORATED			
DWG NO. 2579		REV B	
SCALE .375	REF. -	SHEET 2 OF 2	