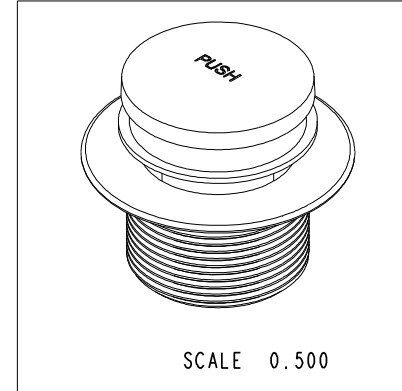
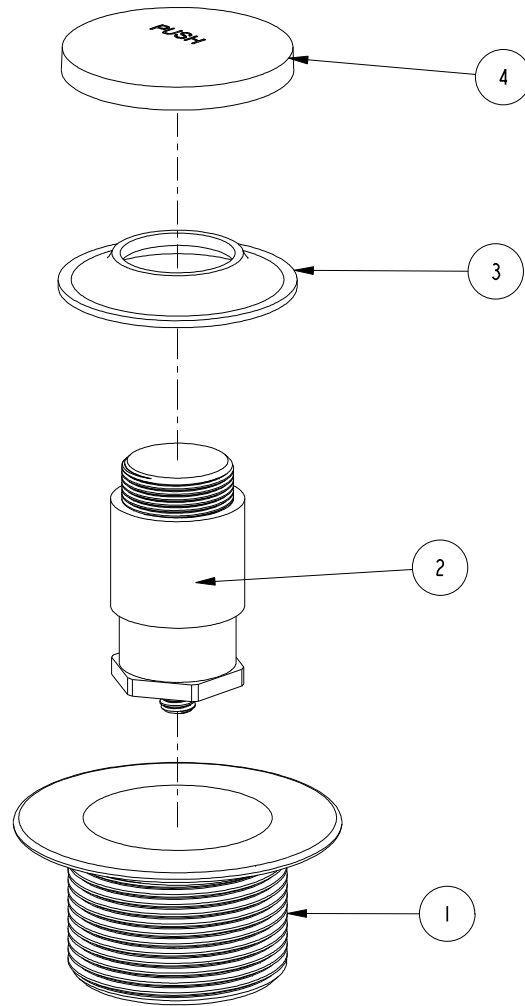


NOTES:

1. TO INSPECT ASSEMBLY, FOLLOW FIRST ARTICLE AND IN PROCESS INSPECTION SHEET.

**BILL OF MATERIAL (CURRENT LEVEL)**

ITEM	PT/ASSY	DESCRIPTION	TYPE	QTY.
1	50272	STRAINER BODY	PART	1
2	50274	PLUNGER ASM	PART	1
3	91172	RBR SEAL	PART	1
4	50273	CAP	PART	1



D

C

B

A

D

C

B

A

ZONE	REV	DESCRIPTION	DATE	APPROVED
-	A	EN-430011	10/21/21	R. S.
-	-	RELEASED	03/28/08	-

COPYRIGHT 2005 BRASSTECH, INC. THESE DRAWINGS AND THE DESIGNS DEPICTED HEREIN ARE THE PROPRIETARY PROPERTY OF BRASSTECH. ANY USE OR REPRODUCTION IS SUBJECT TO THE EXPRESS APPROVAL OF BRASSTECH. UNAUTHORIZED USE IS STRICTLY PROHIBITED. ALL RIGHTS RESERVED.

TESTING	ASSEMBLY	PLATING	POLISHING	MACHINING	TOOLING FIXTURE #	APPLICATION
-	-	-	-	-	-	REMOVE ALL BURRS AND SHARP EDGES
-	-	-	-	-	-	USED ON
-	-	-	-	-	-	NEXT ASSY

UNITS ARE:	FRACTIONS	DECIMALS	ANGLES
INCHES			DEGREES
[MM]			
TOLERANCES ARE:			
	±1/16"	.X ±.1 [2.5]	±1°
		.XX ±.06 [1.5]	

(X.XXX) DENOTES CRITICAL DIMS. ALL THREADS ARE CRITICAL

DRAWN	CHECKED	APPROVED
-	-	-
03/28/08	03/28/08	03/28/08

**BRASSTECH** 2001 CARNEGIE AVE. SANTA ANA, CA 92705 (949) 417-5207  
INCORPORATED

**TOE ACTIVATED TUB DR**

DWG NO. **272** REV **A**

SCALE 0.600 REF. - SHEET 1 OF 2

4

3

2

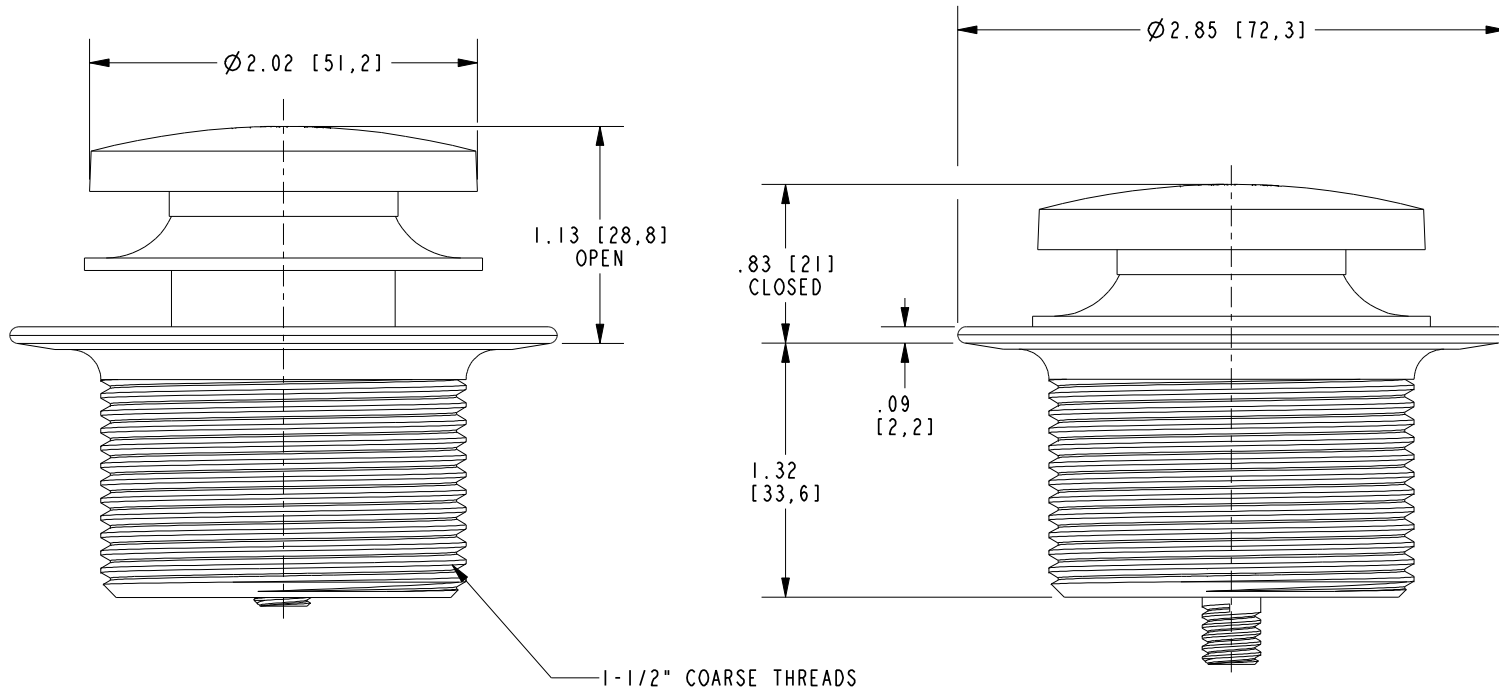
1

4

3

2

1



<b>BRASSTECH</b>		2001 E. CARNEGIE AVE. SANTA ANA, CA 92705 (949) 417-5207	
DWG NO.	272	REV	A
SCALE	1.000	REF.	-
SHEET		2	OF 2