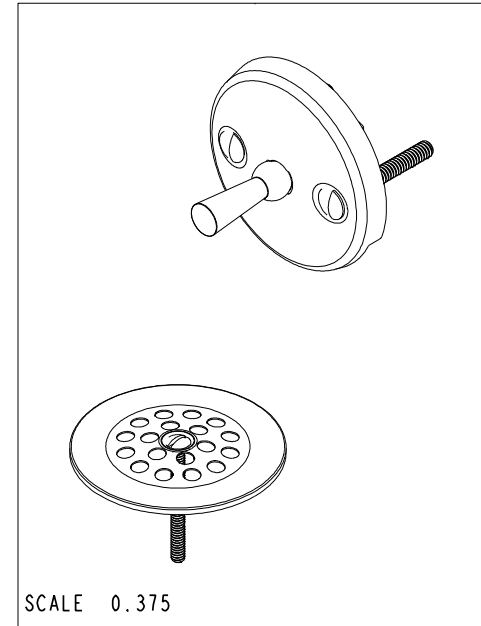
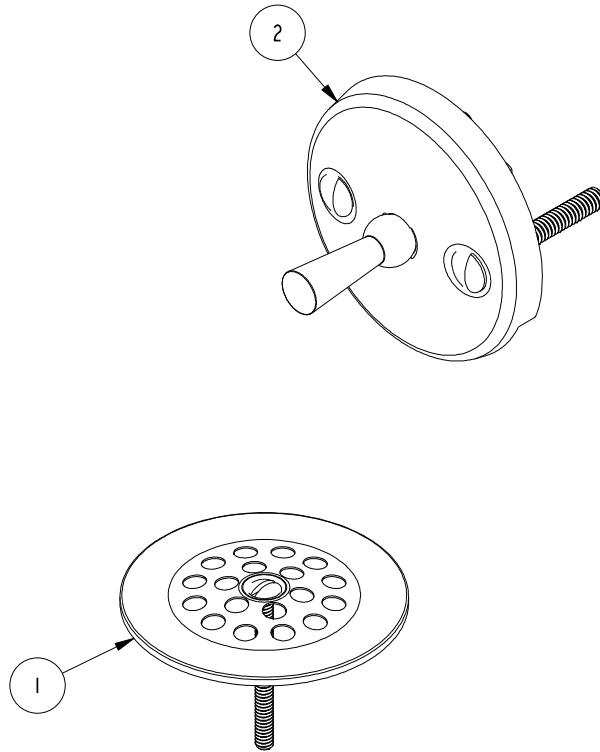


NOTES:

1. TO INSPECT ASSEMBLY, FOLLOW FIRST ARTICLE AND IN PROCESS INSPECTION SHEET.

**BILL OF MATERIAL (CURRENT LEVEL)**

ITEM	PT/ASSY	DESCRIPTION	TYPE	QTY.
1	260	GERBER TYPE STRAINER	ASSEMBLY	1
2	267	TRIP LEVER FACEPLATE	ASSEMBLY	1

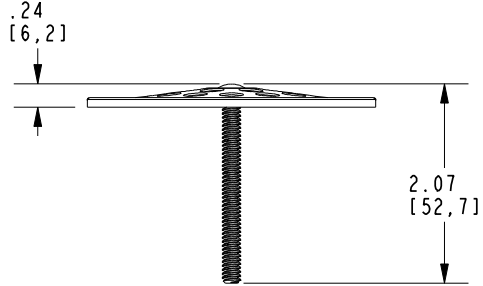
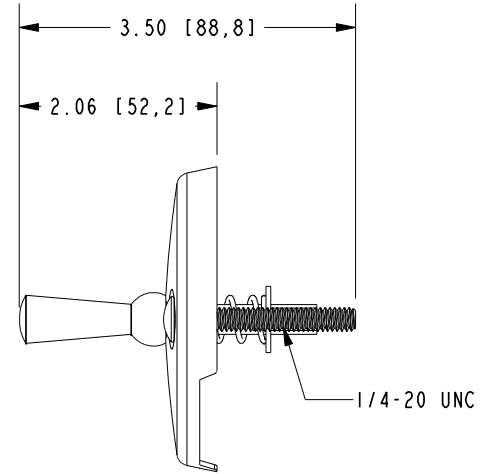
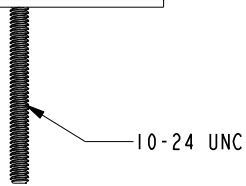
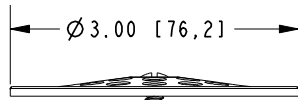
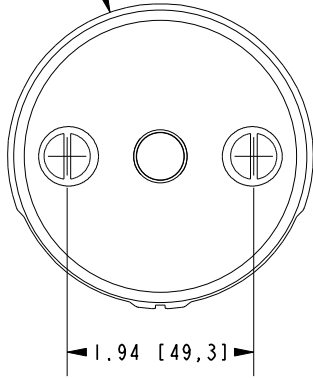


<p>UNITS ARE: INCHES [MM] TOLERANCES ARE: FRACTIONS DECIMALS ANGLES ±1/16" .X ±.1 [2.5] ±1° .XX ±.06 [1.5]</p>					<p><b>BRASSTECH</b> 2001 CARNEGIE AVE. INCORPORATED SANTA ANA, CA 92705 (949) 417-5207</p>	
<p>(X.XXX) DENOTES CRITICAL DIMS. ALL THREADS ARE CRITICAL</p>					<p><b>TRIP LEVER DRAIN KIT</b></p>	
<p>DRAWN - 05/17/13</p>					<p>DWG NO. <b>275</b> REV <b>A</b></p>	
<p>CHECKED - 05/17/13</p>					<p>SCALE 0.500 REF. - SHEET 1 OF 2</p>	
<p>APPROVED - 05/17/13</p>						
<p>TOOLING FIXTURE # REMOVE ALL BURRS AND SHARP EDGES</p>						

COPYRIGHT 2005 BRASSTECH, INC.  
THESE DRAWINGS AND THE DESIGNS  
DEPICTED HEREIN ARE THE PROPRIETARY  
PROPERTY OF BRASSTECH. ANY USE  
OR REPRODUCTION IS SUBJECT TO  
THE EXPRESS APPROVAL OF BRASSTECH.  
UNAUTHORIZED USE IS STRICTLY  
PROHIBITED. ALL RIGHTS RESERVED.

ZONE	REV	DESCRIPTION	DATE	APPROVED
-	A	EN-430011	10/21/21	R.S.
-	-	EN-2537	05/17/13	R.S.

Ø 3.18  
[80,8]



<b>BRASSTECH</b>		2001 E. CARNEGIE AVE. SANTA ANA, CA 92705 (949) 417-5207	
DWG NO.	275	REV	A
SCALE	0.500	REF.	-
SHEET		2	OF 2