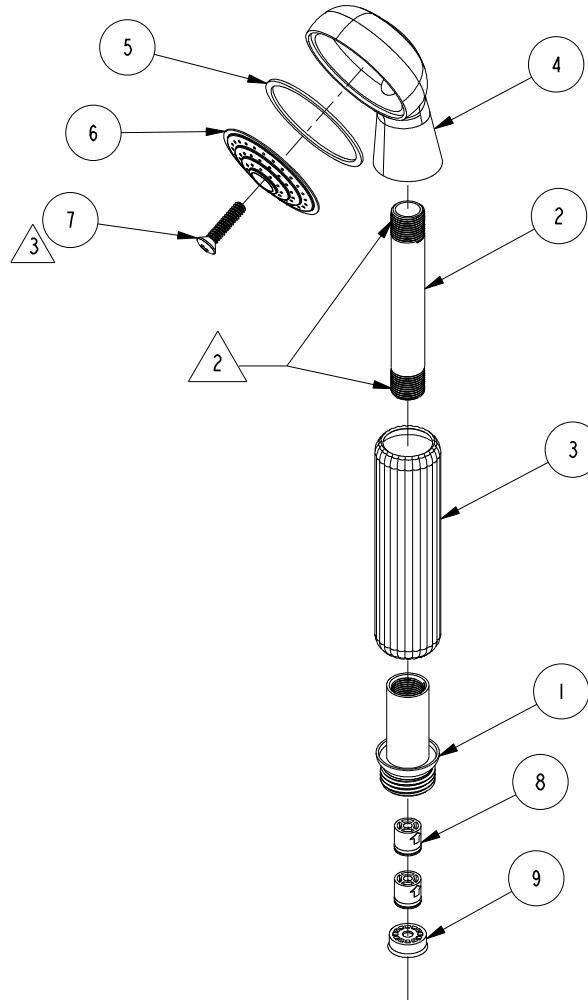


NOTES:

1. TO INSPECT ASSEMBLY, FOLLOW FIRST ARTICLE AND IN PROCESS INSPECTION SHEET.

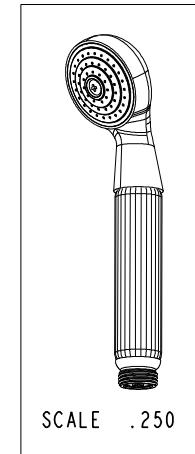
2. APPLY ADHESIVE LOCTITE 680.

3. APPLY TORQUE 4-6 LB-IN.



BILL OF MATERIAL (CURRENT LEVEL)

| ITEM | PT/ASSY | DESCRIPTION | TYPE | QTY. |
|------|---------|---|------|------|
| 1 | 50906 | ADAPTER HOSE | PART | 1 |
| 2 | 50907 | NIPPLE FOR HAND SHOWER | PART | 1 |
| 3 | 50277 | GROOVED HANDLE | PART | 1 |
| 4 | 50275 | BODY | PART | 1 |
| 5 | 91173 | WSHR, 1.64 ID X 1.84 OD X .042 THK, FLT, RUBBER | PART | 1 |
| 6 | 50276 | FACEPLATE (HND SHWR) | PART | 1 |
| 7 | 92253 | SCRW, 10-24 X .830 PHIL FLT HD BRASS | PART | 1 |
| 8 | 5-050 | CHECK VALVE, NEOPERL DW10, WHITE | PART | 2 |
| 9 | 12832 | FLOW REGULATOR, 1.8 GPM MAX | PART | 1 |



| - | F | EN-4300k | 11/03/20 | R.S. |
|------|-----|-------------|----------|----------|
| - | E | EN-3918 | 07/17/19 | C.G. |
| - | D | EN-3410 | 01/01/18 | C.G. |
| - | C | EN-1668 | 07/07/11 | - |
| - | B | EO-0869 | 08/15/07 | - |
| ZONE | REV | DESCRIPTION | DATE | APPROVED |

COPYRIGHT 2005 BRASSTECH, INC. THESE DRAWINGS AND THE DESIGNS DEPICTED HEREIN ARE THE PROPRIETARY PROPERTY OF BRASSTECH. ANY USE OR REPRODUCTION IS SUBJECT TO THE EXPRESS APPROVAL OF BRASSTECH. UNAUTHORIZED USE IS STRICTLY PROHIBITED. ALL RIGHTS RESERVED.

| | | | |
|-------------------|----------------------------------|-------------|---------|
| TESTING | - | - | - |
| ASSEMBLY | - | - | - |
| PLATING | - | - | - |
| POLISHING | - | NEXT ASSY | USED ON |
| MACHINING | - | APPLICATION | |
| TOOLING FIXTURE # | REMOVE ALL BURRS AND SHARP EDGES | | |

UNITS ARE: INCHES [MM]
TOLERANCES ARE:
FRACTIONS DECIMALS ANGLES
±1/16" .X ±.1 [2.5] ±1°
.XX ±.06 [1.5]

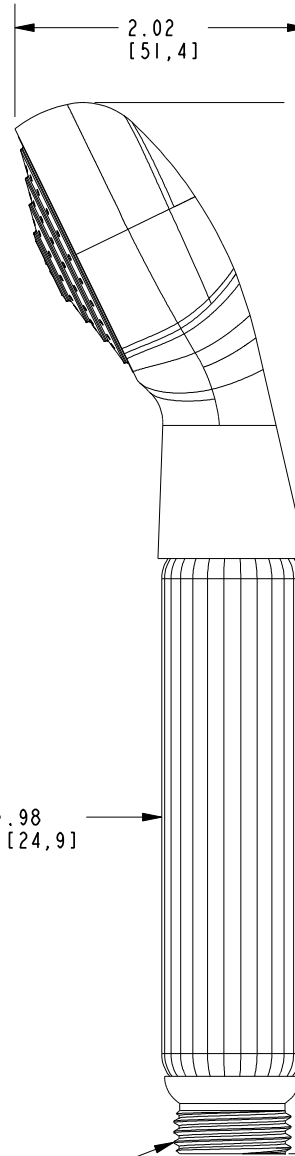
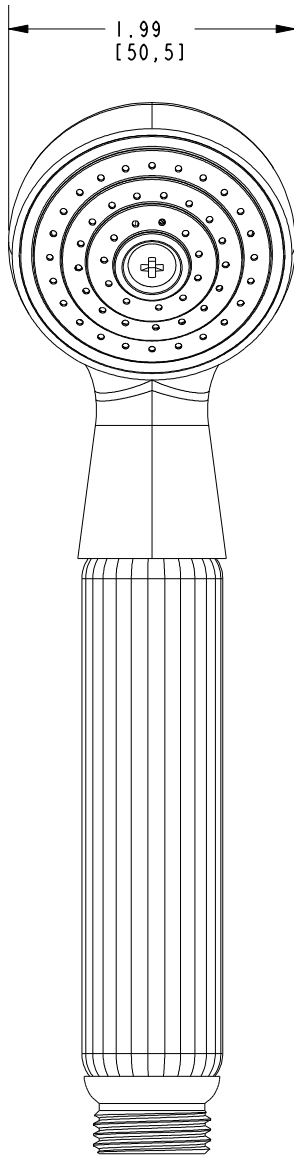
(X.XXX) DENOTES CRITICAL DIMS.
ALL THREADS ARE CRITICAL

| | | |
|----------|--------|----------|
| DRAWN | JINSON | 01/01/18 |
| CHECKED | C.G. | 01/01/18 |
| APPROVED | C.G. | 01/01/18 |

BRASSTECH 2001 CARNEGIE AVE.
INCORPORATED SANTA ANA, CA 92705
(949) 417-5207

HAND SHOWER WITH GROOVE

| | | | |
|---------|------|------|---|
| DWG NO. | 280 | REV | F |
| SCALE | .350 | REF. | - |
| SHEET | 1 | OF | 2 |



Ø .98
[24,9]

3.60
[91,3]

7.30
[185,5]

1/2 NPSM

BRASSTECH

2001 CARNEGIE AVE.
SANTA ANA, CA 92705
(949) 417-5207

INCORPORATED

DWG NO.

280

REV

F

SCALE .750

REF. -

SHEET 2 OF 2