

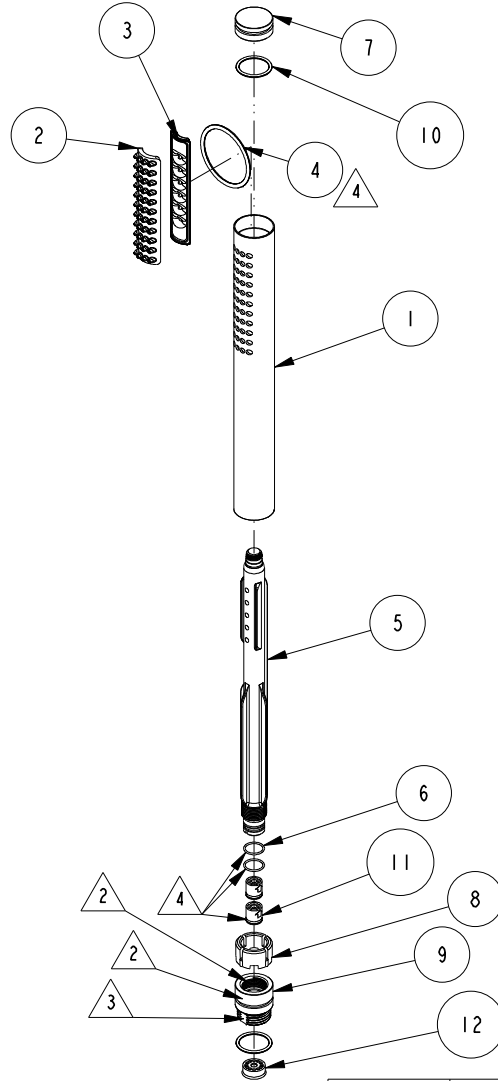
NOTES:

1. TO INSPECT ASSEMBLY, FOLLOW FIRST ARTICLE AND IN PROCESS INSPECTION SHEET.

2. APPLY 3M SCOTCH-WELD DP-100NS

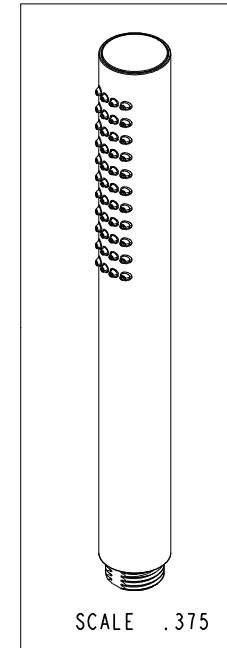
3. APPLY TORQUE 7 IN. LBS.

4. APPLY DOW CORNING 111



BILL OF MATERIAL (CURRENT LEVEL)

ITEM	PT/ASSY	DESCRIPTION	TYPE	QTY.
1	12806	HANDSHOWER TUBE, ROUND	PART	1
2	12808	MEMBRANE, ROUND	PART	1
3	13049	SPACER, ROUND	PART	1
4	91256	O-RING, #2-128, EPDM, 65-75 DURO	PART	1
5	12805	WATERWAY	PART	1
6	91725	O-RING, 1 X 11MM ID, EPDM, 65-75 DURO	PART	2
7	12807	CAP INSERT, ROUND	PART	1
8	91739	END INSERT, ROUND	PART	1
9	12804	ADAPTER, ROUND	PART	1
10	91022	O-RING, #2- 018, EPDM, 65-75 DURO, NSF 61	PART	2
11	5-050	CHECK VALVE, NEOPERL DW10, WHITE	PART	2
12	12832	FLOW REGULATOR, 1.8 GPM MAX	PART	1



-	H	EN-4300k	11/03/20	R.S.
-	G	EN-4090	01/27/20	C.G.
-	F	EN-3722	02/08/19	C.G.
-	E	EN-3636-1	01/11/18	J.M.
-	D	EN-3779	01/03/18	J.M.
-	C	EN-3607	05/14/18	J.M.
-	B	EN-3410	01/02/18	C.G.
-	A	EN-3484	12/04/17	J.M.
-	-	EN-3365	08/10/17	J.M.
ZONE	REV	DESCRIPTION	DATE	APPROVED

COPYRIGHT 2005 BRASSTECH, INC. THESE DRAWINGS AND THE DESIGNS DEPICTED HEREIN ARE THE PROPRIETARY PROPERTY OF BRASSTECH. ANY USE OR REPRODUCTION IS SUBJECT TO THE EXPRESS APPROVAL OF BRASSTECH. UNAUTHORIZED USE IS STRICTLY PROHIBITED. ALL RIGHTS RESERVED.

TESTING	-	-	-
ASSEMBLY	-	-	-
PLATING	-	-	-
POLISHING	-	NEXT ASSY	USED ON
MACHINING	-	APPLICATION	
TOOLING FIXTURE #	REMOVE ALL BURRS AND SHARP EDGES		

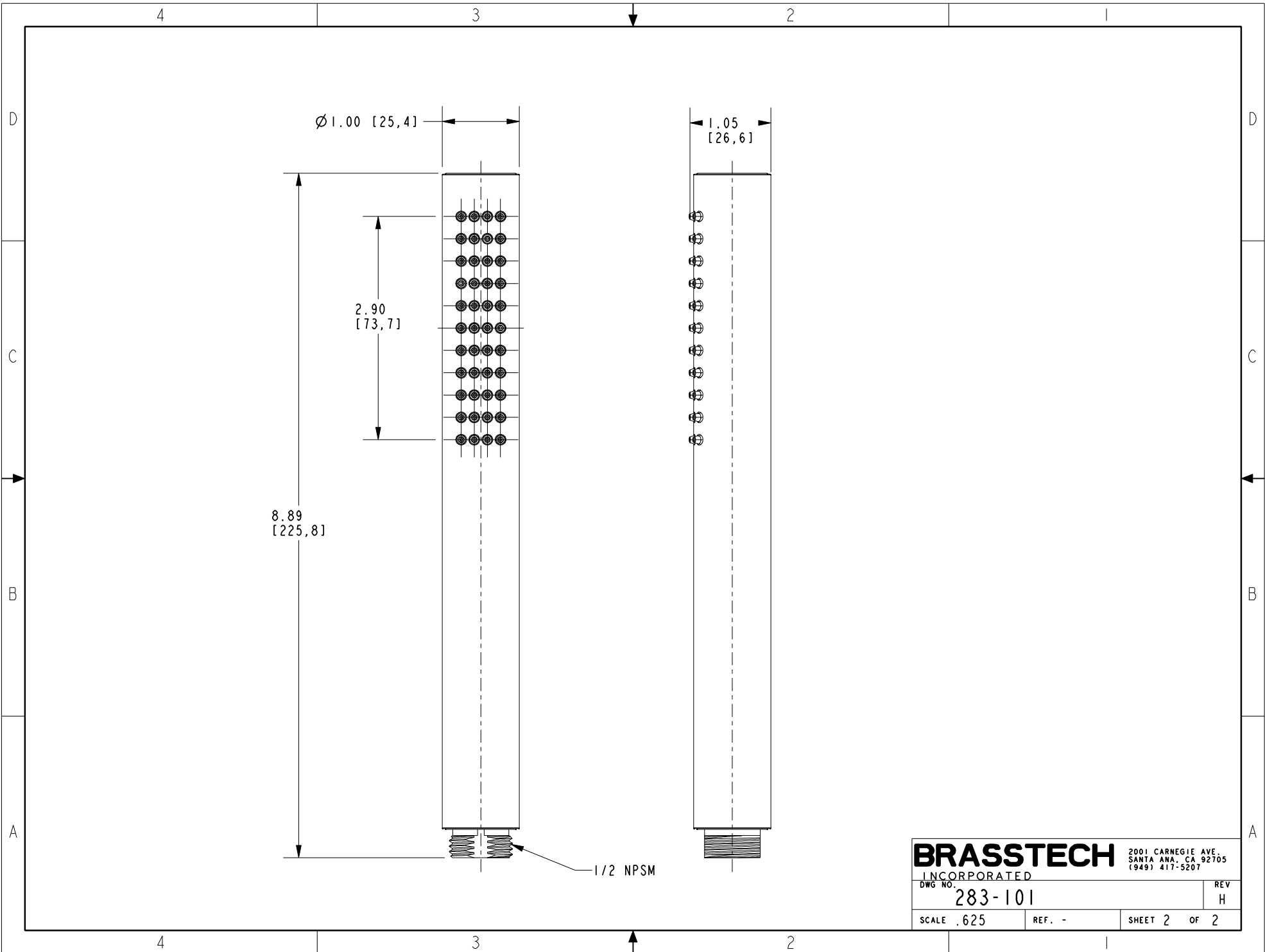
UNITS ARE: INCHES [MM]			
TOLERANCES ARE:			
FRACTIONS	DECIMALS	ANGLES	
±1/16"	.X ±.1 [2.5]	±1°	
	.XX ±.06 [1.5]		
(X.XXX) DENOTES CRITICAL DIMS. ALL THREADS ARE CRITICAL			
DRAWN	JIMSON	02/08/19	
CHECKED	C.G.	02/08/19	
APPROVED	C.G.	02/08/19	

BRASSTECH 2001 CARNEGIE AVE. SANTA ANA, CA 92705 (949) 417-5207
INCORPORATED

ROUND WAND HANDSHOWER

DWG NO. **283-101** REV **H**

SCALE .212 REF. - SHEET 1 OF 2



BRASSTECH 2001 CARNEGIE AVE.
 INCORPORATED SANTA ANA, CA 92705
 (949) 417-5207

DWG NO.	283-101	REV	H
SCALE	.625	REF.	-
		SHEET	2 OF 2