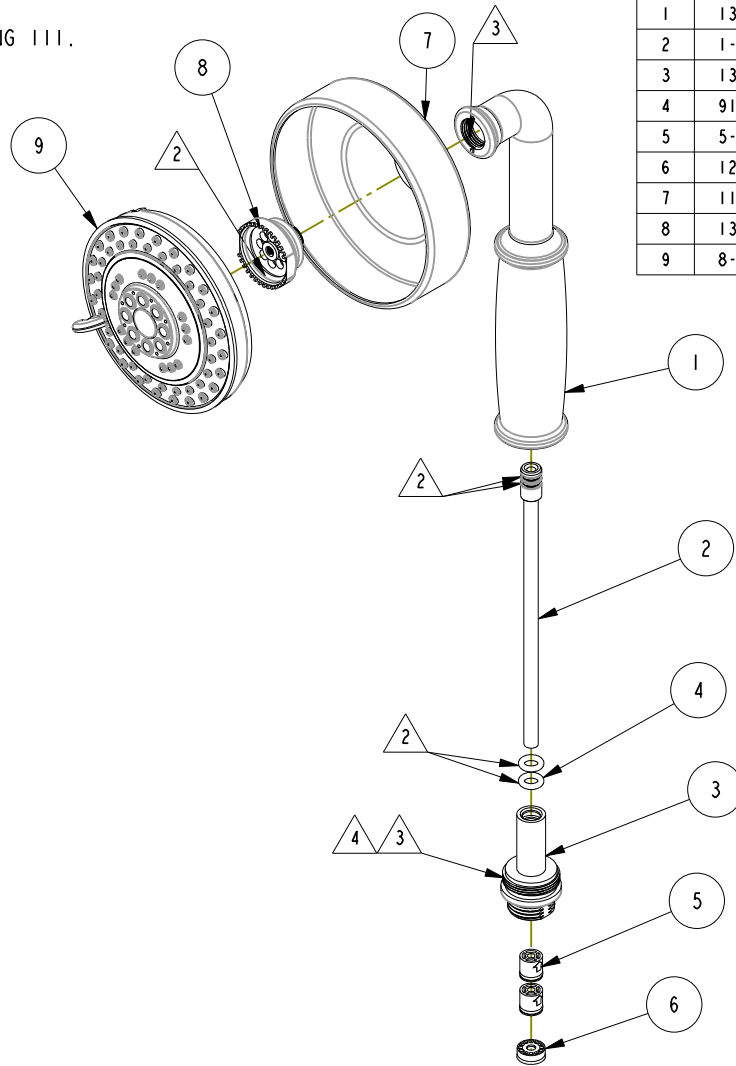


NOTES:

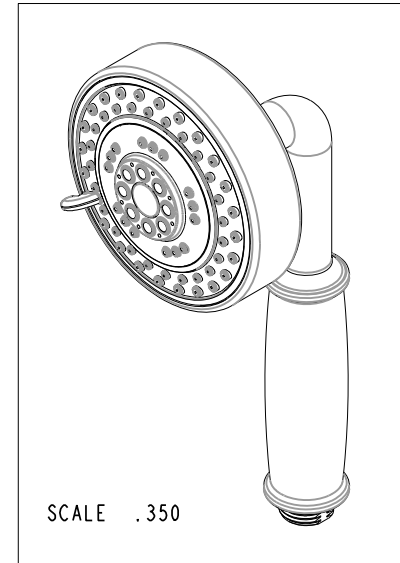
1. TO INSPECT ASSEMBLY, FOLLOW FIRST ARTICLE AND IN PROCESS INSPECTION SHEET.

- 2. APPLY LIGHT FILM OF DOW CORNING 111.
- 3. APPLY ADHESIVE LOCTITE 680.
- 4. APPLY TORQUE 10-15 IN LBS



BILL OF MATERIAL (CURRENT LEVEL)

ITEM	PT/ASSY	DESCRIPTION	TYPE	QTY.
1	13331	HAND SHOWER BODY	PART	1
2	1-446	HANDSHOWER INTERNAL TUBE	ASSEMBLY	1
3	13332	HANDSHOWER END NUT	PART	1
4	91786	O-RING, #2- 108, EPDM, 65-75 DURO, NSF 61	PART	2
5	5-050	CHECK VALVE, NEOPERL DW10, WHITE	PART	2
6	12833	FLOW REGULATOR, 1.8 GPM MAX	PART	1
7	11375	SHOWER HEAD SHELL	PART	1
8	13446	SHOWER HEAD ADAPTER	PART	1
9	8-083	SHOWER ENGINE	PART	1



-	H	EN-4172B	11/03/20	C.G.
-	G	EN-3992a	07/15/20	J.M.
-	F	EN-3610	5/18/18	J.A.
-	E	EN-3553	03/22/18	V.V.
-	D	EN-3410	01/01/18	C.G.
-	C	EN-2768	06/19/14	-
-	B	EN-1668	04/05/11	-
-	A	EN-1265	10/22/09	-
-	-	ECN-0940	02/11/08	-
ZONE	REV	DESCRIPTION	DATE	APPROVED

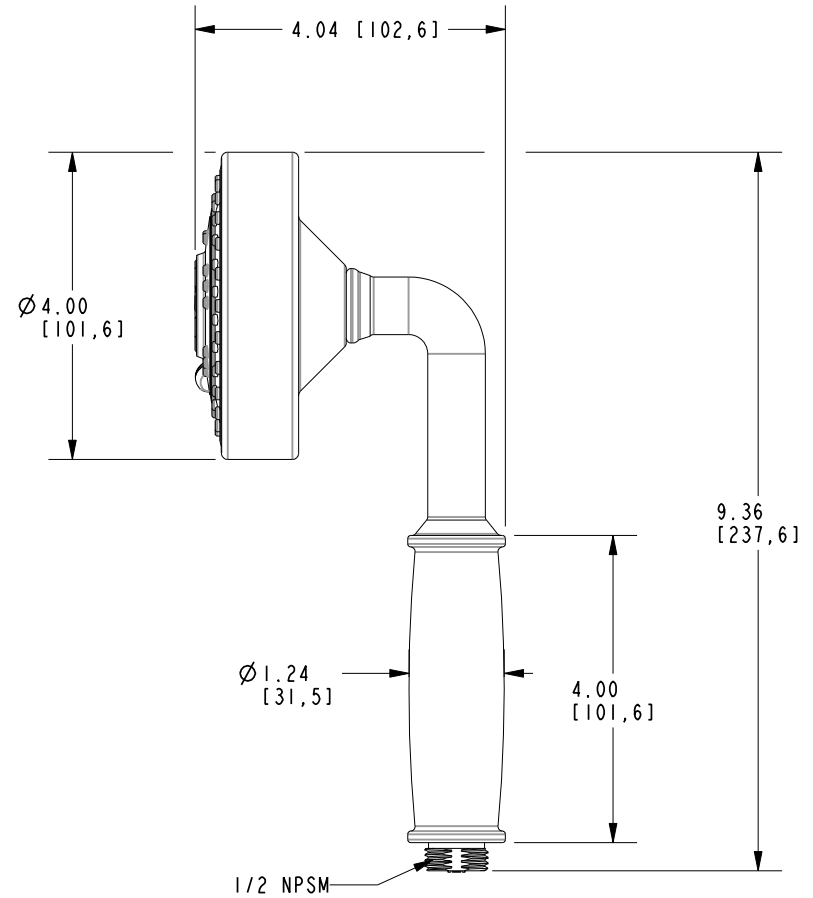
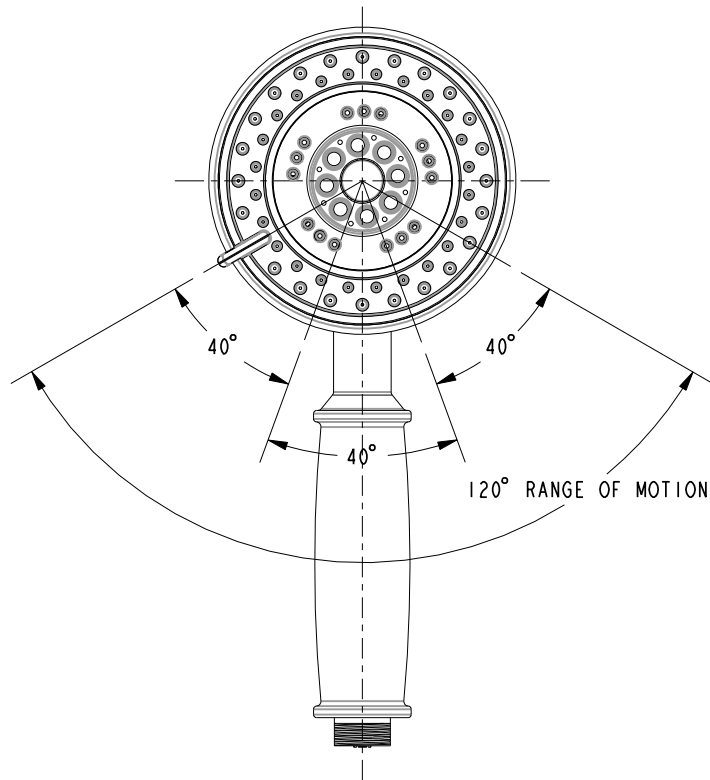
COPYRIGHT 2005 BRASSTECH, INC. THESE DRAWINGS AND THE DESIGNS DEPICTED HEREIN ARE THE PROPRIETARY PROPERTY OF BRASSTECH. ANY USE OR REPRODUCTION IS SUBJECT TO THE EXPRESS APPROVAL OF BRASSTECH. UNAUTHORIZED USE IS STRICTLY PROHIBITED. ALL RIGHTS RESERVED.

TESTING	-	-	-
ASSEMBLY	-	-	-
PLATING	-	-	-
POLISHING	-	NEXT ASSY	USED ON
MACHINING	-	APPLICATION	
TOOLING FIXTURE #	-	REMOVE ALL BURRS AND SHARP EDGES	

UNITS ARE: INCHES [MM]	
TOLERANCES ARE:	
FRACTIONS DECIMALS	ANGLES
±1/16"	±1°
.X ±.1 [2.5]	
.XX ±.06 [1.5]	
(X.XXX) DENOTES CRITICAL DIMS. ALL THREADS ARE CRITICAL	
DRAWN	JINSON 01/01/18
CHECKED	C.G. 01/01/18
APPROVED	C.G. 01/01/18

BRASSTECH		2001 CARNEGIE AVE. SANTA ANA, CA 92705 (949) 417-5207	
INCORPORATED			
HAND SHOWER - CONTEMPORARY			
DWG NO.		REV	
283-3		H	
SCALE .300	REF. -	SHEET 1	OF 2

NOTE:
ASSEMBLE ENGINE IN THIS POSITION.



BRASSTECH		2001 CARNEGIE AVE. SANTA ANA, CA 92705 (949) 417-5207	
INCORPORATED			
DWG NO.	283-3	REV	H
SCALE .400	REF. -	SHEET 2 OF 2	