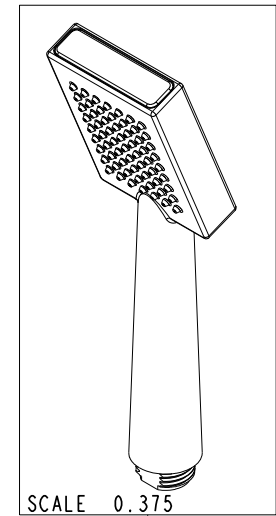
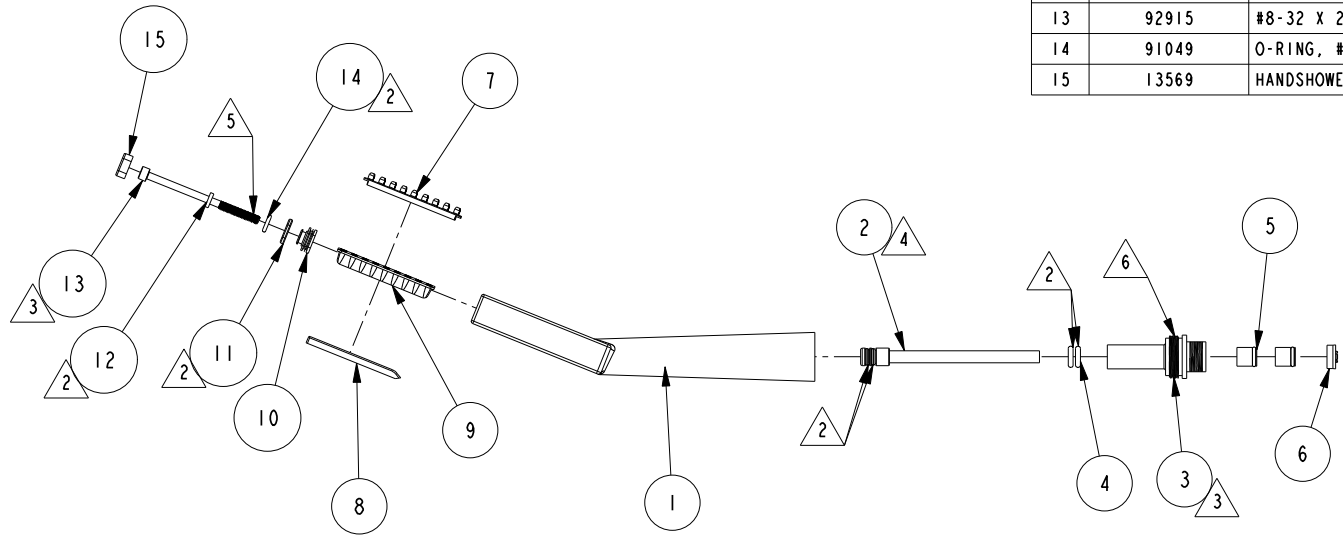


NOTES:

1. TO INSPECT ASSEMBLY, FOLLOW FIRST ARTICLE AND IN PROCESS INSPECTION SHEET.

- 2. APPLY THIN COAT OF SILICONE GREASE TO O-RINGS
- 3. APPLY TORQUE: 8-10 LB-IN.
- 4. CUT TO OVEALL LENGTH OF 3.55"
- 5. APPLY LOCTITE 242
- 6. APPLY LOCTITE 680



BILL OF MATERIAL (CURRENT LEVEL)

ITEM	PT/ASSY	DESCRIPTION	TYPE	QTY.
1	13567	HAND SHOWER BODY	PART	1
2	1-446	HANDSHOWER INTERNAL TUBE	ASSEMBLY	1
3	13572	HANDSHOWER END NUT	PART	1
4	91786	O-RING, #2- 108, EPDM, 65-75 DURO, NSF 61	PART	2
5	5-050	CHECK VALVE, NEOPERL DW10, WHITE	PART	2
6	12833	FLOW REGULATOR, 1.8 GPM MAX	PART	1
7	13570	JET SPRAY MEMBRANE	PART	1
8	13573	SHUTTLE	PART	1
9	13566	MEMBRANE BACKER	PART	1
10	13568	HANDSHOWER SEALING CAP	PART	1
11	13571	HANDSHOWER CAP GASKET	PART	1
12	91798	SEALING WASHER	PART	2
13	92915	#8-32 X 2.5 HEX HD SS	PART	2
14	91049	O-RING, #2- 010, EPDM, 65-75 DURO, NSF 61	PART	1
15	13569	HANDSHOWER DECORATIVE CAP	PART	1

-	K	EN-4269-1	10/21/22	J.M.
-	J	EN-4300k	11/03/20	R.S.
-	H	EN-3410	01/02/18	C.G.
-	G	EN-3052	06/06/16	R.S
-	F	EN-2787	01/28/15	-
-	E	EN-2145	04/20/12	-
-	D	EN-1878	09/16/11	-
-	C	EN-1735	06/10/11	-
-	B	EO-0927	12/21/07	-
-	A	EO-0579	10/11/05	-

COPYRIGHT 2005 BRASSTECH, INC. THESE DRAWINGS AND THE DESIGNS DEPICTED HEREIN ARE THE PROPRIETARY PROPERTY OF BRASSTECH. ANY USE OR REPRODUCTION IS SUBJECT TO THE EXPRESS APPROVAL OF BRASSTECH. UNAUTHORIZED USE IS STRICTLY PROHIBITED. ALL RIGHTS RESERVED.

TESTING	-	-	-
ASSEMBLY	-	-	-
PLATING	-	2567	2567
POLISHING	-	NEXT ASSY	USED ON
MACHINING	-	APPLICATION	
TOOLING FIXTURE #	-	REMOVE ALL BURRS AND SHARP EDGES	

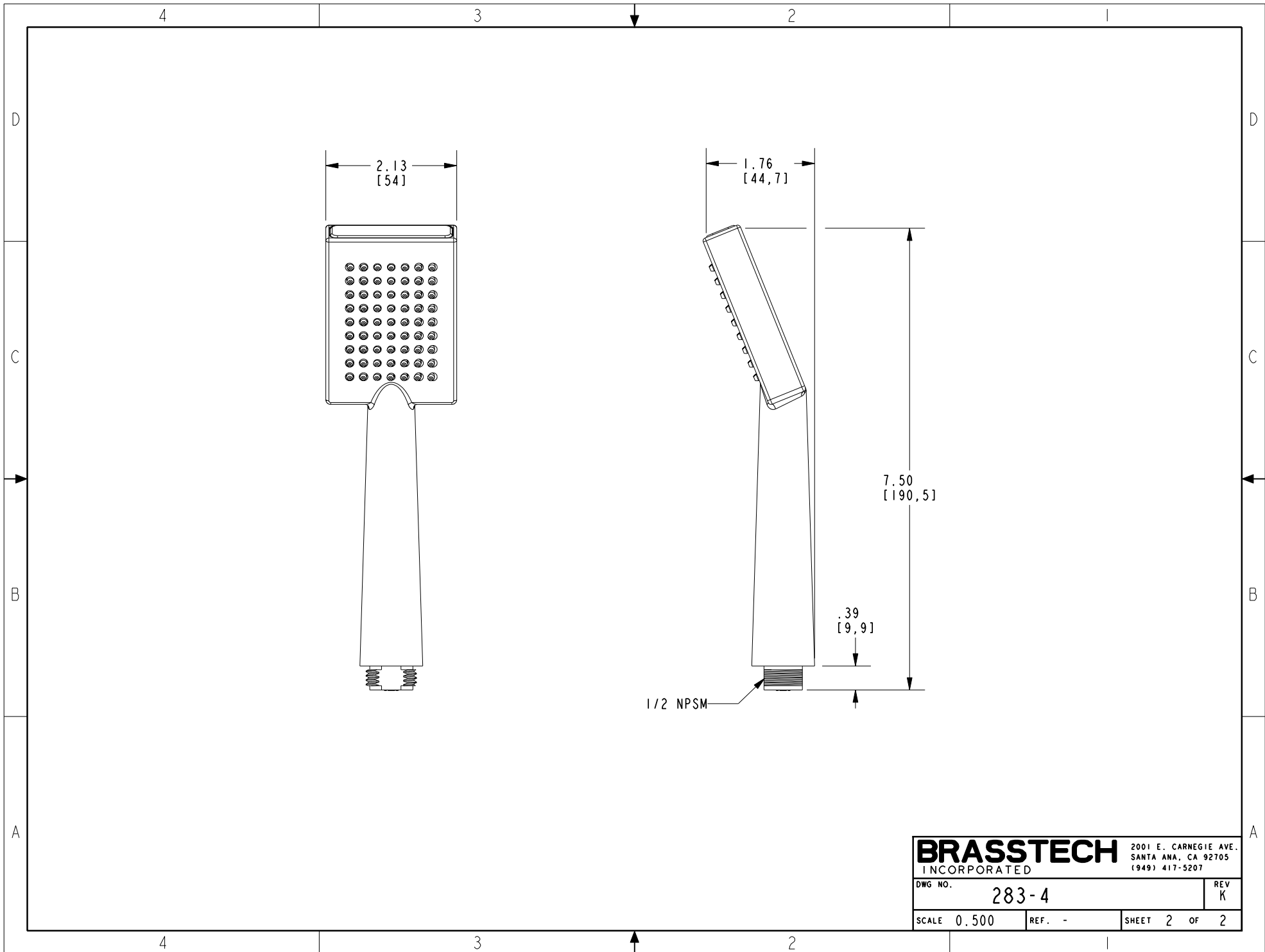
UNITS ARE: INCHES [MM]	
TOLERANCES ARE:	
FRACTIONS DECIMALS	ANGLES
±1/16"	±1°
.X ±.1 [2.5]	
.XX ±.06 [1.5]	
(X.XXX) DENOTES CRITICAL DIMS. ALL THREADS ARE CRITICAL	
DRAWN	G.B. 10/21/22
CHECKED	J.M. 10/21/22
APPROVED	J.M. 10/21/22

BRASSTECH 2001 CARNEGIE AVE. SANTA ANA, CA 92705 (949) 417-5207
INCORPORATED

HANDSPRAY ASSEMBLY

DWG NO. **283-4** REV **K**

SCALE .312 REF. - SHEET 1 OF 2



2.13
[54]

1.76
[44, 7]

7.50
[190, 5]

.39
[9, 9]

1/2 NPSM

BRASSTECH		2001 E. CARNEGIE AVE. SANTA ANA, CA 92705 (949) 417-5207	
INCORPORATED			
DWG NO.	283-4		REV K
SCALE 0.500	REF. -	SHEET 2 OF 2	