

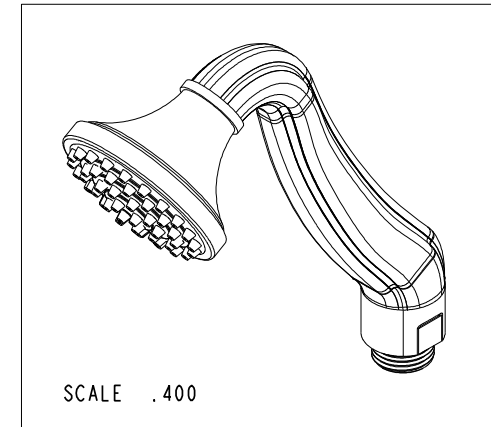
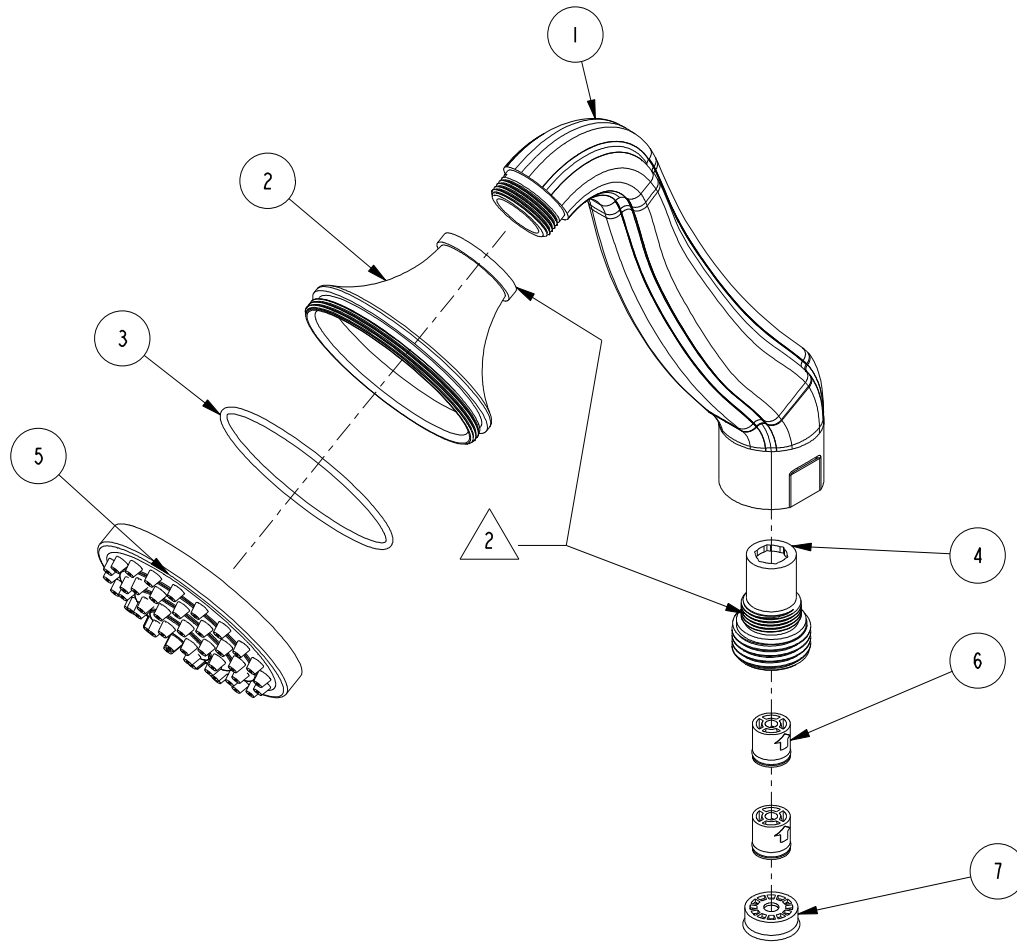
NOTES:

1. TO INSPECT ASSEMBLY, FOLLOW FIRST ARTICLE AND IN PROCESS INSPECTION SHEET.

2. APPLY ADHESIVE LOCTITE 680.

BILL OF MATERIAL (CURRENT LEVEL)

ITEM	PT/ASSY	DESCRIPTION	TYPE	QTY.
1	80752	HANDSHOWER BODY	PART	1
2	80015	HANDSHOWER SHELL	PART	1
3	91386	O-RING, #2-034, EPDM, 65-75 DURO	PART	1
4	80753	END NUT	PART	1
5	8-052	FACE PLATE / JET ASM	ASSEMBLY	1
6	5-050	CHECK VALVE, NEOPERL DW10, WHITE	PART	2
7	12832	FLOW REGULATOR, 1.8 GPM MAX	PART	1



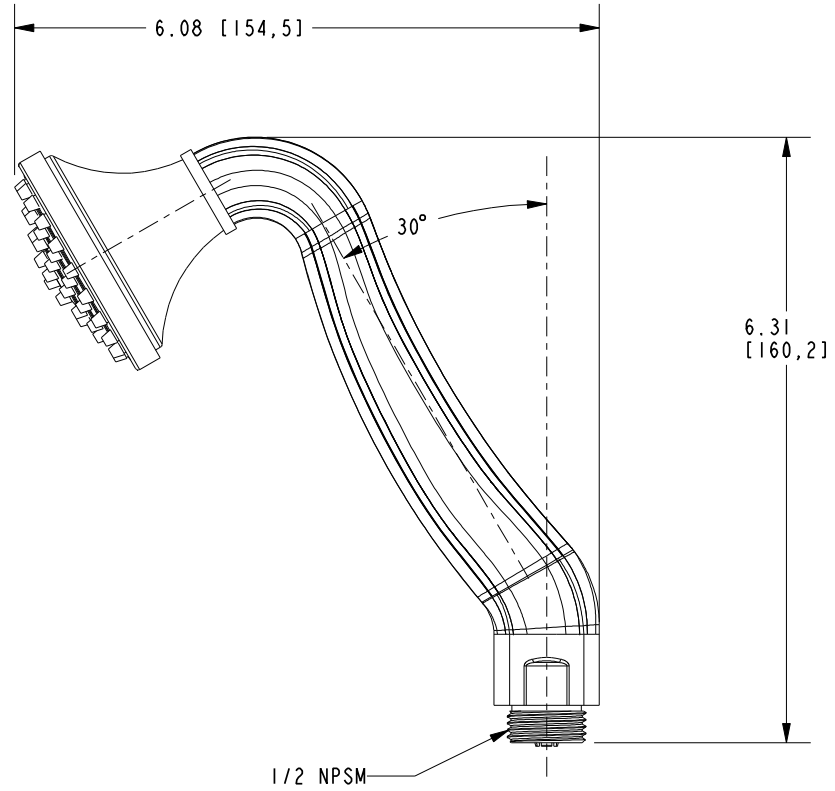
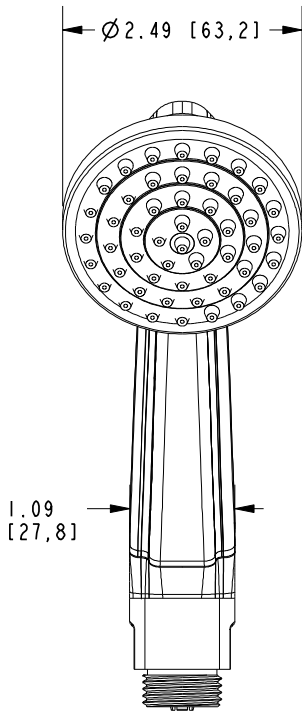
-	D	EN-4300k	11/05/20	R. S.
-	C	EN-3410	01/02/18	C. G.
-	B	EN-3115	08/16/16	J. M.
-	A	EN-1878	09/16/11	-
-	-	EN-1735	06/10/11	-
ZONE	REV	DESCRIPTION	DATE	APPROVED

COPYRIGHT 2005 BRASSTECH, INC. THESE DRAWINGS AND THE DESIGNS DEPICTED HEREIN ARE THE PROPRIETARY PROPERTY OF BRASSTECH. ANY USE OR REPRODUCTION IS SUBJECT TO THE EXPRESS APPROVAL OF BRASSTECH. UNAUTHORIZED USE IS STRICTLY PROHIBITED. ALL RIGHTS RESERVED.

TESTING	-	-	-
ASSEMBLY	-	-	-
PLATING	-	-	-
POLISHING	-	NEXT ASSY	USED ON
MACHINING	-	APPLICATION	
TOOLING FIXTURE #	REMOVE ALL BURRS AND SHARP EDGES		

UNITS ARE: INCHES [MM]		
TOLERANCES ARE:		
FRACTIONS	DECIMALS	ANGLES
±1/16"	.X ±.1 [2.5]	±1°
	.XX ±.06 [1.5]	
(X.XXX) DENOTES CRITICAL DIMS.		
ALL THREADS ARE CRITICAL		
DRAWN	JIMSON	01/02/18
CHECKED	C.G.	01/02/18
APPROVED	C.G.	01/02/18

BRASSTECH		2001 CARNEGIE AVE. SANTA ANA, CA 92705 (949) 417-5207	
INCORPORATED			
HANDSPRAY ASSEMBLY			
DWG NO. 283-5		REV D	
SCALE .500	REF. -	SHEET 1	OF 2



BRASSTECH

2001 CARNEGIE AVE.
SANTA ANA, CA 92705
(949) 417-5207

INCORPORATED

DWG NO.

283-5

REV

D

SCALE .500

REF. -

SHEET 2 OF 2