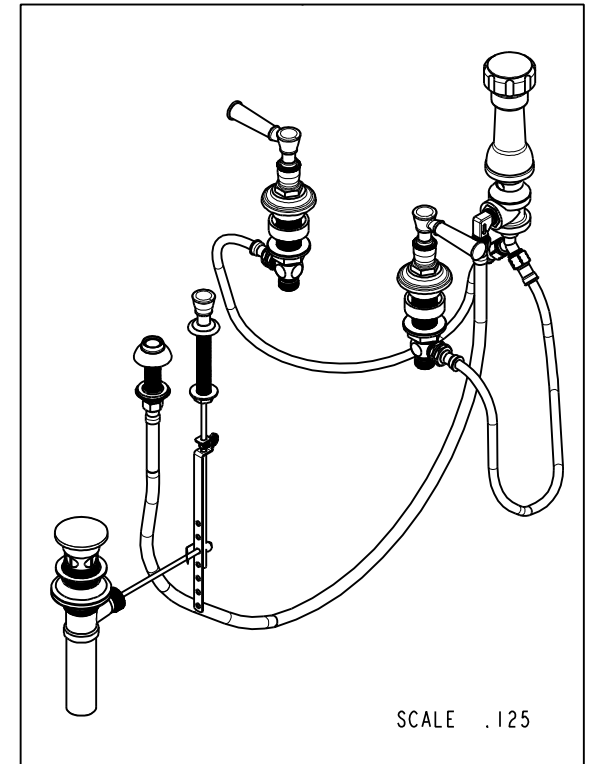
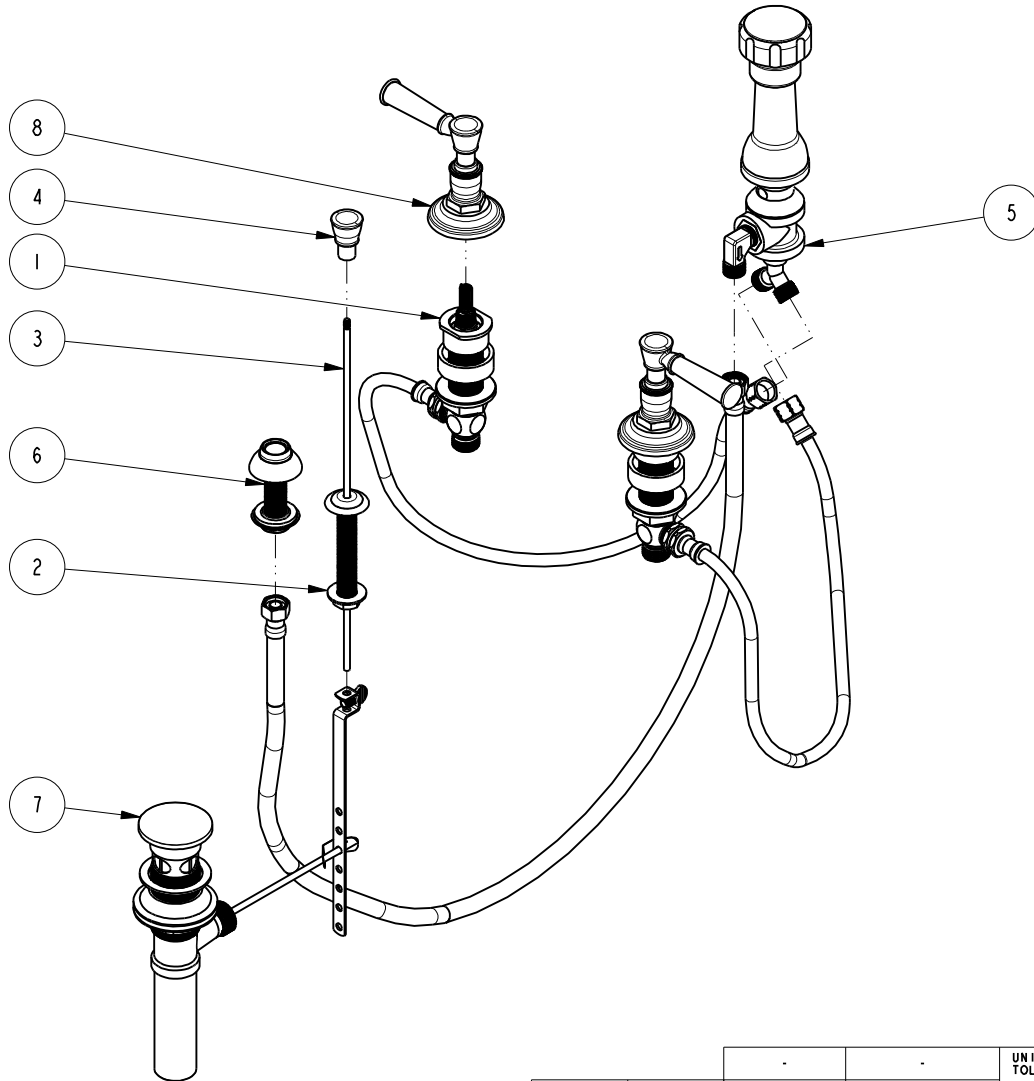


NOTES:

1. TO INSPECT ASSEMBLY, FOLLOW FIRST ARTICLE AND IN PROCESS INSPECTION SHEET.

BILL OF MATERIAL (CURRENT LEVEL)

| ITEM | PT/ASSY | DESCRIPTION | TYPE | QTY. |
|------|---------|---------------------------|----------|------|
| 1 | 1-667 | VALVE KIT ASSEMBLY | ASSEMBLY | 1 |
| 2 | 2-159 | POP-UP ROD GUIDE ASSEMBLY | ASSEMBLY | 1 |
| 3 | 10288 | 3/16" POP UP ROD | PART | 1 |
| 4 | 12372 | BONNET | PART | 1 |
| 5 | 2-235 | BIDET DIVERTER / V. BRE | ASSEMBLY | 1 |
| 6 | 2-236 | DOUCHE SPRAY ASSEMBLY | ASSEMBLY | 1 |
| 7 | 325 | POP UP ASSEMBLY | ASSEMBLY | 1 |
| 8 | 3-561 | LEVER HANDLE W/ESC. | ASSEMBLY | 2 |



UNITS ARE: INCHES [MM]
 TOLERANCES ARE:
 FRACTIONS DECIMALS ANGLES
 $\pm 1/16"$.X $\pm .1$ [2,5] $\pm ^\circ$
 $.XX \pm .06$ [1,5]

(X.XXX) DENOTES CRITICAL DIMS.
 ALL THREADS ARE CRITICAL

DRAWN JINSON 01/08/21
 CHECKED R.S. 01/08/21
 APPROVED R.S. 01/08/21

BRASSTECH
 INCORPORATED

2001 CARNEGIE AVE.
 SANTA ANA, CA 92705
 (949) 417-5207

**BOTTOM SPRAY BIDET, LEVER
 HANDLE**

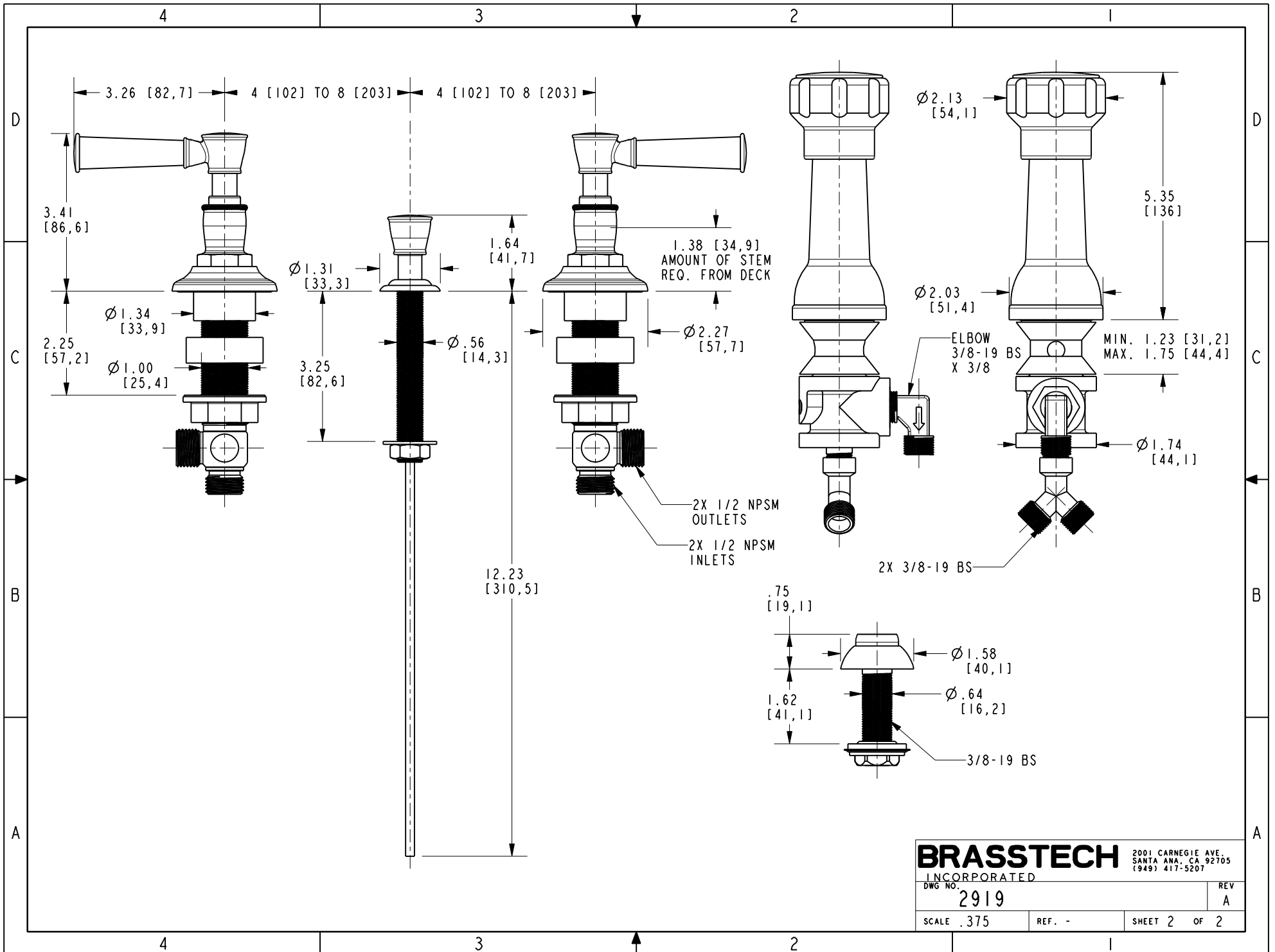
DWG NO. **2919** REV **A**

SCALE .175 REF. - SHEET 1 OF 2

| | | | |
|-------------------|----------------------------------|-------------|---------|
| TESTING | - | - | - |
| ASSEMBLY | - | - | - |
| PLATING | - | - | - |
| POLISHING | - | NEXT ASSY | USED ON |
| MACHINING | - | APPLICATION | |
| TOOLING FIXTURE # | REMOVE ALL BURRS AND SHARP EDGES | | |

COPYRIGHT 2005 BRASSTECH, INC.
 THESE DRAWINGS AND THE DESIGNS
 DEPICTED HEREIN ARE THE PROPRIETARY
 PROPERTY OF BRASSTECH. ANY USE
 OR REPRODUCTION IS SUBJECT TO
 THE EXPRESS APPROVAL OF BRASSTECH.
 UNAUTHORIZED USE IS STRICTLY
 PROHIBITED. ALL RIGHTS RESERVED.

| ZONE | REV | DESCRIPTION | DATE | APPROVED |
|------|-----|-------------|----------|----------|
| - | A | EN-4300c | 01/08/21 | R.S. |
| - | - | EN-2838c | 08/10/15 | J.M. |



| | | | |
|------------------|--------|---|--|
| BRASSTECH | | 2001 CARNEGIE AVE. SANTA ANA, CA 92705 (949) 417-5207 | |
| INCORPORATED | | | |
| DWG NO. 2919 | | REV A | |
| SCALE .375 | REF. - | SHEET 2 OF 2 | |