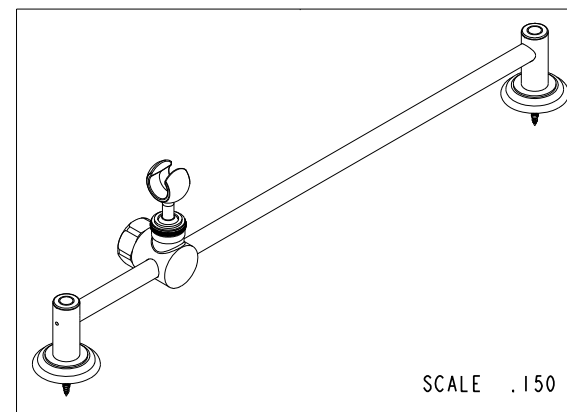
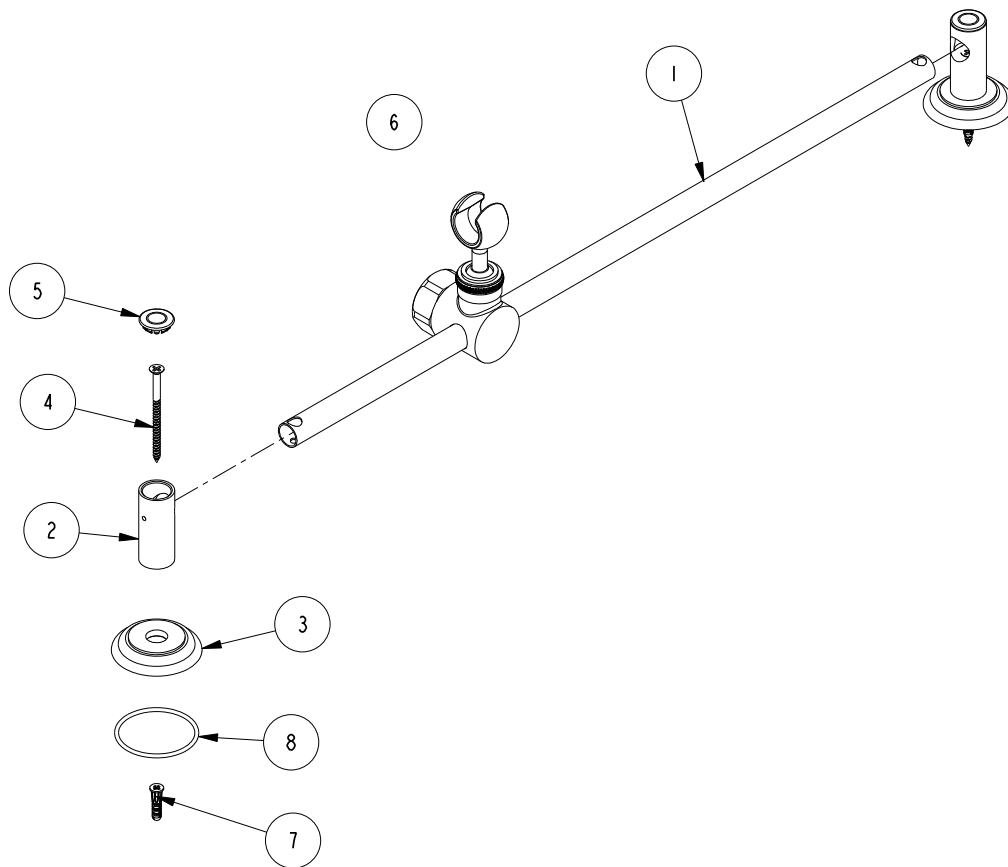


ITEM	PT/ASSY	DESCRIPTION	TYPE	QTY.
1	50310	SLIDE BAR TUBE	PART	1
2	50312	END POST	PART	2
3	10050	ESCUTCHEON WALL VALVE	PART	2
4	92071	SCRW, #10 X 3 PHL FLT HD SS	PART	2
5	50315	END CAP	PART	2
6	6-013	HANDSHWR HOLDER ASM	ASSEMBLY	1
7	91165	WALL ANCHOR PLASTIC	PART	2
8	91753	O-RING, # 2-136, EP, 50 DURO - GREY	PART	2



SCALE .150

COPYRIGHT 2005 BRASSTECH, INC. THESE DRAWINGS AND THE DESIGNS DEPICTED HEREIN ARE THE PROPRIETARY PROPERTY OF BRASSTECH. ANY USE OR REPRODUCTION IS SUBJECT TO THE EXPRESS APPROVAL OF BRASSTECH. UNAUTHORIZED USE IS STRICTLY PROHIBITED. ALL RIGHTS RESERVED.

BRASSTECH
INCORPORATED

2001 CARNEGIE AVE.
SANTA ANA, CA 92705
(949) 417-5207

HANDSHWR SLIDE BAR

ASSY. NO. 292

SCALE . 200

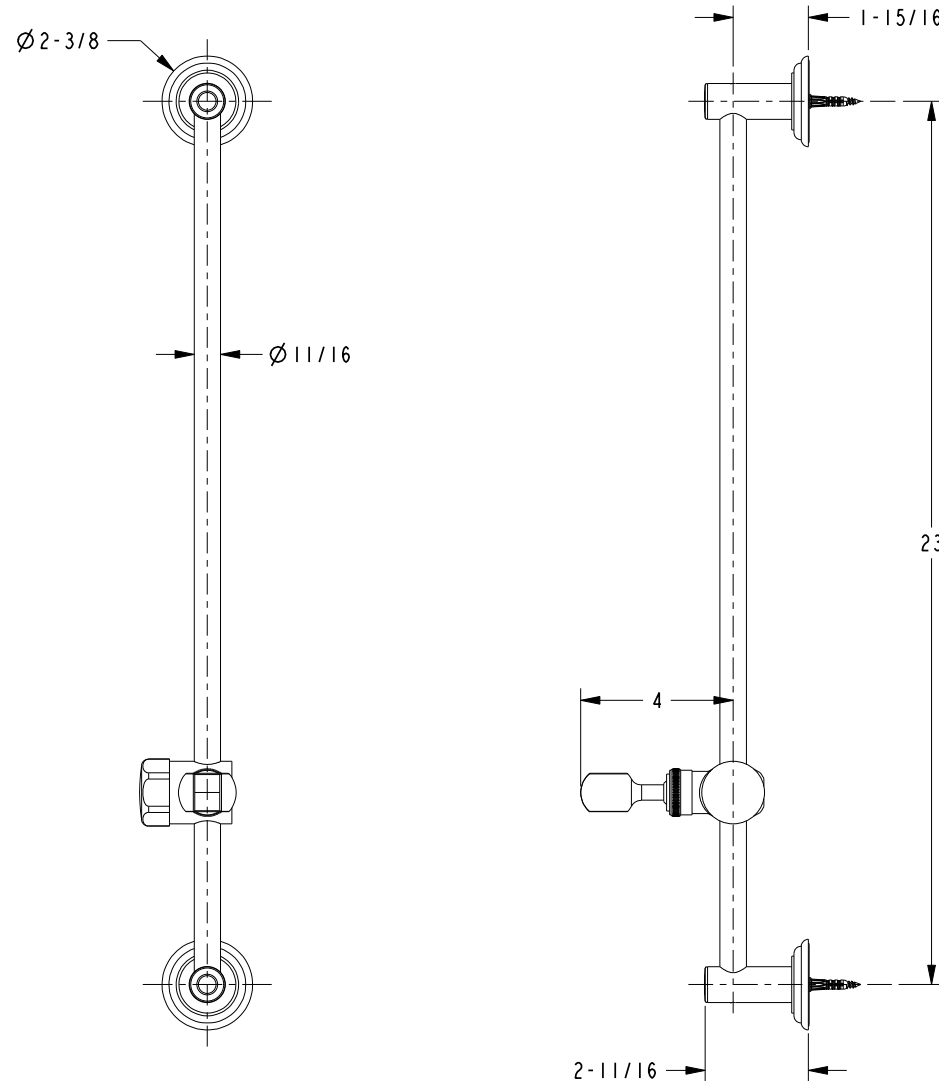
REF. -

REF. -	SHEET 1 OF 2
--------	--------------

E	EN-4945	01/30/25
D	EN-3942	09/25/19
C	EN-3722	09/25/19
B	EN-2398a	04/11/13
A	EO-0372	06/08/04
-	RELEASED	03/05/96

REV	REV DESC	DATE
-----	----------	------

SPECIFICATION DWG



DIMENSIONS ARE IN INCHES AND AN APPROXIMATION OF A TYPICAL INSTALLATION

COPYRIGHT 2005 BRASSTECH, INC. THESE DRAWINGS AND THE DESIGNS DEPICTED HEREIN ARE THE PROPRIETARY PROPERTY OF BRASSTECH. ANY USE OR REPRODUCTION IS SUBJECT TO THE EXPRESS APPROVAL OF BRASSTECH. UNAUTHORIZED USE IS STRICTLY PROHIBITED. ALL RIGHTS RESERVED.

BRASSTECH		2001 CARNEGIE AVE. SANTA ANA, CA 92705 (949) 417-5207	
INCORPORATED			
DWG NO.	292	REV E	
SCALE	.200	REF.	-
SHEET 2 OF 2			