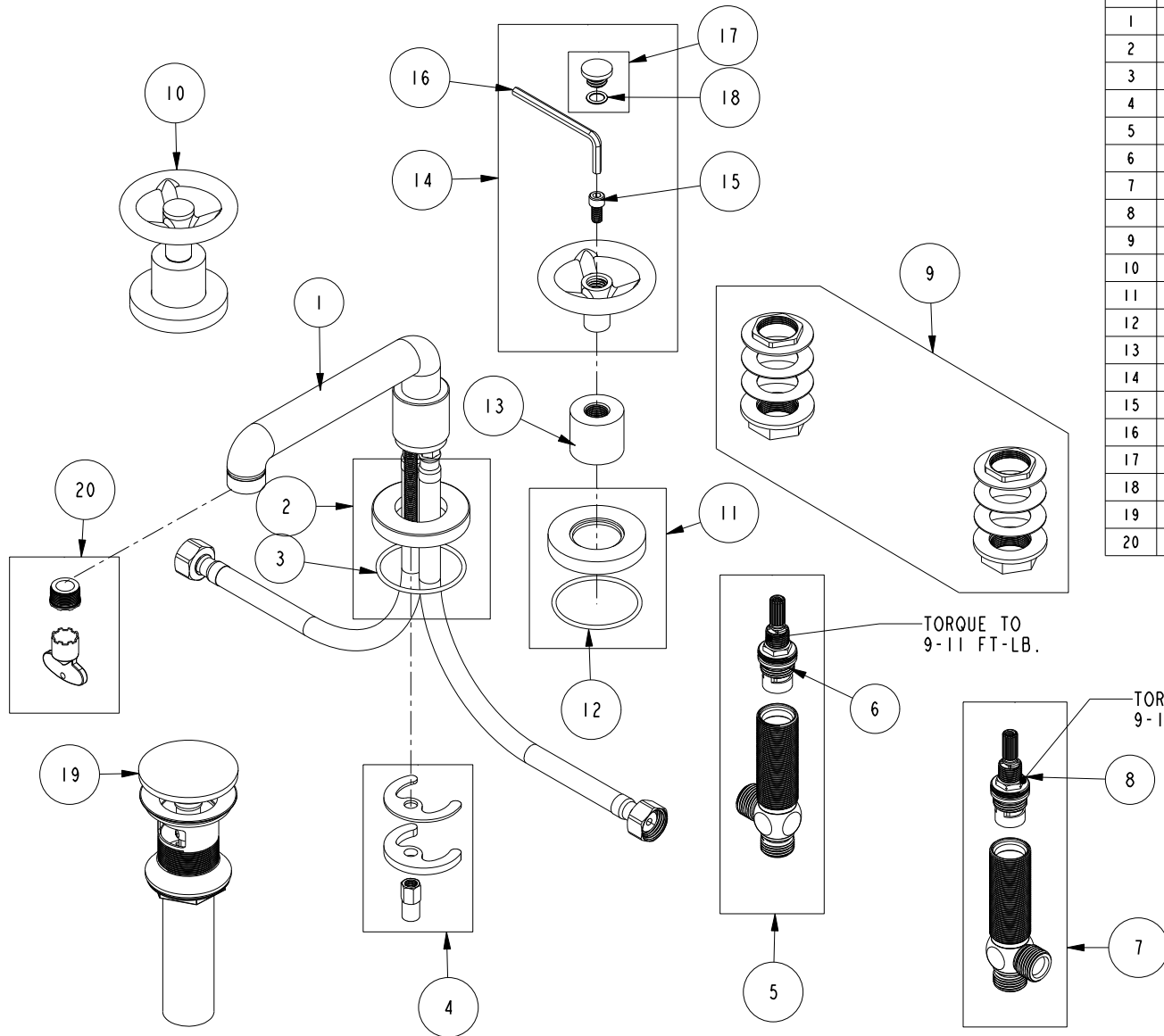


REPLACEMENT PARTS



ITEM	PT/ASSY	SPECIFY FINISH	DESCRIPTION
1	3-784	YES	W/S SPOUT ASM
2	20-526	YES	SPOUT BASE ASM
3	91753		O-RING, # 2-136, EP, 50 DURO - GREY
4	1-491		SPOUT MOUNTING KIT
5	1-527		W/S CART/BODY ASM (HOT)
6	1-002		W/S CARTRIDGE - HOT
7	1-526		W/S CART/BODY ASM (COLD)
8	1-001		W/S CARTRIDGE - COLD
9	1-027		WIDE SPREAD MOUNTING HARDWARE
10	3-570	YES	HANDLE/ ESC ASM
11	2-100	YES	ESCUTCHEON - ASSEMBLY
12	91753		O-RING, # 2-136, EP, 50 DURO - GREY
13	10620	YES	BONNET
14	20-143	YES	HANDLE ASM
15	92141		SCREW, CAP HD 1/4-20 X 1/2
16	92846		HEX KEY, 3/16" ALLOY STEEL
17	20-738	YES	HANDLE CAP ASM
18	91017		O-RING #2-012
19	330	YES	DRAIN, PUSH DOWN, W/ OVERFLOW
20	1-492		AERATOR 1.2 GPM WITH KEY

**WIDESPREAD FAUCET
2930**

REV B EN-4734 11/08/23 APPROVED RS

NEWPORT BRASS.

t: 949.417.5207 | www.newportbrass.com