
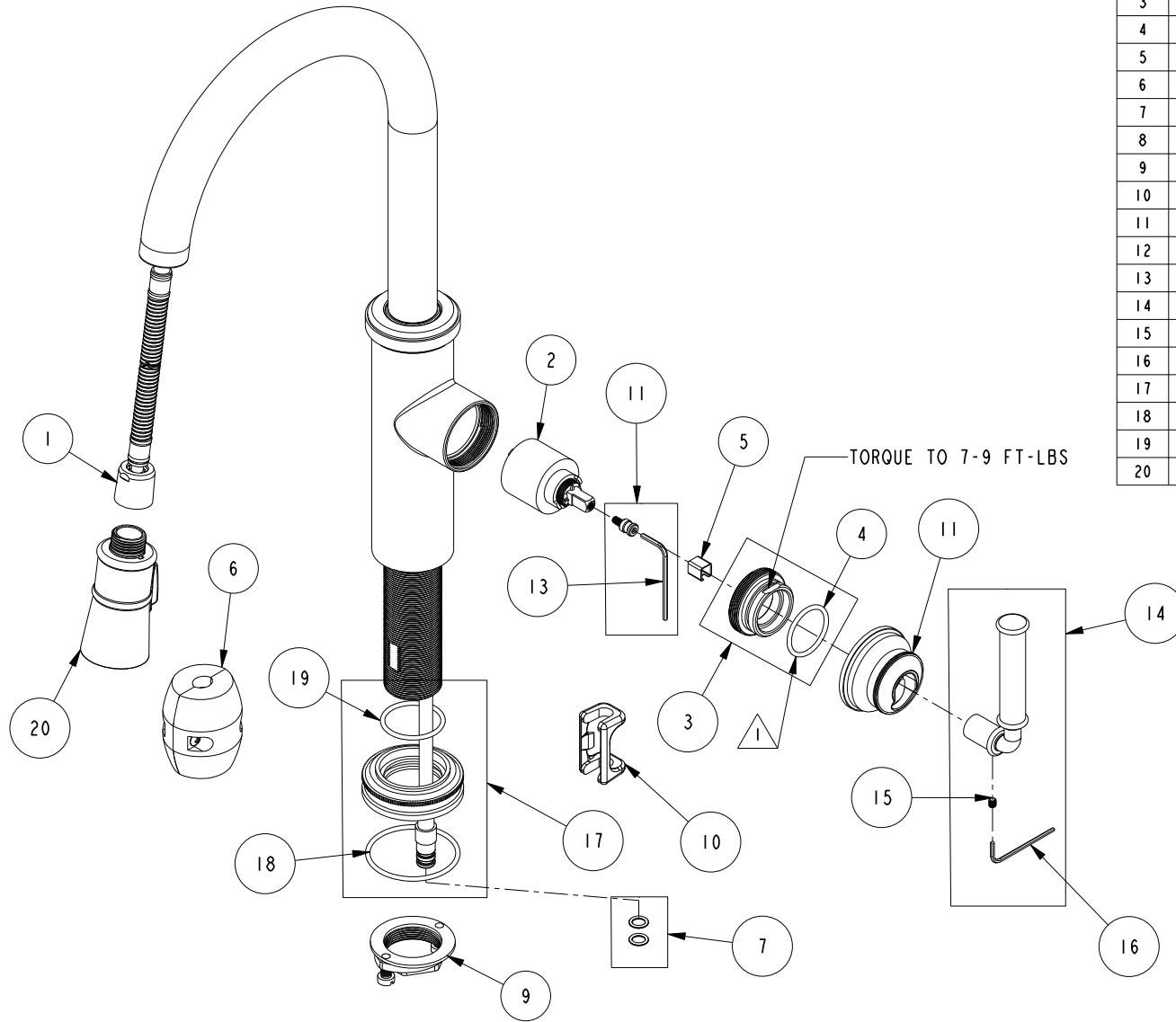


REPLACEMENT PARTS

NOTE:

 USE SILICON GREASE (PART NUMBER 6727) TO LUBRICATE O-RINGS BEFORE INSTALL.



ITEM	PT/ASSY	SPECIFY FINISH	DESCRIPTION
1	11877		HOSE, PULLDOWN SWIVEL
2	1-064		SINGLE LEVER CARTRIDGE
3	1-266		CART. RETAINER ASM
4	91608		O-RING, #2-122, EPDM, 65-75 DURO
5	91534		CARTRIDGE STEM INSERT
6	1-286		WEIGHT ASM
7	FOAM		ADHESIVE FOAM STRIP 33 X 15 X 3.5 MM
8	1-399		O-RING KIT FOR SPOUT PEX CONECTION
9	1-256		MOUNTING KIT
10	91568		RETAINER CLIP
11	12837	YES	HANDLE HUB
12	1-519		HANDLE ADAPTER SCREW WITH HEX KEY
13	10159		HEX KEY, 3/32 ALLOY STEEL
14	20-315	YES	HANDLE LEVER ASM
15	92001		SCRW, 8-32 X 3/16 SKT HD FLT PT SS
16	10192		HEX KEY TOOL, #8 5/64
17	20-153	YES	BASE RING ASM
18	91753		O-RING, # 2-136, EP, 50 DURO - GREY
19	91227		O-RING, #2-125 EPDM
20	3-571	YES	SPRAY HEAD, TAFT

PULL DOWN KITCHEN FAUCET - TAFT
2940-5103

REV N EN-4766 01/17/24 APPROVED RS

NEWPORT BRASS.

t: 949.417.5207 | www.newportbrass.com