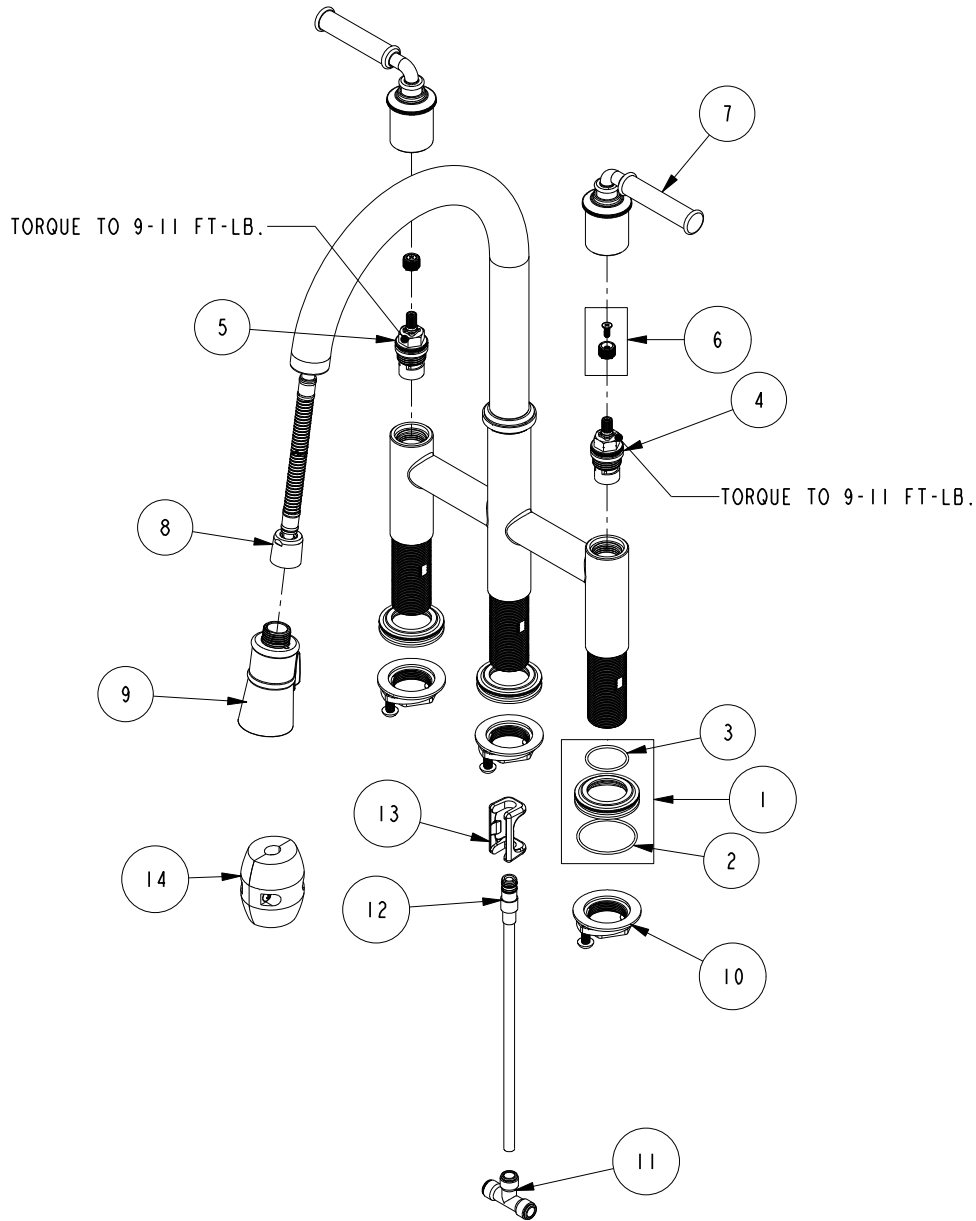


REPLACEMENT PARTS



ITEM	PT/ASSY	SPECIFY FINISH	DESCRIPTION
1	20-671	YES	ESCUTCHEON ASM.
2	91759		O-RING, #2-030, 50 DURO
3	91144		O-RING, #2-024, EPDM, 65-75 DURO
4	1-005		C/S VALVE CARTRIDGE - COLD
5	1-006		C/S VALVE CARTRIDGE - HOT
6	10-305		CARTRIDGE STEM ADAPTER KIT
7	20-670	YES	LEVER HANDLE ASM
8	11877		HOSE, PULLDOWN SWIVEL
9	3-571	YES	SPRAY HEAD, TAFT
10	1-393		1-1/8" 18 UNEF MOUNTING KIT
11	92934		5/16" TUBE TEE CONNECTOR
12	1-474		PEX PULLDOWN CONNECTOR
13	91568		RETAINER CLIP
14	1-286		WEIGHT ASM

BRIDGE PULLDOWN
2940-5463

REV B EN-4729 11/02/23 APPROVED RS

NEWPORT BRASS.

t: 949.417.5207 | www.newportbrass.com