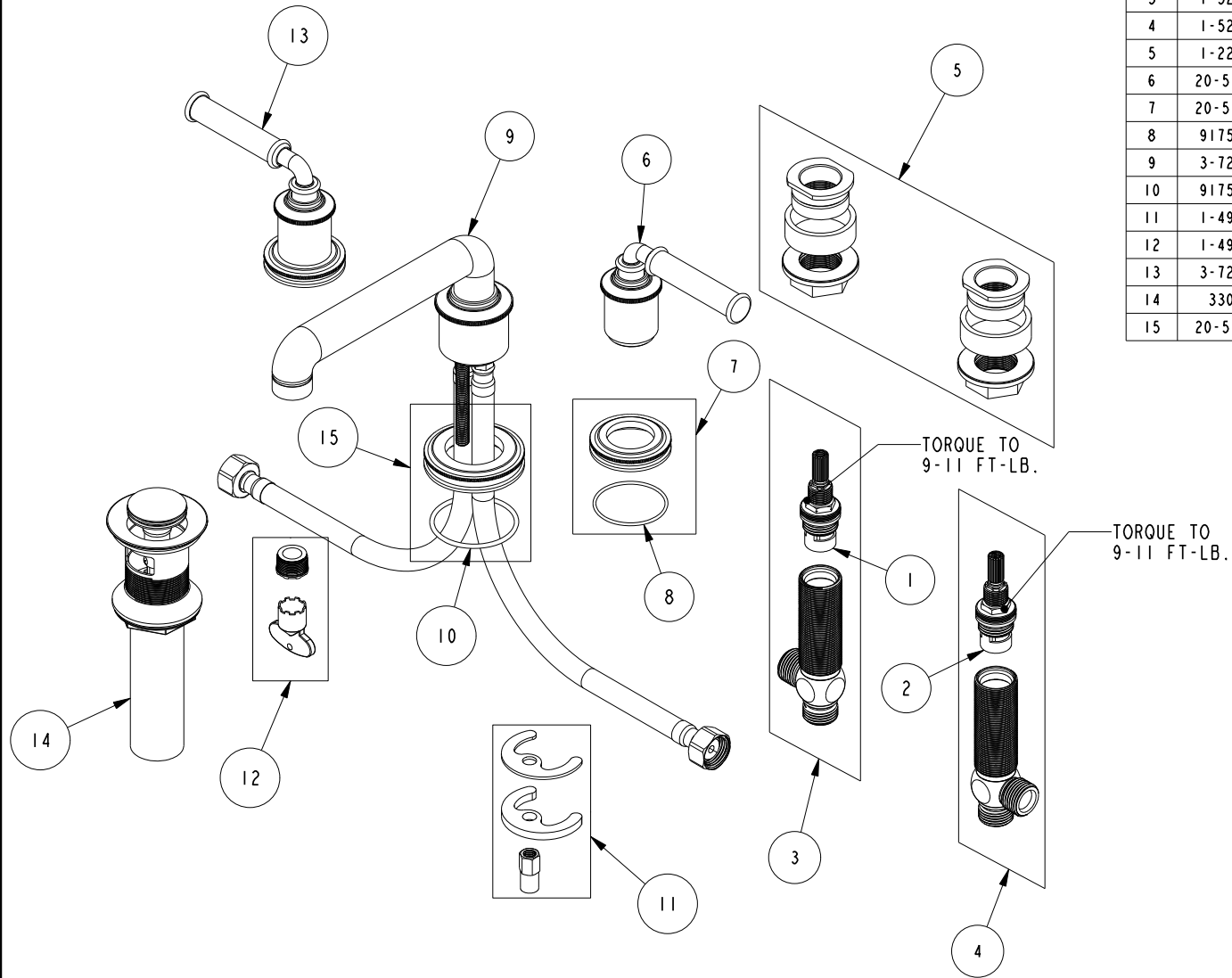


REPLACEMENT PARTS



ITEM	PT/ASSY	SPECIFY FINISH	DESCRIPTION
1	1-001		W/S CARTRIDGE - COLD
2	1-002		W/S CARTRIDGE - HOT
3	1-526		W/S CART/BODY ASM (COLD)
4	1-527		W/S CART/BODY ASM (HOT)
5	1-226		WIDESPREAD MOUNTING HARDWARE
6	20-577	YES	LEVER HANDLE ASM
7	20-576	YES	ESCUTCHEON ASM
8	91759		O-RING, #2-030, 50 DURO
9	3-726	YES	W/S SPOUT ASM
10	91756		O-RING #2-134, EP, 50 DURO - GREY
11	1-491		SPOUT MOUNTING KIT
12	1-492		AERATOR 1.2 GPM WITH KEY
13	3-727	YES	LEVER HANDLE W/ESC.
14	330	YES	DRAIN, PUSH DOWN, W/ OVERFLOW
15	20-574	YES	SPOUT BASE ASM

**WIDESPREAD FAUCET
2940**

REV B EN-4734 11/08/23 APPROVED R.S.

NEWPORT BRASS.

t: 949.417.5207 | www.newportbrass.com