

NOTES:

- (NI) 1. TO INSPECT ASSEMBLY, FOLLOW FIRST ARTICLE AND IN PROCESS INSPECTION SHEET.
- 2. ORIENTATION OF ITEM (5) AND ITEM (7) IS SHOWN IN FIGURE 1 AND FIGURE 2.

BILL OF MATERIAL (CURRENT LEVEL)

ITEM	PT/ASSY	DESCRIPTION	TYPE	QTY.
1	11458	ESCUTCHEON	PART	1
2	92070	SCRW, #14 X 2 SLT FLT HD SS	PART	1
3	91368	WALL ANCHOR PLASTIC, 12-1/4	PART	1
4	91766	O-RING, #2-029, 50 DURO	PART	1
5	92242	SCRW, 10-24 X 1/4 SKT HD CONE PT SS	PART	1
6	11477	HOLDER, FLANGE, CONTEMP.	PART	1
7	13366	HANDSPRAY HOLDER	PART	1

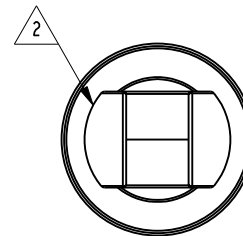
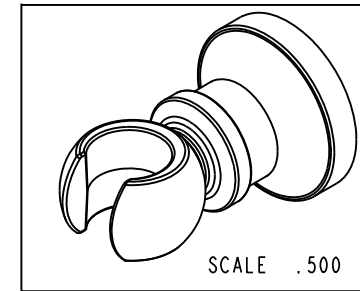
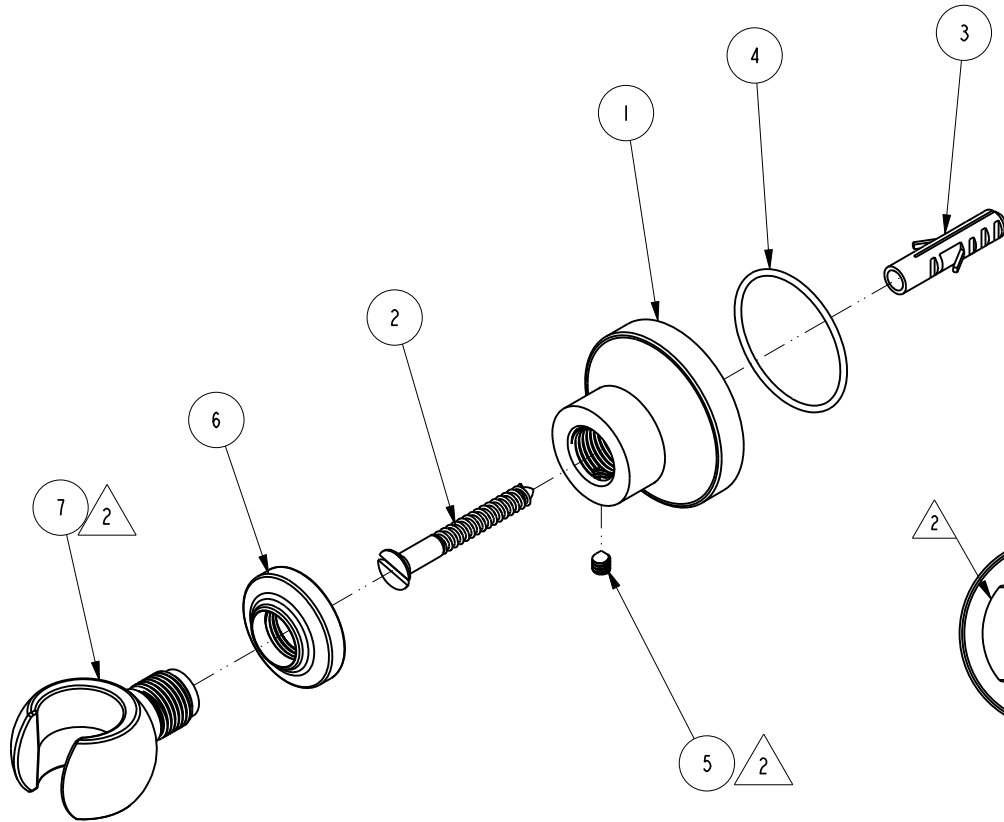


FIGURE 1

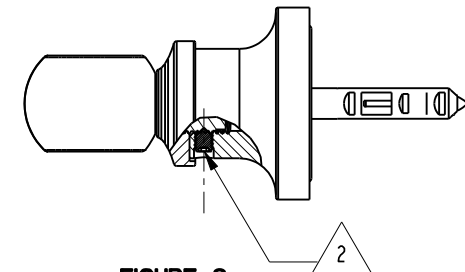


FIGURE 2

ZONE	REV	DESCRIPTION	DATE	APPROVED
-	D	EN-4324	03/10/21	J.M.
-	C	EN-3722	02/08/19	C.G.
-	B	EN-1426	07/15/10	-
-	A	EN-1206	03/20/09	-
-	-	ECN-1129	11/18/08	-

COPYRIGHT 2005 BRASSTECH, INC. THESE DRAWINGS AND THE DESIGNS DEPICTED HEREIN ARE THE PROPRIETARY PROPERTY OF BRASSTECH. ANY USE OR REPRODUCTION IS SUBJECT TO THE EXPRESS APPROVAL OF BRASSTECH. UNAUTHORIZED USE IS STRICTLY PROHIBITED. ALL RIGHTS RESERVED.

TESTING	ASSEMBLY	PLATING	POLISHING	MACHINING	TOOLING FIXTURE #
-	-	-	-	-	-
-	-	280H	280H	-	-
-	-	NEXT ASSY	USED ON	-	-
-	-	APPLICATION		-	-
-	-	REMOVE ALL BURRS AND SHARP EDGES		-	-

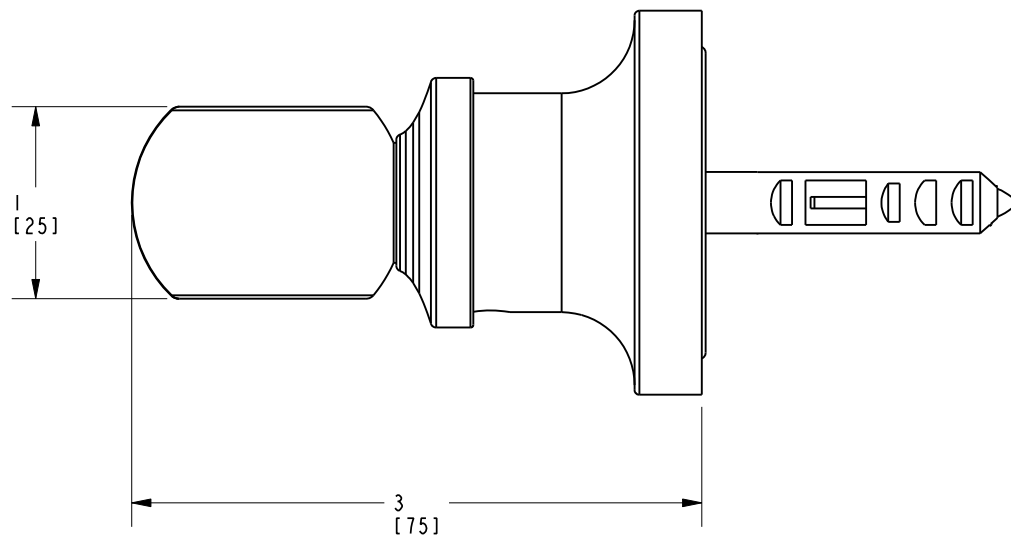
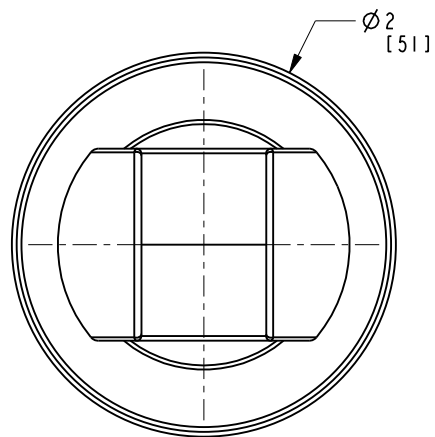
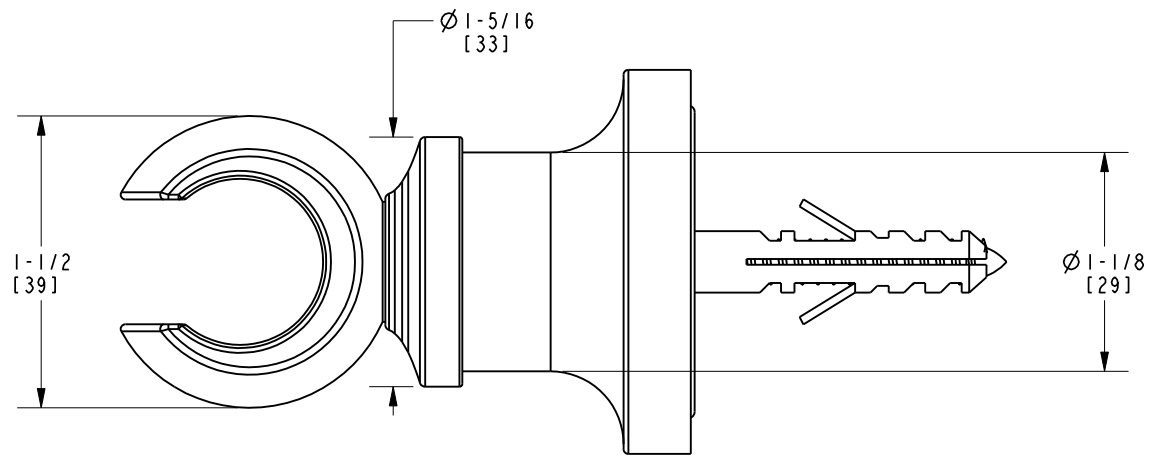
UNITS ARE: INCHES [MM]	TOLERANCES ARE:
FRACTIONS DECIMALS	ANGLES
±1/16"	.X ±.1 [2.5] ±1°
	.XX ±.06 [1.5]
(X.XXX) DENOTES CRITICAL DIMS.	ALL THREADS ARE CRITICAL
DRAWN	JINSON 02/08/19
CHECKED	C.G. 02/08/19
APPROVED	C.G. 02/08/19

BRASSTECH 2001 CARNEGIE AVE. SANTA ANA, CA 92705 (949) 417-5207
INCORPORATED

HANDSPRAY WALL MOUNT ASSY, CONTEMP

DWG NO. **296** REV **D**

SCALE .500 REF. - SHEET 1 OF 2



BRASSTECH		2001 E. CARNEGIE AVE. SANTA ANA, CA 92705 (949) 417-5207	
INCORPORATED			
DWG NO.	296	REV	D
SCALE 1.000	REF. -	SHEET 2	OF 2