

NOTES:

- 1. TO INSPECT ASSEMBLY, FOLLOW FIRST ARTICLE AND IN PROCESS INSPECTION SHEET.
- 2. ORIENTATION OF ITEM (5) AND ITEM (7) IS SHOWN IN FIGURE 1 AND FIGURE 2.

BILL OF MATERIAL (CURRENT LEVEL)

ITEM	PT/ASSY	DESCRIPTION	TYPE	QTY.
1	80185	ESCUTCHEON	PART	1
2	92070	SCRW, #14 X 2 SLT FLT HD SS	PART	1
3	91368	WALL ANCHOR PLASTIC, 12-1/4	PART	1
4	11476	HOLDER, FLANGE TRAD.	PART	1
5	13366	HANDSPRAY HOLDER	PART	1
6	91766	O-RING, #2-029, 50 DURO	PART	1
7	92242	SCRW, 10-24 X 1/4 SKT HD CONE PT SS	PART	1

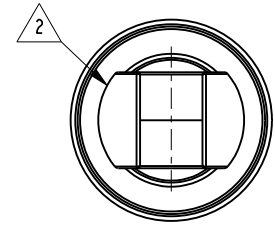
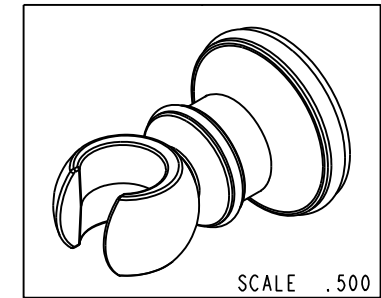
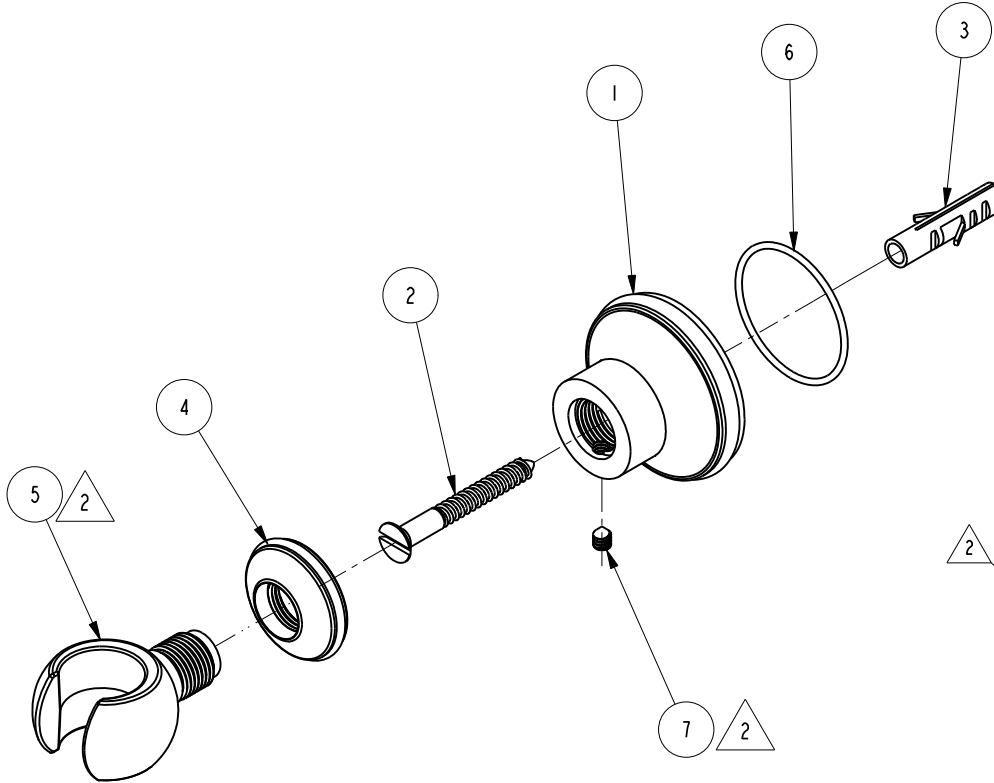


FIGURE 1

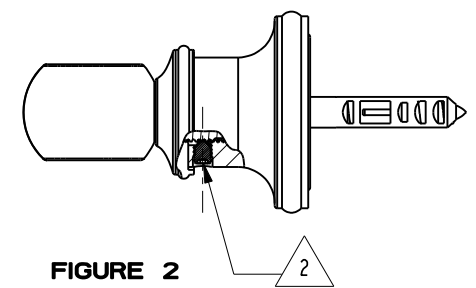


FIGURE 2

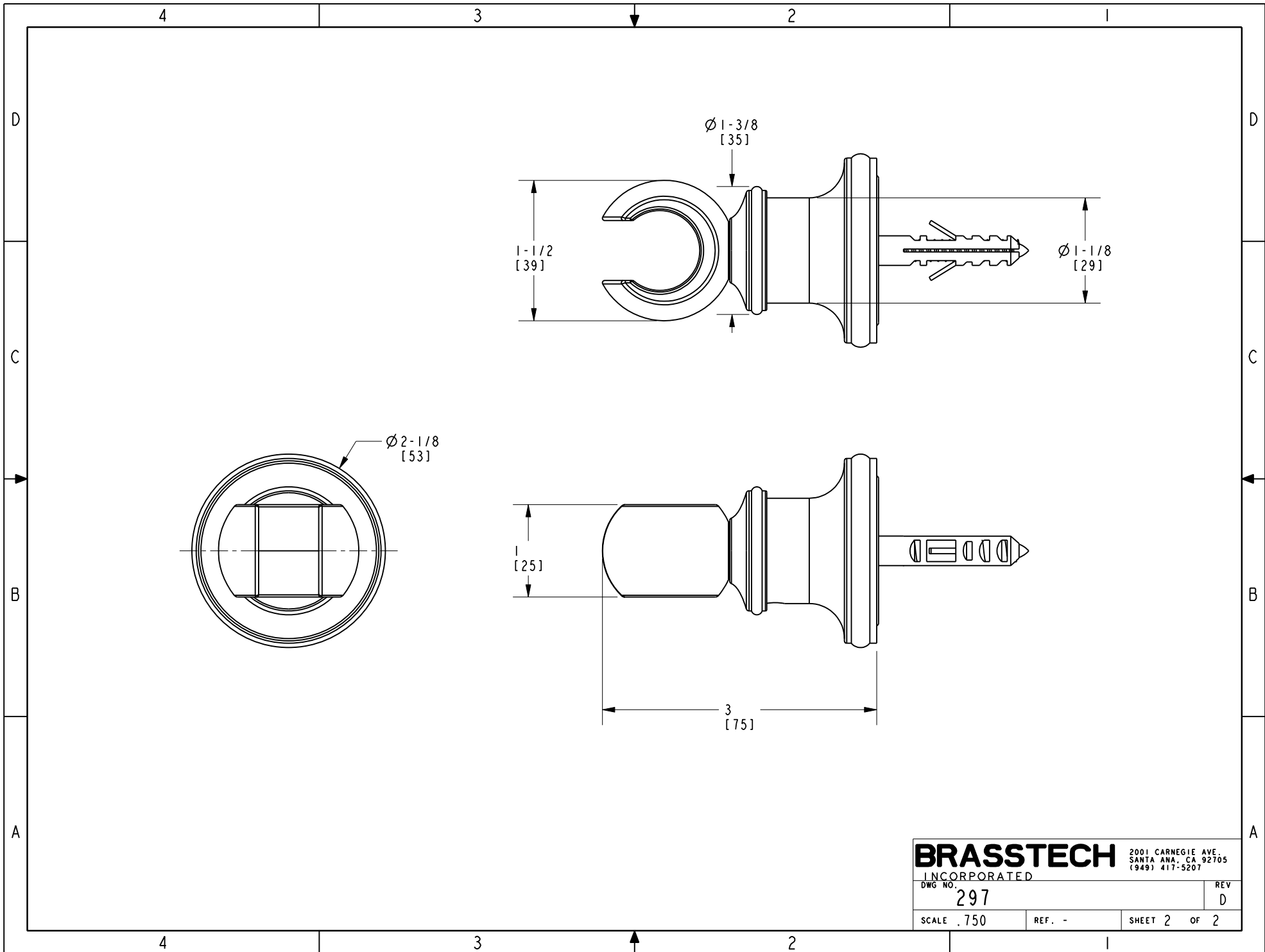
ZONE	REV	DESCRIPTION	DATE	APPROVED
-	D	EN-4324	03/10/21	J.M.
-	C	EN-3722	02/08/19	C.G.
-	B	EN-1426	07/15/10	-
-	A	EN-1206	03/20/09	-
-	-	EN-1129	12/02/08	-

COPYRIGHT 2005 BRASSTECH, INC. THESE DRAWINGS AND THE DESIGNS DEPICTED HEREIN ARE THE PROPRIETARY PROPERTY OF BRASSTECH. ANY USE OR REPRODUCTION IS SUBJECT TO THE EXPRESS APPROVAL OF BRASSTECH. UNAUTHORIZED USE IS STRICTLY PROHIBITED. ALL RIGHTS RESERVED.

TESTING	ASSEMBLY	PLATING	POLISHING	MACHINING	TOOLING FIXTURE #
-	-	-	-	-	-
-	-	280N	280N	-	-
-	-	NEXT ASSY	USED ON	-	-
-	-	APPLICATION		-	-
-	-	REMOVE ALL BURRS AND SHARP EDGES		-	-

UNITS ARE: INCHES [MM]  
 TOLERANCES ARE:  
 FRACTIONS DECIMALS ANGLES  
 ±1/16" .X ±.1 [2.5] ±1°  
 .XX ±.06 [1.5]  
 (X.XXX) DENOTES CRITICAL DIMS.  
 ALL THREADS ARE CRITICAL  
 DRAWN JINSON 02/08/19  
 CHECKED C.G. 02/08/19  
 APPROVED C.G. 02/08/19

**BRASSTECH** 2001 CARNEGIE AVE. SANTA ANA, CA 92705 (949) 417-5207  
 INCORPORATED  
**HANDSPRAY WALL MOUNT ASM**  
 DWG NO. 297 REV D  
 SCALE .500 REF. - SHEET 1 OF 2



**BRASSTECH** 2001 CARNEGIE AVE.  
 INCORPORATED SANTA ANA, CA 92705  
 (949) 417-5207

DWG NO.	REV
297	D
SCALE .750	REF. - SHEET 2 OF 2