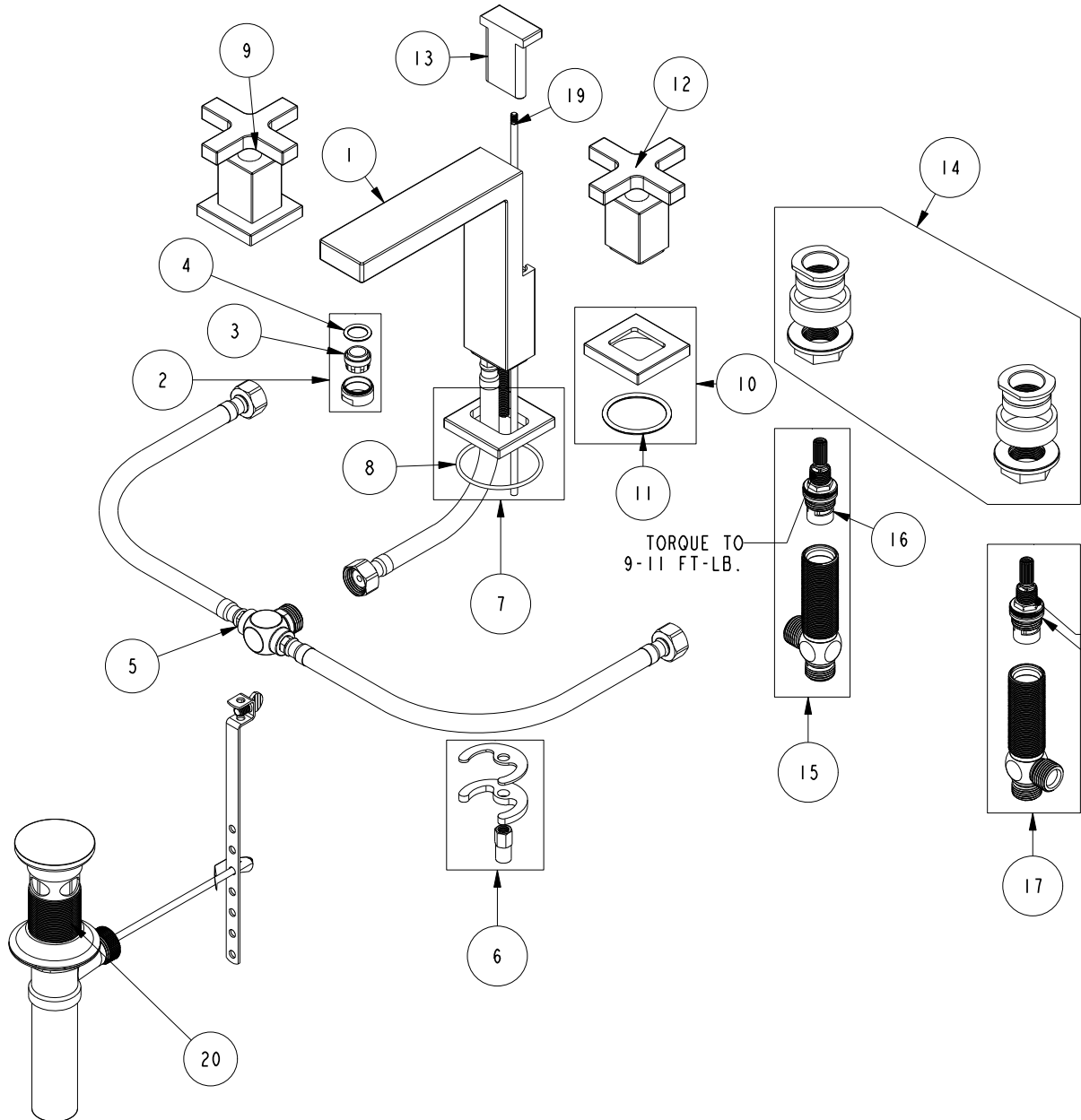


# REPLACEMENT PARTS



ITEM	PT/ASSY	SPECIFY FINISH	DESCRIPTION
1	3-719	YES	SPOUT ASM
2	8-176	YES	AERATOR ASM, 1.2 GPM
3	12403		AERATOR INSERT, Jr. SIZE, 1.2 GPM
4	91028		O-RING, #2- 113, EPDM, 65-75 DURO, NSF 61
5	1-655		WATER MIXER WIDESPREAD
6	1-491		SPOUT MOUNTING KIT
7	8-024	YES	WIDESPREAD SPOUT BASE ASM
8	91751		O-RING, #2-139, 50 DURO
9	3-577	YES	HANDLE CROSS/ ESC ASM
10	2-936	YES	HANDLE ESCUTCHEON ASM
11	91748		O-RING, #2-223, EP, 50 DURO - GREY
12	20-175	YES	HANDLE CROSS ASM
13	80030	YES	POP UP KNOB
14	1-226		WIDESPREAD MOUNTING HARDWARE
15	1-527		W/S CART/BODY ASM (HOT)
16	1-002		W/S CARTRIDGE - HOT
17	1-526		W/S CART/BODY ASM (COLD)
18	1-001		W/S CARTRIDGE - COLD
19	10288	YES	3/16" POP UP ROD
20	325	YES	POP UP ASSEMBLY

TORQUE TO  
9-11 FT-LB.

TORQUE TO  
9-11 FT-LB.

W/S LAV FAUCET  
2990C

REV A EN-4877 09/05/24

**NEWPORT BRASS.**

t: 949.417.5207 | www.newportbrass.com