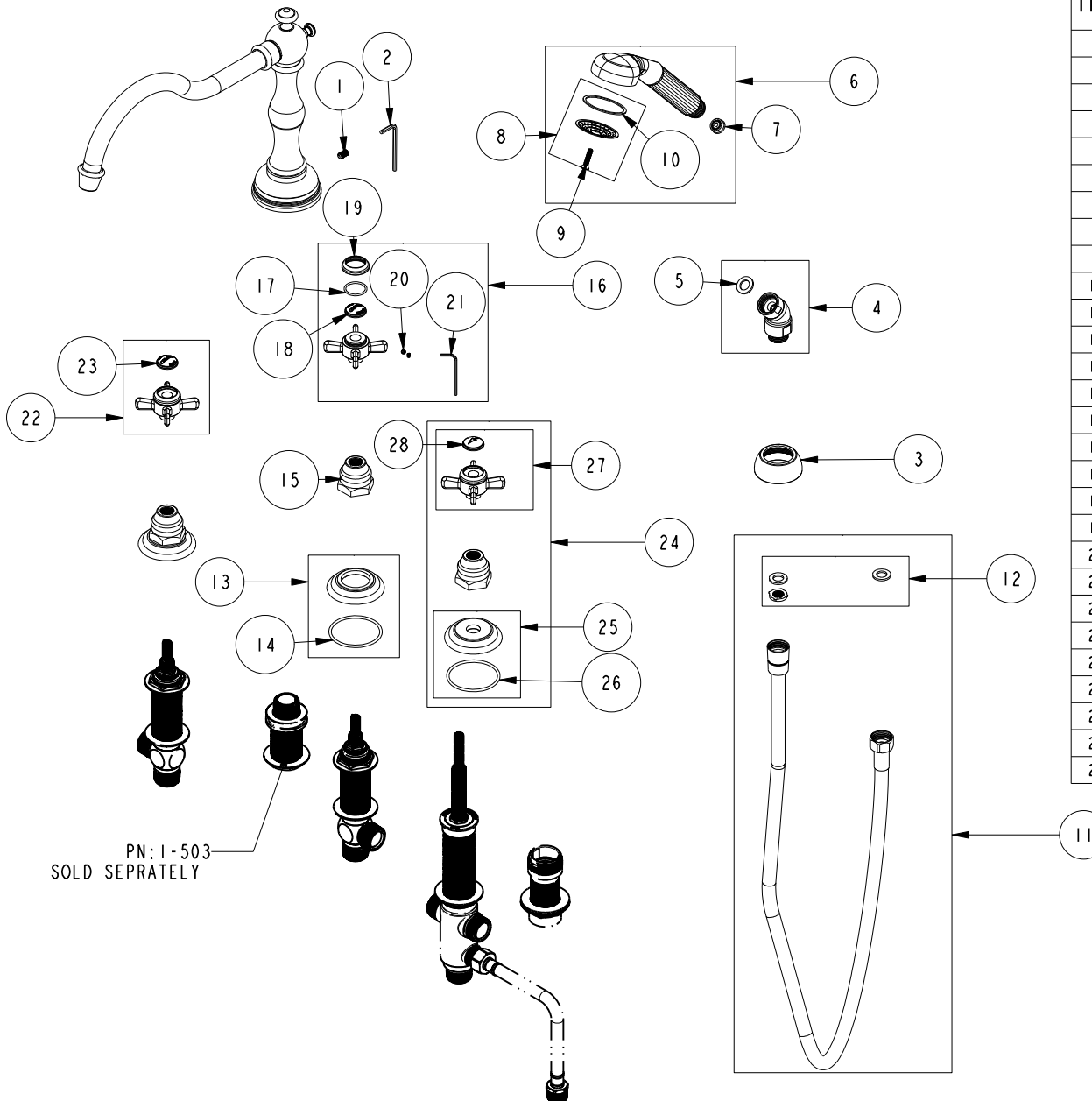


# REPLACEMENT PARTS



ITEM	PT/ASSY	SPECIFY FINISH	DESCRIPTION
1	92003		SCRW, 1/4-20 X 7/16 SKT HD FLT PT SS
2	92422		HEX KEY, 1/8' ALLOY STEEL
3	50303	YES	FLANGE
4	2-846	YES	HAND SHOWER ELBOW ASM
5	91153		WSHR .438 X .738
6	280	YES	HAND SHOWER WITH GROOVE
7	12832		FLOW REGULATOR, 1.8 GPM MAX
8	20-855	YES	FACEPLATE ASSEMBLY
9	92253	YES	SCRW, 10-24 X .830 PHIL FLT HD BRASS
10	91173		WSHR, 1.64 ID X 1.84 OD X .042 THK, FLT, RUBBER
11	284	YES	59 IN. SPIRAL SHOWER HOSE
12	10-360		WASHER AND FILTER SCREEN KIT
13	20-866	YES	ESCUTCHEON ASM
14	91753		O-RING, # 2-136, EP, 50 DURO - GREY
15	10523	YES	HEX ESCUTCHEON BONNET
16	2-115	YES	THIN BLADE X - HANDLE COLD
17	91023		O-RING, #2- 019, EPDM, 65-75 DURO, NSF 61
18	10815	YES	PORC BUTTON - FROID (COLD)
19	10814	YES	BEZEL
20	92000		SCREW 8 - 32 X 1/8 SS
21	10192		HEX KEY TOOL, #8 5/64
22	2-114	YES	THIN BLADE X - HANDLE HOT
23	10816	YES	PORC BUTTON - CHAUD (HOT)
24	3-230	YES	Cross handle Trim
25	20-742	YES	ESCUTCHEON ASM
26	91753		O-RING, # 2-136, EP, 50 DURO - GREY
27	2-157	YES	THIN BLADE X - HDL - DIVERter
28	10817	YES	PORC BUTTON - ARROW

ROMAN TUB WITH HANDSHOWER DECK TRIM  
3-1007

**NEWPORT BRASS.**

t: 949.417.5207 | www.newportbrass.com