

4

3

2

D

D

C

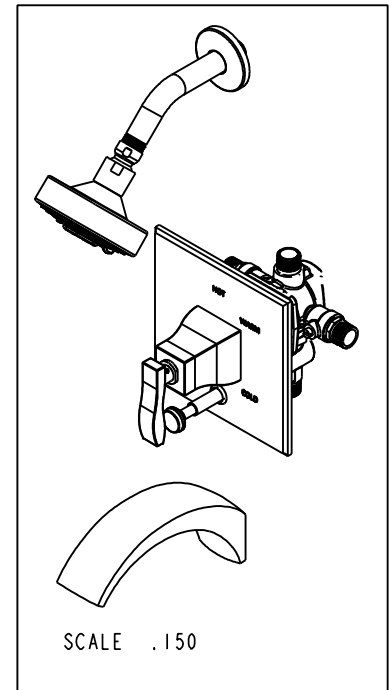
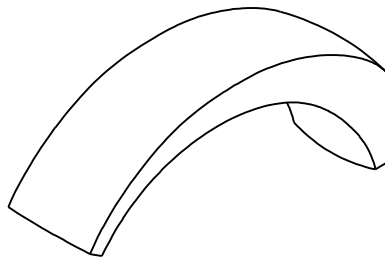
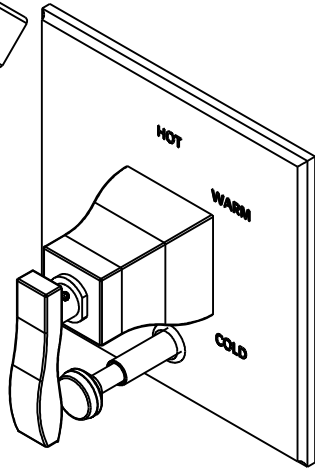
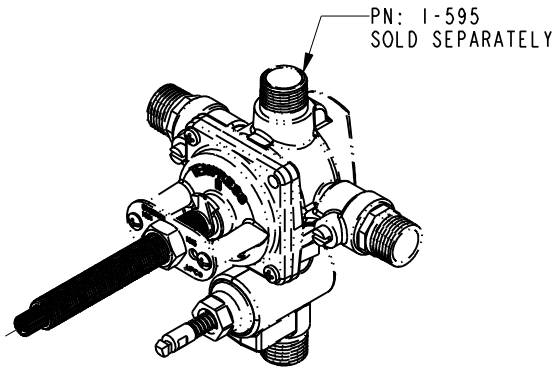
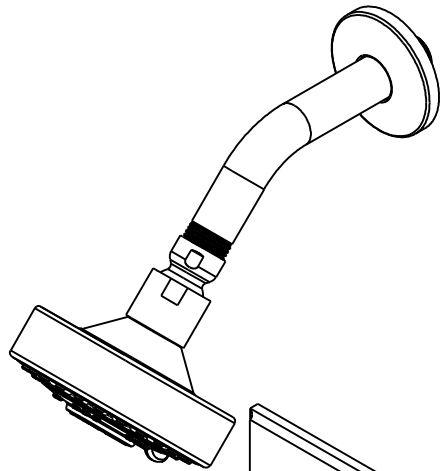
C

B

B

A

A



| | | | |
|------------------|----------|-----------------------|----------|
| BRASSTECH | | 2001 E. CARNEGIE AVE. | |
| INCORPORATED | | SANTA ANA, CA 92705 | |
| | | (949) 417-5207 | |
| DWG NO. | 3-1042BP | | REV D |
| SCALE .300 | REF. - | SHEET 2 OF 3 | |

4

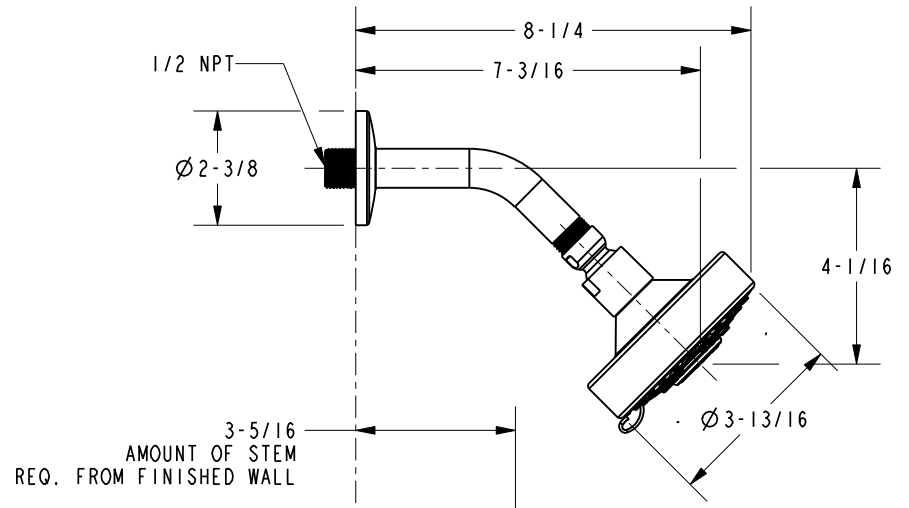
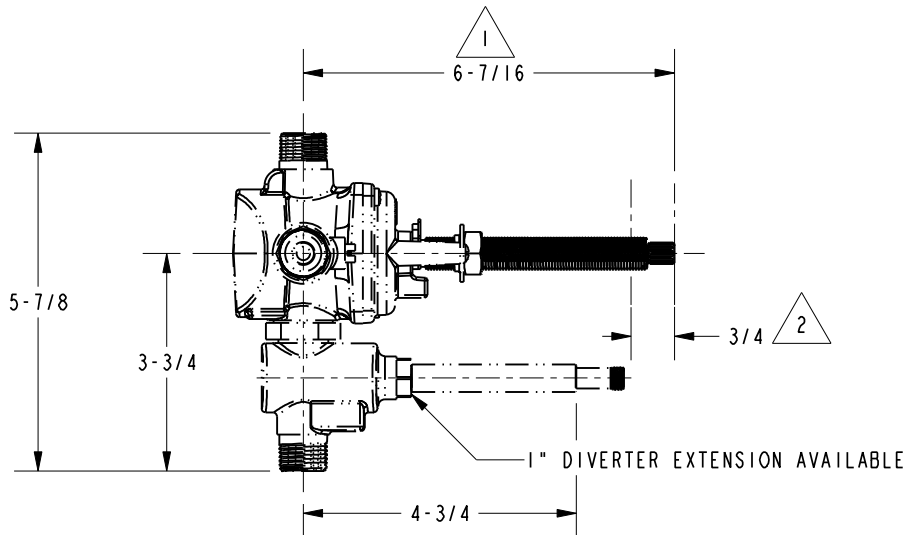
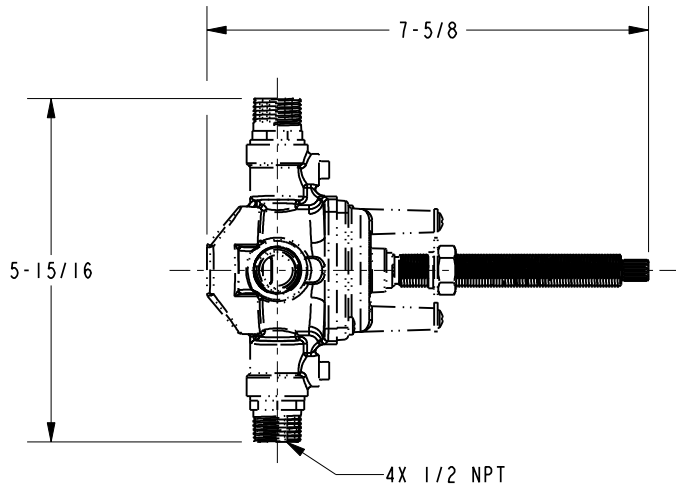
3

2

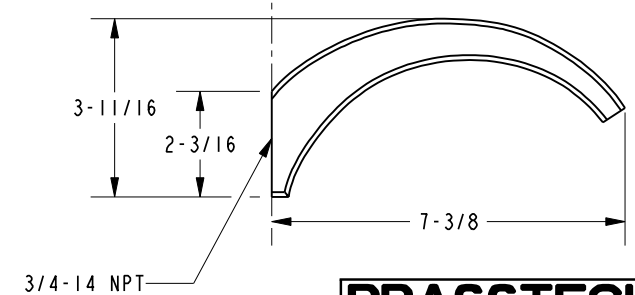
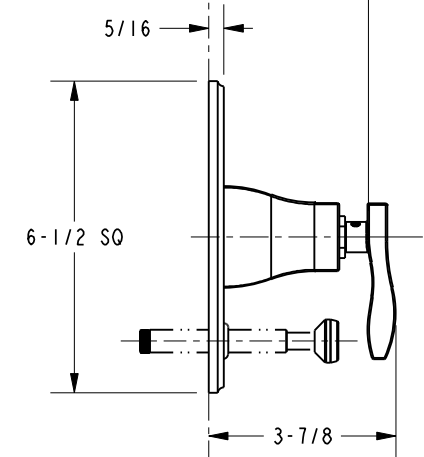
1

NOTES:

- 1. CUT STEM TO DIMENSION SHOWN.
- 2. CUT ALL-THREAD 3/4" SHORTER THAN STEM.



3-5/16
AMOUNT OF STEM
REQ. FROM FINISHED WALL



| | | | |
|------------------|----------|--|----------|
| BRASSTECH | | 2001 E. CARNEGIE AVE. SANTA ANA, CA 92705 (949) 417-5207 | |
| DWG NO. | 3-1042BP | | REV D |
| SCALE .250 | REF. - | SHEET 3 OF 3 | |