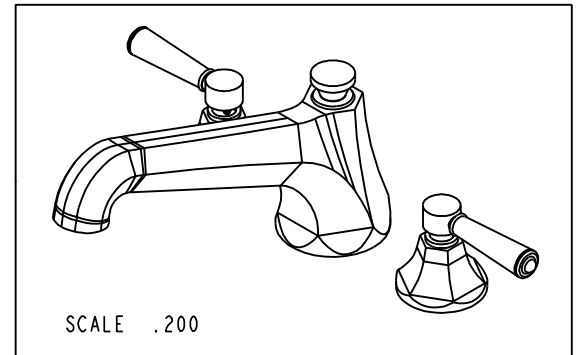
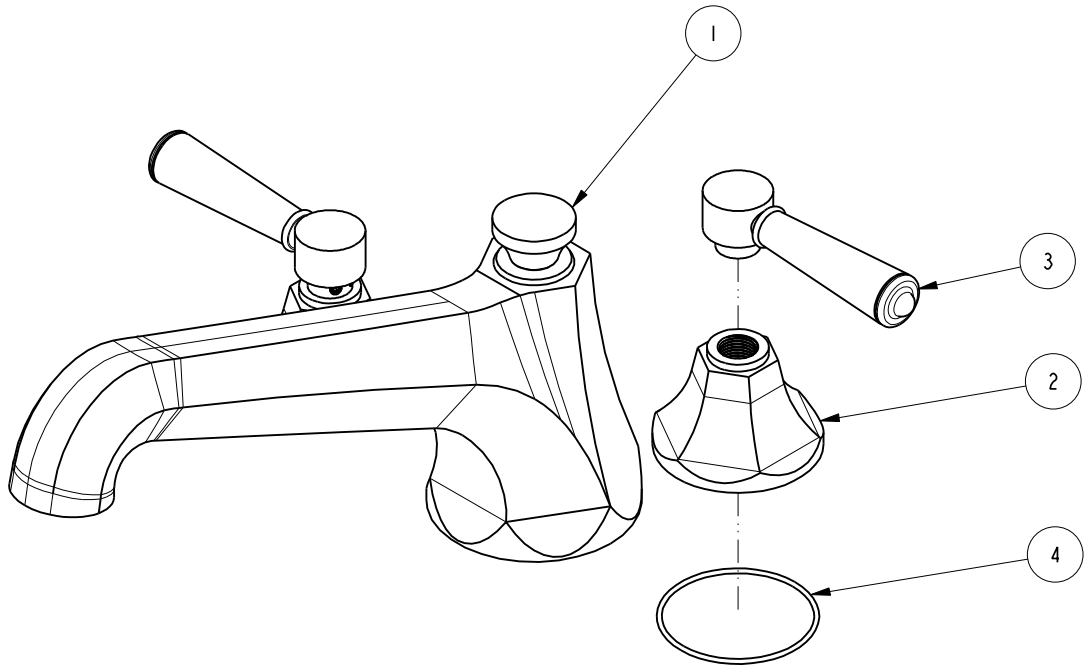


NOTES:

1. TO INSPECT ASSEMBLY, FOLLOW FIRST ARTICLE AND IN PROCESS INSPECTION SHEET.

BILL OF MATERIAL (CURRENT LEVEL)

| ITEM | PT/ASSY | DESCRIPTION | TYPE | QTY. |
|------|---------|--------------------------------------|----------|------|
| 1 | 2-162 | R/T SPOUT ASM | ASSEMBLY | 1 |
| 2 | 10960 | HEX ESCUTCHEON | PART | 2 |
| 3 | 2-279 | TAPERED LEVER HNDL ASM | ASSEMBLY | 2 |
| 4 | 91754 | O-RING, #2-034, EPDM, 50 DURO - GREY | PART | 2 |



| ZONE | REV | DESCRIPTION | DATE | APPROVED |
|------|-----|-------------|----------|----------|
| - | E | EN-4300u | 02/02/21 | R.S. |
| - | D | EN-3722 | 02/08/19 | C.G. |
| - | C | EN-3547 | 02/09/18 | - |
| - | B | EN-2266 | 04/09/13 | - |
| - | A | EN-1167 | 12/19/08 | - |

COPYRIGHT 2005 BRASSTECH, INC. THESE DRAWINGS AND THE DESIGNS DEPICTED HEREIN ARE THE PROPRIETARY PROPERTY OF BRASSTECH. ANY USE OR REPRODUCTION IS SUBJECT TO THE EXPRESS APPROVAL OF BRASSTECH. UNAUTHORIZED USE IS STRICTLY PROHIBITED. ALL RIGHTS RESERVED.

| TESTING | ASSEMBLY | PLATING | POLISHING | MACHINING | TOOLING FIXTURE # |
|----------------------------------|----------|---------|-----------|-----------|-------------------|
| - | - | - | - | - | - |
| - | - | - | - | - | - |
| - | - | - | NEXT ASSY | USED ON | - |
| - | - | - | - | - | - |
| APPLICATION | | | | | |
| REMOVE ALL BURRS AND SHARP EDGES | | | | | |

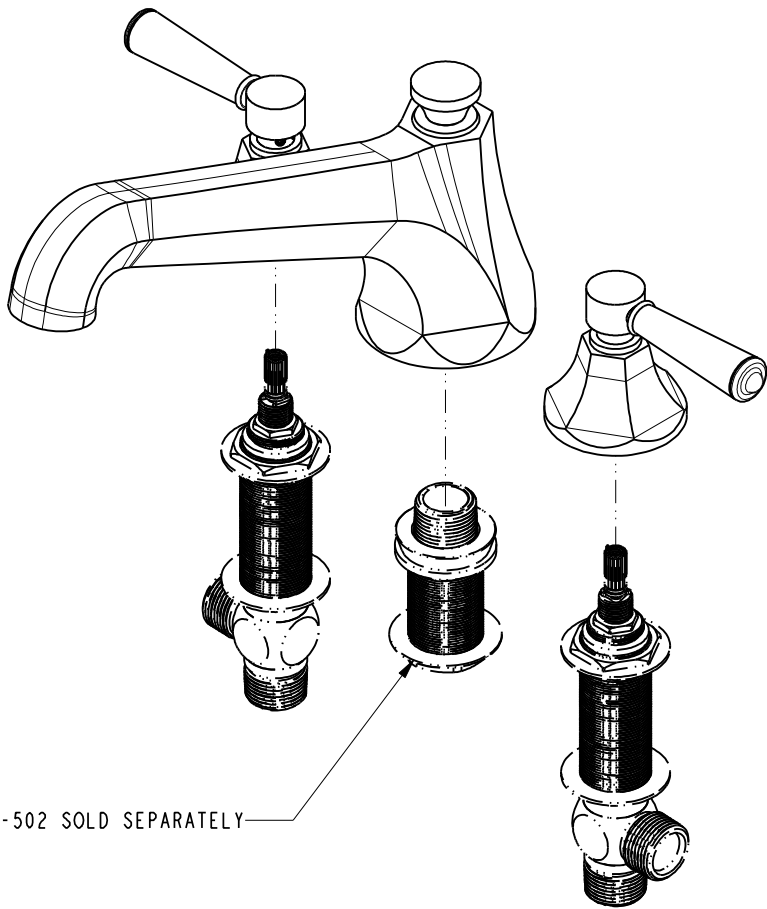
| | | |
|--------------------------------|----------------|----------|
| UNITS ARE: INCHES [MM] | | |
| TOLERANCES ARE: | | |
| FRACTIONS | DECIMALS | ANGLES |
| ±1/16" | .X ±.1 [2,5] | ±° |
| | .XX ±.06 [1,5] | |
| (X.XXX) DENOTES CRITICAL DIMS. | | |
| ALL THREADS ARE CRITICAL | | |
| DRAWN | JINSON | 02/02/21 |
| CHECKED | R.S. | 02/02/21 |
| APPROVED | R.S. | 02/02/21 |

BRASSTECH 2001 CARNEGIE AVE. SANTA ANA, CA 92705 (949) 417-5207
INCORPORATED

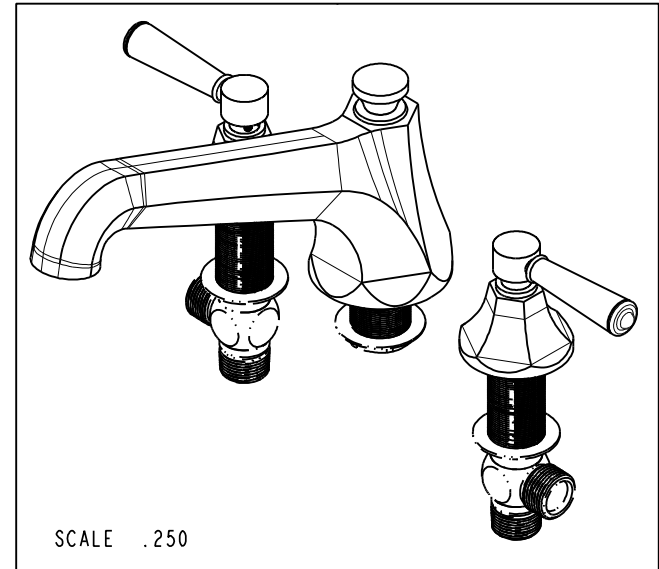
TRIM KIT - ROMAN TUB SET
1206

DWG NO. 3-1206 REV E

SCALE .375 REF. - SHEET 1 OF 3

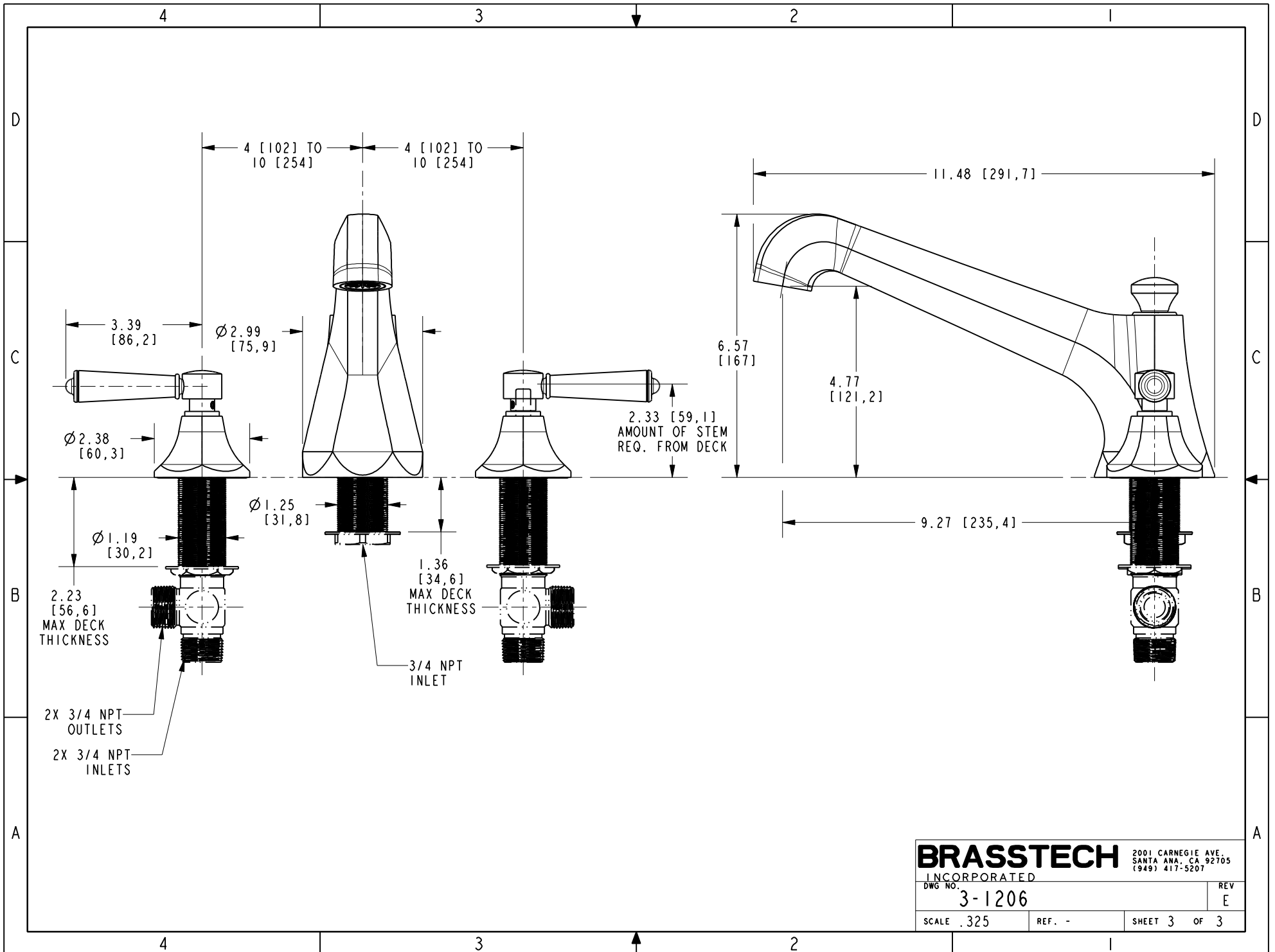


PN: 1-502 SOLD SEPARATELY



SCALE .250

| | | | |
|------------------|--------|---|---|
| BRASSTECH | | 2001 CARNEGIE AVE. SANTA ANA, CA 92705 (949) 417-5207 | |
| INCORPORATED | | | |
| DWG NO. | 3-1206 | REV | E |
| SCALE .313 | REF. - | SHEET 2 OF 3 | |



BRASSTECH 2001 CARNEGIE AVE.
 INCORPORATED SANTA ANA, CA 92705
 (949) 417-5207

| | |
|-------------------|----------|
| DWG NO. 3-1206 | REV E |
| SCALE .325 | REF. - |
| SHEET 3 OF 3 | |