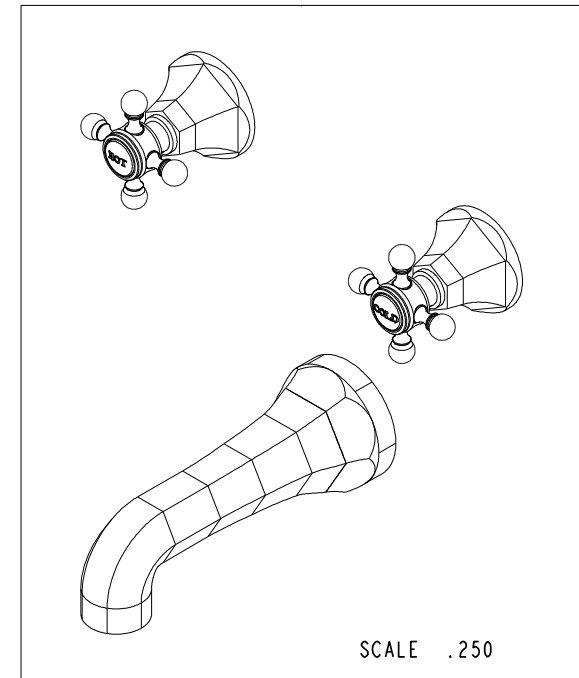
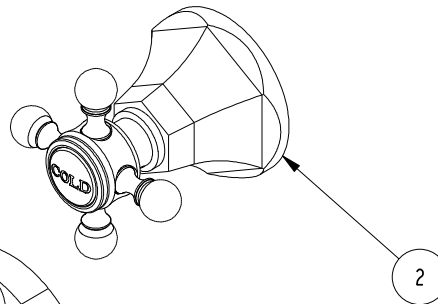
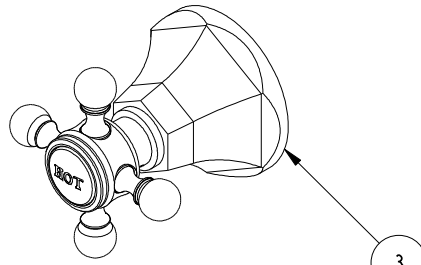


NOTES:

1. TO INSPECT ASSEMBLY, FOLLOW FIRST ARTICLE AND IN PROCESS INSPECTION SHEET.

**BILL OF MATERIAL (CURRENT LEVEL)**

ITEM	PT/ASSY	DESCRIPTION	TYPE	QTY.
1	2-144	WALL TUB SPOUT - HEX	ASSEMBLY	1
2	3-595C	HANDLE/ESC ASM, COLD	ASSEMBLY	1
3	3-595H	HANDLE/ESC ASM, HOT	ASSEMBLY	1



COPYRIGHT 2005 BRASSTECH, INC.  
THESE DRAWINGS AND THE DESIGNS  
DEPICTED HEREIN ARE THE PROPRIETARY  
PROPERTY OF BRASSTECH. ANY USE  
OR REPRODUCTION IS SUBJECT TO  
THE EXPRESS APPROVAL OF BRASSTECH.  
UNAUTHORIZED USE IS STRICTLY  
PROHIBITED. ALL RIGHTS RESERVED.

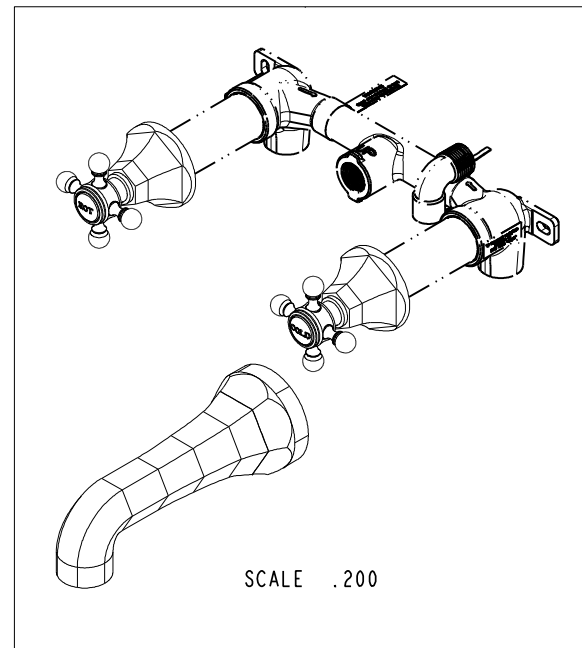
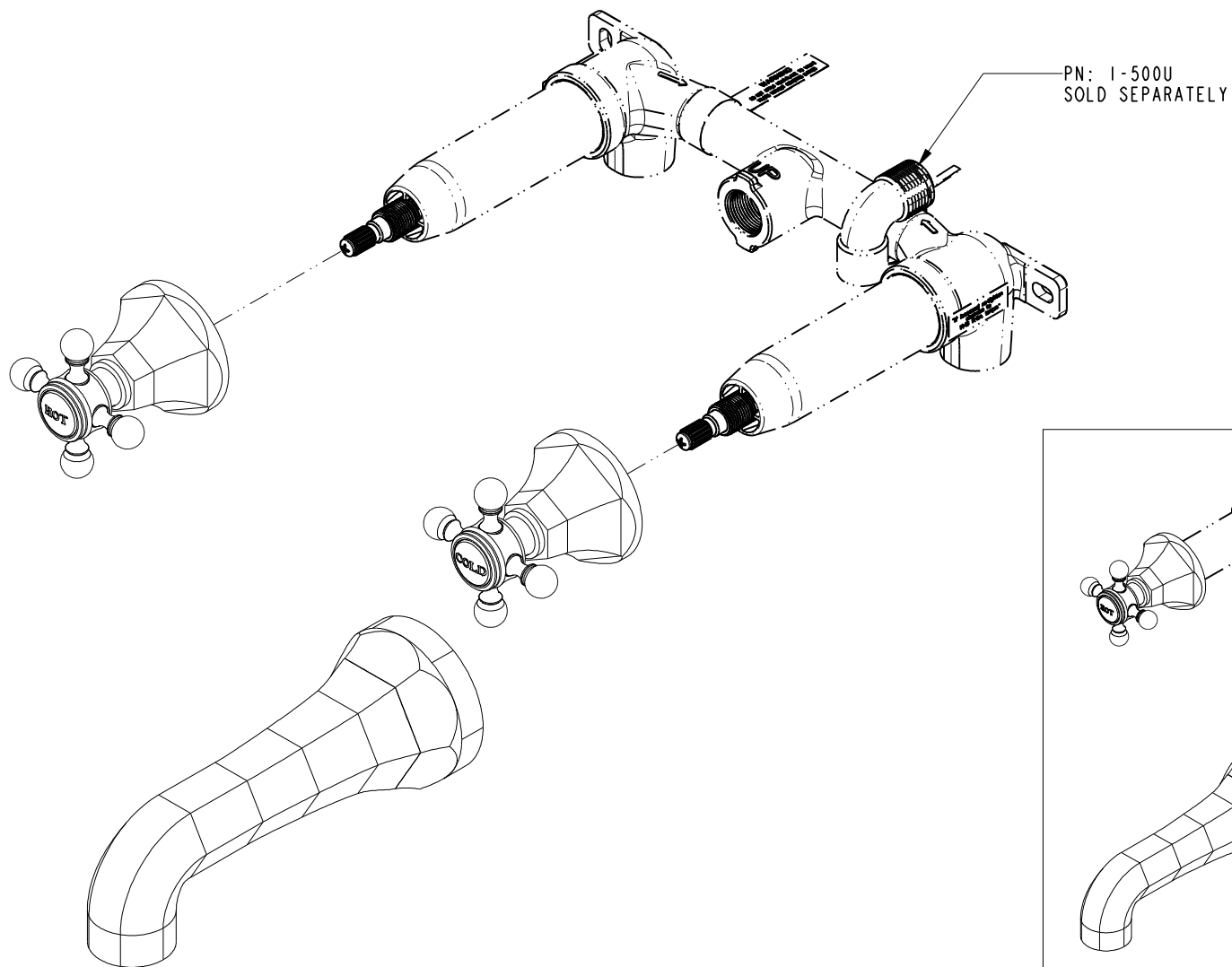
		-	-
TESTING	-	-	-
ASSEMBLY	-	-	-
PLATING	-	-	-
POLISHING	-	NEXT ASSY	USED ON
MACHINING	-	APPLICATION	
TOOLING FIXTURE #		REMOVE ALL BURRS AND SHARP EDGES	

UNITS ARE: INCHES (MM)		
TOLERANCES ARE:		
FRACTIONS	DECIMALS	ANGLES
±1/16"		±1°
.X ±.1	[2.5]	
.XX ±.06	[1.5]	
(X.XXX) DENOTES CRITICAL DIMS.		
ALL THREADS ARE CRITICAL		
DRAWN	JINSON	05/27/20
CHECKED	R.S.	05/27/20
APPROVED	R.S.	05/27/20

**BRASSTECH** 2001 CARNEGIE AVE.  
INCORPORATED SANTA ANA, CA 92705  
(949) 417-5207

**WALL MOUNT TUB FAUCET**

DWG NO.	3-1225	REV	A
SCALE	.400	REF.	-
SHEET	1	OF	3



**BRASSTECH**

INCORPORATED

2001 CARNEGIE AVE.  
SANTA ANA, CA 92705  
(949) 417-5207

DWG NO.

3-1225

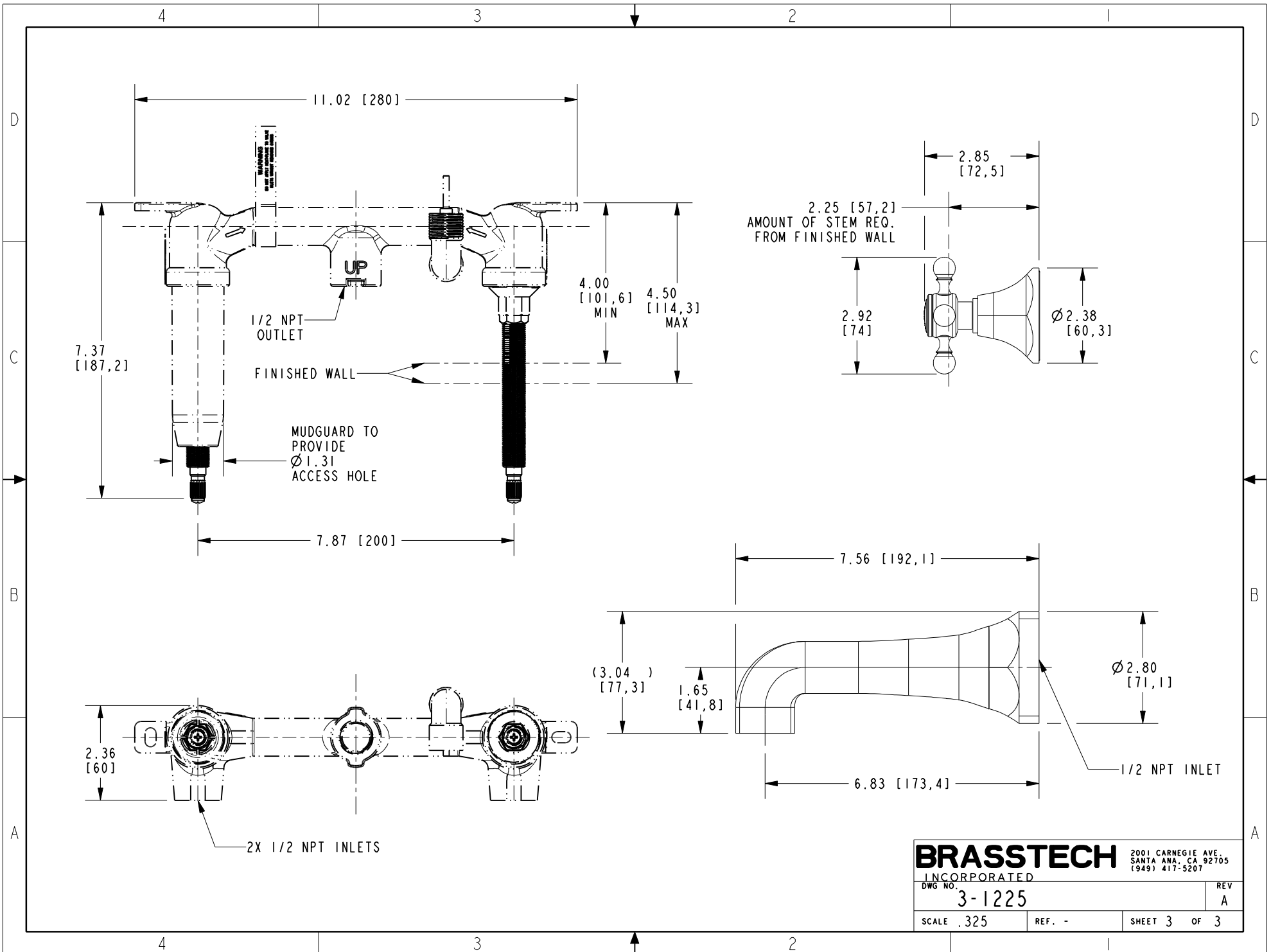
REV

A

SCALE .350

REF. -

SHEET 2 OF 3



**BRASSTECH**

INCORPORATED

DWG NO.

3-1225

REV

A

SCALE .325

REF. -

SHEET 3 OF 3

2001 CARNEGIE AVE.  
SANTA ANA, CA 92705  
(949) 417-5207