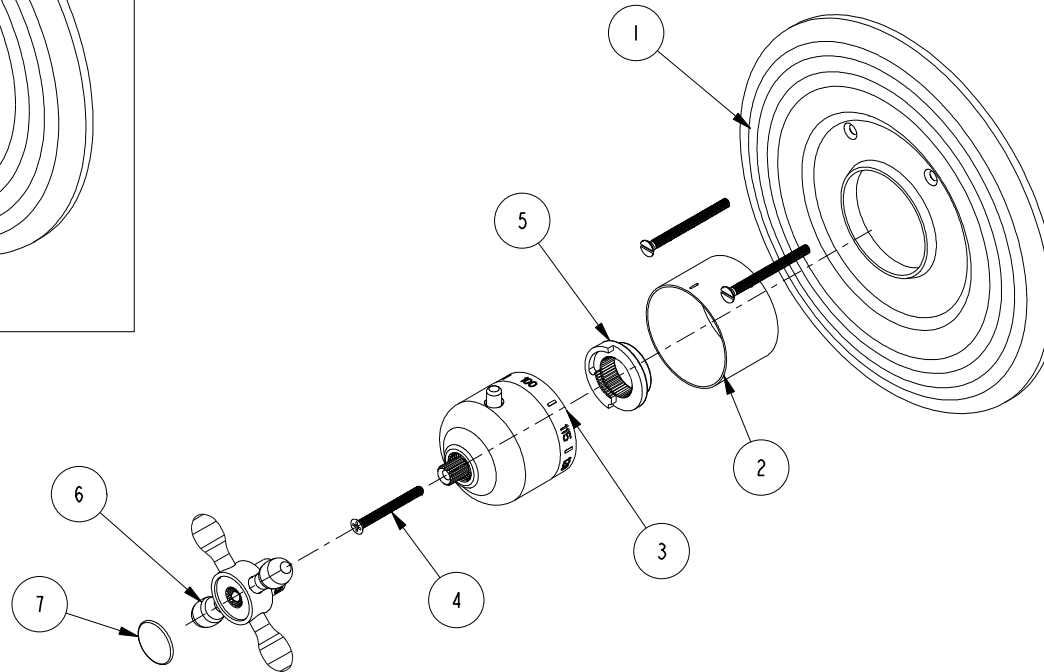
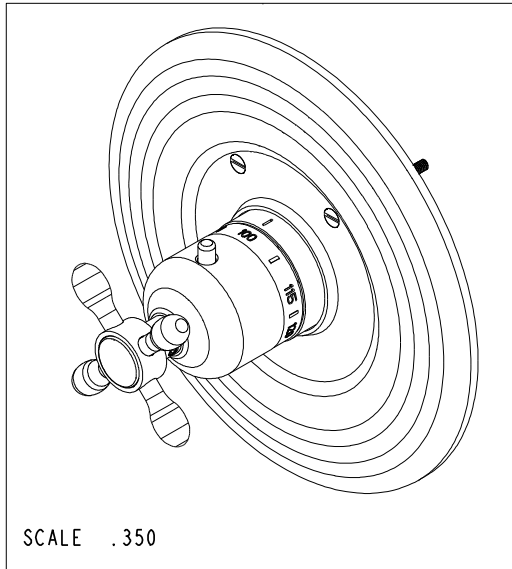


NOTES:

1. TO INSPECT ASSEMBLY, FOLLOW FIRST ARTICLE AND IN PROCESS INSPECTION SHEET.

BILL OF MATERIAL (CURRENT LEVEL)

ITEM	PT/ASSY	DESCRIPTION	TYPE	QTY.
1	2-337	THERMO ROUND PLATE ASSEMBLY	ASSEMBLY	1
2	11029	SLEEVE - THERMO	PART	1
3	2-336	THERMO BONNET ASM - TRAD	ASSEMBLY	1
4	92113	SCRW, M4 X .7 X 40 PHL FLT HD SS	PART	1
5	91308	TEMP LIMIT STOP - THERMO	PART	1
6	2-443	CROSS HANDLE ASM	ASSEMBLY	1
7	1-110	BUTTON W/ADHESIVE	ASSEMBLY	1



ZONE	REV	DESCRIPTION	DATE	APPROVED
-	A	EN-3961-2	06/19/20	J.M.
-	-	EO-0299	03/04/04	-

COPYRIGHT 2005 BRASSTECH, INC. THESE DRAWINGS AND THE DESIGNS DEPICTED HEREIN ARE THE PROPRIETARY PROPERTY OF BRASSTECH. ANY USE OR REPRODUCTION IS SUBJECT TO THE EXPRESS APPROVAL OF BRASSTECH. UNAUTHORIZED USE IS STRICTLY PROHIBITED. ALL RIGHTS RESERVED.

TESTING	ASSEMBLY	PLATING	POLISHING	MACHINING	TOOLING FIXTURE #	APPLICATION
-	-	-	-	-	-	REMOVE ALL BURRS AND SHARP EDGES

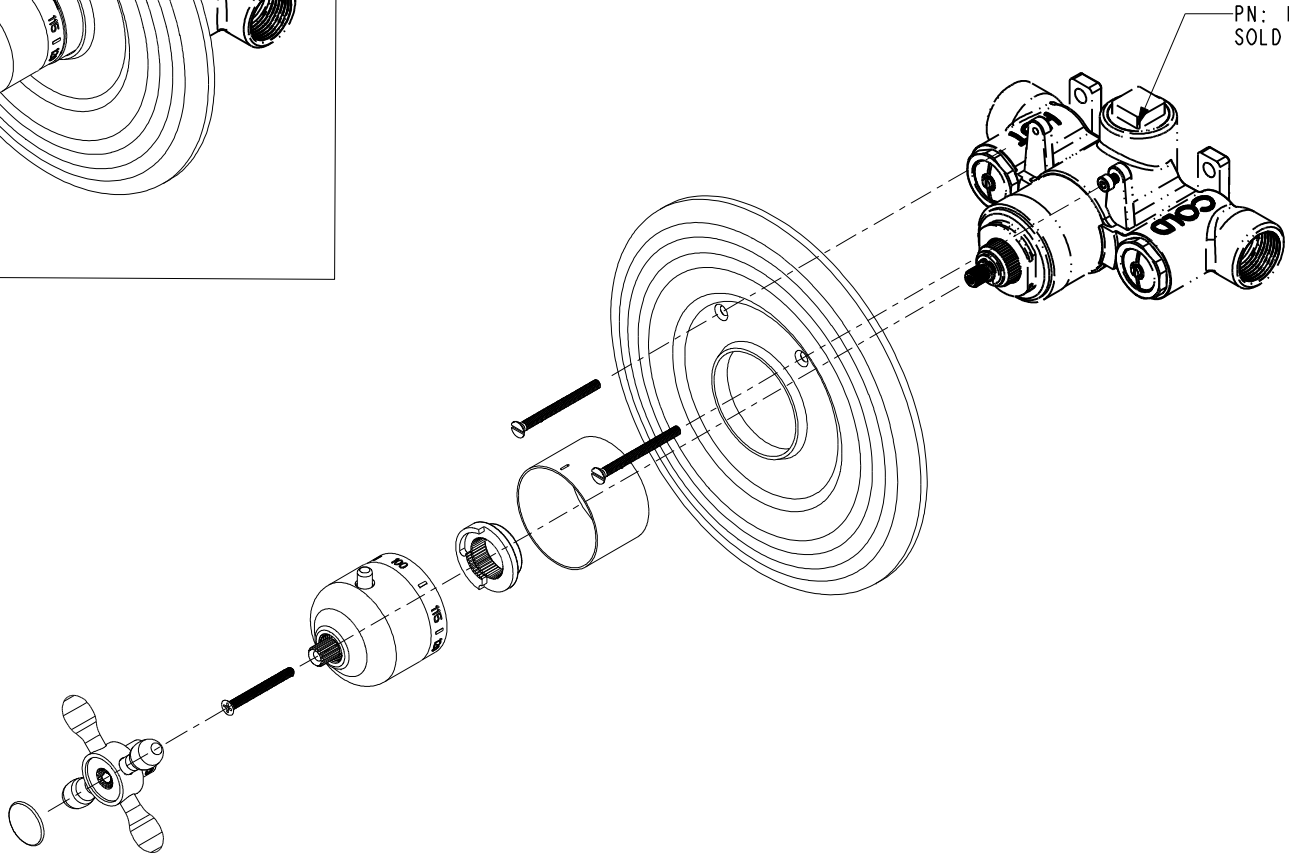
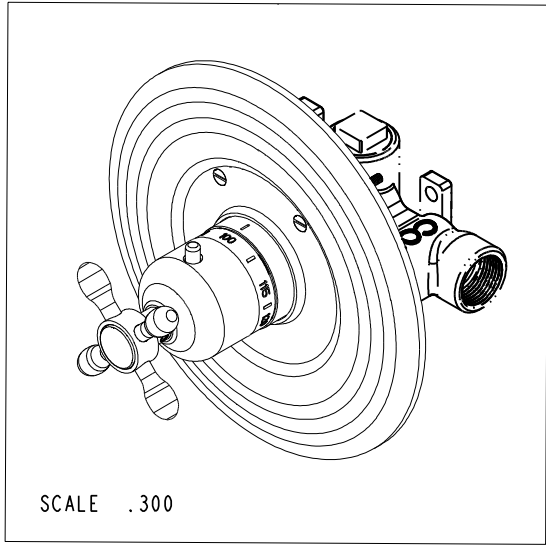
UNITS ARE: INCHES [MM]	
FRACTIONS	DECIMALS
±1/16"	±.001 [2.5]
	±.005 [1.5]
ANGLES ±1°	
(X.XXX) DENOTES CRITICAL DIMS. ALL THREADS ARE CRITICAL	
DRAWN	03/04/04
CHECKED	03/04/04
APPROVED	03/04/04

BRASSTECH 2001 CARNEGIE AVE. SANTA ANA, CA 92705 (949) 417-5207
INCORPORATED

ROUND TRIM THERMO

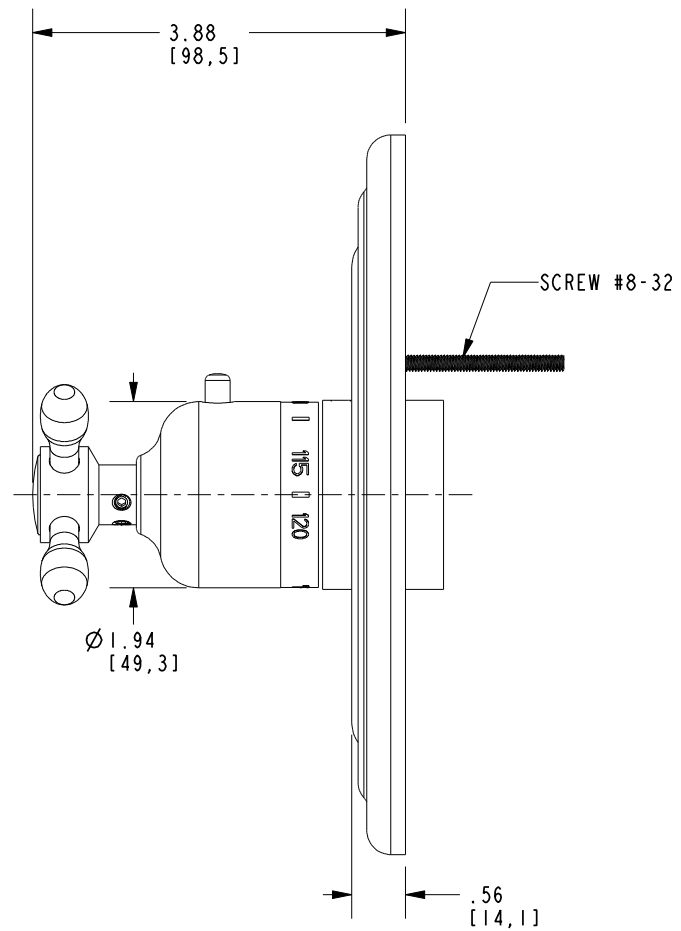
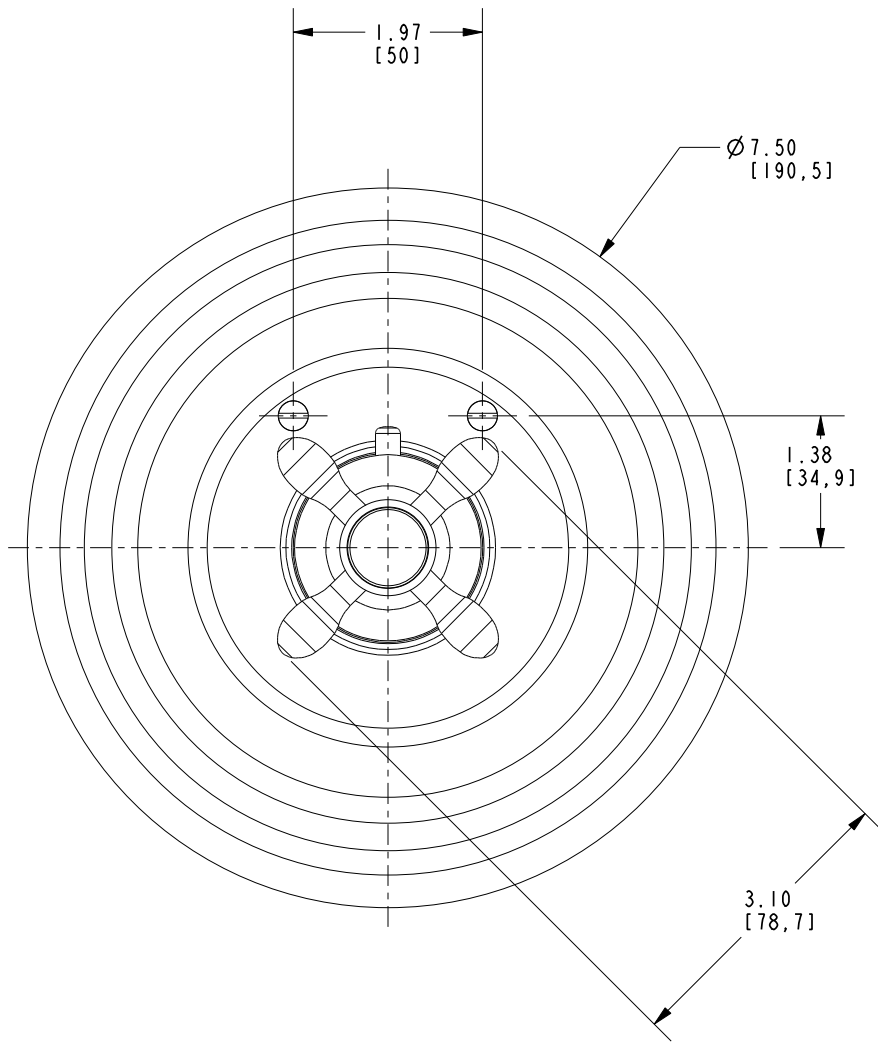
DWG NO. **3-1644TR** REV **A**

SCALE .300 REF. - SHEET 1 OF 3



BRASSTECH 2001 CARNEGIE AVE.
INCORPORATED SANTA ANA, CA 92705
(949) 417-5207

DWG NO.	REV
3-1644TR	A
SCALE .300	REF. -
SHEET 2 OF 3	



BRASSTECH		2001 CARNEGIE AVE. SANTA ANA, CA 92705 (949) 417-5207	
INCORPORATED			
DWG NO.	3-1644TR	REV	A
SCALE	.500	REF.	-
		SHEET	3 OF 3